

FIELD REVIEW REPORT

Date 06/14/05 Feature Crossed SCBL Load Rating HS20 MP 19.41
 Year Built 1990 Width 32'6 Length 69' No. of Spans 3 Cols/Bent 2
 CT Br. No. 36C0106 Dist. 04 Co. SCr Route Local Suff. Rate 87.2

Attendees

Anthony P. Notaro
 David Chan
 Jay Ybarra (Flagman)

Firm/District

Biggs Cardosa Associates, Inc.
 Biggs Cardosa Associates, Inc.
 Union Pacific Railroad

Structure Components

Description

Superstructure	Superstruct type: Cast-in-place concrete slab No. tracks: 1 under span 2 Ballast depth: N/A Structure depth: 8" measured at edge of deck Max. span: Unknown Min. span: Unknown Skew: Varies Drainage: Flows off low end of bridge Condition: Fair
Abutment 1 & 4	Type: Concrete diaphragm abutments with cast-in-place wingwalls Foundation: Unknown Bearings: None Clear Height: 9'-6" Condition: Fair
Pier 2 & 3	Type: Two 13'-0" by 2'-3" concrete columns Foundation: Unknown Bearings: None Clear Height: Varies Condition: Fair
Railings (type, etc.)	Highway: Caltrans Type 27 each side of roadway Pedestrian: Prefabricated steel railing with timber top rail Condition: Good
Walkways (type, etc.)	Type: 8 ft wide sidewalk/ bikeway Condition: Good
Hinges	None

Structure Components**Description**

Restrainers/Soffit Opening Locations	None
Bridge Deck Overlays	AC overlay
Approaches	Slabs: None Railings: MBGR Sidewalks: 8 foot sidewalk on right side
Embankment Erosion	Minor undercutting of wingwall on right side of Abutment 1
Slope Paving	None
Construction access to structural components	Open
Unique Features	Geometry: ~90° curve in plan view Aesthetics: Finish on abutments, columns and wingwalls to appear as vertical wood planks
Visible Damage/ Deterioration	None noted
Existing facilities around structure (buildings, pumping plants, RR, etc.)	Residential housing
Visible Utilities	On: None visible Under: 12" dia. steel pipe extending out of the face of Abutment 4 Adjacent: Overhead electrical lines on each side of structure Street lighting electroliers
Roadway Conditions / Traffic Lanes	No. of Lanes: Two 12 foot traffic lanes Shoulders: None Median: None Drainage: Flows off low end of bridge Signage: 15 MPH curve warning sign Conditions: Fair Overlays: AC overlay Manholes: None
Potential R/W Conflicts	None identified.
Railroad	Santa Cruz Branch Line
Water Crossings	N/A
Critical areas to be surveyed (measure where possible, e.g.	None identified.

Structure Components

Description

column heights)	
-----------------	--

Overall Condition Rating:	7
Overall Channel Rating:	N/A

PRELIMINARY RECOMMENDATIONS

SUPPLEMENTAL INVESTIGATION:

- Conduct detailed structural assessment for continued service loading and seismic vulnerability, including detailed review of previous maintenance reports prepared by UPRR, member by member inspection of existing structure and structural calculations.

CONTINUED FREIGHT SERVICE:

-
-
-

ATTACHMENTS:

- Field Photos
- As-Built Plans
- Maintenance Reports
- Additional Data



Abutment 2



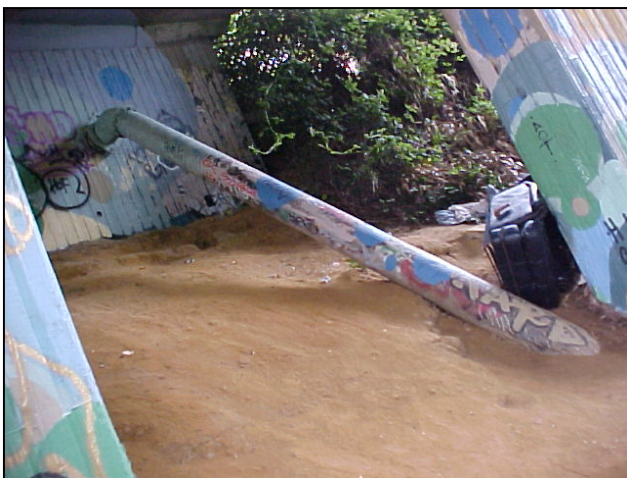
Abutment 1



Global Looking D/S



Abutment 1 Looking D/S



Abutment 1 Shoring Utility Conduit



Top of Bridge