



## SLR Trestle Bridge Connections Project



### I. Project Summary

The Project will provide a trail connection component to three regional trail systems in the City of Santa Cruz. The project includes the replacement of approximately 350 feet of wooden walkway and improvements to the east and west access ramps to the trail located on the Union Pacific railroad trestle adjacent to the Santa Cruz beach area and spanning the San Lorenzo River at its terminus into Monterey Bay (**completed 2005**). A new ramp, approximately 200 feet long, is proposed to be built at the western terminus of the trestle bridge to improve the connection to an extensive trail system and eliminate a railroad track crossing (**To be funded with Riverway or BTA grants, and TDA funds**). The wooden walkway provides pedestrian and bicycle access from the east area to the west area of the City by linking existing pedestrian and bicycle trails. The project proposes installation of safety features and cabling along the walkway and improvements to both the eastern access ramp and the western access ramp for improved access for all users and transitional access for bikes and pedestrians.

The existing trail is approximately four feet wide and runs the length of the trestle bridge from the East Cliff Drive walkway to the Santa Cruz Boardwalk (see Photo 1). The trestle bridge trail is tied to the Beach Street bikeway and is adjacent to the Santa Cruz Boardwalk parking lot (one of the largest parking areas in the City). The trail provides the

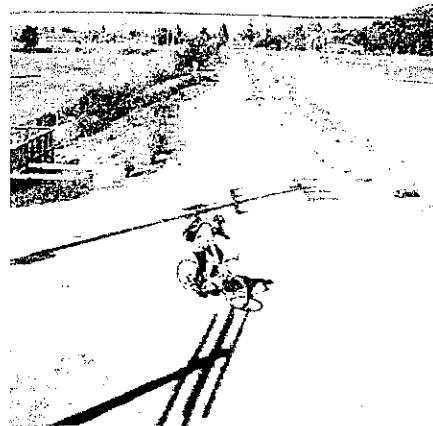
most direct route for users of the bikeway and maintains a coastal access component for pedestrian users.



Trestle Trail

**Photo 1: Trestle Bridge Trail**

The project will link three trail systems that share the trestle bridge as a critical east-west connector. These trails include the California Coastal Trail, the Monterey Bay Sanctuary Scenic Trail and the San Lorenzo Riverway Trail. Statistics compiled by the City of Santa Cruz Public Works Department in August 2003 (high season) showed a daily use of 1,100 bicyclists (or 20% of total vehicles) utilizing the bikeway that is linked to the trestle bridge trail. This high use is expected to continue and increase, as the trail is very well known in the community and with tourists to the area.



**Photo 2: San Lorenzo Riverway Trail**

## II. Project Consistency with State and Local Plans

The Trestle Bridge Trail Improvement Project implements a high priority project in several City of Santa Cruz plans and in the California Coastal Commission's 1999 Public Access Action Plan. The project is located along one local trail corridor (the San Lorenzo Riverway Trail) and two regional trails (the Monterey Bay Sanctuary Scenic Trail and the California Coastal Trail). The trail is also a High Priority Level 1 project in the City of Santa Cruz Bicycle Transportation Plan 2000. The trail is a high priority trail in the Santa Cruz Regional Transportation Plan and connects the future Coastal Rail Trail. The Trestle Bridge Trail's consistency with these various plans and policies are detailed below.

**San Lorenzo Riverway Trail** – The City of Santa Cruz adopted the San Lorenzo Urban River Plan in June 2003. The Urban River Plan provides a 20-year plan for the San Lorenzo River with a focus on habitat enhancement, public access and recreation, and community outreach and education. The plan designates the San Lorenzo Riverway Trail, a 5-mile loop trail encompassing the lower 2.5 miles of the San Lorenzo River and its terminus at the Monterey Bay. The Trestle Bridge Trail Improvement Project is a part of the San Lorenzo Riverway Trail and provides access from the western side of the trail to the eastern side of the trail.

**City of Santa Cruz General Plan and Local Coastal Plan 1999-2005** – The City of Santa Cruz General Plan and Local Coastal Plan includes Policy 4.2 which states: "Develop a system of recreational trails providing access to and connections between the City's various parks, recreation facilities, and natural, coastal areas and urban areas. The Trestle Bridge Improvement Project implements this policy. Policy 2.6 of the General Plan states: "Develop a safe, convenient and effective bikeway system that promotes bicycle travel as a viable transportation mode and connects work, shopping, schools, residential and recreation areas." The Trestle Bridge Trail Improvement Project provides a connection from the eastern side of Santa Cruz to the western side and downtown areas thus providing alternative transportation routes for residents and visitors. The trail connects directly to existing bicycle trails and to the San Lorenzo Riverway Trail.

**Monterey Bay Sanctuary Scenic Trail** – The Monterey Bay Sanctuary Scenic Trail is a regional trail encompassing the coastal areas of San Mateo, Santa Cruz and Monterey counties. The implementation of the Sanctuary Scenic Trail is a project of the Association and Monterey Bay Area Governments. The trail has been endorsed by all jurisdictions in Santa Cruz County and formally dedicated by Congressman Sam Farr. The trail provides educational signage focusing on interpreting the Monterey Bay National Marine Sanctuary which is located offshore of the three counties. The Trestle Bridge Trail Improvement Project provides an east-west connector for the Sanctuary Scenic Trail as well as a trail entry area for visitors starting on the trail from the Santa Cruz Main Beach and Boardwalk area.

**California Coastal Trail** – The California Coastal Trail is a project of the State of California to provide a continuous trail along the coast or near the coast. The California

Coastal Commission's Public Access Action Plan completed in 1999 names the California Coastal Trail as a statewide priority trail project. The designated Coastal Trail route through the City of Santa Cruz includes the Trestle Bridge walkway. The improvement project is therefore consistent with the Coastal Commission Public Access Action Plan and the California Coastal Trail.

**Santa Cruz County Regional Transportation Plan** – The Santa Cruz County Regional Transportation Plan names the Trestle Bridge Trail Improvement project as a high priority project. The trail project is consistent with Goal 1 of the plan: Preserve and maintain the existing transportation system, emphasizing safety and efficiency and policies 2.71 (Construct and mark bikeways on roads and bridges.) and 4.3.1 (Encourage the development of designated recreational trails for pedestrian, bicyclist and equestrian use.)

**Santa Cruz County Coastal Rail Trail** – The Santa Cruz County Coastal Rail Trail is a future bicycle and pedestrian path adjacent to the Santa Cruz Branch Rail Line. The Coastal Rail Trail is in the planning stages. The Trestle Bridge Trail Improvement Project is on the route of the proposed Rail Trail and is one of 37 bridges and trestles located along the proposed 31.8-mile trail. The proposed improvements to the Trestle Trail are consistent with this future rail trail project.

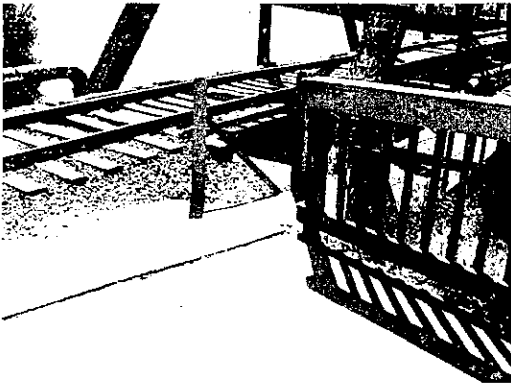
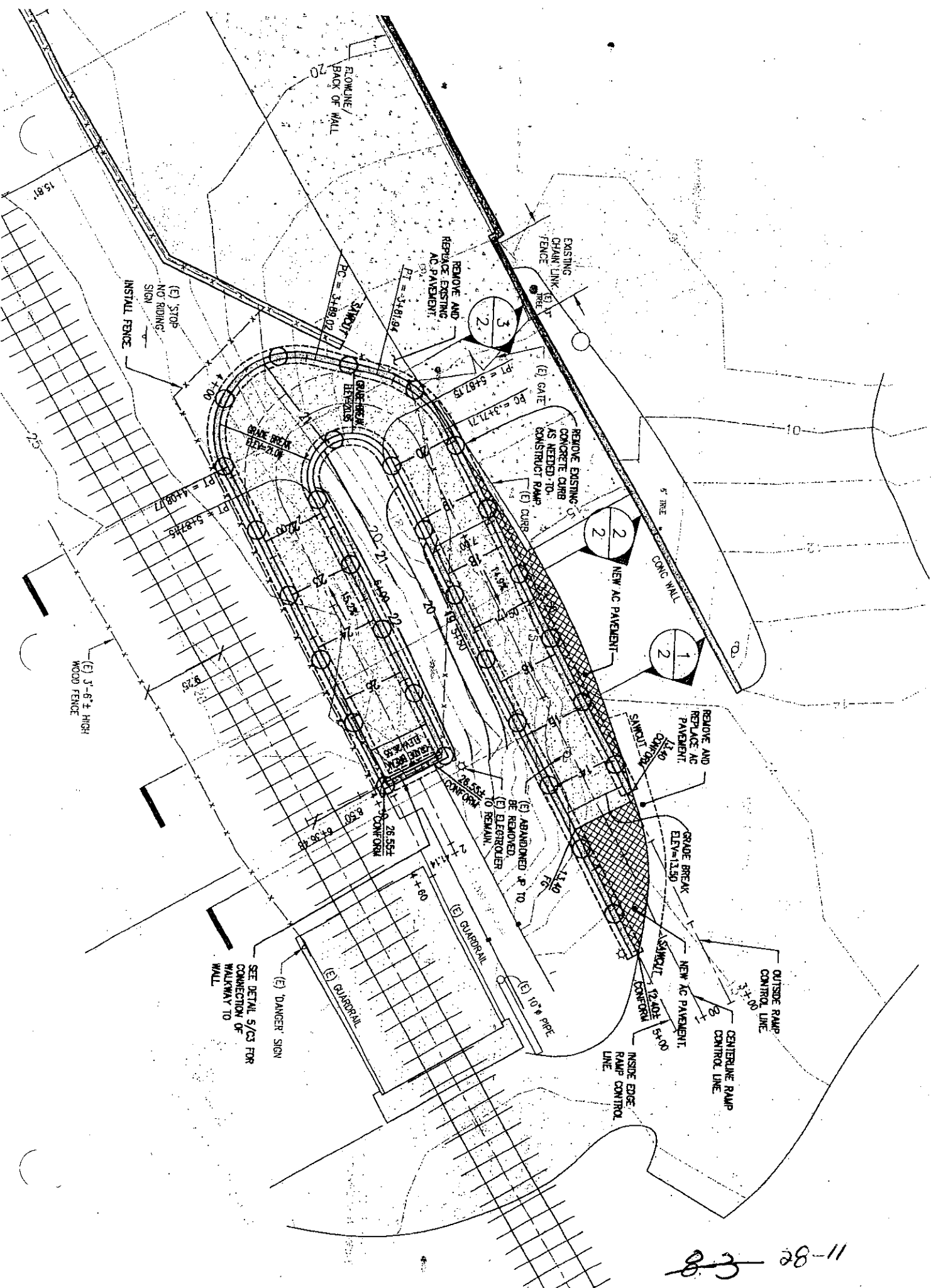


Photo 3: East access conditions



Photo 4: West access conditions



83-28-11