

SAFE ON 17

Highway 17 Safety Corridor

2014 Annual Report

January 1, 2014 to December 31, 2014



*Safety
&
Service*



MTC
SAFE



--This page intentionally left blank--

Introduction

High collision rates on Highway 17 precipitated the formation of the Safe on 17 Task Force in 1999. The task force was convened to identify conditions and behaviors contributing to collisions on the corridor and to recommend and implement solutions. The task force drew from a broad set of disciplines to assemble strategies that would reduce the high collision rate. Strategies included enhanced enforcement, engineering (capital improvements), signing and striping, public education and awareness.

The present goal of the Safe on 17 Program is to maintain the reduced collision rate average achieved during the period funded by an Office of Traffic Safety grant (1999-2002) using a combination of the original recommendations made by the task force. Engineering improvements, enhanced CHP enforcement tactics, public outreach about motorist safety on Highway 17, and a traffic operations system contributed to surpassing this goal in 2014. The task force also continued to collect data to measure consistency with program goals, benchmark progress and monitor where additional improvements may be needed. Typically, safety corridor designations expire after a few years. However, the segment of Highway 17 between Highway 1 in Santa Cruz County and Highway 9 in Santa Clara County has maintained its safety corridor designation for more than 15 years ([Attachment 1](#)).

Funding for extra CHP enforcement is provided by the Santa Cruz County Regional Transportation Commission Service Authority for Freeway Emergencies (RTC SAFE) and the Metropolitan Transportation Commission Service Authority for Freeways and Expressways (MTC SAFE) in the combined amount of \$100,000 per year for each year covered in the funding agreement.

Caltrans continued to make capital improvements to Highway 17 in 2014. The Highway 17 Guardrail Upgrade Project was completed. The Highway 17 Summit Slide Repair and Highway 17 Laurel Curve Northbound Shoulder Widening projects were under construction in 2014. All of these projects are being constructed with the intent to reduce the number of collisions on Highway 17.

2014 Highway 17 Summary of Facts

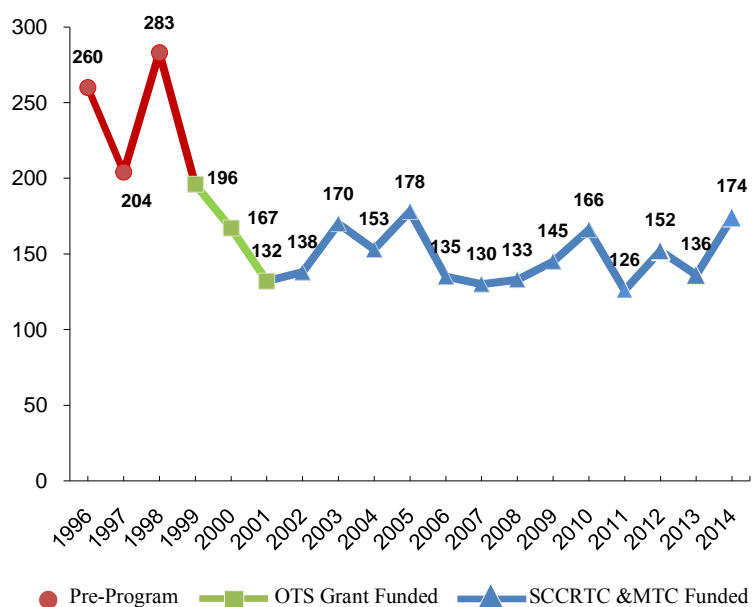
- ▶ There were 3 fatal collisions and 171 injury collisions on the safety corridor in 2014.
- ▶ The total number of collisions for 2014 is 583.
- ▶ Injury collisions were highest in November 2014.
- ▶ CHP wrote an average of 25 citations per day on Highway 17.

Collisions

One hundred and seventy one injury collisions and three fatal collisions were reported in 2014. The fatal and injury collisions for 2014 were 30% lower than the preprogram average of 249. This reduction translates into 75 fewer fatal and injury collisions and 127 fewer property damage only collisions on the Highway 17 Safety Corridor for 2014 compared to the preprogram average. The most recent three-year average for injury and fatal collisions is 154.

The Task Force strategies have reduced the number of fatal and injury collisions by an average of 39% over the last 15 years from the pre-program three year-average of 249. The most recent three-year average of fatal and injury collisions is 154, which surpasses the goal of the Task Force to maintain the reduced three-year collision rate average achieved during the OTS grant period of 165 injury and fatal collisions. The total annual average number of injury and fatal collisions for the SCCRTC and MTC SAFE funded period (2002 on) also remains lower at 149 than the annual average of the OTS grant period of 165. Figure 1 shows the annual injury and fatal collision data between 1996 and 2014. A breakdown of collisions by type is provided in [Attachment 2](#).

Figure 1: Annual Total Fatal & Injury Collisions on Highway 17, 1996-2014



A detailed comparison between 2014 monthly collisions and historical averages (1999-2013) is provided for both Santa Cruz and Santa Clara Counties in [Attachment 3](#). On the Santa Cruz County side of Highway 17, the highest number of total collisions (injury, property damage only and fatal) occurred in February and November 2014. On the Santa Clara County side, the highest number of collisions occurred in October 2014.

A combination of speeding, tailgating and unsafe lane changes (also called primary collision factors) are considered to be the most frequent factors leading to collisions on Highway 17 but distracted driving is also a growing threat to road safety. Since the Safe on 17 program began in the late 1990's a number of developments have increased driver distraction. These include:

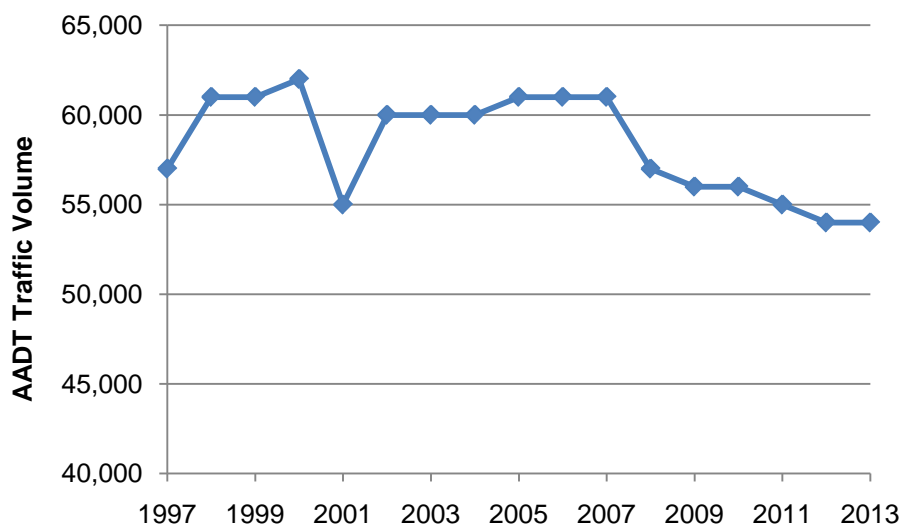
- Significantly increased cellular phone usage
- Proliferation of text messaging over cellular phones
- Availability of smart phones with access to email and many other functions
- Usage of navigation systems through a variety of devices

Due to the proven negative impacts of these additional driver distractions, laws have been passed and campaigns have been waged to curtail their effect on collisions, yet many people drive under the influence of these distractions. These additional factors can cause an upward trend in the number of collisions, and may be the reason for the increased collision rate on Highway 17 for 2014.

External factors may also influence the total number of collisions. Wet weather is considered to increase traffic collisions due to wet pavement and a decreased visibility. Monthly rainfall data is plotted with the injury and fatal collision data for 2014 in [Attachment 4](#). Injury and collision data were highest in the spring and fall months of October through February. The total yearly rainfall in 2014 was 29.5 inches compared to a yearly average of 30.25 inches. The highest rainfall months for 2014 were February and December which accounted for about two-thirds of the yearly rainfall.

Traffic conditions are considered to be a factor in the number of collisions. Traffic conditions can be assessed in a number of ways including the Average Annual Daily Traffic (AADT). On Highway 17, the AADT has decreased by over 6000 vehicles since 2007 and thus may be a factor in the number of collisions on Highway 17 since this time (Figure 2).

Figure 2. Traffic Volumes on Highway 17 at Santa Clara/Santa Cruz County Line



California's basic speed law reminds us that as drivers, we are all responsible to drive in a manner that is reasonable and prudent with regard for weather, visibility, traffic and surface and width of the highway and that does not endanger the safety of people or property (CA Vehicle Code 22350).

Extra CHP Enforcement

Extra CHP enforcement is an essential element of the Safe on 17 Program. The extra CHP enforcement is dispatched along all of the Highway 17 Safety Corridor, which is located between the Highway 1/17 interchange in Santa Cruz County and the Highway 9/17 interchange in Santa Clara County. Increased CHP enforcement on Highway 17 prevents collision causing behavior in two ways. First, high CHP visibility on Highway 17 serves to encourage safer driving and deter traffic violations. Second, increasing the number of citations is a mechanism for encouraging motorists to adhere to the rules of the road. The Santa Cruz and San Jose CHP offer a list of overtime opportunities to their officers, which makes-up the extra enforcement on Highway 17. The number of enforcement hours per month is dependent upon CHP staffing levels, competing overtime opportunities, and training requirements. In 2014, a total of \$132,708 was spent on extra CHP enforcement and 1,494 hours of extra CHP enforcement were worked (Table 1). [Attachment 5](#) summarizes the extra enforcement by month for 2014.

Table 1: Annual Extra CHP Enforcement Hours Worked & Safe on 17 Funds Used

Year	<i>San Jose CHP</i>		<i>Santa Cruz CHP</i>	
	Extra Enforcement Hours Worked	Safe on 17 Funds Used	Extra Enforcement Hours Worked	Safe on 17 Funds Used
2003	490	\$31,197	850	\$47,913
2004	610	\$38,129	709	\$45,728
2005	601	\$39,495	730	\$49,631
2006	680	\$51,590*	636	\$47,858
2007	909	\$76,953*	565	\$49,738
2008	706	\$61,652*	737	\$68,023*
2009	591	\$47,651	399	\$36,709
2010	22	\$1,842	308	\$27,224
2011	828	\$65,970**	705	\$55,047*
2012	576	\$45,072	681	\$54,045***
2013	340	\$30,849	812	\$70,152***
2014	852	\$72,886**	643	\$58,822***

* Between 2006 and 2009, CHP was permitted to carryover funds not spent during the prior years to the current year, thus resulting in more than \$50,000 expended in services in some years. A new contract was initiated in 2009 with CHP and no unspent funds were carried over into the new contract, thus limiting expenditures in 2009 to \$50,000 per year for Santa Cruz and San Jose CHP.

**The RTC provides the funds on a fiscal year and thus the amounts may be higher than \$50,000 when summed on a calendar year as reported here.

***Santa Cruz CHP was permitted to carryover any unspent funds in future years.

Citations

A total of 9,057 citations were issued on Highway 17 during 2014. Of these, 2,344 were given during Safe on 17 extra enforcement hours. Citations issued during overtime in 2014 made up 26% of citations. Total yearly citations since about 2008 have been on average about 9,000 to 10,000. In the earlier years of the program (2003 - 2007), total citations were in the range of 11,000 to 14,500 per year.

Figure 3: 2014 Highway 17 CHP Citations by Regular & Overtime Hours

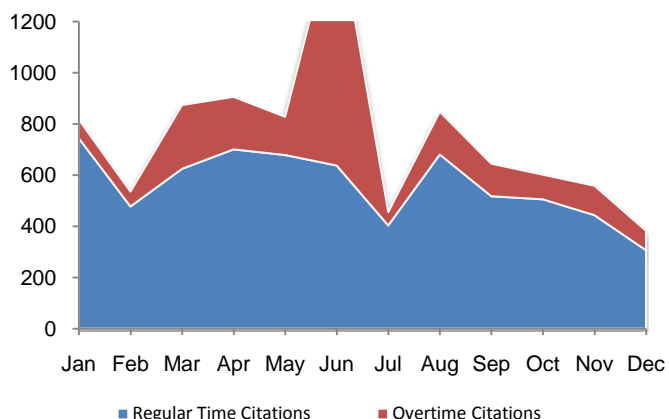
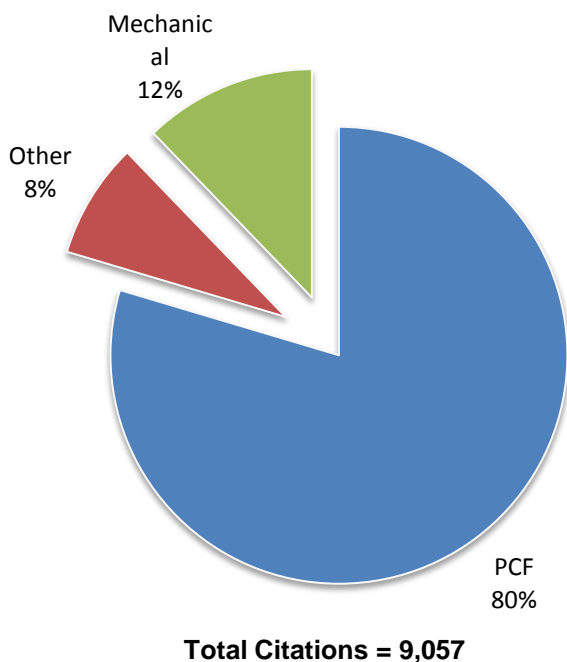


Figure 4: Total Citations by Citation Type (Primary Collision Factor, Mechanical, Other)



The most overtime citations per month for 2014 were given in the beginning of the summer tourist season. Figure 3 illustrates the number of citations given during regular hours and overtime hours. [Attachment 6](#) provides a summary of annual total overtime and regular time citations and [Attachment 7](#) charts the annual citations from San Jose and Santa Cruz compared to historical averages. During extra CHP enforcement hours on Highway 17, officers focus on preventing behavior that is known to be a primary collision factor (PCF) such as speeding, tailgating or making unsafe lane changes. These focused efforts help achieve the Safe on 17 Program goal of limiting the number of injury and fatal collisions. Accordingly, in 2014, 80% of all citations given on Highway 17 were for PCF violations (Figure 4).

CHP Data Reporting

As required, the Santa Cruz area and San Jose area CHP offices have been providing monthly collision and citation data since the Program's initiation ([Attachment 8](#)). The data is important for monitoring program effectiveness.

Safe on 17 Task Force Meetings

The Safe on 17 Task Force is comprised of representatives from the San Jose and Santa Cruz area CHP, Caltrans Districts 4 and 5, MTC SAFE, RTC SAFE, local legislators' offices, local media, trucking industry, local police and fire departments ([Attachment 9](#)). In 2014, members continued to regularly attend the two scheduled meetings (March 12 and September 10) and committed to staying involved and working towards improving safety on Highway 17.

In 2014, the Task Force discussed the outcomes of the CHP's extra enforcement efforts, provided input on current Caltrans' Highway 17 projects and maintenance activities, and provided input on potential Highway 17 improvements. In addition, the Task Force routinely discusses issues related to the handling of incidents on this unique multi-jurisdictional corridor, opportunities for agency coordination, public education related to motorist safety, and Freeway Service Patrol Program activities.

Like in previous years, in 2014 both of the Safe on 17 meetings were combined with the RTC Traffic Operation Systems Oversight Committee Meetings. There is a significant overlap in membership in these committees and subject matter. Traffic operation systems elements such as closed circuit television cameras and changeable message signs can be tools for enhancing safety on the Highway 17 corridor and require coordination between the separate CHP and Caltrans jurisdictions covering the Highway 17 safety corridor.

Public Information

In 2014, RTC SAFE, MTC SAFE, CHP and Caltrans continued to provide information to the public about the extra enforcement and safety on Highway 17. In 2014, CHP included information about safe driving on Highway 17 at CHP sponsored events, including new driver education programs held at high schools and motorcycle and community events. CHP also reminded the public about safe driving on Highway 17 during regular interviews and when reporting to the media about Highway 17.

In addition, in 2014, press releases were published by CHP which highlight extra enforcement efforts and educate motorists about safe driving ([Attachment 10](#)). The public was also reminded to drive safely using the changeable message signs located on Highway 17. Similar to previous years, the "Click it or Ticket", "Slippery Roadway Reduce Speed", "Share the Road Look Twice for Motorcyclists" and "Hands Free It's the Law" were frequently posted messages.

Highway Safety Improvements

Guardrail Improvement Projects

The Highway 17 guardrail project to upgrade guardrails at twenty-eight different locations between Scotts Valley and the Summit in Santa Cruz County (PM 6.1-12.5) was completed in 2014. Guardrail improvements included upgrading end treatments to current standards, replacing/reconstructing metal beam guardrail, and replacing some metal beam guardrail with concrete rail or K-rail. Guardrails can prevent vehicles from veering off the roadway or into oncoming traffic, or crashing against solid objects.

Hwy 17 Summit Slide Repair

A project to construct a retaining wall with concrete slab and barrier along Hwy 17 near Scotts Valley (0.2 miles north of Glenwood Dr.) began construction in spring 2013. This project is anticipated to be completed by spring 2015.

Highway 17 Laurel Curve Northbound Shoulder Widening

The Highway 17 project at Laurel Curve began in August of 2014. This project will widen the shoulder in the northbound direction. Wider shoulders allow motorists to have more room to correct themselves if they veer off the road. Wider shoulders can also provide a place for vehicles to pull off the road in an emergency and increase visibility around a curve. This project is scheduled to be completed in 2015.

Highway 17 Access Management Plan

Caltrans District 5 is working with Santa Cruz County, California Highway Patrol and the Santa Cruz County Regional Transportation Commission to develop a plan that will identify issues and imbalances in access and mobility on Highway 17 between Granite Creek Rd in Scotts Valley and Summit Road at the Santa Cruz/Santa Clara County line. Public Outreach is a key component of the plan. The study will identify local, regional, and interregional needs through stakeholder engagement. This long term plan is needed to compete for funding to address access issues along this corridor.

Conclusion

There were three fatalities and 171 injuries on the Hwy 17 corridor during 2014. With those collisions, the most recent three-year annual average is 154, which surpasses the goal of maintaining the reduced injury and fatal collisions (165) experienced during the initial Office of Traffic Safety grant period (1999-2002). The overall annual average number of injury and fatal collisions for the SCCRTC and MTC SAFE funded period (2002 – 2014) remains lower at 149 than the annual

average of the OTS grant period of 165. A number of factors may have contributed towards the increase in the number of collisions in 2014 including use of mobile devices while driving.

During 2014, Caltrans continued to implement safety improvements aimed at reducing wet weather and run-off-road collisions through guardrail upgrades and shoulder widening projects. Through public education, primarily CHP Start Smart events, and Caltrans signs (both static and changeable message signs), motorists are informed to “Take it Slow” on Highway 17. Extra CHP enforcement also provides a powerful disincentive to motorists to stop behaviors that cause collisions such as speeding, tailgating and unsafe lane changes. Despite the reduction in the number of collisions since the designation of Highway 17 as a safety corridor, the total number of collisions still warrants continued attention to improving safety on Highway 17. The Safe on 17 Task Force members continue to work collaboratively to identify and address factors that will have the greatest influence on reducing the number of collisions.

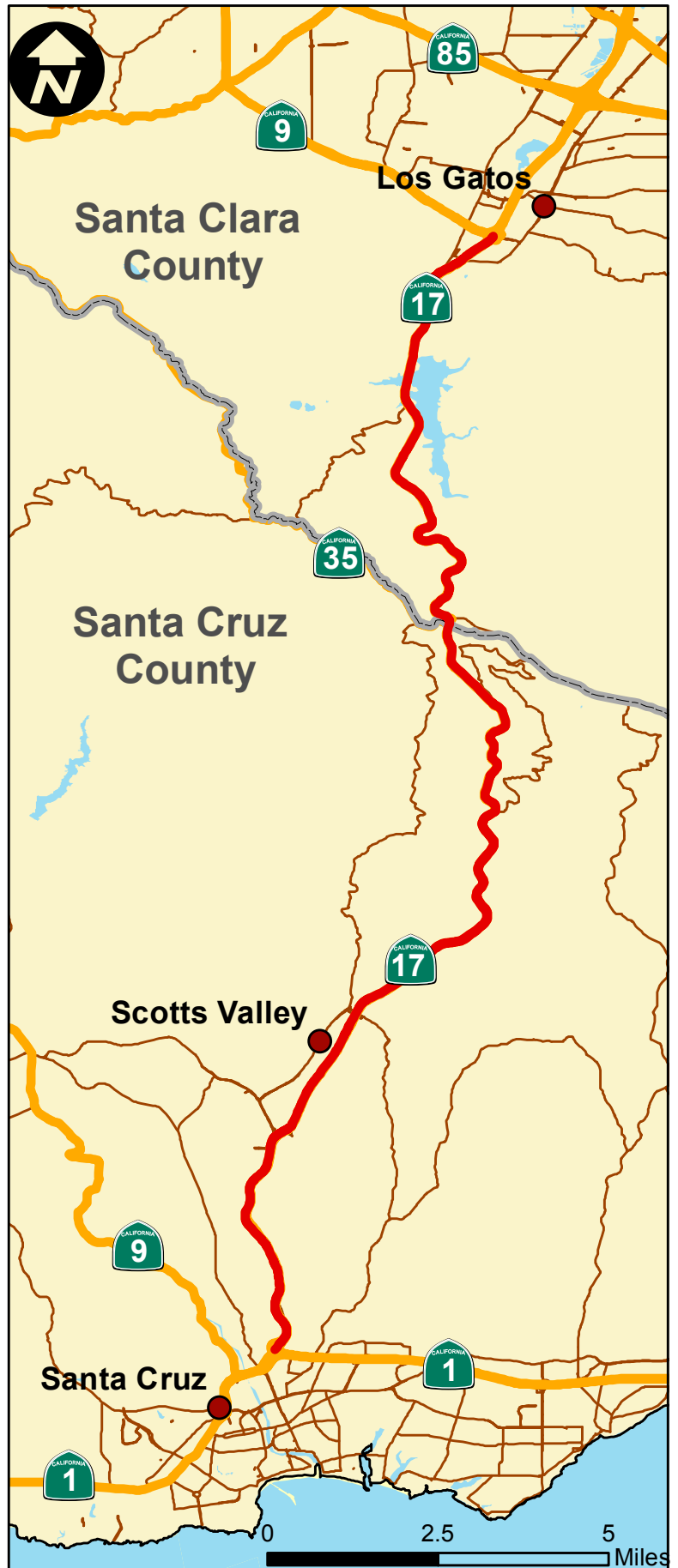
Attachments

Attachment 1: Highway 17 Safety Corridor Map
Attachment 2: Summary of Annual Highway 17 Collision Data
Attachment 3: 2014 Highway 17 Monthly Collision Data
Attachment 4: 2014 Monthly Collision and Rainfall Trends
Attachment 5: Summary of Extra CHP Enforcement Hours
Attachment 6: Summary of Annual Highway 17 Citation Data
Attachment 7: 2014 Highway 17 Monthly Citation Data
Attachment 8: CHP Collision and Citation Data Tables for Highway 17
Attachment 9: Safe on 17 Task Force Members
Attachment 10: CHP Press Releases Regarding Highway Safety

Sources:

CA Vehicle Code 22350, Basic Speed Law, Retrieved from <https://www.dmv.ca.gov/portal/dmv/detail/pubs/vctop/vc/d11/c7/a1/22350> on May 11, 2015.
California Highway Patrol. 2014. *SWITRS*. Provided by San Jose and Santa Cruz CHP.
Caltrans. 2014. *Traffic Counts*. Retrieved from <http://traffic-counts.dot.ca.gov/> on May 11, 2015.
Western Region Climate Center Santa Cruz Rainfall Record, Monthly Total Precipitation. Retrieved from <http://www.wrcc.dri.edu/cgi-bin/cliMAIN.pl?cascru+nca> on May 11, 2015.

Highway 17 Safety Corridor



Attachment 2

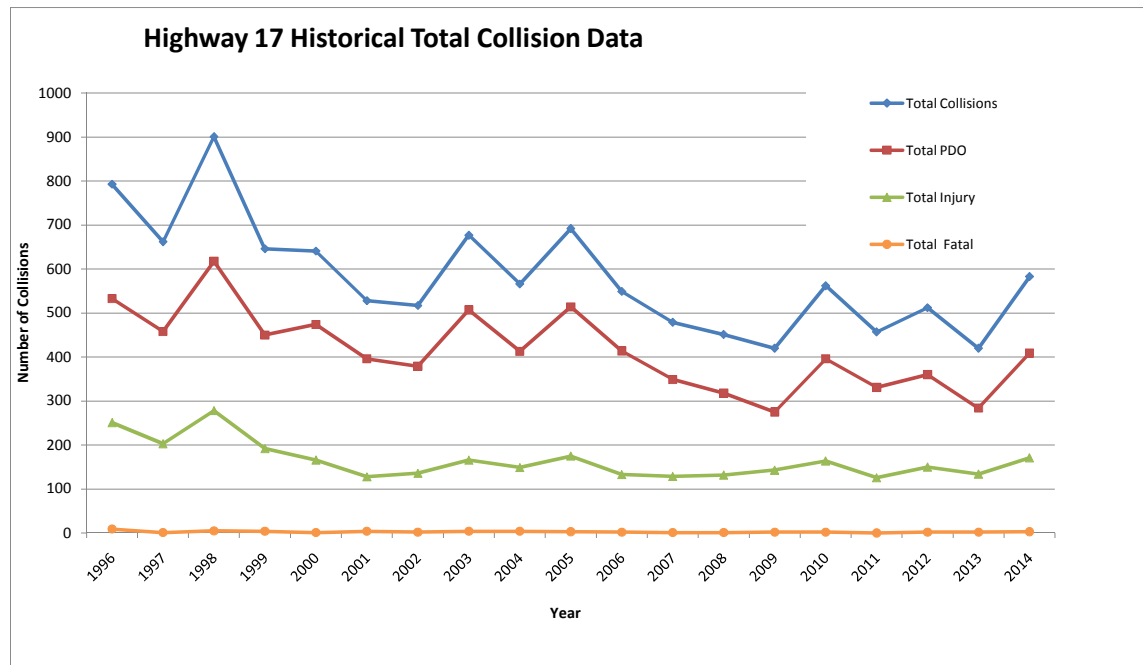
Highway 17 Annual Collision Data

HIGHWAY 17 COLLISION DATA 1996-2014

Year	1996		1997		1998		1999		2000		2001		2002		2003		2004		2005		2006		2007		2008		2009		2010		2011		2012		2013		2014	
San Jose/Santa Cruz	SJ	SC	SJ	SC	SJ	SC	SJ	SC	SJ	SC	SJ	SC	SJ	SC	SJ	SC	SJ	SC	SJ	SC	SJ	SC	SJ	SC	SJ	SC	SJ	SC	SJ	SC	SJ	SC	SJ	SC	SJ	SC	SJ	SC
PDO*	257	276	196	262	306	312	234	216	240	234	175	221	145	234	165	342	148	265	155	359	135	279	119	230	121	197	123	152	144	252	149	182	135	225	133	151	178	231
Injury	123	128	88	115	129	149	101	91	74	92	48	80	45	91	53	113	67	82	52	123	49	84	44	85	58	74	36	107	61	103	42	84	42	108	65	69	62	109
Fatal	5	4	0	1	0	5	0	4	1	0	2	2	0	2	0	4	3	1	0	3	1	1	0	1	1	0	2	1	1	0	0	1	1	1	1	2	1	
Total	385	408	284	378	435	466	335	311	315	326	225	303	190	327	218	459	218	348	207	485	185	364	163	316	180	271	159	261	206	356	191	266	178	334	199	221	242	341
Total Collisions	793		662		901		646		641		528		517		677		566		692		549		479		451		420		562		457		512		420		583	
Hwy 17 Injury and Fatal Collisions	260		204		283		196		167		132		138		170		153		178		135		130		133		145		166		126		152		136		174	

*PDO=Property Damage Only

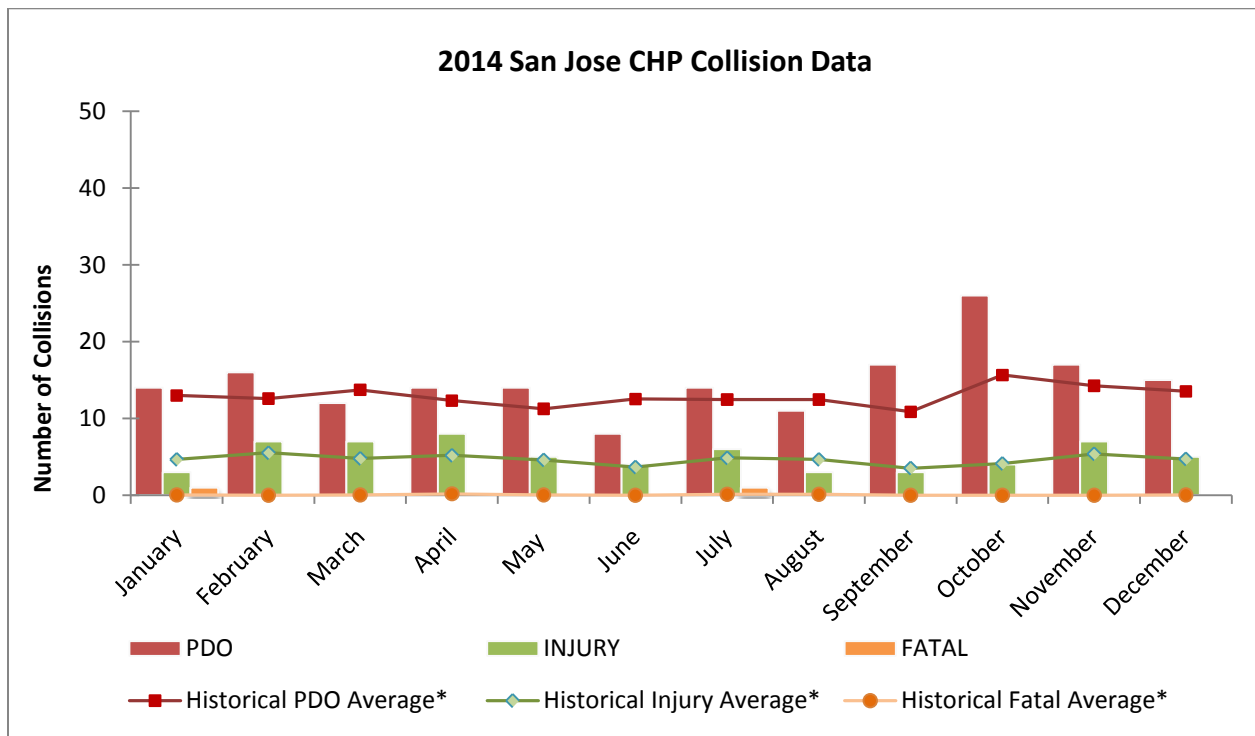
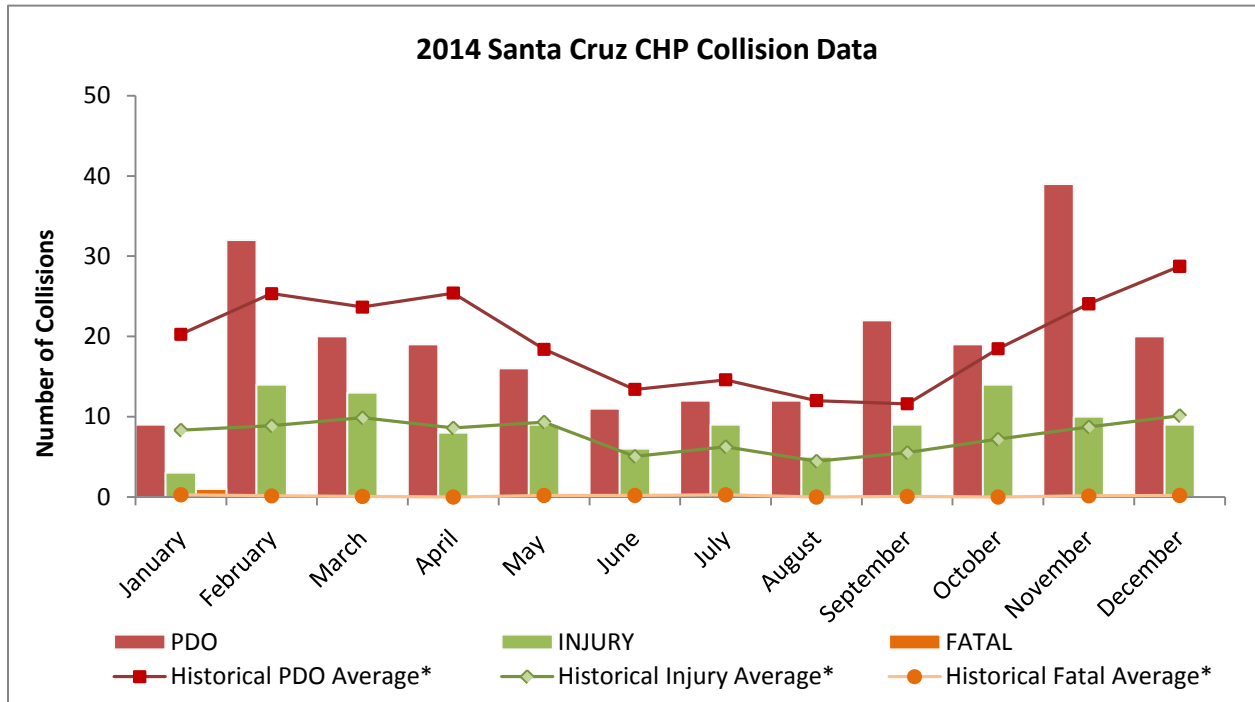
NOTE: Annual Average Injury and Fatal Collision Prior to SAFE on 17 Program = 249



C:\Users\gdykaar\Desktop\SLO docs\Safeon17\2013\Report\Attachment2-stats.xls\Collision Data

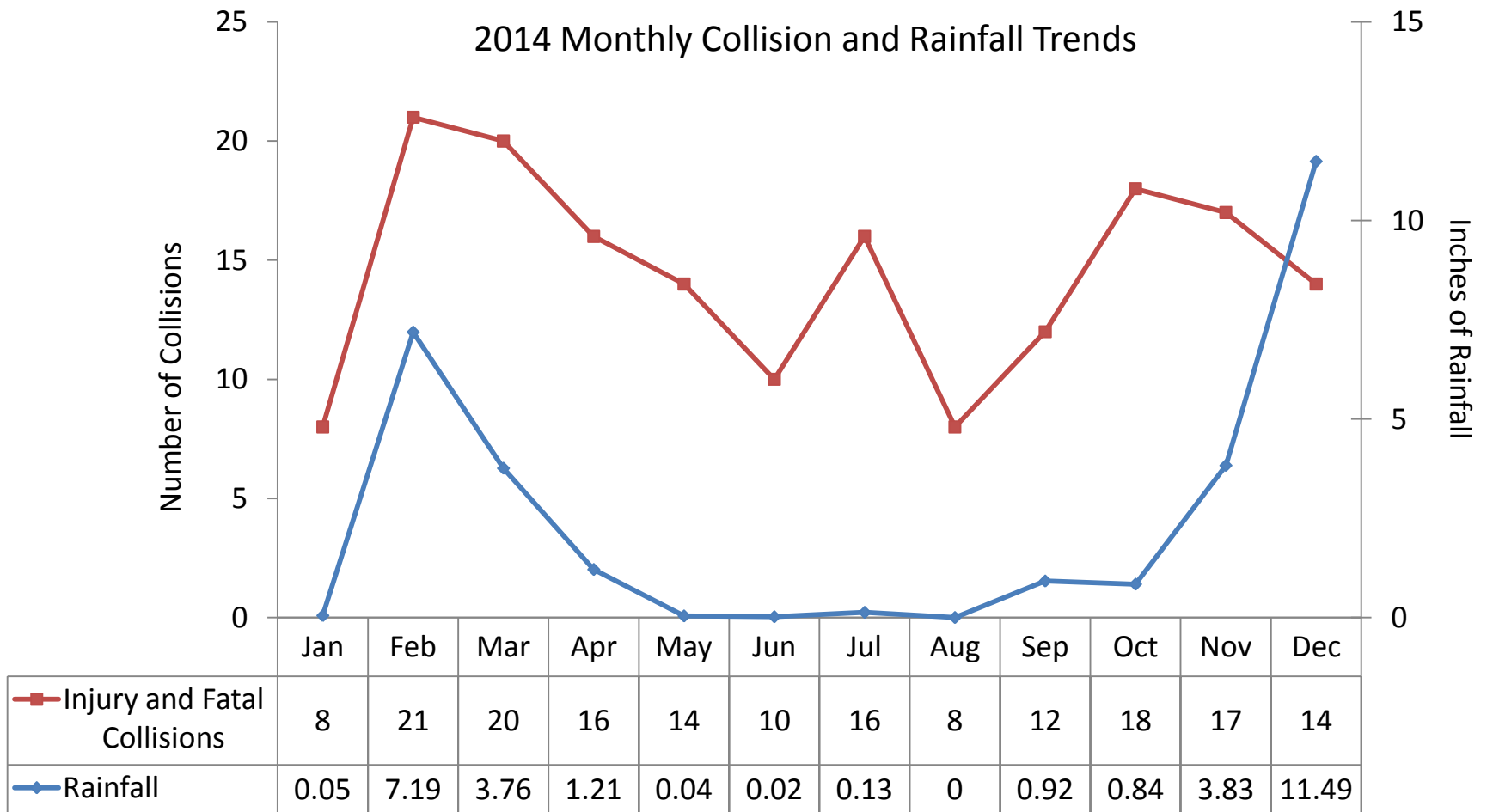
Attachment 3

2014 HIGHWAY 17 MONTHLY COLLISION DATA



*Historical monthly averages derived from 1999, when Safe on 17 was implemented, thru 2013.

Attachment 4

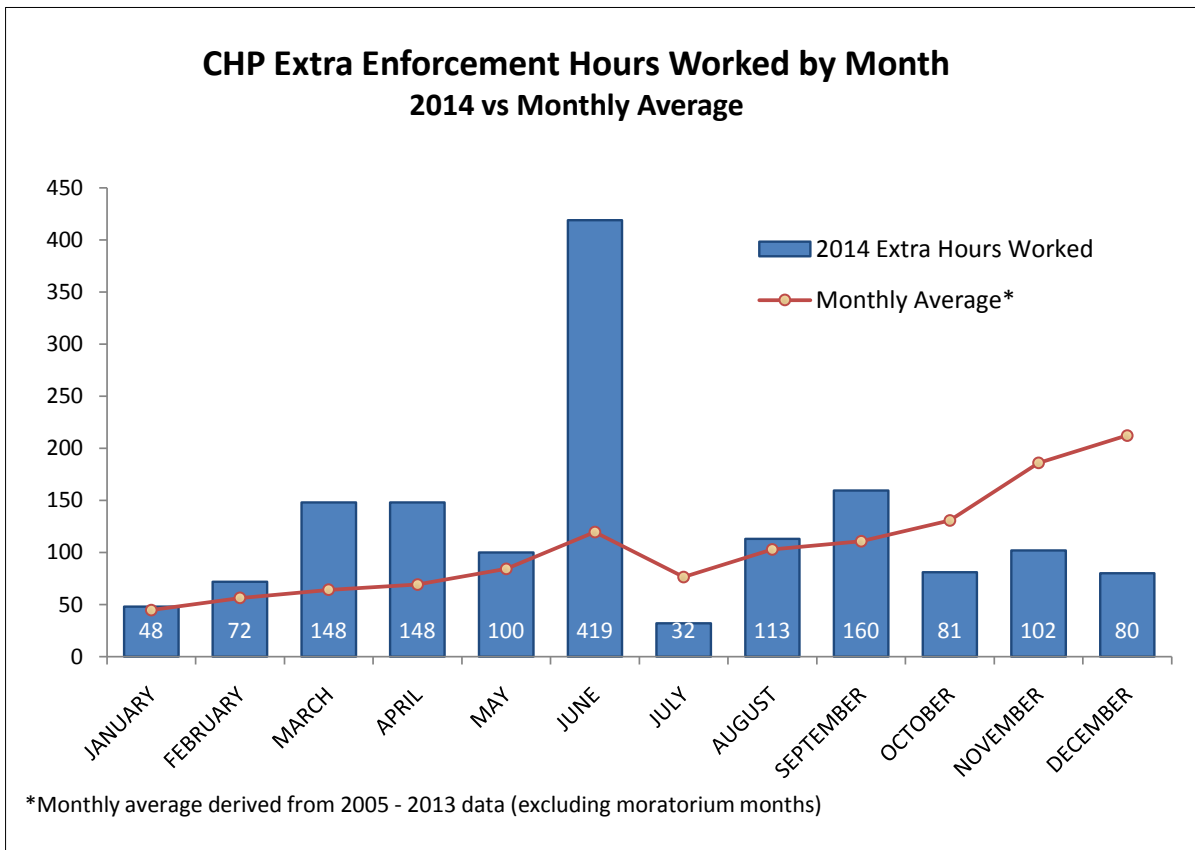


Attachment 5

TOTAL CALIFORNIA HIGHWAY PATROL EXTRA ENFORCEMENT HOURS WORKED

	2005	2006	2007	2008	2009	2010	2011	2012	2013	2014
JANUARY	30	43	6	84	30.5	32	0	84	49	48
FEBRUARY	28	47	98	48	0	24	0	114.5	92	72
MARCH	48	34	114.5	82.5	0	28	170	102	105	148
APRIL	82	55	42	20	36	28	320	106.5	185.5	148
MAY	82	24	158.5	3	66	42.5	266.5	128	172	100
JUNE	101	207	167	50	28	66	112	198	139.5	419
JULY	124	96.75	108	90	52.25	32.5	109	0	86.5	32
AUGUST	164	59.5	112	141.5	150.5	51	139	6	108.75	113
SEPTEMBER	174.5	68	68.5	41.5	238	25.5	136.5	135	97	159.7
OCTOBER	107.5	415	30	55	89.5	0	89	130	42	81
NOVEMBER	140	187	297.5	206	248	0	100	124	75	102
DECEMBER	249.5	79	272	621	50.5	0	86	129	0	80
TOTAL	1,331	1,315	1,474	1,443	989	330	1,528	1,257	1,152	1,503

Moratorium on extra enforcement by Governor due to state budget crisis.



Attachment 6

SAFE ON 17 ANNUAL HIGHWAY 17 CITATION DATA

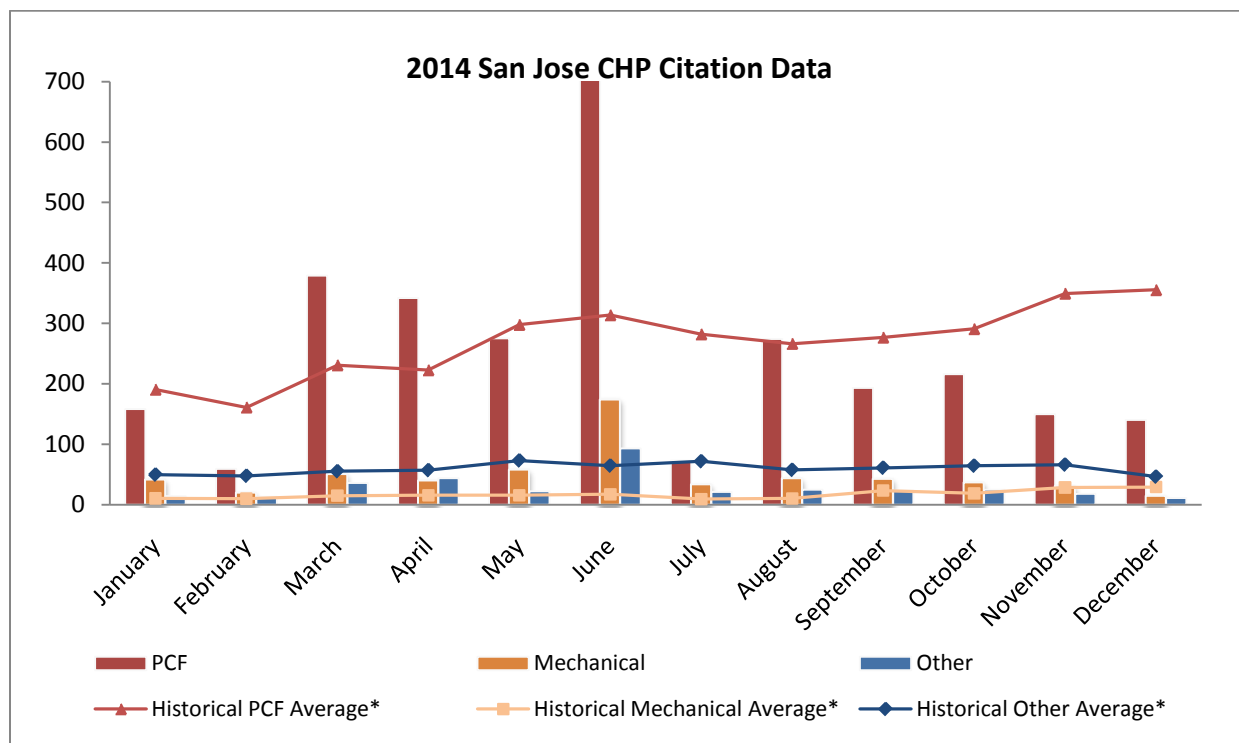
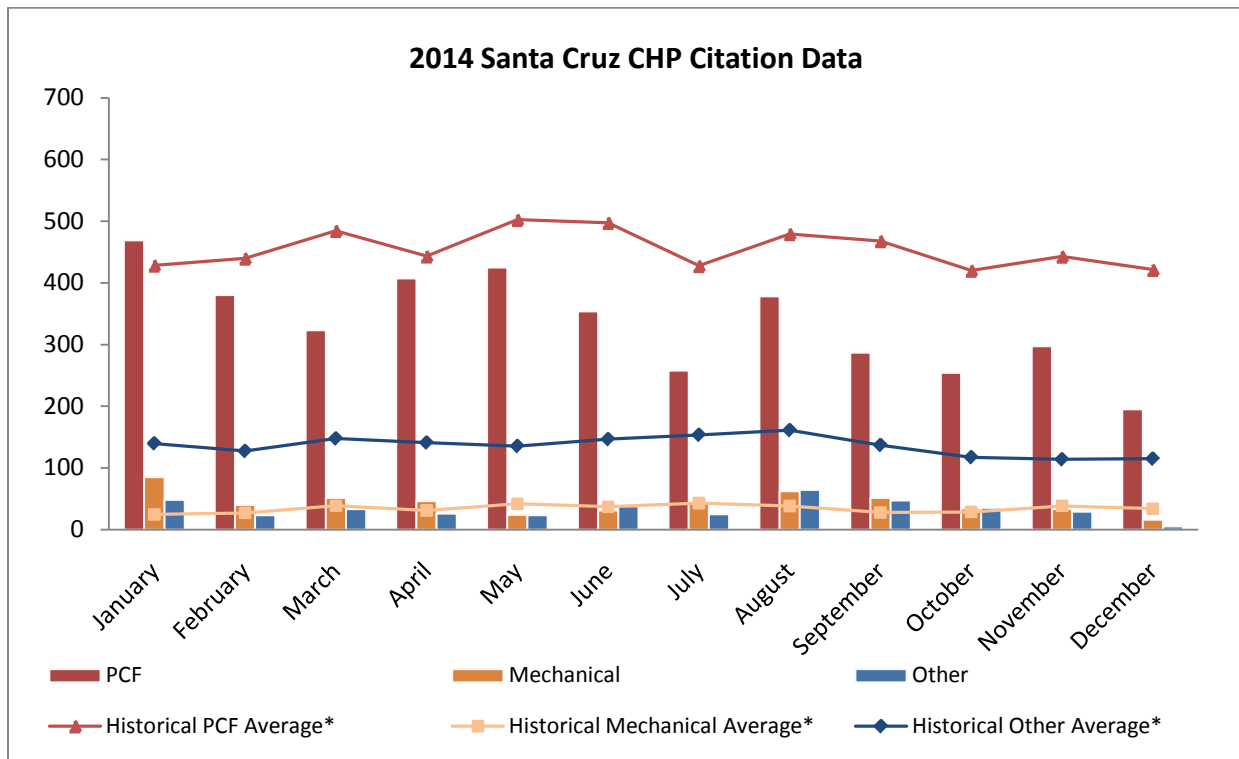
Year	2003		2004		2005		2006		2007		2008		2009		2010		2011		2012		2013		2014	
San Jose/Santa Cruz	SJ	SC	SJ	SC	SJ	SC	SJ	SC	SJ	SC	SJ	SC	SJ	SC	SJ	SC	SJ	SC	SJ	SC	SJ	SC	SJ	SC
Regular Time <i>PCF</i>	2,766	3,666	2,809	5,994	2,995	5,766	2,884	4,627	2,871	3,772	2,169	3,420	2,282	4,298	1,706	4,304	1,182	5,372	2,218	4350	2,416	4289	1,910	3444
Regular Time Other	1,415	2,525	1,186	2,659	942	1,964	727	2,048	307	1,466	406	798	502	917	362	760	192	649	240	835	173	505	223	350
Regular Time Mechanical	56	286	92	180	49	676	85	298	44	405	69	421	82	165	54	394	175	206	437	202	364	455	343	443
Regular Time Total	4,237	6,477	4,087	8,833	3,986	8,406	3,696	6,973	3,222	5,643	2,644	4,639	2,866	5,380	2,122	5,458	1,549	6,227	2,895	5387	2,953	5249	2,476	4237
<i>OT PCF</i>	1,517	345	706	359	769	448	770	448	1,360	378	1,181	507	837	171	50	221	672	452	640	577	387	802	1,273	583
OT Other	149	220	133	376	192	128	35	201	61	103	53	48	21	24	0	40	94	52	136	78	83	40	122	46
OT Mechanical	20	8	11	31	17	61	66	7	122	34	100	58	202	4	0	6	148	14	210	19	133	88	246	74
OT Total	1,686	573	850	766	978	637	871	656	1,543	515	1,334	613	1,060	199	50	267	914	518	986	674	603	930	1,641	703
<i>PCF Regular Time Total</i>	6,432		8,803		8,761		7,511		6,643		5,589		6,580		6,010		6,554		6,568		6,705		5,354	
<i>PCF OT Total</i>	1,862		1,065		1,217		1,218		1,738		1,688		1,008		271		1,124		1,217		1,189		1,856	
<i>PCF Total</i>	8,294		9,868		9,978		8,729		8,381		7,277		7,588		6,281		7,678		7,785		7,894		7,210	
Citation Regular Time Total	10,714		12,920		12,392		10,669		8,865		7,283		8,246		7,580		7,776		8,282		8,202		6,713	
Citation OT Total	2,259		1,616		1,615		1,527		2,058		1,947		1,259		317		1,432		1,660		1,533		2,344	
Citation Total	12,973		14,536		14,007		12,196		10,923		9,230		9,505		7,897		9,208		9,942		9,735		9,057	

PCF = Primary Collision Factor

OT = Overtime

Attachment 7

2014 Highway 17 Monthly Citation Data



*Historical averages are calculated from 2003 (Safe on 17 program implementation) thru 2013

Attachment 8-1
Santa Cruz CHP Collision Summary for SR-17

		1998	1999	2000	2001	2002	2003	2004	2005	2006	2007	2008	2009	2010	2011	2012	2013	2014
JANUARY	PDO	40	28	17	14	18	26	21	32	34	19	22	16	24	11	11	11	9
	INJURY	27	10	8	5	9	12	6	6	10	9	6	9	13	9	10	3	3
	FATAL	1	1	0	0	0	1	0	0	0	0	0	1	1	0	0	0	1
	TOTAL	68	39	25	19	27	39	27	38	44	28	28	26	38	20	21	14	13
FEBRUARY	PDO	36	19	43	14	17	35	41	45	25	28	31	16	20	15	23	8	32
	INJURY	6	9	9	5	4	9	16	17	4	10	9	15	4	7	10	5	14
	FATAL	0	1	0	0	0	0	1	0	0	0	0	0	0	0	0	0	0
	TOTAL	42	29	52	19	21	44	58	62	29	38	40	31	24	22	33	13	46
MARCH	PDO	21	25	26	22	29	23	11	38	35	18	17	13	26	26	30	16	20
	INJURY	11	12	6	5	11	9	7	16	14	2	6	13	7	14	20	6	13
	FATAL	0	0	0	0	0	0	0	0	0	0	0	0	0	0	1	0	0
	TOTAL	32	37	32	27	40	32	18	54	49	20	23	26	33	40	51	22	33
APRIL	PDO	39	27	13	24	22	59	16	45	41	22	20	18	28	18	15	13	19
	INJURY	14	8	9	5	7	16	4	11	11	7	10	12	6	4	9	10	8
	FATAL	1	0	0	0	0	0	0	0	0	0	0	0	0	0	0	0	0
	TOTAL	54	35	22	29	29	75	20	56	52	29	30	30	34	22	24	23	27
MAY	PDO	43	13	25	19	13	24	15	39	16	24	10	12	26	18	11	11	16
	INJURY	25	9	15	13	7	11	5	13	8	9	5	16	8	7	6	8	9
	FATAL	1	1	0	1	0	0	0	0	1	0	0	0	0	0	0	0	0
	TOTAL	69	23	40	33	20	35	20	52	25	33	15	28	34	25	17	19	25
JUNE	PDO	23	12	15	14	11	23	6	24	13	15	10	13	11	9	14	11	11
	INJURY	11	5	3	2	6	4	2	3	6	1	6	6	4	9	10	9	6
	FATAL	1	0	0	1	0	1	0	0	0	0	0	0	0	0	0	1	0
	TOTAL	35	17	18	17	17	28	8	27	19	16	16	19	15	18	24	21	17
JULY	PDO	19	8	15	14	20	18	14	9	16	18	14	10	11	19	24	9	12
	INJURY	5	7	7	8	5	4	5	5	4	4	6	6	9	5	9	10	9
	FATAL	0	1	0	0	0	1	0	1	0	1	0	0	0	0	0	0	0
	TOTAL	24	16	22	22	25	23	19	15	20	23	20	16	20	24	33	19	21
AUGUST	PDO	14	11	22	10	5	17	20	6	16	11	15	8	11	11	9	8	12
	INJURY	10	2	7	7	4	7	7	4	5	4	4	1	5	2	4	4	5
	FATAL	0	0	0	0	0	0	0	0	0	0	0	0	0	0	0	0	0
	TOTAL	24	13	29	17	9	24	27	10	21	15	19	9	16	13	13	12	17
SEPTEMBER	PDO	24	16	20	16	12	12	13	4	13	9	5	8	11	7	14	14	22
	INJURY	13	4	8	4	8	1	6	6	4	3	9	7	7	7	4	5	9
	FATAL	1	0	0	0	1	0	0	0	0	0	0	0	0	0	0	0	0
	TOTAL	38	20	28	20	21	13	19	10	17	12	14	15	18	14	18	19	31
OCTOBER	PDO	17	15	13	20	16	17	44	27	13	21	13	9	12	25	15	17	19
	INJURY	4	11	8	2	5	9	6	12	3	9	3	5	13	8	10	4	14
	FATAL	0	0	0	0	0	0	0	0	0	0	0	0	0	0	0	0	0
	TOTAL	21	26	21	22	21	26	50	39	16	30	16	14	25	33	25	21	33
NOVEMBER	PDO	31	29	16	26	23	28	21	47	36	11	19	13	27	16	29	20	39
	INJURY	10	10	8	13	10	9	8	13	12	8	5	7	11	6	8	3	10
	FATAL	0	0	0	0	1	1	0	0	0	0	0	0	0	0	0	0	0
	TOTAL	41	39	24	39	34	38	29	60	48	19	24	20	38	22	37	23	49
DECEMBER	PDO	5	13	9	28	48	60	43	43	21	34	21	16	45	7	30	13	20
	INJURY	13	4	4	11	15	22	10	17	3	19	5	10	16	6	8	2	9
	FATAL	0	0	0	0	0	0	0	2	0	0	0	1	0	0	0	0	0
	TOTAL	18	17	13	39	63	82	53	62	24	53	26	27	61	13	38	15	29
TOTAL PDO:		312	216	234	221	234	342	265	359	279	230	197	152	252	182	225	151	231
TOTAL INJURY:		149	91	92	80	91	113	82	123	84	85	74	107	103	84	108	69	109
TOTAL FATALITIES:		5	4	0	2	2	4	1	3	1	1	0	2	1	0	1	1	1
TOTAL COLLISIONS:		466	311	326	303	327	459	348	485	364	316	271	261	356	266	334	221	341

Santa Cruz Area CHP SR-17 Citation Summary

		Regular Citations								
		2006	2007	2008	2009	2010	2011	2012	2013	2014
JANUARY	PCF	557	275	129	261	287	396	401	368	413
	Other	192	148	106	92	68	84	68	69	43
	Mechanical	18	9	3	21	16	30	21	17	73
	TOTAL	767	432	238	374	371	510	490	454	529
FEBRUARY	PCF	550	359	166	271	303	420	478	309	325
	Other	213	102	52	59	65	70	68	63	22
	Mechanical	9	32	29	7	10	19	19	23	38
	TOTAL	772	493	247	337	378	509	565	395	385
MARCH	PCF	501	451	252	262	322	351	422	354	273
	Other	202	117	66	73	44	42	86	111	29
	Mechanical	75	42	32	19	21	29	11	20	40
	TOTAL	778	610	350	354	387	422	519	485	342
APRIL	PCF	428	285	191	312	324	431	283	365	346
	Other	229	76	56	63	86	49	88	29	22
	Mechanical	64	14	24	11	36	23	15	16	36
	TOTAL	721	375	271	386	446	503	386	410	404
MAY	PCF	345	369	233	454	429	505	455	444	375
	Other	63	154	78	85	46	82	77	27	22
	Mechanical	55	26	47	22	69	14	25	45	22
	TOTAL	463	549	358	561	544	601	557	516	419
JUNE	PCF	470	365	271	483	523	391	291	339	303
	Other	131	152	88	73	42	68	58	29	33
	Mechanical	10	38	39	9	68	3	13	65	24
	TOTAL	611	555	398	565	633	462	362	433	360
JULY	PCF	303	302	266	396	446	378	288	331	220
	Other	199	110	74	82	38	67	69	35	21
	Mechanical	13	44	59	7	82	4	8	74	34
	TOTAL	515	456	399	485	566	449	365	440	275
AUGUST	PCF	244	346	266	470	498	585	317	477	317
	Other	206	167	47	89	84	35	78	32	56
	Mechanical	11	75	27	17	24	18	25	34	55
	TOTAL	461	588	340	576	606	638	420	543	428
SEPTEMBER	PCF	359	402	265	424	389	472	334	338	240
	Other	148	182	24	105	95	37	58	31	43
	Mechanical	12	5	43	18	32	18	19	31	45
	TOTAL	519	589	332	547	516	527	411	400	328
OCTOBER	PCF	328	194	337	322	307	540	457	381	224
	Other	155	93	30	79	47	47	57	24	31
	Mechanical	8	34	43	9	10	14	15	41	32
	TOTAL	491	321	410	410	364	601	529	446	287
NOVEMBER	PCF	274	209	590	270	267	449	327	319	238
	Other	143	65	48	53	80	25	53	31	24
	Mechanical	13	47	75	10	15	18	17	47	28
	TOTAL	430	321	713	333	362	492	397	397	290
DECEMBER	PCF	268	215	454	373	209	454	297	264	170
	Other	167	100	45	64	65	43	75	24	4
	Mechanical	10	39	84	15	11	16	14	42	16
	TOTAL	445	354	583	452	285	513	386	330	190
ANNUAL TOTALS:		6973	5643	4639	5380	5458	6227	5387	5249	4237

		Overtime Citations								
		2006	2007	2008	2009	2010	2011	2012	2013	2014
JANUARY	PCF	45	2	0	0	32	0	49	6	56
	Other	18	3	0	0	5	0	6	0	5
	Mechanical	1	0	0	0	0	0	0	0	12
	TOTAL	64	5	0	0	37	0	55	6	73
FEBRUARY	PCF	30	63	40	0	24	0	43	52	55
	Other	5	17	2	1	5	0	7	2	1
	Mechanical	0	13	1	0	0	0	1	5	2
	TOTAL	35	93	43	1	29	0	51	59	58
MARCH	PCF	67	64	33	0	16	14	46	57	50
	Other	15	9	7	0	3	0	4	4	4
	Mechanical	0	4	5	0	1	0	5	11	11
	TOTAL	82	77	45	0	20	14	55	72	65
APRIL	PCF	47	32	31	39	38	56	40	112	61
	Other	33	8	8	7	3	6	7	1	4
	Mechanical	2	1	7	2	0	0	0	2	10
	TOTAL	82	41	46	48	41	62	47	115	75
MAY	PCF	13	48	35	31	24	64	84	112	50
	Other	7	8	10	3	12	4	9	8	1
	Mechanical	0	3	4	1	2	0	5	16	2
	TOTAL	20	59	49	35	38	68	98	136	53
JUNE	PCF	71	42	38	25	31	36	47	85	51
	Other	33	13	3	2	6	8	5	6	5
	Mechanical	0	2	6	0	2	0	1	14	7
	TOTAL	104	57	47	27	39	44	53	105	63
JULY	PCF	46	43	7	26	27	49	0	64	38
	Other	32	16	1	1	2	8	0	4	4
	Mechanical	2	6	2	0	1	0	0	24	10
	TOTAL	80	65	10	27	30	57	0	92	52
AUGUST	PCF	22	25	18	4	15	51	7	107	61
	Other	13	10	2	0	3	5	4	4	8
	Mechanical	1	5	3	0	0	2		6	7
	TOTAL	36	40	23	4	18	58	11	117	76
SEPTEMBER	PCF	47	31	22	5	14	46	74	83	47
	Other	16	8	2	3	1	5	14	0	4
	Mechanical	0	0	1	0	0	1	5	1	6
	TOTAL	63	39	25	8	15	52	93	84	57
OCTOBER	PCF	20	4	30	19	0	44	87	63	30
	Other	10	0	2	3	0	11	10	4	4
	Mechanical	0	0	3	0	0	2	2	2	2
	TOTAL	30	4	35	22	0	57	99	69	36
NOVEMBER	PCF	6	11	134	11	0	49	63	61	59
	Other	6	4	7	3	0	4	3	7	5
	Mechanical	0	0	15	1	0	5	0	7	5
	TOTAL	12	15	156	15	0	58	66	75	69
DECEMBER	PCF	34	13	119	11	0	43	37	0	25
	Other	13	7	4	1	0	1	9	0	1
	Mechanical	1	0	11	0	0	4	0	0	0
	TOTAL	48	20	134	12	0	48	46	0	26
		656	515	613	199	267	518	674	930	703

Attachment 8-2
San Jose Area CHP Collision Summary for SR-17 (Beat 171)

		1998	1999	2000	2001	2002	2003	2004	2005	2006	2007	2008	2009	2010	2011	2012	2013	2014
JANUARY	PDO	53	25	24	13	9	12	18	11	19	11	8	5	9	17	6	8	14
	INJURY	17	15	8	2	2	5	8	3	2	6	5	4	4	3	3	0	3
	FATAL	0	0	0	0	0	0	1	0	0	0	0	0	0	0	0	0	1
	TOTAL	70	40	32	15	11	17	27	14	21	17	13	9	13	20	9	8	18
FEBRUARY	PDO	31	23	32	7	11	8	11	10	7	14	14	12	6	11	8	15	16
	INJURY	6	14	10	2	5	2	7	5	4	6	6	6	5	2	3	6	7
	FATAL	0	0	0	0	0	0	0	0	0	0	0	0	0	0	0	0	0
	TOTAL	37	37	42	9	16	10	18	15	11	20	20	18	11	13	11	21	23
MARCH	PDO	29	18	20	20	5	17	10	19	13	11	5	14	11	17	12	14	12
	INJURY	18	9	7	5	5	5	9	3	3	3	3	2	5	4	1	8	7
	FATAL	0	0	1	0	0	0	0	0	0	0	0	0	0	0	0	0	0
	TOTAL	47	27	28	25	10	22	19	22	16	14	8	16	16	21	13	22	19
APRIL	PDO	24	15	23	12	16	16	9	11	15	5	8	10	9	10	16	10	14
	INJURY	11	7	3	3	4	7	5	4	7	7	3	5	6	3	5	9	8
	FATAL	0	0	0	0	0	0	0	0	1	0	1	0	0	0	1	0	0
	TOTAL	35	22	26	15	20	23	14	15	23	12	12	15	15	13	22	19	22
MAY	PDO	40	16	27	16	9	5	13	13	10	5	5	16	11	10	11	2	14
	INJURY	14	3	10	5	3	2	6	6	7	0	7	5	4	4	2	5	5
	FATAL	0	0	0	0	0	0	1	0	0	0	0	0	0	0	0	0	0
	TOTAL	54	19	37	21	12	7	20	19	17	5	12	21	15	14	13	7	19
JUNE	PDO	19	16	17	12	17	10	6	9	13	9	3	13	15	16	20	12	8
	INJURY	13	7	4	3	4	3	4	3	2	3	4	2	3	4	4	5	4
	FATAL	0	0	0	0	0	0	0	0	0	0	0	0	0	0	0	0	0
	TOTAL	32	23	21	15	21	13	10	12	15	12	7	15	18	20	24	17	12
JULY	PDO	10	16	18	12	15	13	17	15	10	9	8	7	16	14	5	12	14
	INJURY	10	7	5	4	4	4	6	1	5	3	6	2	7	5	8	6	6
	FATAL	0	0	0	1	0	0	0	0	0	0	0	0	1	0	0	0	1
	TOTAL	20	23	23	17	19	17	23	16	15	12	14	9	24	19	13	18	21
AUGUST	PDO	19	23	14	13	15	12	9	13	9	13	10	9	8	14	10	15	11
	INJURY	4	7	5	7	3	6	4	2	1	2	7	2	8	6	4	6	3
	FATAL	0	0	0	1	0	0	1	0	0	0	0	0	0	0	0	0	0
	TOTAL	23	30	19	21	18	18	14	15	10	15	17	11	16	20	14	21	14
SEPTEMBER	PDO	21	12	20	21	3	11	10	6	5	8	10	7	10	9	13	18	17
	INJURY	6	6	10	4	4	5	4	3	0	1	2	0	4	1	4	5	3
	FATAL	0	0	0	0	0	0	0	0	0	0	0	0	0	0	0	0	0
	TOTAL	27	18	30	25	7	16	14	9	5	9	12	7	14	10	17	23	20
OCTOBER	PDO	12	27	14	18	12	19	17	21	13	14	10	8	30	14	12	6	26
	INJURY	11	4	2	7	2	2	5	8	5	6	3	3	2	5	3	5	4
	FATAL	0	0	0	0	0	0	0	0	0	0	0	0	0	0	0	0	0
	TOTAL	23	31	16	25	14	21	22	29	18	20	13	11	32	19	15	11	30
NOVEMBER	PDO	38	31	16	16	10	22	12	11	11	7	20	11	12	9	12	14	17
	INJURY	12	15	4	1	4	6	3	8	6	3	9	1	6	4	4	7	7
	FATAL	0	0	0	0	0	0	0	0	0	0	0	0	0	0	0	0	0
	TOTAL	50	46	20	17	14	28	15	19	17	10	29	12	18	13	16	21	24
DECEMBER	PDO	10	12	15	15	23	20	16	16	10	13	20	11	7	8	10	7	15
	INJURY	7	7	6	5	5	6	6	6	7	4	3	4	7	1	1	3	5
	FATAL	0	0	0	0	0	0	0	0	0	0	0	0	0	0	0	1	0
	TOTAL	17	19	21	20	28	26	22	22	17	17	23	15	14	9	11	11	20
TOTAL PDO:		306	234	240	175	145	165	148	155	135	119	121	123	144	149	135	133	178
TOTAL INJURY:		129	101	74	48	45	53	67	52	49	44	58	36	61	42	42	65	62
TOTAL FATALITIES:		0	0	1	2	0	0	3	0	1	0	1	0	1	0	1	1	2
TOTAL COLLISIONS:		435	335	315	225	190	218	218	207	185	163	180	159	206	191	178	199	242

San Jose Area CHP SR-17 Citation Summary (Beat 171)

		Regular Citations								
		2006	2007	2008	2009	2010	2011	2012	2013	2014
JANUARY	PCF	258	174	172	102	126	96	150	279	158
	Other	36	45	37	26	20	32	40	25	14
	Mechanical	15	6	8	5	2	3	13	13	42
	TOTAL	309	225	217	133	148	131	203	317	214
FEBRUARY	PCF	258	131	95	78	109	94	211	284	59
	Other	38	31	26	34	23	7	14	7	13
	Mechanical	6	7	6	1	4	2	26	48	20
	TOTAL	302	169	127	113	136	103	251	339	92
MARCH	PCF	197	302	158	115	114	101	154	276	220
	Other	75	20	29	32	6	15	19	13	32
	Mechanical	18	1	12	6	1	10	38	42	30
	TOTAL	290	323	199	153	121	126	211	331	282
APRIL	PCF	216	108	154	121	110	199	114	223	240
	Other	69	15	31	40	28	9	20	11	30
	Mechanical	4	4	1	4	2	42	49	43	26
	TOTAL	289	127	186	165	140	250	183	277	296
MAY	PCF	306	325	176	252	242	154	165	324	201
	Other	72	17	36	88	30	36	32	13	16
	Mechanical	2	2	3	13	6	33	32	35	42
	TOTAL	380	344	215	353	278	223	229	372	259
JUNE	PCF	307	346	90	153	267	91	267	197	233
	Other	62	33	32	29	42	12	40	23	15
	Mechanical	7	1	1	10	6	11	57	58	29
	TOTAL	376	380	123	192	315	114	364	278	277
JULY	PCF	233	223	201	169	174	87	135	155	73
	Other	63	25	24	32	46	18	14	10	21
	Mechanical	3	2	3	2	6	7	16	25	34
	TOTAL	299	250	228	203	226	112	165	190	128
AUGUST	PCF	180	178	249	248	124	76	178	154	200
	Other	45	12	35	36	32	21	9	10	21
	Mechanical	3	1	6	2	8	18	21	18	31
	TOTAL	228	191	290	286	164	115	208	182	252
SEPTEMBER	PCF	252	188	80	300	125	37	194	193	146
	Other	52	19	28	58	42	13	14	11	13
	Mechanical	8	0	2	12	7	21	35	18	30
	TOTAL	312	207	110	370	174	71	243	222	189
OCTOBER	PCF	230	232	105	223	115	101	175	98	167
	Other	98	21	26	45	27	17	17	24	23
	Mechanical	3	3	2	10	7	11	55	18	28
	TOTAL	331	256	133	278	149	129	247	140	218
NOVEMBER	PCF	322	372	63	371	79	56	277	116	116
	Other	81	31	40	69	17	2	16	20	17
	Mechanical	14	1	2	13	1	5	34	26	20
	TOTAL	417	404	105	453	97	63	327	162	153
DECEMBER	PCF	116	292	626	150	121	90	198	117	97
	Other	36	38	62	13	49	10	5	6	8
	Mechanical	2	16	23	4	4	12	61	20	11
	TOTAL	154	346	711	167	174	112	264	143	116
ANNUAL TOTALS:		3687	3222	2644	2866	2122	1549	2895	2953	2476

		Overtime Citations								
		2006	2007	2008	2009	2010	2011	2012	2013	2014
JANUARY	PCF	0	0	129	0	0	0	33	1	0
	Other	0	0	29	0	0	0	7	49	0
	Mechanical	0	0	11	0	0	0	21	19	0
	TOTAL	0	0	169	0	0	0	61	69	0
FEBRUARY	PCF	0	0	0	0	0	0	43	75	0
	Other	0	0	0	0	0	0	16	3	0
	Mechanical	0	0	0	0	0	0	20	17	0
	TOTAL	0	0	0	0	0	0	79	95	0
MARCH	PCF	0	75	80	0	0	85	38	58	159
	Other	0	3	3	0	0	20	7	1	4
	Mechanical	0	5	14	0	0	14	13	13	21
	TOTAL	0	83	97	0	0	119	58	72	184
APRIL	PCF	0	0	0	0	0	185	59	82	102
	Other	0	0	0	0	0	31	7	11	14
	Mechanical	0	0	0	0	0	11	25	30	14
	TOTAL	0	0	0	0	0	227	91	123	130
MAY	PCF	0	185	0	0	0	119	89	93	74
	Other	0	15	0	0	0	1	17	13	6
	Mechanical	0	14	0	0	0	21	14	21	16
	TOTAL	0	214	0	0	0	141	120	127	96
JUNE	PCF	91	192	0	0	50	33	177	78	691
	Other	6	5	0	0	0	0	19	6	78
	Mechanical	5	3	0	0	0	5	47	33	145
	TOTAL	102	200	0	0	50	38	243	117	914
JULY	PCF	0	70	129	153	0	39	0	0	0
	Other	0	3	1	2	0	3	0	0	0
	Mechanical	0	7	1	5	0	12	0	0	0
	TOTAL	0	80	131	160	0	54	0	0	0
AUGUST	PCF	0	116	204	0	0	42	0	0	74
	Other	0	6	1	0	0	4	0	0	4
	Mechanical	0	8	8	0	0	8	0	0	13
	TOTAL	0	130	213	0	0	54	0	0	91
SEPTEMBER	PCF	12	40	0	285	0	68	49	0	47
	Other	0	5	0	8	0	12	4	0	10
	Mechanical	1	15	0	69	0	19	36	0	13
	TOTAL	13	60	0	362	0	99	89	0	70
OCTOBER	PCF	246	0	0	52	0	49	45	0	49
	Other	13	0	0	2	0	2	48	0	2
	Mechanical	30	0	0	30	0	15	2	0	9
	TOTAL	289	0	0	84	0	66	95	0	60
NOVEMBER	PCF	199	352	18	347	0	45	45	0	34
	Other	11	19	0	9	0	11	5	0	1
	Mechanical	19	34	0	98	0	16	13	0	11
	TOTAL	229	405	18	454	0	72	63	0	46
DECEMBER	PCF	222	330	621	0	0	7	62	0	43
	Other	5	5	19	0	0	10	6	0	3
	Mechanical	11	36	66	0	0	27	19	0	4
	TOTAL	238	371	706	0	0	44	87	0	50
		871	1543	1334	1060	50	914	986	603	1641

Attachment 9

2014 Safe on 17 Task Force Members

Name	Organization
Amy Clymo	MBUAPCD
Amy Naranjo*	Santa Cruz County Regional Transportation Commission
Anika Jesi	Metropolitan Transportation Commission
Arthur De La Cerda*	Caltrans, District 4
Avery Browne	California Highway Patrol
Bernard Walik*	Caltrans, District 4
Bertha Roman*	Caltrans, District 5
Brad Sadek*	Santa Cruz California Highway Patrol
Brandy Rider*	Caltrans, District 5
Brenda Brenner	American Medical Response
Bruce McPherson*	District Supervisor, County of Santa Cruz
Captain Les Bishop*	San Jose California Highway Patrol
Captain Paul Vincent	Santa Cruz California Highway Patrol
Chief Dan Grebil	City of Scotts Valley
Chris Schneider	City of Santa Cruz
Christopher Cook*	Caltrans, District 5
Ciro Aguirre	Santa Cruz Metropolitan Transit District
Cliff Barber	American Civil Constructors West Coast
Cliff Inman	Santa Cruz California Highway Patrol
Colin Jones	Caltrans District 5
Colleen McMahon	City of Santa Cruz
D.J. Sarabia*	San Jose California Highway Patrol
Devin Porr	Caltrans, District 5
Doug Hessing	Caltrans, District 5-Project Manager
Earl Sherman*	Caltrans, District 4-Maintenance
Erich Friedrich	Santa Cruz Metropolitan Transit District
Ernesto Ramirez	Caltrans, District 4-Maintenance
Frances Herbert	Office of Senator Beall, 15th District
Gary Richards	Mercury News
George Dondero	Santa Cruz County Regional Transportation Commission
Ginger Dykaar*	Santa Cruz County Regional Transportation Commission
Grant Boles	Santa Cruz California Highway Patrol
Hans Larsen	City of San Jose
Heather Adamson	Association of Monterey Bay Area Governments
Honorable Jim Beall	State of California
Honorable Mark Stone	State of California
Honorable Paul Fong	State of California
Jack Ladd	Ladd's Auto Body & Towing/AAA
Jack McPhillips	City of Santa Cruz
Jack Sohriakoff	County of Santa Cruz
Jacques Van Zeventer*	Caltrans, District 5
Jaime Maldonado	Metropolitan Transportation Commission-SAFE
James Richardson	Caltrans, District 4 - TMC
Janean Reynolds	San Jose California Highway Patrol
Jarret Winter*	Santa Clara County Fire Department
Jeff Trapp	City of Santa Cruz
Jennifer Calate	Caltrans, District 5
Jennifer Wilson*	Caltrans, District 5
Jeremy Dennis	Office of Assemblymember Rich Gordon
John Blencowe*	San Jose California Highway Patrol
John Darling*	San Jose California Highway Patrol

* Attended Safe on 17 Meeting in 2014

Attachment 9

2014 Safe on 17 Task Force Members (cont'd)

Name	Organization
John Hohmann	City of Scotts Valley
John Leopold*	District Supervisor, County of Santa Cruz
John Presleigh	County of Santa Cruz
John Thomas	Caltrans, District 4-Project Manager
John Weiss	City of Scotts Valley
Julie Gonzalez	Caltrans, District 5
Karena Pushnik	Santa Cruz County Regional Transportation Commission
Kelly McClendon*	Caltrans, District 5
Ken Binder*	County of Santa Clara Sheriff's Office
Ken Yeager	County of Santa Clara
Kim Shultz*	Santa Cruz County Regional Transportation Commission
Kory Seely*	San Jose California Highway Patrol
Larry Esquivel	San Jose Police Department
Laurie Smith	County of Santa Clara
Lt Scott Wood*	Santa Cruz California Highway Patrol
Lt. Brian Hawkins*	Santa Cruz California Highway Patrol
Luis Duazo	Caltrans, District 5-Project Management
Luis Mendez*	Santa Cruz County Regional Transportation Commission
Lynda Kiersted	Caltrans, District 4-Maintenance
Manny Solano	City of Watsonville
Mark Ballentine	Caltrans, District 5-Traffic Safety
Mark Bisbee	City of Watsonville
Mark Powers	Caltrans, District 4
Mark Talan	Office of Traffic Safety
Marshall Ballard*	Valley Transit Authority
Masoud Akbarzadeh	Santa Clara County Airports and Roads
Megan Doyle	County of Santa Clara
Mike Dever	County of Santa Cruz
Mitchell Nelson*	Representing Supervisor Ken Yeager, Santa Clara County
Neil Wiley	Mountain Network News
Nick Saleh*	Caltrans, District 4
Nicole Stewart	Monterey California Highway Patrol Dispatch
Patrick Dussell	Caltrans
Patrick Morrow	Caltrans, District 5
Patrick Mulhearn	County of Santa Cruz
Paul DeOcampo	City of Santa Cruz
Paul McClintic	Caltrans, District 5
Paul Vincent	Captain, Santa Cruz California Highway Patrol
Pedro Alcazar*	Caltrans Maintenance Supervisor
Pranav Shah	Caltrans, District 4-Traffic Systems
Ramin Bolourchian*	Caltrans, District 4-Transportation Management Center
Ramona Turner	Santa Cruz Sentinel
Richard Blacksten*	Caltrans, District 5
Robert Rich	Metropolitan Transportation Commission
Roger Wildey	County of Santa Cruz
Russell Ellingworth*	Caltrans, District 5 -Maintenance
Scot Loetscher*	San Jose California Highway Patrol
Scott Hamby	City of Scotts Valley
Scott Morris	Caltrans, District 5
Sean Nozzari	Caltrans, District 4-Traffic Operations
Shawn Enjily	Caltrans, District 4

* Attended Safe on 17 Meeting in 2014

Attachment 9

2014 Safe on 17 Task Force Members (cont'd)

Name	Organization
Shayne Sandeman*	Caltrans
Sherwyn Gilliland	Caltrans, District 5
Siobhan Saunders	Caltrans, District 5 - Construction
Spencer Boyce	California Highway Patrol
Steve Johnson	Santa Clara Transfer Services, Inc.
Steve Palmisano	City of Watsonville
Susan Lowery	County of Santa Clara Public Health
Susana Cruz	Caltrans, District 5-Public Affairs
Tegan Speiser	Santa Cruz County Regional Transportation Commission
Tom Barnett	Caltrans, District 5-Maintenance

* Attended Safe on 17 Meeting in 2014



PRESS RELEASE

An Internationally Accredited Agency



Josh Ehlers, Commander
Office of Community Outreach & Media Relations
601 North 7th Street, Sacramento, CA 95811

Contact: Fran Clader
Director of Communications
(916) 843-3310

FOR IMMEDIATE RELEASE

December 18, 2014

14-55

CHP ASKS FOR A DUI AND FATALITY FREE HOLIDAY SEASON

SACRAMENTO, Calif. – With holiday celebrations upon us, the California Highway Patrol (CHP) is preparing for this heavily-traveled time of year by educating the motoring public about safety on our roadways. As part of its upcoming Maximum Enforcement Period (MEP) the CHP is reminding travelers to buckle up, adhere to the posted speed limit, avoid distractions behind the wheel, and always designate a sober driver.

The CHP's Christmas MEP enforcement effort begins Wednesday, December 24, 2014, at 6 p.m. and continues through Sunday, December 28, 2014, at 11:59 p.m. During this period, all available officers will be out on the roadways for enhanced enforcement efforts and assisting motorists wherever needed.

"Our intent with the enhanced enforcement efforts during the holiday season is simply to save lives," said CHP Commissioner Joe Farrow. "We want everyone to have a happy holiday season this year and ensure nobody is forced to deal with the loss of a loved one."

An anti-DUI effort is aimed at eliminating drunk-driving by educating Californians about the dangers of driving after consuming alcoholic beverages. According to the National Highway Traffic Safety Administration (NHTSA), more than 10,000 people are killed annually in America by drunk drivers. In December 2012 alone, 830 people died as a result of a collision caused by an impaired driver. This year, the CHP hopes to eliminate the added danger of intoxicated drivers on our roadways.

During the 30 hours of last year's Christmas holiday MEP, five people were killed in traffic collisions. Among those killed were two pedestrians, one motorcyclist, and two vehicle occupants who were not wearing seat belts. The CHP made 221 arrests for driving under the influence during the same 30-hour timeframe.

"Have a safe, fun, and enjoyable holiday celebration this year," added Commissioner Farrow. "Just do it responsibly by making the right and responsible decision before you get behind the wheel and always designate a sober driver."

###

"FOLLOW" US ON
TWITTER



"LIKE" US ON
FACEBOOK