



Category: Highways

Measure D

2016 Santa Cruz County Transportation Sales Tax
Fiscal Year 2023/24 Highlights

FY23/24 Measure D Revenue and Expenditure Snapshot

Measure D Allocation	\$6,721,948
Interest earnings & adjustments	\$749,180
Carryover from Prior Years	\$22,274,790
Expenditures	\$9,000,897
Carryover Balance	\$20,745,021

Highlights of Measure D Investments FY23/24*

**See the Expenditure Report for full list of how Measure D was spent this year*

Highway 1: Auxiliary Lanes and Bus on Shoulder from 41st to Soquel & Chanticleer overpass

- Description: Auxiliary Lanes and Bus on Shoulder from 41st Ave to Soquel Dr interchange on Highway 1, with new bike/ped overpass at Chanticleer Ave
- Complete Street elements: New bike/ped bridge over freeway, bus on shoulder facility
- Project Benefits: Extend merging space, improve operations, reduce traffic on local roads, reconnect community with new bike/ped bridge
- FY23/24 Measure D spent: \$1,288,671
- Total Project Cost: \$43,900,000



Highway 1: Auxiliary Lanes & Bus on Shoulder from State Park to Bay-Porter & Mar Vista overpass

- Description: Auxiliary Lanes & Bus on Shoulder facilities from State Park Dr to Bay Ave-Porter St interchange, with new bike/ped overpass at Mar Vista Dr
- Complete Street elements: New bike/ped bridge over freeway; bus on shoulder facility; replaced Capitola Ave bridge with bike lanes and sidewalks is a bike and bus route
- Project Benefits: Extend merging space, improve operations, reduce traffic on local roads, reconnect community with new bike/ped bridge
- FY23/24 Measure D spent: \$2,607,539
- Total Project Cost: \$98,700,000



Highway 1: Auxiliary Lanes & Bus on Shoulder from Freedom to State Park

- Description: Auxiliary Lanes & Bus on Shoulder facilities from Freedom Bl to State Park Dr interchange, with replaced railroad bridges over Highway 1
 - Complete Street elements: bus on shoulder facility
 - Project Benefits: Extend merging space, improve operations, reduce traffic on local roads, add standard shoulders throughout for safe emergency use
 - FY23/24 Measure D spent: \$4,753,712
 - Total Project Cost: \$231,800,000 (including Segment 12 of the coastal rail trail)
-

Cruz511 Traveler Information and Commute Manager

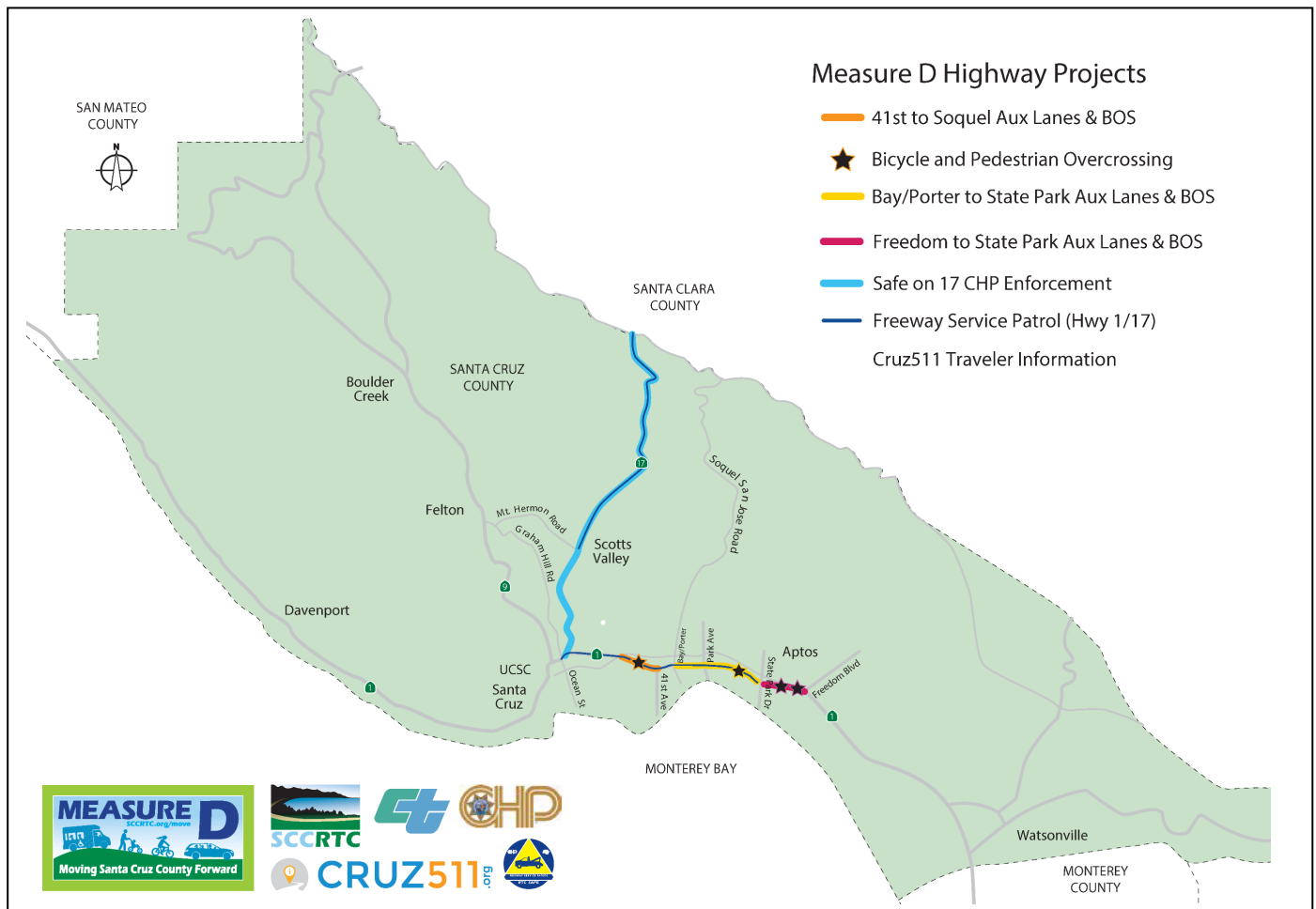
- Description: *Cruz511 Traveler Information website, outreach, mapping, carpool and bikepool matching, transit and bike trip planner, incentives*
- Complete Street elements: Incentives and resources to encourage more use of alternative modes of transportation (carpool, transit, bike, walk)
- Project Benefits: Reduction of congestion, health and safety benefits of more use of alternative modes
- FY23/24 Measure D spent: \$208,278
- Total Project Cost: ongoing



Freeway Service Patrol

- Description: Roving tow trucks removing incidents and obstructions during peak periods on Hwy 1 and Hwy 17
- Project Benefits: Safety and reduction of congestion
- FY23/24 Measure D spent: \$92,696
- Total Project Cost: ongoing

MAP OF MEASURE D PROJECT LOCATIONS



Leveraged Funds

Measure D funds have been used to leverage \$107 million in state SB1 Congested Corridors/Local Partnership funds. \$3.5 million in state Transit and Intercity Rail Program funds were also secured for the Zero Emission Passenger Rail & Trail project. \$30 million in federal MEGA funds were also secured for the combined Segment 12 + Highway 1 project in Aptos.

Planned Investments for Carryover Balances and Future Funds

The RTC adopted its most recent 5-year program of projects (plan) following a public hearing at its November 2024 meeting. The 5-year plan identifies projects the RTC plans to spend carryover balances and anticipated future Measure D funds on. All major projects in the category will continue work for the next 5 years, with major construction work for the 41st to Soquel and State Park to Bay/Porter projects expected to be complete by FY26/27.

Additional information about these projects is online at:

- The 5-year plan is online at: www.sccrtc.org/MeasureD
- <https://sccrtc.org/projects/streets-highways/hwy1/>

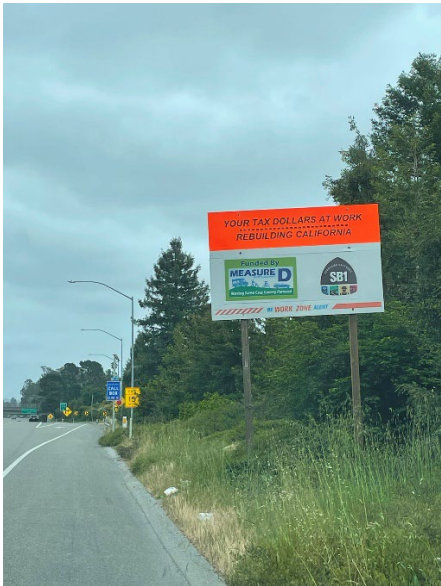
- <https://sccrtc.org/funding-planning/environmental-planning/regional-conservation-investment-strategy/>
- <https://cruz511.org/> & <https://gosantacruzcounty.org/>
- <https://sccrtc.org/services/motorist-assistance/>

Measure D Annual Report Cover Sheet - Fiscal Year 2023/24
RTC Category: Highways

Measure D Financial Information	
FY23/24 Formula Allocations	\$6,721,948
Beginning Balance (unspent prior years Measure D Revenues/carryover and Interest)	\$22,274,790
Interest earned in FY23/24 (including interest earned on balances carried over from prior years)	\$749,180
Total Measure D Funding Available in FY23/24	\$29,745,918
Total Measure D Funds Spent in FY23/24	\$9,000,897
Total Measure D Balance (Rollover to <u>FY24/25</u>)	\$20,745,021
Measure D Compliance Documents – Check with “x” documents included	
1. FY23/24 Annual Report Cover Sheet <i>(this document)</i>	X
2. FY23/24 Audited Financials for Measure D funds <i>(see “Measure D Audit Guidance” for additional information)</i>	One for all RTC categories
3. FY23/24 Expenditure Report Spreadsheet: List of projects that Measure D formula funds (direct allocations) were spent on.	Attached
a. Grouped projects supplemental information	N/A
4. Annual Report Highlights (new for FY23/24)	Attached
5. Map	See Highlights & Fact Sheets
6. Performance Measures Report Spreadsheet	N/A
7. 5-Year Program of Projects (5-Year Plan)	Attached
8. Ongoing Public Outreach for Projects Using Measure D Funds	
a. Description of Public Outreach Process: RTC regularly provided construction updates to the public. Several news articles were written about the projects. Fact sheets and other information on the project are available on the RTC and Caltrans websites. The RTC used a variety of channels to reach the public to inform them of and gather input on the different projects, social media, RTC website, enews, in-person and virtual public meetings and workshops, surveys, etc. Signage at construction sites and on public outreach materials also include information that the project was funded by Measure D.	
b. Sample(s) of public outreach on Measure D-funded projects conducted during the reporting year <i>(Attach samples or provide links to outreach. This is not the adoption of your 5-Year Plan)</i> <ul style="list-style-type: none"> https://www.sccrtc.org/rtc-seeks-public-input-on-aesthetic-design-elements-for-the-highway-1-auxiliary-lanes-bus-on-shoulder-and-coastal-rail-trail-segment-12-project/ 	

<ul style="list-style-type: none"> • https://www.sccrtc.org/rtc-launches-online-survey-to-gather-input-on-aesthetic-design-elements-for-hwy-1-aux-lanes-bus-on-shoulder-and-coastal-rail-trail-segment-12-project/ • https://www.sccrtc.org/final-environmental-impact-report-environmental-assessment-for-highway-1-from-state-park-drive-to-freedom-boulevard-and-coastal-rail-trail-segment-12-project-now-available/ 	
c. Website with Measure D information <i>(per Article III.A.7.)</i>	Web address: https://sccrtc.org/funding-planning/measured/
d. News Article: <i>(Attach a copy of or weblink to at least one news article or press release about Measure D-funded projects in the past fiscal year. News release should inform public that project is funded by Measure D. Per Article III.A.8.)</i>	
<ul style="list-style-type: none"> • https://www.santacruzsentinel.com/2023/11/28/santa-cruz-rtc-seeks-aesthetic-design-input-for-highway-1-project/ • https://www.santacruzsentinel.com/2024/01/16/photo-work-progresses-on-pedestrian-overpass-in-santa-cruz/ • https://pajaronian.com/work-continues-on-new-bike-pedestrian-bridge-spanning-highway-1/ • https://www.santacruzsentinel.com/2024/04/09/photo-overpass-cleared-as-part-of-highway-1-project/ • https://www.santacruzsentinel.com/2024/04/12/highway-1-project-continues-with-phase-two-launch-in-aptos/ 	

- e. Signage:** (Photos of Measure D logo on signs at construction sites and on public education materials/websites.) Hwy 1, Phase 2 Groundbreaking event; sign along Hwy 1



- f. Evidence that the 5-year program of projects adopted at the start of FY23/24, and subsequent decisions programming & budgeting Measure D funds, were approved through a public process.** (List webpages/links and dates of decisions or attach staff report, resolutions, public hearing notice, committee meetings, etc)

i. Public hearings at [RTC meetings](#):

- [11/2/23](#): FY23/24-27/28 5-year plans
 - News Release: <https://www.sccrtc.org/rtc-seeking-input-on-use-of-measure-d-funds-on-regional-highway-trail-rail-and-lift-line-projects/>

ii. Advisory Committee Review of draft plans: October 2023

<ul style="list-style-type: none"> • Bicycle Committee • Elderly and Disabled Transportation Advisory Committee (E&D TAC) • Interagency Technical Advisory Committee (ITAC) 	
iii. 5-Year Plan for Highways category amended at public RTC meetings on 6/6/24 and 9/5/24	
<ul style="list-style-type: none"> • Date of 5-Year Plan Public Hearing soliciting input on 5-Year Plan <i>(per Article III.A.4.)</i> 	Date: 11/2/23
<ul style="list-style-type: none"> • Date annual 5-year Plan approved by Governing Board 	Date: 11/2/23. Amendments for Highways on 6/6/24 & 9/5/24
g. Photos: <i>(Attach before/after and construction photos if available of projects/work done in the reporting year.)</i>	See Highlights Doc
h. Fact Sheets on larger projects	Attached
9. Maintenance of Effort	N/A
10. Planned Use of Fund Balances & Potential Liabilities	
<p>a. Fund Balances, Carryover Projects, and Description of planned, longer-term and future uses of Measure D revenues, if known.</p> <ul style="list-style-type: none"> • The fund balance (funds that have not yet been expended) is kept in a separate trust fund and tracked via the accounting system ledgers and programming spreadsheets. • <u>Balances & Financing:</u> As shown in the Measure D 5-year plan, the RTC has committed the balance of Measure D revenues, plus future funds for the three Highway 1 auxiliary lanes/bus-on-shoulder projects. Depending on when and how much additional grant funding is secured, RTC has agreed to secure financing to accelerate delivery and meet grant deadlines, if needed. Staff estimates that financing will be needed as early as FY25/26. • <u>Phase 1: Soquel Drive to 41st Avenue</u> – FY2023/24 Measure D revenues were added to the project to fully fund construction of the auxiliary lanes and bus-on-shoulder facilities between 41st Avenue and Soquel Drive (Phase 1), which started construction in early 2023. The project includes a new bicycle/pedestrian bridge over Highway 1 at Chanticleer Avenue. Measure D was used to leverage state grants for the project. • <u>Phase 2: Bay/Porter to State Park Drive</u> – During FY2023/24 the RTC completed final design and right-of-way activities for the Highway 1 auxiliary lanes and bus-on-shoulder project between the State Park Drive and Bay-Porter interchanges (Phase 2), including a new bicycle/pedestrian bridge over Highway 1 at Mar Vista Drive and replacement of the Capitola Avenue overcrossing. Caltrans awarded a construction contract in May 2023. Measure D was used to leverage state grants for the project. • <u>Phase 3: State Park Drive to Freedom Boulevard, including Segment 12 of the Coastal Rail Trail</u> – Continuance of right of way work occurred and intermediate design was reached for Highway 1 hybrid auxiliary lanes and bus-on-shoulder facilities between Freedom Boulevard-Rio Del Mar-State Park Drive (Phase 3) continued in FY2023/24. The Phase 3 project also includes the 1.25 mile Segment 12 of the Rail Trail from State Park Drive to Rio Del Mar Boulevard. The 	

environmental review is funded by a combination of Measure D and state SB1 Local Partnership Program formula funds, which are available to the region because of Measure D. The RTC and Caltrans secured \$30 million from the National Infrastructure Project Assistance (Mega) program in FY2022/23, using Measure D as match. The Phase 3 project is expected to be construction-ready in 2025.

- Interprogram Loans: In order to expedite delivery of the Highway 17 Wildlife Project and reduce debt service paid from Measure D revenues, and because of grants secured from the state for Highway 1 projects, the RTC in the past approved an inter-program loan of some Highway Corridor funds. The Wildlife Crossing loan is being repaid with interest to the Highway Corridors “bucket”.

b. Future Liabilities: *(Describe possible liabilities, including information on how future costs for projects not yet completed are anticipated to be funded.)*

In order to avoid delays and accelerate delivery of the section of auxiliary lanes between State Park Dr and Freedom Blvd, RTC continues to seek grant funding. RTC has agreed to secure financing if needed to meet grant deadlines.

While the RTC successfully secured over \$90 million in competitive SB1 Solutions for Congested Corridors Program (SCCP) and Local Partnership Program (LPP) grants from the California Transportation Commission (CTC) in 2020 for Highway 1 Auxiliary Lanes and bus on shoulder and bike/ped crossings between Soquel Dr and State Park Dr interchanges, if actual costs are higher, the RTC is responsible for covering the difference and may need to use additional Measure D funds.

The Measure D 5-year plan and 2023 [Strategic Implementation Plan](#) provide additional information on Measure D fund management and long term planned use of Measure D revenues.

Required Attachments:

- ☐ Measure D Audited Financial Statement
- ☐ Expenditure Report (spreadsheet)
 - ☐ Details for grouped projects, if applicable and not provided above (e.g. location/limits, summary of work done, schedule)
- ☐ Measure D Annual Report Highlights
- ☐ Map(s) of Measure D-funded projects
- ☐ Measure D 5-Year Program of Projects
- ☐ Evidence of public outreach/process for Measure D expenditures (e.g. notices, news releases, board resolutions/staff reports, etc. Links to documents okay.)
 - ☐ News Article or News Release about projects funded by Measure D
 - ☐ Signage photos
- ☐ Photos of project locations (before/after)
- ☐ Fact Sheets for major projects

planning/shared documents/measure d/fy2024expenditurereports/rtc/3c. cover sheet-highways.docx

3.

MEASURE D EXPENDITURE REPORT

Reporting Year

FY23/24

Recipient Agency/Investment Category

SCCRTC- Highway Corridors

		Project Description/Location			Leveraged Funds, if any			
#	Project Name	Project Description (may include additional project components, ex. complete streets, traffic calming, crossing improvements, drainage upgrades, etc.)	Location/Limits (if grouped project, list each location/limit)	Work Done in FY23/24	FY23/24 Measure D Expenditures	Leveraged Fund Amounts (grants & other funds where Meas. D used as match)	Leveraged Fund Source(s) Name(s)	Total Project Cost
1	Highway 1: Auxiliary Lanes and Bus on Shoulder from 41st to Soquel; Chanticleer Bike/Pedestrian Overcrossing	Freeway operational improvement, bus on shoulder improvements, rehab roadway and drainage, improve bicycle/pedestrian access over freeway.	Aux lanes: Highway 1 between 41st Ave to Soquel Dr/Ave interchanges; Bike/Ped Bridge: Chanticleer Ave over Hwy 1	Began construction for Chanticleer bridge, widening of highway, and shoulder work	\$1,288,671	\$ 35,301,608	STIP, HIP, SCCP	\$43.9M
2	Highway 1: Auxiliary Lanes & Bus on Shoulder from State Park to Bay-Porter, Reconstruction of Capitola Avenue Overcrossing and Bicycle/Pedestrian Overcrossing at Mar Vista Dr	Freeway operational improvement, bus on shoulder improvements, soundwalls and retaining walls, reconstruct Capitola Ave. overcrossing with sidewalks and bike lanes. New bike/ped bridge at Mar Vista.	Aux lanes: Highway 1 between State Park Dr and Bay/Porter interchanges; Bike/Ped Bridge: Mar Vista Dr over Hwy 1	Completion of final design, right-of-way	\$2,607,539	\$ 76,285,000	STIP, SB1 SCCP & LPP	\$98.7M
3	Highway 1: Auxiliary Lanes & Bus on Shoulder from Freedom to State Park, and Reconstruction of two railroad bridges, and widening of the bridge over Aptos Creek/Spreckles Drive	Freeway operational improvement, bus on shoulder improvements, soundwalls and retaining walls, reconstruct 2 railroad bridges and widen bridge over Aptos Creek/Spreckles Drive	Aux lanes & Bus-on-shoulder: Highway 1 between Freedom Blvd and State Park interchanges; Bike/Ped Bridge/Rail bridges over Hwy 1 in Aptos	Right of way, completion of intermediate design	\$4,753,712	\$ 31,490,000	SB 1 Local Partnership Program (LPP) -formula, MEGA; STIP	\$231.8M (includes Seg 12 rail trail)
5	Cruz 511-Traveler Information and Commute Manager (Go Santa Cruz County)	Ongoing system & demand management (TDM), includes Cruz511.org traveler information, carpool and other TDM programs	Countywide	Ongoing public info and assistance	\$208,278	\$ -		ongoing
6	Safe on 17	Ongoing system management program, involves increased CHP enforcement on Highway 17	Highway 17	CHP service	\$50,000	\$ -		ongoing
7	Freeway Service Patrol	Ongoing system management and congestion reducing program. Roving tow trucks removing incidents and obstructions during peak travel periods on Hwy 1 and Hwy 17	Hwy 1: Hwy 9-State Park; Hwy 17: Hwy 1-Summit	Roving tow trucks	\$92,696	\$ -		ongoing

1-RCIS funded from several Measure D investment categories

\$9,000,896.00	\$ 143,721,608
----------------	----------------

MEASURE D EXPENDITURE REPORT

#	Project Name	Consistency with 5-year plan		Stats - if applicable				Other
		Project in approved 5-year plan?	If not in 5-year plan or different amount or scope, why different?	New Bike Lane Miles	New Ped Path or Sidewalk Miles	Miles of pavement rehab/repair (pothole, seals, etc)	If Complete Streets not incorporated into project, why not?	Other Notes or Information (optional)
1	Highway 1: Auxiliary Lanes and Bus on Shoulder from 41st to Soquel; Chanticleer Bike/Pedestrian Overcrossing	Yes	na	0.4	0.2	1.4	Part of project	
2	Highway 1: Auxiliary Lanes & Bus on Shoulder from State Park to Bay-Porter, Reconstruction of Capitola Avenue Overcrossing and Bicycle/Pedestrian Overcrossing at Mar Vista Dr	Yes	na	0.5	0.2	3.8	Part of project	
3	Highway 1: Auxiliary Lanes & Bus on Shoulder from Freedom to State Park, and Reconstruction of two railroad bridges, and widening of the bridge over Aptos Creek/Spreckles Drive	Yes	na	1.15	1.15	2.5	Part of project	
5	Cruz 511-Traveler Information and Commute Manager (Go Santa Cruz County)	Yes	na	na	na	na	Part of program	
6	Safe on 17	Yes	na	na	na	na	na	
7	Freeway Service Patrol	Yes	na	na	na	na	na	

1-RCIS funded from several Measure D investment ca

2.05	1.55	7.70
------	------	------

Measure D: 5-Year Program of Projects (FY23/24-FY27/28)

Highway Corridors (25% of Measure D Revenues)Approved 11/2/23

Previously updated 6/6/19, 6/27/19, 2/6/20, 3/5/20, 5/7/20, 9/3/20, 11/5/20, 12/3/20, 3/4/21, 10/7/21, 5/5/22, 9/1/22, 11/3/22, 5/4/23.

	Project	Description	Schedule	Prior Years Spent	FY22/23 Est. Actuals*	Planned ¹					Total through FY27/28 Measure D	Future Years	Total (including Future capital)	Proposed Updates
						FY23/24	FY24/25	FY25/26	FY26/27	FY27/28				
1	Highway 1: Auxiliary Lanes and Bus on Shoulder from 41st to Soquel; Chanticleer Bike/Pedestrian Overcrossing	Freeway operational improvement, bus on shoulder improvements, rehab roadway and drainage, improve bicycle/pedestrian access over freeway.	Construction started e. 2023.	\$1,242,132	\$468,125	\$2,311,643	\$781,100	\$125,000	\$50,000	\$25,000	\$5,003,000	\$25,000	\$5,028,000	No change to total. Some funds moved between years.
2	Highway 1: Auxiliary Lanes & Bus on Shoulder from State Park to Bay-Porter, Reconstruction of Capitola Avenue Overcrossing and Bicycle/Pedestrian Overcrossing at Mar Vista Dr	Freeway operational improvement, bus on shoulder improvements, soundwalls and retaining walls, reconstruct Capitola Ave. overcrossing with sidewalks and bike lanes, new Bike/ped bridge	Start construction Fall 2023. Estimated 2.5 years of construction	\$5,117,294	\$633,979	\$7,386,728	\$6,620,000	\$2,550,000	\$175,000	\$25,000	\$22,508,001	\$50,000	\$22,558,001	No change to total. Some funds moved between years.
3	Highway 1: Auxiliary Lanes & Bus on Shoulder from Freedom to State Park and Segment 12 Coastal Rail Trail	Freeway operational improvement, bus on shoulder, soundwalls and retaining walls, bridges over Hwy 1 and widen bridge over Aptos Creek/Spreckles Drive, portion of Segment 12 of the Coastal Rail Trail -including 2 new bicycle/pedestrian overcrossings over Highway 1	Start construction 2025, pending fund availability	\$1,901,894	\$4,098,245	\$6,924,831	\$3,169,000	\$23,605,974	\$32,390,667	\$32,390,667	\$104,481,277	\$19,508,722	\$123,990,000	Increase \$540k for anticipated additional project management and support.
4	Santa Cruz County Regional Conservation Investment Strategy - Grant match	Match to Wildlife Conservation Board grant for early mitigation planning for transportation projects.	Complete FY22/23	\$23,079	\$2,421						\$25,500	\$0	\$25,500	No change
5	Cruz 511-Traveler Information and Commute Manager	Ongoing system & demand management (TDM), includes Cruz511.org traveler information, GoSantaCruzCounty.org, carpool and other TDM programs	Ongoing	\$445,784	\$200,000	\$210,000	\$220,500	\$231,000	\$243,000	\$255,150	\$1,805,434	Ongoing	\$1,805,434	Add \$255k in FY27/28
6	Safe on 17	Ongoing system management program, involves increased CHP enforcement on Highway 17	Ongoing	\$109,347	\$42,746	\$50,000	\$50,000	\$50,000	\$50,000	\$50,000	\$402,093	Ongoing	\$402,093	Add \$50k in FY27/28
7	Freeway Service Patrol	Ongoing system management and congestion reducing program. Roving tow trucks removing incidents and obstructions during peak travel periods on Hwy 1 and Hwy 17	Ongoing	\$523,212	\$169,532	\$190,000	\$200,000	\$210,000	\$220,000	\$231,000	\$1,743,744	Ongoing	\$1,743,744	Add \$231k in FY27/28 and update FY22/23 actuals.
	Completed Projects	Unified Corridor Investment Study-Analysis of Highway 1 corridor projects	Completed Jan 2019	\$199,808	\$0	\$0	\$0	\$0	\$0		\$199,808		\$199,808	No change
Estimated Annual Measure D Highway Corridors Expenditures				\$9,562,549	\$5,615,048	\$17,073,203	\$11,040,600	\$26,771,974	\$33,128,667	\$32,976,817	\$136,168,856	\$19,583,722	\$155,752,578	
8	Interprogram Loan for Hwy 17 Wildlife Crossing	Interprogram loan to allow Hwy 17 Wildlife Crossing project to proceed without bonding and loan repayments	Interprogram Loan FY22/23	\$0	\$1,525,724	\$1,308,864	-\$166,667	-\$166,667	-\$166,667	-\$166,667	\$2,167,922	-\$166k/year	Est. \$957k interest	Interprogram loan and repayment pushed out based on Highway 17 Wildlife Crossing project expenditure timing.
Total Expenditures (with loans & repayments)				\$9,562,549	\$7,140,772	\$18,382,067	\$10,873,933	\$26,605,307	\$32,962,000	\$32,810,150	\$138,336,779			

Notes:

1- Funds may be shifted between years based on actual expenditures/use rates when sufficient cash capacity exists.

*FY22/23 reflects preliminary estimates to be adjusted based on audited financials.



PROJECT FACT SHEET

Updated April 2025

Highway Corridor: Highway 1 Aux Lanes, BOS (41st Avenue to Soquel Drive), and Chanticleer Bicycle/Pedestrian Overcrossing

Project Description

The project will construct northbound and southbound auxiliary lanes and bus-on-shoulder improvements between the 41st Avenue and Soquel Avenue/Drive interchanges, and construct a new bicycle and pedestrian overcrossing at Chanticleer Avenue. Historically, this section of Highway 1 has been the busiest in the county, serving over 100,000 vehicles a day, providing access to the primary regional commercial/retail activity centers on 41st Avenue and regional medical facilities located on Soquel Drive. The auxiliary lanes will connect the on-ramps with the next off-ramp, thereby extending the weaving and merging distance between the ramps, improving traffic operations, and reducing cut-through traffic diverting to local streets and neighborhoods.

The bicycle/pedestrian overcrossing at Chanticleer Avenue provides an alternative route for bicyclists and pedestrians currently using the Soquel or 41st interchanges to cross over Highway 1. The overcrossing will be lighted, 12- to 14-foot wide, and will incorporate aesthetic treatments consistent with the visual character of the corridor and the adjacent community.

Unified Corridor Investment Study

Recognizing the need to address both existing transportation problems and future needs of Santa Cruz County, a Unified Corridor Investment Study (UCS) was undertaken to consider transportation options between Santa Cruz and Watsonville along three of the most important north to south transportation routes in the County, including the Highway 1 corridor. The study provides a rigorous analysis of how various groups of projects or scenarios advance the transportation goals of Santa Cruz County.



Project Highlights

- ▶ Improves traffic operations on Highway 1
- ▶ Improves bicycle and pedestrian connectivity to regional destinations and transit by providing a dedicated crossing for active transportation users at Chanticleer Avenue
- ▶ Adds infrastructure for buses to travel in the auxiliary lanes between interchanges and on the outside shoulder through interchanges
- ▶ Measure D funds are being used to accelerate the project development process
- ▶ Construction began in 2023 and is expected to be complete in 2025.

Project Delivery Strategy

The RTC is leading the delivery of this project. Measure D-Highway Corridor funds and other RTC discretionary funds were used to complete the work necessary to ready the project for construction, and as a match for SB1 construction grants. This project received funds from Cycle 2 of the SB1 Solutions to Congested Corridors Program and Local Partnership Program competitive funds.



PROJECT FACT SHEET

Updated April 2025

Highway Corridor: Highway 1 Aux Lanes, BOS (41st Avenue to Soquel Drive), and Chanticleer Bicycle/Pedestrian Overcrossing

Project Funding

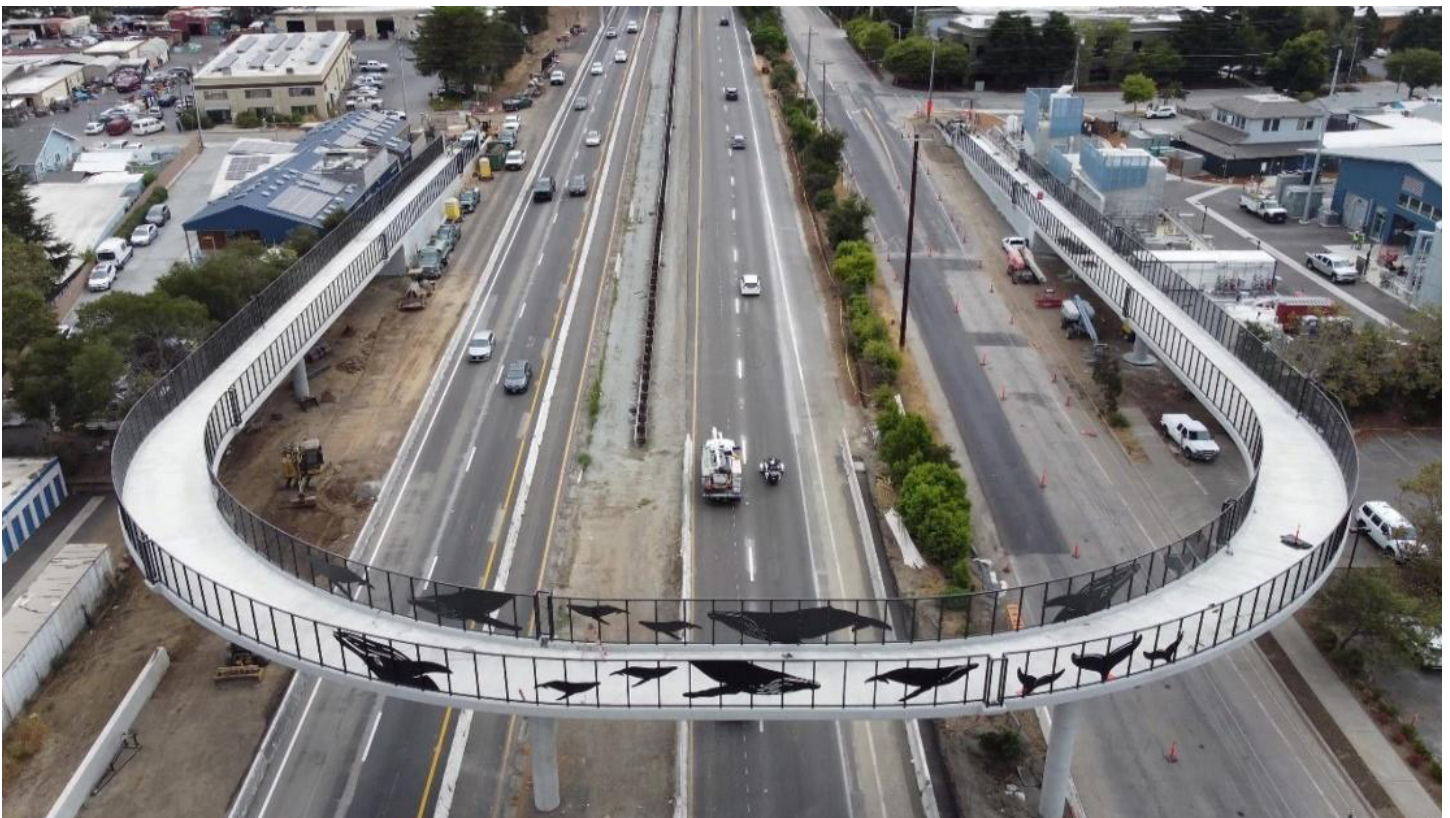
Estimated Project Cost	\$	43.9M
Funding Sources		
Measure D (Highway)	\$	7.5M
Other Secured*	\$	36.4M

*Includes STIP, SB1 (SCCP and LPP programs) and HIP funds.



Project Status/Schedule

Construction will be completed in 2025.





PROJECT FACT SHEET

Updated April 2025

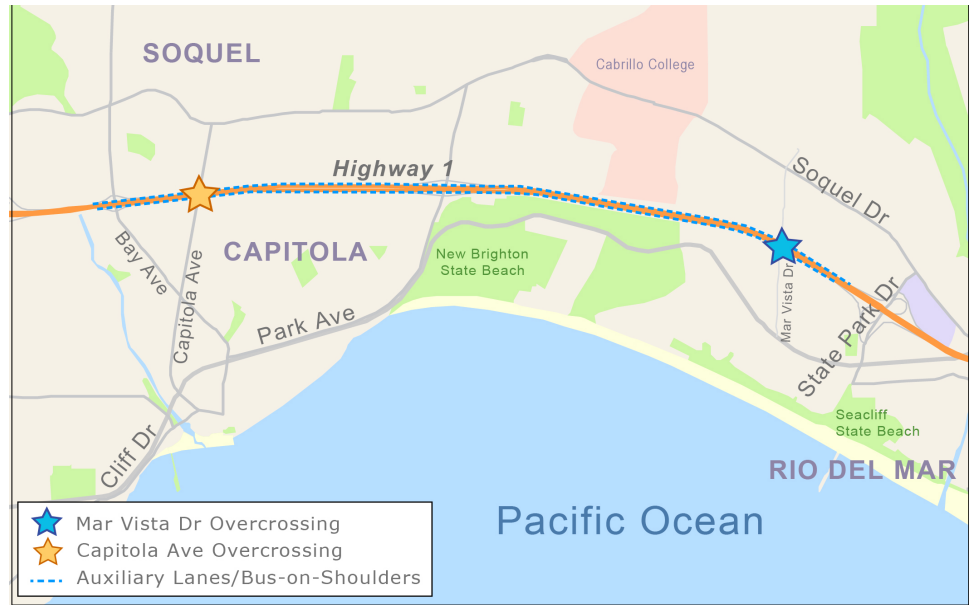
Highway Corridor: Highway 1 Aux Lanes, BOS (Bay Avenue/Porter Street to State Park Drive), and Mar Vista Bicycle/Pedestrian Overcrossing

Project Description

The project will construct northbound and southbound auxiliary lanes and bus-on-shoulder improvements between the Bay Avenue/Porter Street and State Park Drive interchanges and replace the existing Capitola Avenue local roadway overcrossing. This section of Highway 1 is one of the busiest in the county, providing access to the City of Capitola, Soquel and Aptos villages, and Cabrillo College. The auxiliary lanes will connect the on-ramps with the next off-ramp, thereby extending the weaving and merging distance between the ramps, improving traffic operations, and reducing cut-through traffic diverting to local streets and neighborhoods.

The new Capitola Avenue overcrossing will include enhanced bicycle and pedestrian facilities to improve connectivity for bicyclists and pedestrians between Soquel Drive to the north and the future Coastal Rail Trail to the south. The overcrossing, soundwalls, and retaining walls will incorporate aesthetic treatments consistent with the visual character of the corridor and the adjacent community.

The project also includes a new bicycle and pedestrian overcrossing (POC) at Mar Vista Drive to provide a safe link between schools, the beach, residential neighborhoods and retail centers on each side of Highway 1. This POC was one of three bicycle and pedestrian overcrossings identified in the Highway 1 Corridor Investment Plan.



Project Highlights

- ▶ Improves traffic and safety operations on Highway 1
- ▶ Reduces cut-through traffic diverting to local streets and neighborhoods by adding auxiliary lanes between Bay Avenue/Porter Street and State Park Drive
- ▶ Improves bicycle and pedestrian connectivity to regional destinations and transit by providing enhanced bicycle and pedestrian facilities for active transportation users at Capitola Avenue
- ▶ Improves bicycle and pedestrian connectivity to regional destinations and transit by providing a dedicated crossing for active transportation users at Mar Vista
- ▶ Adds infrastructure for buses to travel in the auxiliary lanes between interchanges and on the outside shoulder through interchanges
- ▶ Connects neighborhoods, schools, parks/beaches and commercial centers

Project Delivery Strategy

The RTC is leading the delivery of this project. Measure D-Highway Corridor funds and other RTC discretionary funds were used to complete the work necessary to ready the project for construction. The RTC was successful in securing Cycle 2 SB1 Solutions to Congested Corridors and Local Partnership Program competitive funds in 2020, which fully funded construction of this project.



PROJECT FACT SHEET

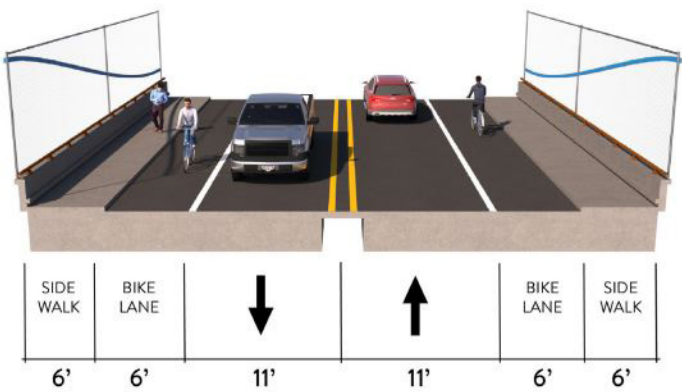
Updated April 2025

Highway Corridor: Highway 1 Aux Lanes, BOS (Bay Avenue/Porter Street to State Park Drive), and Mar Vista Bicycle/Pedestrian Overcrossing

Project Funding

Estimated Total Cost	\$	98.7M
Funding Sources		
Measure D (Highway)	\$	22.4M
Other Secured*	\$	76.3M

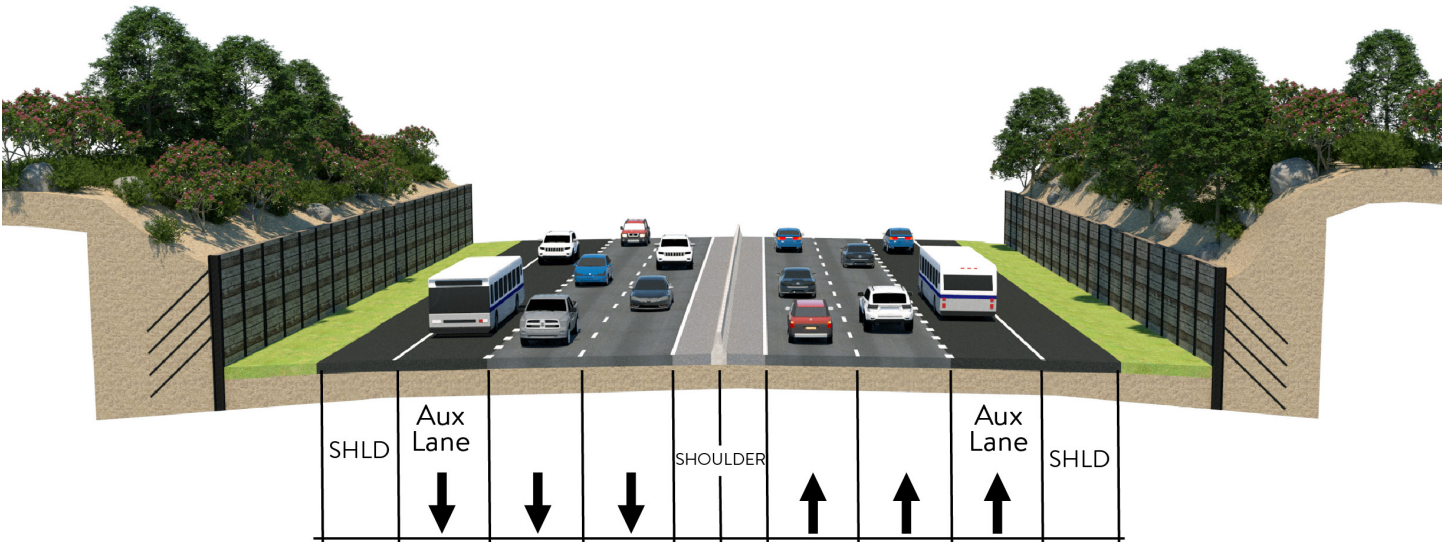
*Includes STIP and SB1 (SCCP and LPP programs) funds.



Preliminary rendering of Capitola Avenue Overcrossing

Project Status/Schedule

The project is under construction and is expected to be completed in 2026.



Preliminary rendering of auxiliary lanes



PROJECT FACT SHEET

Updated March 2025

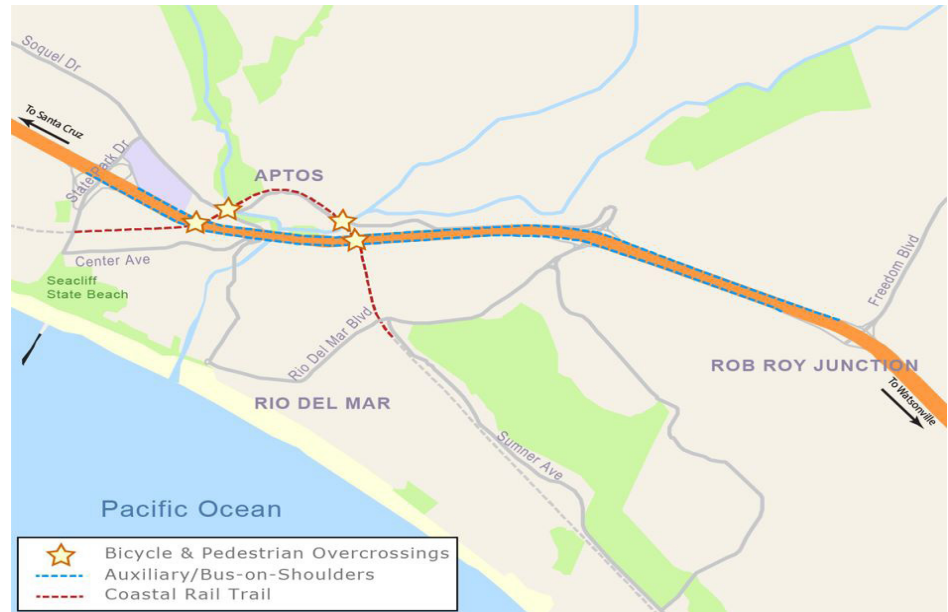
Highway Corridors: Highway 1 Aux Lanes and BOS (State Park Drive to Freedom Boulevard), and Coastal Rail Trail Segment 12

Project Description

The project will construct multimodal improvements to enhance transit frequency and on-time performance, and safety and mobility for vehicles, transit, bicycles, and pedestrians. The project includes northbound and southbound auxiliary lanes and bus-on-shoulder improvements between the State Park Drive and Freedom Boulevard interchanges, replaces the two existing railroad bridges between the State Park Drive and Rio del Mar interchanges, and widens the Aptos Creek bridge. This section of Highway 1 provides access to Aptos Village, Rio del Mar, Aptos High School, and Aptos Hills/Corralitos. The auxiliary lanes will connect the on-ramps with the next off-ramp, thereby extending the weaving and merging distance between the ramps, improving traffic operations, and reducing cut-through traffic diverting to local streets and neighborhoods.

The existing railroad bridges will be replaced with longer span bridges to accommodate the addition of auxiliary lanes on Highway 1. The Highway 1 bridge over Aptos Creek and Spreckles Drive will be widened as part of the project. The new bridges, soundwalls, and retaining walls will incorporate aesthetic treatments consistent with the visual character of the corridor and the adjacent community.

This project also includes construction of Segment 12 of the Coastal Rail Trail, a bicycle and pedestrian trail along an approximately 1.25-mile segment of the Santa Cruz Branch Rail Line right-of-way from State Park Drive to Rio Del Mar Boulevard.



Project Highlights

- Improves traffic and safety operations on Highway 1
- Adds infrastructure for buses to travel in the auxiliary lanes between interchanges and on the outside shoulder through interchanges
- Reduces cut-through traffic diverting to local streets and neighborhoods by adding auxiliary lanes between State Park Drive and Freedom Boulevard
- Provides a dedicated bicycle and pedestrian trail, improving safety and connectivity to schools, commercial centers, and transit facilities
- Improves active transportation connectivity by constructing 4 dedicated bicycle/pedestrian overcrossings

Project Delivery Strategy

The RTC is leading the delivery of this project. Measure D-Highway Corridor and Active Transportation funds and other RTC discretionary funds will be used to complete preconstruction work and as a match for future grants. The project will evaluate a Trail Next to the Railroad Track Alignment ("Ultimate Trail Configuration") and a Trail on the Railroad Track Alignment ("Interim Trail") as an optional first phase. RTC is targeting outside grant opportunities to fully fund construction of the project.



PROJECT FACT SHEET

Updated March 2025

Highway Corridors:
Highway 1 Aux Lanes and BOS (State Park
Drive to Freedom Boulevard), and Coastal
Rail Trail Segment 12

Project Funding

Estimated Total Cost	\$	231.8M
Funding Sources		
Measure D	\$	106.8M
Other Secured	\$	43.7M*
Needed	\$	81.3M

*Federal MEGA grant, state LPP grant, SHOPP, STIP



Project Status/Schedule

The environmental phase of this project was completed in 2024. The project is scheduled to be construction-ready in 2026 pending availability of funds for construction.





Highway Corridors: Cruz511

Program Description

For more than 35 years, the RTC has offered transportation demand management (TDM) services to Santa Cruz County with the goal of using the existing transportation system more effectively by assisting travelers to use various modes of transportation, especially sustainable transportation modes. TDM programs use a multi-pronged approach to incentivize and support mode share changes to non-drive alone methods of transportation.

Cruz511, the RTC's TDM service, provides a comprehensive website of resources for travel options around the county, including a trip planner, bicycle maps, accessible travel options, and an interactive traffic map with real-time information on travel speeds, incident details, and lane closures on county roads and state highways. Knowledgeable travel counselors are also available to help people understand their options for getting around.

The Cruz511 program works with non-profits and community-based organizations to deliver messaging around transportation safety. Staff works closely with agencies implementing Vision Zero plans and campaigns around the county by providing resources and guidance. Cruz511 also provides a hazard reporting system where members of the public can report issues that impede access and mobility on our roadway networks.

In Spring 2021, Cruz511 launched GO Santa Cruz County, an online commute management platform that rewards sustainable commuting. Participants earn points for each eligible trip logged on the platform or mobile app. Points can then be redeemed for electronic gift cards, entries into the monthly raffle, or donated to a local nonprofit. Learn more at www.gosantacruzcounty.org.



Program Highlights

- ▶ Provides sustainable commute choices to residents through coordination with major employers in the county
- ▶ Hosts an online and mobile platform to make sustainable commute choices easier for all people to access
- ▶ Coordinates with Metro to promote and encourage transit usage
- ▶ Provides education and informational messaging regarding safety and mobility options to the public

Total Programming

Total Funding	\$ 300,000/year avg.
Funding Sources	
Measure D (Highway)	\$ 2.1M
Other Sources**	\$ 995,000

*Amounts show money programmed beginning in FY17/18 when Measure D funds first became available.

**Includes STBG, RSTPX, STIP, SAFE, City of Santa Cruz and Fund Interest funds



PROJECT FACT SHEET

Updated April 2025

Highway Corridors: Cruz511



Rethink Your Commute and Earn Rewards!

GO  **SANTA CRUZ COUNTY**





Highway Corridors: Freeway Service Patrol

Program Description

The Santa Cruz County Regional Transportation Commission (RTC) operates the Freeway Service Patrol (FSP) program in Santa Cruz County in conjunction with the Department of Transportation (Caltrans) and the California Highway Patrol (CHP). This program consists of two tow trucks patrolling Highway 1 from Highway 9 to State Park Drive and Highway 17 from Mount Herman Road to the Santa Clara County Line.

FSP tow trucks remove disabled vehicles from the highway at no cost to motorists. They reduce congestion on the highway by quickly clearing accidents, debris, and other incidents, and allowing traffic to return to normal conditions. They commonly perform tasks such as changing a flat tire, jump-starting a vehicle, or providing gas. Service is available during weekday commute hours and on a limited schedule on weekends.

The FSP program is designed to reduce congestion, improve safety, and reduce fuel consumption and auto emissions by minimizing the congestion associated with collisions and other incidents.



Program Highlights

- ▶ Reduces the number of traffic jams by quickly clearing accidents, debris, and other incidents
- ▶ Lessens the chain of further accidents and bottlenecks caused by passing drivers
- ▶ Saves fuel and cuts air-pollution emissions by reducing stop-and-go traffic
- ▶ Helps stranded motorists

Service Schedule

	WEEKDAYS		WEEKENDS	
	AM	PM	Saturday	Sunday
Hwy 1	6:00-9:00 a.m.	3:30-6:30 p.m.	No regular weekend service*	
Hwy 17	6:30-9:30 a.m.	3:30-6:30 p.m.	None	1:00-7:00 p.m.

*Special weekend service is provided during Spring Break and Summer.



PROJECT FACT SHEET

Updated April 2025

Highway Corridors: Freeway Service Patrol

Total Programming*

Total Funding Secured	\$ 350,000/year avg.
Funding Sources	
Measure D (Highway)	\$ 1.9M (FY17/18-FY28/29)
Other Secured**	\$ 1M

*Amounts show money programmed beginning in FY17/18 when Measure D funds first became available.

**Includes SB1, FSP, and STIP funds.



FSP Partners





Highway Corridors: Safe on 17

Program Description

The Highway 17 corridor was identified as a high-collision corridor in 1998 as a result of collision data analysis and recommendations of local, regional, county, and state agencies. The Safe on 17 Task Force was formed to develop and implement collision reducing strategies, such as additional CHP enforcement, traffic safety improvements, and public education. These strategies focus on preventing the occurrence of the top five Primary Collision Factors in fatal and injury collisions including driving at unsafe speeds, vehicle right-of-way violations, improper turning, and improper lane change.

The Task Force is comprised of representatives from the Santa Cruz County Regional Transportation Commission (RTC), the San Francisco Bay Area's Metropolitan Transportation Commission (MTC), the California Highway Patrol (CHP), the California Department of Transportation (Caltrans), local police and fire departments, legislators' offices, and the media. The RTC and MTC provide \$100,000 annually for enhanced CHP enforcement using Service Authority for Freeway Emergencies (SAFE) funds. SAFE funds come from a \$1 registration fee on all vehicles in the region and fund the highway call box system, Freeway Service Patrols on Highways 1 and 17 in addition to extra CHP enforcement on Highway 17, and other motorist-aid services. The RTC provides an additional \$50,000 annually to the program from Measure D funds.



Program Highlights

- ▶ Multi-agency, multi-jurisdictional effort to reduce injury and fatal collisions on Highway 17
- ▶ Encourages safer driving and deters traffic violations with extra CHP enforcement
- ▶ Implements road safety improvements to reduce wet weather and run-off-road collisions through guardrail upgrades, shoulder widening projects, and pavement surface treatments
- ▶ Increases safe driving practices, especially on mountainous highway roads, through education and public outreach

Meeting Schedule

The Safe on 17 Task Force meets twice a year to share information about transportation projects and collisions on Highway 17 and traffic operation systems in Santa Cruz County. Meetings are open to the public and all are welcome to attend. A teleconference option is available for those unable to attend meetings in person.

SAFE ON 17 MEETINGS	LOCATION	ADDRESS
3rd Wednesday in March	CHP San Jose	2020 Junction Ave., San Jose, CA
3rd Wednesday in September	RTC office	1523 Pacific Ave., Santa Cruz, CA



Highway Corridors: Safe on 17

Total Programming

Total Funding	\$ 150,000/year
Funding Sources	
Measure D (Highway)*	\$ 50,000/year
Other Secured**	\$ 100,000/year

*In FY17/18 Measure D funds first became available.

**Includes MTC-SAFE and DMV-SAFE funds.

