



Category: Hwy 9/SLV

Measure D

2016 Santa Cruz County Transportation Sales Tax

Fiscal Year 2023/24 Highlights

FY23/24 Measure D Revenue and Expenditure Snapshot

Measure D Allocation	\$333,333
Interest earnings & adjustments	\$69,456
Carryover from Prior Years	\$1,718,123
Expenditures	\$25,953
Carryover Balance	\$2,094,959

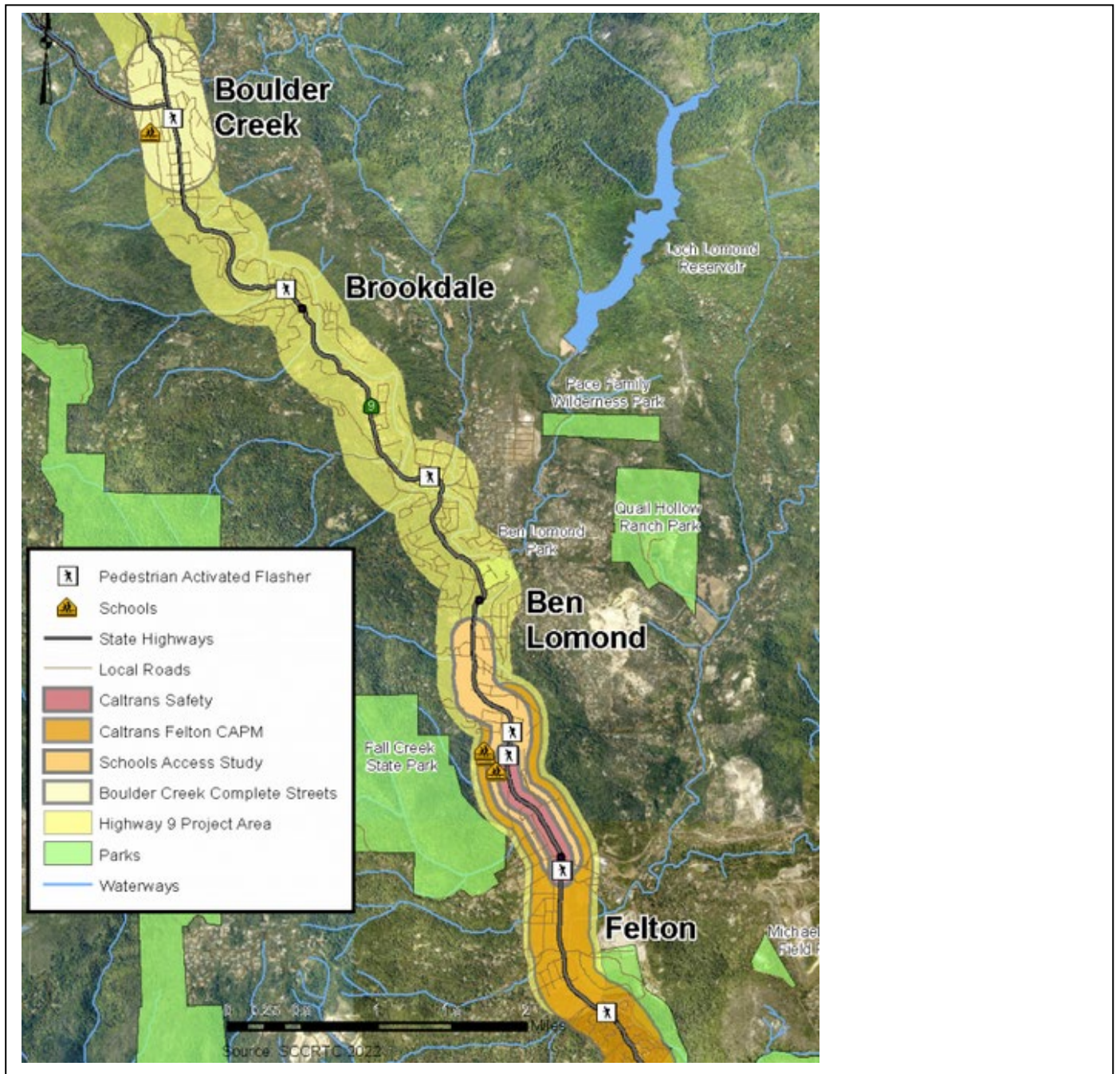
Highlights of Measure D Investments FY23/24*

**See the Expenditure Report for full list of how Measure D was spent this year*

SLV/Hwy 9 Corridor technical assistance, oversight, and community outreach

- Description: Includes legal, engineering review, grant preparation, funding agreements, RTC staff coordination with Caltrans, County, schools, and other stakeholders, public outreach, other planning activities.
- FY23/24 Measure D spent: \$25,953
- Total Project Cost: ongoing

MAP OF MEASURE D PROJECT LOCATIONS



Leveraged Funds

Measure D funds have helped to secure \$25 million in various state and federal source funds for several projects that the SLV/Highway 9 Plan prepared for.

Planned Investments for Carryover Balances and Future Funds

RTC adopted its most recent 5-year program of projects (plan) following a public hearing at its November 2024 meeting. The 5-year plan identifies projects the RTC plans to spend carryover balances and anticipated future Measure D funds on, including:

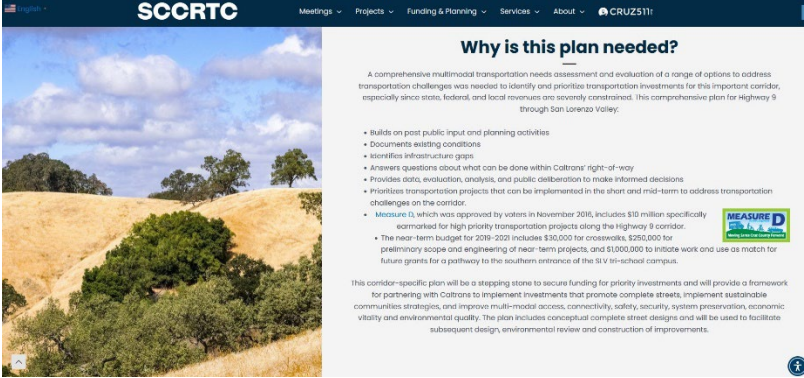
- SLV Schools Complex safety and access improvements – construction
- Boulder Creek Complete Streets project design and construction

Additional information about this project is online at:

- The 5-year plan is online at: www.sccrtc.org/MeasureD
- <https://sccrtc.org/projects/streets-highways/highway-9/>

Measure D Annual Report Cover Sheet - Fiscal Year 2023/24
RTC Category: San Lorenzo Valley/Hwy 9

Measure D Financial Information	
FY23/24 Formula Allocations	\$333,333
Beginning Balance (unspent prior years Measure D Revenues/carryover and Interest)	\$1,718,123
Interest earned in FY23/24 (including interest earned on balances carried over from prior years)	\$69,456
Total Measure D Funding Available in FY23/24	\$2,120,913
Total Measure D Funds Spent in FY23/24	\$25,953
Total Measure D Balance (Rollover to FY23/24)	\$2,094,959
Measure D Compliance Documents – Check with “x” documents included	
1. FY23/24 Annual Report Cover Sheet (<i>this document</i>)	X
2. FY23/24 Audited Financials for Measure D funds (<i>see “Measure D Audit Guidance” for additional information</i>)	One for all RTC categories
3. FY23/24 Expenditure Report Spreadsheet: List of projects that Measure D formula funds (direct allocations) were spent on.	Attached
a. Grouped projects supplemental information	N/A
4. Annual Report Highlights (new for FY23/24)	Attached
5. Map	See Highlights and Fact Sheets
6. Performance Measures Report Spreadsheet	N/A
7. 5-Year Program of Projects (5-Year Plan)	Attached
8. Ongoing Public Outreach for Projects Using Measure D Funds	
a. Description of Public Outreach Process: RTC regularly provided project updates to the public. Fact sheets and other information on the project are available on the RTC and Caltrans websites.	
b. Sample(s) of public outreach on Measure D-funded projects conducted during the reporting year (<i>Attach samples or provide links to outreach. This is not the adoption of your 5-Year Plan</i>) <ul style="list-style-type: none"> • https://sccrtc.org/wp-content/uploads/factsheets/Fact%20Sheet_Boulder%20Creek%20Complete%20Streets.pdf 	
c. Website with Measure D information (<i>per Article III.A.7.</i>)	Web address: https://sccrtc.org/funding-planning/measured/
d. News Article: (<i>Attach a copy of or weblink to at least one news article or press release about Measure D-funded projects in the past fiscal year. News release should inform public that project is funded by Measure D. Per Article III.A.8.</i>)	None (no major work this fiscal year)
e. Signage: (<i>Photos of Measure D logo on signs at construction sites and on public education materials/websites.</i>)	

 <p>SLV/Hwy 9 webpage</p>	
<p>f. Evidence that the 5-year program of projects adopted at the start of FY23/24, and subsequent decisions programming & budgeting Measure D funds, were approved through a public process. (List webpages/links and dates of decisions or attach staff report, resolutions, public hearing notice, committee meetings, etc)</p> <p>i. Public hearings at <u>RTC meetings</u>:</p> <ul style="list-style-type: none"> • <u>11/2/23</u>: FY23/24-27/28 5-year plans <ul style="list-style-type: none"> ○ News Release: https://sccrtc.org/rtc-seeking-input-on-use-of-measure-d-funds-on-regional-highway-trail-rail-and-lift-line-projects/ <p>ii. Advisory Committee Review of draft plans: October 2023</p> <ul style="list-style-type: none"> • Bicycle Committee • Elderly and Disabled Transportation Advisory Committee (E&D TAC) • Interagency Technical Advisory Committee (ITAC) 	
<ul style="list-style-type: none"> • Date of 5-Year Plan Public Hearing soliciting input on 5-Year Plan (per Article III.A.4.) 	Date: 11/2/23
<ul style="list-style-type: none"> • Date annual 5-year Plan approved by Governing Board 	Date: 11/2/23
<p>g. Photos: (Attach before/after and construction photos if available of projects/work done in the reporting year.)</p>	None (no major construction or outreach took place)
<p>h. Fact Sheets on larger projects</p>	Attached
9. Maintenance of Effort N/A	
10. Planned Use of Fund Balances & Potential Liabilities	
<p>a. Fund Balances, Carryover Projects, and Description of planned, longer-term and future uses of Measure D revenues, if known.</p> <p>Building off the community-based Highway 9/San Lorenzo Valley (SLV) Complete Streets Corridor Plan, RTC used Measure D funds in FY2023/24 to scope and identify priority projects for implementation along the corridor through preparation of a Project Initiation Document (PID). The PID was completed in Fall 2022 and Measure D revenues will be used to leverage other funds and initiate future phases of priority projects to get them construction-ready. One high-priority project is improving access to and circulation past the SLV elementary, middle and high schools north of Felton, for all modes of transportation, which result from the 2023 SLV Schools Access Study.</p> <p>b. Future Liabilities: (Describe possible liabilities, including information on how future costs for projects not yet</p>	

completed are anticipated to be funded.)

Since only 1/30th of the \$10 million in Measure D funds designated for this project are allocated each year (approx. \$333k/year over 30 years) and the Complete Streets Corridor Plan identified over \$100 million in priorities, the RTC, County of Santa Cruz and Caltrans will utilize Measure D funds to leverage other funds. This includes opportunities to integrate bike, pedestrian, and safety improvements into Caltrans SHOPP and County of Santa Cruz maintenance, operational and safety projects.

Required Attachments:

- ☐ Measure D Audited Financial Statement
- ☐ Expenditure Report (spreadsheet)
 - ☐ Details for grouped projects, if applicable and not provided above (e.g. location/limits, summary of work done, schedule)
- ☐ Measure D Annual Report Highlights
- ☐ Map(s) of Measure D-funded projects
- ☐ Measure D 5-Year Program of Projects
- ☐ Evidence of public outreach/process for Measure D expenditures (e.g. notices, news releases, board resolutions/staff reports, etc. Links to documents okay.)
 - ☐ News Article or News Release about projects funded by Measure D
 - ☐ Signage photos
- ☐ Photos of project locations (before/after)
- ☐ Fact Sheets for major projects

planning/shared documents/measure d/fy2024expenditurereports/rtc/3c. cover sheet-slv.docx

3.

MEASURE D EXPENDITURE REPORT

Reporting Year

FY23/24

Recipient Agency/Investment Category

SCCRTC- SR9/SLV Corridor

#	Project Name	Project Description/Location		Work Done in FY23/24	FY23/24 Measure D Expenditures	Leveraged Funds, if any		Total Project Cost
		Project Description (may include additional project components, ex. complete streets, traffic calming, crossing improvements, drainage upgrades, etc.)	Location/Limits (if grouped project, list each location/limit)			Leveraged Fund Amounts (grants & other funds where Meas. D used as match)	Leveraged Fund Source(s) Name(s)	
1	Preliminary scope and engineering documents for near term projects	Develop engineers estimates, prelim. designs, initial screening and implementation documents needed to secure funds for priority projects; may include engineering needed to integrate complete streets components into SHOPP and local projects. Includes \$150k to Caltrans for complete streets Project Initiation Document (PID) for the corridor.	SLV Plan Corridor - South of Felton to north of Boulder Creek	Continued work with Caltrans on inclusion of Highway 9 complete streets components in existing projects, incorporation into both existing Caltrans funded and Measure D funded PID documents for potential improvements in the San Lorenzo Valley schools area, Felton, and the rest of the SLV Highway 9 corridor.	\$25,953	\$29.23 M in corridor	Caltrans, HSIP, federal earmark, SHOPP	TBD
1	San Lorenzo Valley (SLV) Safe Routes to Schools -Preconstruction & grant match	SLV Schools Complex Circulation and Access Study and funding designated for potential match of future grant opportunities.	Felton - around tri-schools complex	Initiate work with schools		\$90k	SLVUSD	TBD
2	SLV/SR9 Corridor technical assistance, oversight, and community outreach	Includes legal, engineering review, grant preparation, funding agreements, RTC staff coordination with Caltrans, County, schools, and other stakeholders, public outreach, other other planning activities.	SLV Plan Corridor - South of Felton to north of Boulder Creek	Ongoing coordination and assistance				ongoing
Past/Future Expenditures								
4	Completed: Hwy 9/SLV Corridor Plan	Community-based comprehensive corridor plan, identifying priority transportation projects.						
5	Hwy 9 Pedestrian Crosswalks and Enhancements	Stripe new crosswalks and add RRFBs, ladder striping, etc to several existing crosswalks	Various	NA				
4	San Lorenzo Valley (SLV) Safe Routes to Schools -Preconstruction & grant match	Funding designated for potential match of future grant opportunities.						
6	Completed: Farmer St. Road Repair (alternate ped/bike route to Hwy 9)	Resurfacing Farmer Street, a pedestrian bypass to access SLV Schools Campus						
					\$ 25,953.00			

MEASURE D EXPENDITURE REPORT

#	Project Name	Consistency with 5-year plan		Stats - if applicable				Other
		Project in approved 5-year plan?	If not in 5-year plan or different amount or scope, why different?	New Bike Lane Miles	New Ped Path or Sidewalk Miles	Miles of pavement rehab/repair (pothole, seals, etc)	If Complete Streets not incorporated into project, why not?	Other Notes or Information (optional)
1	Preliminary scope and engineering documents for near term projects	yes						Payment to Caltrans
1	San Lorenzo Valley (SLV) Safe Routes to Schools -Preconstruction & grant match	yes	na					
2	SLV/SR9 Corridor technical assistance, oversight, and community outreach	yes	na					
Past/Future Expenditures								
4	Completed: Hwy 9/SLV Corridor Plan							
5	Hwy 9 Pedestrian Crosswalks and Enhancements							
4	San Lorenzo Valley (SLV) Safe Routes to Schools -Preconstruction & grant match							
6	Completed: Farmer St. Road Repair (alternate ped/bike route to Hwy 9)							

Measure D: 5-Year Program of Projects (FY23/24-FY27/28)

Neighborhood Projects: San Lorenzo Valley (SLV)/Highway 9 Corridor (\$333,333/year; \$10 million over 30 years)

Approved 11/2/23

Previously updated 6/6/19, 11/7/19, 9/3/20, 10/7/21, 3/17/22, 11/3/22

	Name/Road/Limits	Description	Schedule	FY22/23 Estimated Actuals	Prior Years	Planned ¹					Total Measure D	Proposed Updates
						FY23/24	FY24/25	FY25/26	FY26/27	FY27/28		
1	San Lorenzo Valley (SLV) Safe Routes to Schools -Preconstruction & grant match	\$99k for SLV Schools Complex Circulation and Access Study and funding designated for potential match of future grant opportunities.	Schools Access Study 2021-2023.	\$15,897	\$98,990	\$0	\$0	\$0	\$901,010	\$0	\$1,000,000	No change to total. Prior updated to reflect estimated FY22/23 and audited FY21/22 actuals. Shift \$901k to FY26/27 to align with construction year of Caltrans SHOPP project.
2	Preliminary scope and engineering documents for near term projects	Develop engineers estimates, prelim. designs, initial screening and implementation documents needed to secure funds for priority projects; may include engineering needed to integrate complete streets components into SHOPP and local projects. Includes \$180k to Caltrans for complete streets Project Initiation Document (PID) for the corridor.	Ongoing. Complete Streets PID complete 2022.	\$0	\$180,000	\$60,000	\$0	\$0	\$0	\$0	\$240,000	No change to total. Funds not spent in FY22/23 shifted to FY23/24.
3	SLV/SR9 Corridor technical assistance, oversight, and community outreach	Includes legal, engineering review, grant preparation, funding agreements, RTC staff coordination with Caltrans, County, schools, and other stakeholders, public outreach, other planning activities.	Ongoing	\$46,505	\$80,689	\$39,311	\$0	\$0	\$0	\$0	\$120,000	No change to total. Prior updated to reflect estimated FY22/23 and FY21/22 audited actuals. Funds not spent shifted to FY23/24.
4	Boulder Creek Complete Streets	Grant match for complete streets improvements in Boulder Creek, including sidewalks, enhanced crosswalks with curb extensions, pedestrian refuge islands, and other safety and traffic calming features.	Begin pre-construction Summer 2023	\$0	\$0	\$350,000	\$390,000	\$400,000	\$1,260,000	\$0	\$2,400,000	Update title and description consistent with \$1.5M earmark secured. No change to total. (Previously listed as grant match for future projects in the corridor.)
COMPLETED PROJECTS												
5	Hwy 9 Pedestrian Crosswalks and Enhancements	Stripe new crosswalks and add RRBs, ladder striping, etc to several existing crosswalks	Completed Spring 2021		\$25,385	\$0					\$25,385	
6	Hwy 9/SLV Complete Streets Corridor Plan	Community-based comprehensive corridor plan, identifying priority transportation projects.	Completed 6/19		\$35,000						\$35,000	
7	Farmer St. Road Repair (alternate ped/bike route to Hwy 9)	Resurfacing Farmer Street, a pedestrian bypass to access SLV Schools Campus	Completed Fall 2019		\$15,000						\$15,000	
Estimated 5-Year Measure D Expenditures				\$62,402	\$435,064	\$449,311	\$390,000	\$400,000	\$2,161,010	\$0	\$3,835,385	

1- Funds may be shifted between years based on actual expenditures/use rates when sufficient cash capacity exists.

2- Prior Year actuals and carryover to current fiscal year to be adjusted based on audited actuals. Shown here are preliminary estimates.



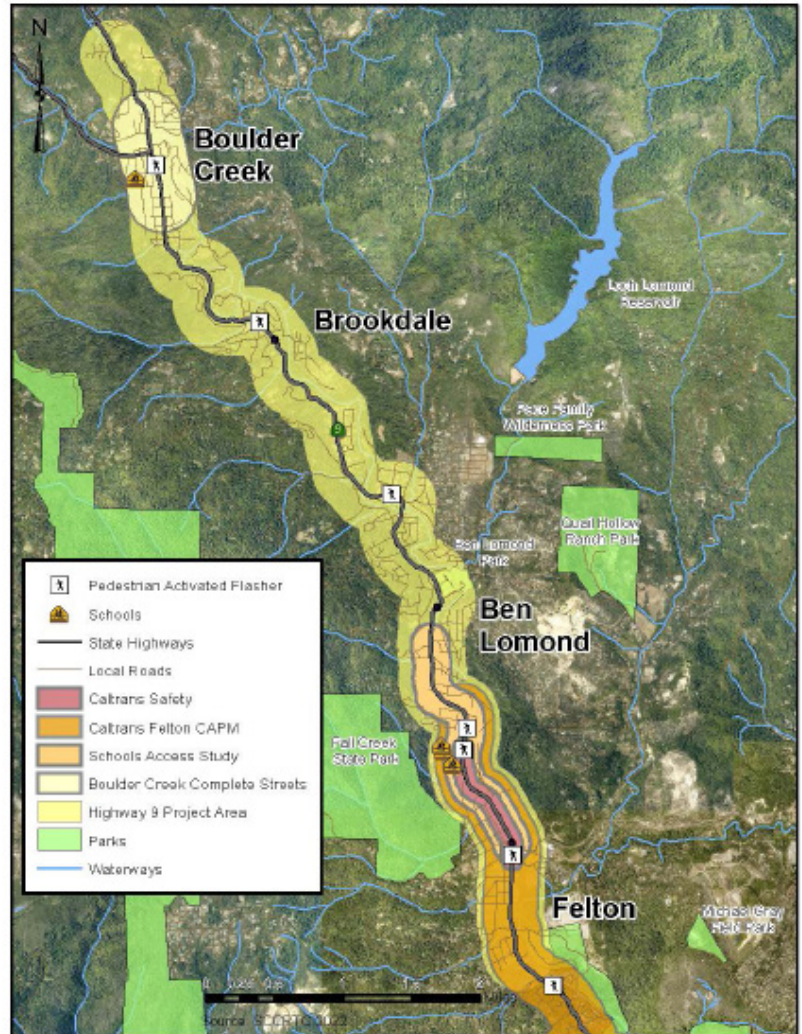
Highway 9 San Lorenzo Valley Complete Streets Program

Project Description

Highway 9 serves as the “Main Street” for the San Lorenzo Valley (SLV) towns of Felton, Ben Lomond, Brookdale, and Boulder Creek, and is an interregional connection to Silicon Valley. It is the backbone for the movement of people and goods through the SLV and is the only direct route linking the four SLV towns.

There are significant transportation concerns throughout the SLV. This mountainous area has high crash rates, narrow, steep, and curving roadways, significant gaps in bicycle and pedestrian facilities, a lack of accessible transit stop access, traffic backups at a number of choke points, as well as pavement, drainage, and other assets in disrepair.

Measure D allocates \$10 million for projects in the Highway 9 corridor that will enhance safety for residents of the SLV. In 2019, the comprehensive Highway 9 San Lorenzo Valley Complete Streets Corridor Plan (SLV Plan) was approved after two years of collaboration with the community. The SLV Plan identifies, evaluates, and prioritizes transportation projects on Highway 9 and connecting county roads through the SLV that can be implemented in the short- and mid-term to address challenges along the corridor. The SLV plan focuses on safety for all road users, particularly pedestrians, bicyclists, and those accessing transit; multi-modal access to schools, businesses, parks, and other key destinations.



Total Programming

Total Funding Secured	\$	62.35M
Funding Sources		
Measure D (Neighborhood)	\$	10M
Other*	\$	52.35M

*Includes HSIP Grant, RTC Consolidated Grants, Caltrans SHOPP and Planning Grants, and RTC match funds (TDA, RTC Reserve Fund, RPA)



Highway 9 San Lorenzo Valley Complete Streets Program

Priority Projects

The SLV Plan identifies over 30 priority projects for the corridor, including the following:

- ▶ Pedestrian and bicycle paths to the SLV schools campus and modifications to improve traffic flow along the schools' entrances
- ▶ Modifications to Felton, Brookdale, Ben Lomond, and Boulder Creek town centers to create safer pedestrian walking and crossing facilities, reduce speeding, and improve access to businesses
- ▶ Pedestrian safety and visibility improvements; and shoulder widening for bicycles

The SLV plan is being used to secure grants, leverage state funds including SHOPP, and facilitate subsequent design, environmental review, and construction of these and other priority projects.

Project Delivery Strategy

The RTC, Caltrans, County of Santa Cruz, SLVUSD, and METRO are working together to deliver the complete streets projects defined by the community in the SLV Plan. Caltrans constructed the crosswalk improvements that were funded by the Measure D-leveraged Highway Safety Improvement Program (HSIP) funds in 2020.

The State Route 9 Complete Streets Project Initiation Document (PID) was funded by Measure D and covers Caltrans required scoping, estimating, and phasing assessments for the remaining projects in the SLV Plan. Completed in 2022, the RTC is now using Measure D funds to leverage state and federal grants to fund construction of additional improvements.

The RTC secured \$1.5 million in federal funding for Boulder Creek Complete Streets Improvements, in 2023 and is beginning preliminary design and environmental review. The RTC also worked with Caltrans and the SLV School District to complete the SLV Schools Access Study in 2023, a preliminary engineering study to improve circulation to and past the elementary, middle, and high schools for all modes of transportation on Highway 9 north of Felton. This study was funded by a combination of Measure D-leveraged grants and funding from the SLV Unified School District.

The RTC is collaborating on Caltrans funded Safety and CAPM repaving projects. Both of these projects are currently in the Project Approval & Environmental Documentation (PA&ED) phase, with construction expected to be complete in 2025 and 2027, respectively. With funding from competitive grants and Measure D, these projects incorporate many more complete streets and other safety improvements for Felton and the SLV Schools area to the north as defined in both the SLV Plan and the SLV Schools Access Study. These improvements include sidewalks, bike lanes, crosswalk safety improvements, center turn lanes, extended turn pockets, and pedestrian refuge islands, as well as other safety elements running from El Solyo Heights Drive in the north (SLV Middle School) to Redwood Drive in the south (Henry Cowell State Park).

