



Measure D Transportation Sales Tax

*Taxpayer Oversight Committee
Annual Report: Fiscal Year 2023/2024*



Executive Summary

In 2016, Santa Cruz County voters overwhelmingly approved **Measure D**, a half-cent sales tax dedicated to improving transportation across the county. This 30-year measure funds five key areas:

- Local streets and roads
- Public transit and paratransit
- Highway improvements
- Rail preservation and studies
- Coastal Rail Trail

Since it took effect in April 2017 through June 2024, Measure D has generated over **\$196 million** for local transportation projects, with **\$27.6 million** collected in the 2023/2024 fiscal year. These funds are being used for dozens of projects—fixing roads, improving safety for cyclists and pedestrians, expanding transit options, and tackling major infrastructure needs.

The **Santa Cruz County Regional Transportation Commission** oversees Measure D and distributes half the funds directly to local cities, the county, Santa Cruz METRO, and Community Bridges' Lift Line. Each agency is required to prepare a five-year spending plan annually, outlining how current and future funds will be used.

Measure D dollars have also helped bring in more than **\$350 million** in outside grants through June 2024, multiplying the impact of local tax dollars and speeding up progress on key regional projects.

Thanks to voter support, Measure D continues to be a reliable and direct source of funding for transportation improvements that reduce traffic congestion, cut greenhouse gas emissions, and make it easier and safer for everyone to get around Santa Cruz County.



MEASURE D TAXPAYER OVERSIGHT COMMITTEE

ANNUAL REPORT

FISCAL YEAR ENDING JUNE 30, 2024

In November 2016, over two-thirds of Santa Cruz County voters approved Measure D, an ordinance with a comprehensive and inclusive package of transportation improvements to be developed in the county that would be funded by the imposition of a retail transactions and use tax of one-half of one percent (0.5%) for a period of 30 years.

The tax became effective on April 1, 2017. The Santa Cruz County Regional Transportation Commission (RTC) is designated as the Local Transportation Authority to implement the provisions of Measure D. Consistent with the Measure D Transportation Improvement Expenditure Plan, the RTC allocates, administers, and oversees the expenditure of all Measure D revenues which are not directly allocated by formula to other agencies.

Through June 2024, over \$196 million in tax revenues were generated and over \$123 million of Measure D funds expended by the RTC and the other recipient local agencies. As shown in the table below, \$57 million of carryover Measure D Funds and anticipated future revenues will be used on transportation projects identified in each agency's 5-year program of projects (5-year plans).

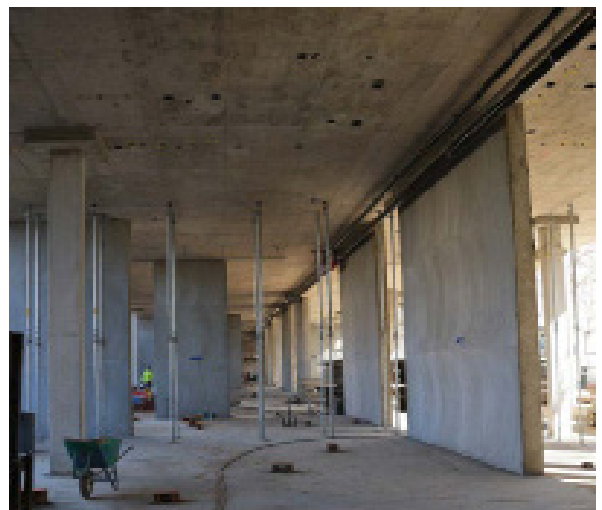
The voter-approved Measure D Ordinance specifies that an independent Taxpayer Oversight Committee (Committee) review the annual independent fiscal audit of the expenditure of Measure D funds and issue an annual report on its findings regarding compliance with the requirements of the Expenditure Plan and Ordinance. The Committee consists of five members who are residents of Santa Cruz County and are neither elected officials of any government nor employees from any agency or organization that oversees or implements projects funded from the proceeds of the tax.

Committee members are appointed for two-year terms. The current Committee Members are:

- Supervisorial District 1: Frederick Harron
- Supervisorial District 2: Mark Johannessen, Chair
- Supervisorial District 3: Philip Hodsdon, Vice-Chair
- Supervisorial District 4: Jeannene Rawlsky
- Supervisorial District 5: Jennifer Merchant



ADA curb ramp construction, City of Capitola



METRO Pacific Station construction

The Committee held in-person meetings on April 17 and June 10, 2025, to review FY 2023/24 expenditures. Meeting materials and minutes are available for review on the RTC website: <https://sccrtc.org/meetings/measure-d-taxpayer-oversight-committee/>.

The Committee reviewed the Measure D Financial Statements, audited by independent Certified Public Accounting firms, and also reviewed the annual expenditure reports submitted by each of the Measure D recipient agencies:

- Santa Cruz County Regional Transportation Commission
- County of Santa Cruz
- City of Capitola
- City of Santa Cruz
- City of Scotts Valley
- City of Watsonville
- Santa Cruz METRO
- Community Bridges's Lift Line

The only material finding of any audit was that the City of Watsonville had not included their Impact Fee Special Revenue Fund in their annual budget. City staff has stated that they have already corrected this for FY 2024/25.

All agencies' expenditures in FY 2023/24 were found to be consistent with the Ordinance and Expenditure Plan. Regarding requirements of the Measure D Ordinance, it was found that the City of Capitola had not updated their Measure D 5-Year Plan. City staff have confirmed that they will resume annual updates to their 5-Year Plan in 2025.

The Measure D Transportation Improvement Expenditure Plan provides for the allocation of investments of Measure D funds for neighborhood projects (30%), highway corridors (25%), transit for seniors and people with disabilities (20%), active transportation (17%) and the rail corridor (8%). For FY 2023/24, the RTC allocated \$26.9 million in net Measure D revenues to cities, the County, Santa Cruz METRO, Community Bridges, and regional investment categories and projects based on formulas set forth in the voter approved Measure D Ordinance and Expenditure Plan. The RTC expended \$19.8 million in the regional categories and the other recipient agencies expended \$18.6 million of Measure D revenues on projects and services in FY 2023/24. This was a significant increase over previous years, as several major projects initiated design and construction work. Any balance of allocations not expended through FY 2023/24 are carried over for use in future years on projects identified in the 5-Year Plans.



*Coastal Rail Trail Segment 5 construction,
North Coast*



METRO CNG Articulated Bus

A summary of Measure D revenues and expenditures from July 1, 2023 through June 30, 2024, and balances follows:

Investment Category	%	FY 23/24 Allocations* (Accrual basis)	FY 23/24 Expenditures	Balances (include prior years carryover & interest)
Neighborhood	30%	\$8,076,107		
SLV/Hwy 9		\$333,333	\$25,953	\$2,094,959
Hwy 17 Wildlife Crossing		\$166,667	\$56,816	\$109,657
City of Capitola		\$361,462	\$366,000	\$562,300
City of Santa Cruz		\$1,717,387	\$1,974,096	\$2,349,914
City of Scotts Valley		\$373,237	\$338,095	\$551,998
City of Watsonville		\$1,184,373	\$1,010,069	\$4,772,078
County of Santa Cruz		\$3,939,648	\$6,294,868	\$6,589,590
Transit/Paratransit - METRO**	16%	\$4,294,955	\$7,148,077	\$5,508,631
Paratransit - Lift Line	4%	\$1,073,739	\$1,469,256	\$772,163
Highway Corridors	25%	\$6,721,948	\$9,000,897	\$20,745,021
Active Transportation/ MBSST	17%	\$4,559,728	\$10,111,979	\$6,600,455
Rail Corridor	8%	\$2,145,594	\$594,490	\$6,448,942
Net Revenues (net fees, admin/ implementation)	100%	\$26,872,071	\$38,390,596	\$57,105,708
Admin. salaries & benefits	1%	\$275,729	\$285,179	
Implementation & Oversight	varies	\$477,278	\$418,040	
Total		\$27,625,078	\$39,093,815	
State CDTFA (BOE) Fees	actuals	\$187,050	\$187,050	

Figure 1: FY 2023/24 Revenue & Expenditures Summary

Notes:

**This table includes a combination of information from the RTC and local agency audited financial information and project expenditure reports. Audited financials are typically presented on a modified or full accrual basis which means revenues are recognized when earned, not when received. FY 2023/24 allocations shown reflect RTC payments on an accrual basis, whereas audits for some agencies showed revenues on a modified accrual or cash basis depending on what month they accrued revenues.*

***METRO: The difference in carryover balance between the audited \$10.5M and the \$5.5M in the expenditure reporting is that the deferred revenue as of 06/30/24 was \$10,519,055, of which \$5,508,631 was Unearned Income and \$5,010,424 was inter fund payable reimbursements for capital expenses incurred in FY24. In other words, only \$5,508,631 was unearned revenue that could be allocated to projects and operations in subsequent fiscal years.*

As shown in the table above, the total Measure D funds collected and allocated (on an accrual basis) for FY 2023/24 by the RTC were \$27,625,078; this is \$261,828, or 0.96%, higher than in FY 2022/23.

Over \$57 million in Measure D revenues were carried over to FY 2024/25. Each agency develops and annually updates 5-year plans that indicate the projects that will be funded with the carryover funding and future anticipated revenues. This information can be found in each agency's most recent plan online at: <https://sccrtc.org/funding-planning/measured>.

Measure D continues to serve as a crucial source of local transportation funding for the Santa Cruz County community and has been leveraged to secure more than \$350 million through June 2024 in outside funding for our transportation system. More details are included in this annual report.

The Measure D Oversight Committee hereby finds that the RTC and Recipient Agencies are proceeding in accordance with the Measure D Ordinance, based on our review of the audited financial statements and the expenditure reports for the period from July 1, 2023, through June 30, 2024.

Mark Johannessen, Chair 2025

Measure D Taxpayer Oversight Committee
Santa Cruz County Regional Transportation Commission



Your Measure D Dollars at Work

In FY 2023/24, recipients used Measure D funds to provide comprehensive and inclusive transportation projects throughout Santa Cruz County. In addition to addressing local street and road maintenance, improving bicycle and pedestrian safety, enhancing transit and paratransit service, designing and initiating construction of major infrastructure projects, and providing traveler information and assistance programs, the funds were used as leverage to secure outside grant funding, to prepare upcoming projects for future construction, to improve sustainability, and to reduce greenhouse gas emissions.

Highlights of Projects Funded by Measure D in FY 2023/24

Each of the agencies that receive Measure D revenues prepare reports and an audit showing how funds were spent. Additional information on expenditures is included in each recipient agency's annual Expenditure Report, available online at: sccrtc.org/funding-planning/measured/taxpayer-oversight/.

Neighborhood Projects: 30% of Measure D Revenues

County of Santa Cruz

- ▶ 2023 Pavement Management Project: 16.81 miles of roadway resurfaced and restriped with bike lane and pedestrian crossing improvements.

Santa Cruz

- ▶ Rail Trail Segment 7, Phase 2: Continued construction of 0.79 mile Rail Trail between Bay/California Street and Pacific Avenue with completion in 2025.
- ▶ Street Smarts Traffic Safety Program: Media and public outreach for the ongoing regional traffic safety campaign.
- ▶ City Arterial & Collector Street Reconstruction and Overlay (Ocean Street Pavement Rehabilitation): Completed rehabilitation of Ocean Street from Felker to Water. Included multimodal improvements for bike, pedestrian, and transit.



Pavement rehabilitation on Hillcrest Drive (before & after), County of Santa Cruz



Ocean Street Pavement Rehabilitation, City of Santa Cruz

Capitola

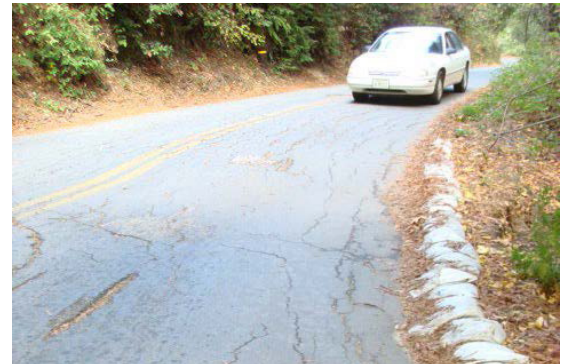
- ▶ 41st Avenue/Capitola Road Rehabilitation Project: Rehabilitation of pavement at the intersection of Capitola Road and 41st Avenue and on Capitola Road from 41st Avenue to 30th Avenue. Vehicular, pedestrian and bicycle lane markings at intersections updated to meet the latest complete streets guidelines. Project included green bike lanes, green bike boxes, improved crossings, 10 new ADA ramps, modified push buttons for better access and leading pedestrian phases added.



Complete streets elements at the intersection of Capitola Road and 41st Avenue, City of Capitola

Scotts Valley

- ▶ Bean Creek Road: Crack seal and type-2 slurry and bike lanes and striping from Scotts Valley Drive to K Street.
- ▶ Granite Creek Road: Repaving of asphalt surface and restriping from Scotts Valley Drive to the intersection at Santos Village Road. Bike lane widening and green treatment, new bike box, and ADA sidewalk improvements.



Pavement rehabilitation on Bean Creek Road (before & after), City of Scotts Valley

Watsonville

- ▶ Freedom Boulevard Reconstruction Project: Road reconstruction, class III bike lanes and a newly installed traffic signal at the intersection of Freedom Boulevard and Sydney Avenue, completed summer 2024.
- ▶ Highway 1 Harkins Slough Road Pedestrian Bridge & Safe Routes to School Project Design: The bi-directional class IV bike lane and pedestrian bridge and 6-mile-long Green Valley Road Class IV bike lane will help provide a safe passage for Pajaro Valley High School students and residents.
- ▶ Citywide Bicycle Programs: Worked with Ecology Action in coordinating Bike Month with several pedestrian and bicycle safety training events and activities held throughout May.
- ▶ Trail Maintenance: Purchased dump truck to assist with ongoing Watsonville bicycle and pedestrian trail maintenance. Maintained existing trails.
- ▶ Pedestrian Traffic Safety: Flashing beacon installation, construction of traffic calming elements, and development of educational traffic safety videos.
- ▶ Pennsylvania Drive Reconstruction Project: Design of pavement repairs and complete street elements.
- ▶ Bridge Street Reconstruction Project: Currently in its design phase.



Pavement rehabilitation on Bean Creek Road (before & after), City of Scotts Valley



Pedestrian traffic safety improvements, City of Watsonville

Transit for Seniors and People with Disabilities:

20% of Measure D Revenues

Lift Line – Community Bridges: 4%

- ▶ Lift Line continued to use Measure D funds to:
 - Expand service hours and provide additional rides
 - Hire additional drivers and staff
 - Support safety and service training for drivers
 - Promote paratransit ride availability
 - Manage facility projects and run operations facility
 - Purchase vehicle/equipment replacements



Lift Line paratransit service



METRO purchased new electric buses and new ParaCruz vans and continued to provide vital paratransit service to the community.



Lift Line facility in Watsonville

METRO: 16%

- ▶ Initiated construction for redevelopment of Pacific Station/METRO Transit Center in Santa Cruz
- ▶ Fixed-route buses equipped with new technology to provide riders with real-time arrival and departure information
- ▶ Purchased four electric buses to be used on the Highway 17 Commuter Route
- ▶ Replaced seven ParaCruz vans
- ▶ Added 10 CNG articulated buses to increase ridership
- ▶ Continued to increase fixed-route service and sustain ParaCruz service



Pacific Station/METRO Transit Center construction

Regional Investment Categories

Active Transportation/Coastal Rail Trail Corridor: 17% of Measure D Revenues



During FY 2023/24, Measure D funds were used on environmental review, permitting, design, coordination, construction of new sections of trail, and maintenance of completed sections of Coastal Rail Trail projects, including:

- ▶ Segment 5 (North Coast): In coordination with the RTC, the Federal Highway Administration Central Federal Lands Highway Division (FHWA-CFLHD) completed design of the 7.5-mile coastal rail trail from Davenport to Wilder Ranch State Park. Construction began of Phases I and II, which include the rail trail and improvements to two parking lots. Design work for Phase III, a new bicycle and pedestrian crossing over Highway 1 at Yellowbank Beach, continued.
- ▶ Segment 8/9 (Pacific Avenue to 17th Avenue): The City of Santa Cruz, in partnership with the County of Santa Cruz, continued preliminary design and

environmental review of Segments 8 & 9 of the Coastal Rail Trail between the Santa Cruz Wharf and 17th Avenue (2.2 miles), also funded by state and private funds. The city has used local and regional Measure D funds as match to secure over \$40 million in grants to fully fund the project.

- ▶ Segment 10/11 (17th Avenue to State Park Drive): The County of Santa Cruz, in partnership with the City of Capitola, continued environmental review and preliminary design of Segments 10 & 11 of the trail from 17th Avenue to State Park Drive (4.5 miles). Measure D has been used as match to secure over \$68 million from California's Active Transportation Program.
- ▶ Segment 12 (State Park Drive to Rio Del Mar Boulevard): The RTC completed environmental review and began the final design of Segment 12 of the Coastal Rail Trail between State Park Drive and Rio Del Mar Boulevard as part of the Highway 1 Freedom-State Park Auxiliary Lanes and Bus-on-Shoulder project, which is being implemented in partnership with Caltrans. This section of trail includes bicycle/pedestrian bridges over Highway 1 and Soquel Drive, connecting coastal neighborhoods and Aptos Village.
- ▶ Coastal Rail Trail Oversight and Coordination: Overall trail planning, legal, stakeholder coordination, and development of future segments/grant applications.
- ▶ Corridor Encroachments and Maintenance: Ongoing corridor maintenance, including vegetation control; tree maintenance; trash and dumping abatement; encampments; drainage maintenance and repairs; and managing, renegotiating, or clearing of unpermitted encroachments.



Coastal Rail Trail Segment 5 construction, North Coast



Goats were utilized to perform vegetation control on the rail line.

Highway 9/SLV Corridor and Highway 17 Wildlife Crossing (Funded from Neighborhood Category)

- ▶ San Lorenzo Valley/Highway 9 Corridor technical assistance, oversight, and community outreach, including legal, engineering review, grant preparation, funding agreements, RTC staff coordination with Caltrans, County, schools, and other stakeholders, public outreach, and other planning activities, including preconstruction for walkways in Felton and Boulder Creek.
- ▶ Landscaping and monitoring of the wildlife undercrossing at Highway 17 near Laurel Road that links core wildlife habitat areas on either side of the highway and to allow animals to travel beneath the highway. Mountain lions, bobcats, deer and other wildlife are using the crossing, reducing car crashes with wildlife.



Wildlife using the Highway 17 Wildlife Undercrossing at Laurel Curve

Highway Corridors: 25% of Measure D Revenues

Highway 1 - Auxiliary Lanes and Bus-on-Shoulder Projects

The RTC leads the development of and has secured grants to construct five (5) new sets of auxiliary lanes, implement a hybrid bus-on-shoulder program, and build new bicycle and pedestrian crossings along 7.5-miles of Highway 1.

- ▶ **Phase 1: Soquel Drive to 41st Avenue** – This project includes one set of auxiliary lanes on Highway 1 between the 41st Avenue and Soquel Drive/Avenue interchanges with bus-on-shoulder improvements and a new bicycle and pedestrian overcrossing at Chanticleer Avenue. Construction was completed in 2025.
- ▶ **Phase 2: Bay/Porter to State Park Drive** – This project includes two sets of auxiliary lanes on Highway 1 between State Park Drive and Rio Del Mar Boulevard interchanges and Rio Del Mar Boulevard and Bay Avenue/Porter Street interchanges with bus-on-shoulder improvements and a new bicycle and pedestrian overcrossing at Mar Vista Drive. The project also includes the replacement of the Capitola Avenue overcrossing, soundwalls, and retaining walls. The project broke ground in April 2024. Construction is ongoing and is anticipated to be complete in 2026.
- ▶ **Phase 3: State Park Drive to Freedom Boulevard including Segment 12 of the Coastal Rail Trail** – This project includes auxiliary lanes and bus-on-shoulder improvements on Highway 1 between Freedom Boulevard and State Park Drive interchanges and the construction of a 1.25-mile-long multiuse trail along the Santa Cruz Branch Rail Corridor, including two new bicycle and pedestrian crossings (segment 12 of the Coastal Rail Trail). The RTC and Caltrans were awarded a \$30 million federal MEGA grant to partially fund construction of the project. The project's final design and right-of-way components are ongoing.



Groundbreaking - Highway 1 Bay/Porter to State Park project, April 2024



Demolition of the Capitola Avenue overcrossing

Cruz511 (Traveler Assistance Programs)

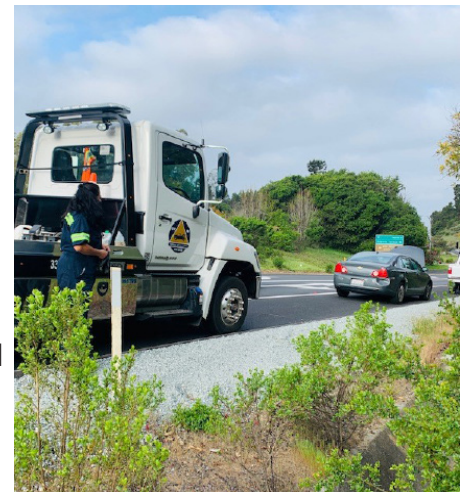
- ▶ The RTC, in partnership with the City of Santa Cruz, UCSC, Ecology Action, and other entities, used Measure D funds to continue to promote “Go Santa Cruz County,” a robust demand management program, including an online commute manager and rewards platform with dynamic carpool ride matching and transit, carpool, and bike trip planning. These services are provided for free and shared with the public via marketing materials, employer toolkits, the program website (www.gosantacruzcounty.org), and social media content. Targeted outreach includes engaging with major employers and providing virtual and in-person commuter workshops to participants.
- ▶ More than 7,200 participants have signed up for Go Santa Cruz County since launching the program in mid-2021, with 1,255 new participants signing up in FY 2023/24. RTC staff attended numerous community events to promote the GO Santa Cruz County Program and sign up new participants. The RTC also continued to provide rideshare, transit, bicycle, active transportation mapping resources, traffic and safety information, and county road and lane closure information to the public, primarily through the www.Cruz511.org website and social media.



RTC staff promoting GO Santa Cruz County at community events

Safe on 17 and Freeway Service Patrol

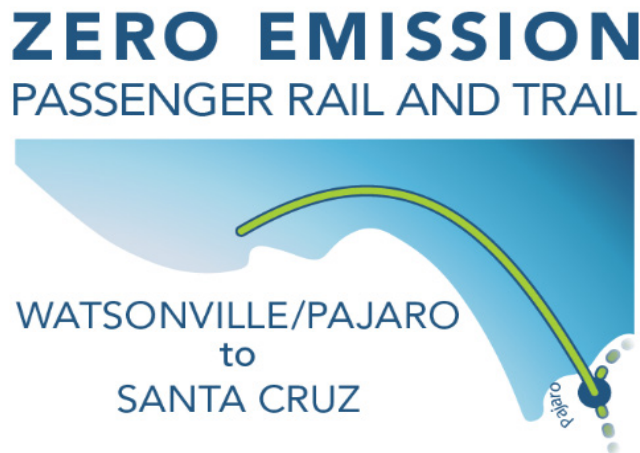
- ▶ Measure D continued to provide critical funding for extra California Highway Patrol (CHP) enforcement on Highway 17 through the Safe on 17 program which aims to reduce collision rates on Highway 17.
- ▶ Measure D funds were used for the Freeway Service Patrol (FSP) to provide tow truck patrols on Highway 1 and Highway 17 during peak travel times, which work in tandem with CHP to reduce incident related congestion, and improve traffic flow and safety by removing debris, assisting motorists with broken down vehicles, and clearing collisions. In FY 2023/24, the FSP tow providers worked a total of 3,640 hours and provided approximately 1,005 assists, with an average of 0.27 assists per hour. The most frequent types of motorist aid provided by FSP included assistance with collisions, mechanical quick fixes, and flat tire repairs.
- ▶ Measure D funds were used for the emergency call box program that connects stranded motorists with roadside assistance through a network of 70 cellular phone service call boxes located along Highways 1, 9, 17, 152, and 129. The call box system includes assistive technologies that can help people with disabilities communicate more easily with the call answering center.



An FSP tow provider assists a broken down vehicle.

Rail Corridor (Rail Infrastructure and Studies): 8% of Measure D Revenues

- ▶ Storm damage repairs, infrastructure preservation, and preventative maintenance for railroad infrastructure
- ▶ Ongoing engineering and construction oversight, administrative review and coordination for utility companies and other entities to perform maintenance or construction on facilities affecting the rail line
- ▶ In fall 2023, the RTC began the Zero Emission Passenger Rail & Trail Project Concept Report which evaluates transit options. The Project Concept Report is scheduled to be completed in late 2025.



Zero Emission Passenger Rail & Trail Project (ZEPRT) Public Workshop, Watsonville

Administrative and Implementation Activities

- ▶ Policies and procedures were followed to safeguard taxpayer dollars and ensure they are expended per voter direction.
- ▶ Accounting and fiscal systems were used to manage each of the accounts and disburse funding to direct recipients per voter approved formulas.
- ▶ Five-year plans were prepared and amended as needed to delineate planned projects using Measure D revenues.
- ▶ Ongoing outreach and community engagement was conducted via website updates (www.sccrtc.org/move), [Facebook](#), [Instagram](#), NextDoor, and eNews.
- ▶ Staff prepared, assembled, and reviewed RTC and recipient agency expenditure reporting documents for the Taxpayer Oversight Committee to review and to create the annual report.
- ▶ The Ordinance requires that all administrative, implementation and oversight costs for the measure be borne by revenues generated by the measure. The Ordinance also restricts the RTC from spending more than 1% of Measure D net revenues on salaries and benefits for administration of the tax measure. The RTC also spends a small amount on general "implementation and oversight," as is reported every year, which refers to spending on the Measure D Strategic Implementation Plan, strategy for potential Measure D financing, and some cash flow modeling and early planning work for projects that are not yet under development.

Leveraging Measure D Funds

One of the benefits of Measure D is the ability to use the funds to bring even more money into the county for transportation projects. Measure D funds have been used to leverage additional grant funds for numerous projects. Without Measure D, many of these grants would not have been available for transportation projects in Santa Cruz County. Most transportation grant programs either require that – or are more likely to be awarded to – applicants commit some amount of local funds; in addition, the largest programs also require that projects already be under development and near shovel-ready. The largest grants secured for regional projects through June 2024 are listed below.

- ▶ Over \$107 million in funding from Highway Infrastructure Program and SB1 Solutions for Congested Corridors for the Highway 1 projects between Soquel Drive and State Park Drive.
- ▶ \$67.6 million in Active Transportation Program (ATP) funding for Segments 10-11 of the Coastal Rail Trail
- ▶ Over \$47 million in funding from the Federal Lands Access Program, Land Trust of Santa Cruz County, and the Coastal Conservancy for the North Coast Rail Trail (Segment 5)
- ▶ \$39 million in ATP funding for Segments 8-9 of the Coastal Rail Trail
- ▶ \$30 million in Federal MEGA funding for the Highway 1 State Park to Freedom and Coastal Rail Trail Segment 12 project
- ▶ Over \$18 million in State Highway Operation and Protection Program (SHOPP) funding for the SLV Schools safety project
- ▶ \$12.7 million in ATP, Coastal Conservancy, Congressional Earmark, and local NGO donation funding for Segment 7 of the Coastal Rail Trail
- ▶ \$8.6 million in SHOPP funding for Highway 9 Felton complete streets improvements
- ▶ \$3.5 million in state Transit & Intercity Rail Capital Improvement funding for the Zero Emission Passenger Rail & Trail project Concept Report
- ▶ \$3 million from the Land Trust and \$4 million in SHOPP funding for the Wildlife Crossing
- ▶ \$1.8 million in LPP-Formula funding distributed to local roadway preservation, transit, and highway projects
- ▶ \$1.5 million in Congressional Earmark from Congresswoman Anna Eshoo for the Boulder Creek Complete Streets project
- ▶ \$1.5 million in STIP funding for the Freedom Boulevard Reconstruction Project



Construction on the Highway 1 auxiliary lane and bus-on-shoulder project between Bay Avenue/Porter Street and State Park Drive

Carryover Balances

Funds that are not expended can be carried over to use in future years on projects identified in Measure D 5-year plans. Some agencies build up several years of funding for construction of larger projects. For example, carryover balances are being used for the construction of projects such as Highway 1 auxiliary/bus-on-shoulder lanes and bicycle/pedestrian overcrossings, the Highway 17 Wildlife Crossing, several segments of the Coastal Rail Trail, METRO capital improvements, and large local road projects that were under development in FY 2023/24 that started or will be starting construction 2024-2027. As large projects go to construction, large carryover balances are starting to decrease. The Measure D ordinance allows for the RTC to secure financing against future revenues. To accelerate delivery of sections of the Coastal Rail Trail and Highway 1 improvements through Aptos in the next few years, the RTC will need to borrow against future Measure D revenues.

Projects To Look Forward To

Measure D recipient agencies are saving up multiple years of Measure D revenues for major work on projects, including:

- ▶ Swanton, Whiting, Murphy, and Trout Gulch roads resurfacing (County)
- ▶ Bay Drive Protected Bike Lane and Protected Pedestrian Path (Santa Cruz)
- ▶ Scotts Valley Drive, Bean Creek Road, Mt Hermon Road, and Lockwood Lane projects (Scotts Valley)
- ▶ Freedom Boulevard Reconstruction project (Watsonville)
- ▶ Facility Paving and EV Infrastructure Project (Lift Line)
- ▶ Hydrogen bus purchases (METRO)
- ▶ Highway 1 Auxiliary Lanes and Bus-on-Shoulder projects between Soquel Drive in Santa Cruz/Live Oak and Freedom Boulevard in Aptos, including new bicycle/pedestrian bridges over Highway 1 (RTC)
- ▶ Coastal Rail Trail project construction between Santa Cruz and Aptos and design in Watsonville
- ▶ Environmental analysis of passenger rail on the Santa Cruz Branch Rail Line



Freedom Boulevard, City of Watsonville



Highway 1 auxiliary lane and bus-on-shoulder construction, Bay/Porter to State Park

The measure D taxpayer oversight committee welcome the public to review all materials made available on the [RTC website](https://www.sccrtc.org). Sign up for the RTC enews list to stay up to date on Measure D projects and for information on opportunities to provide public input on planned Measure D projects: www.sccrtc.org/about/esubscriptions/.