



Santa Cruz County Regional Transportation Commission's
Interagency Technical Advisory Committee (ITAC)

AGENDA
Thursday, April 16, 2026
1:30 p.m.

SCCRTC Conference Room
1101 Pacific Ave, Suite 250A
Santa Cruz, CA

The conference room is located in the middle of the 2nd floor.

Remote Participation

Remote participation for a) members of the public, b) nonvoting committee members/alternates, or c) voting Committee members unable to attend in person due to a disability that prevents them from attending in person; or due to an emergency or for cause per AB2449 (see end of agenda for more information and inform RTC ITAC staff of justification prior to the meeting).

Zoom:

<https://us02web.zoom.us/j/87482198801?pwd=TDNjZDF3aloyenFRRU50QmZpKzBKdz09>

Meeting ID: 874 8219 8801; Passcode: 250250

Alternately participants may dial-in to: 1-669-900-9128

NOTICE/NOTICIA:

- **Servicios De Traducción/ Translation Services:** *Si gusta estar presente o participar y necesita información o servicios de traducción al español, por favor llame por lo menos con tres días laborables de anticipo al (831) 460-3218 o email info@sccrtc.org y dirijase a página 3.*
- *See the end of this agenda for details about access for people with disabilities, translation services and other information.*
- **Agendas Online:** *To receive email notification when the meeting agenda packet is posted on our website, please call (831) 460-3200 or visit <https://sccrtc.org/about/esubscriptions/>*

1. Call to Order
2. Roll Call/Introductions
3. Additions, deletions, or other changes to consent and regular agendas

CONSENT AGENDA

Items appearing on the consent agenda are considered to be minor or non-controversial and will be acted upon in one motion if no member of the Committee or public wishes an item be removed and discussed on the regular agenda. Members of the Committee may raise questions, seek clarification or add directions to Consent Agenda items without removing the item from the Consent Agenda as long as no other committee member objects to the change.

4. Approve Minutes of the March 19, 2026 ITAC meeting
5. Receive Highlights from the April 2, 2026 Regional Transportation Commission Meeting

REGULAR AGENDA

6. Receive demonstration about the Workzone Data Specification (WZDx) User Interface.
 - a. Kapeel Daryani, Mapping Data Services Manager, Nisar Ahmed, Principal, Traveler Information Technology Manager, Metropolitan Transportation Commission (MTC)
7. Receive presentation on the Santa Cruz County Regional Transportation Commission Equity Outreach Toolkit
 - a. Staff Report, Shannon Munz
8. Receive update on Zero Emission Passenger Rail and Trail Project Update
 - a. Staff Report, Riley Gerbrandt
9. Receive update on Rural Highway Safety Plan (RHSP) monitoring
 - a. Staff Report, Brianna Goodman
10. Receive update and discuss the Transportation Data Needs Survey results and subsequent Ad-hoc Data group next steps.
 - a. Staff Report, Marshall Ballard
11. Status of transportation projects, programs, studies and planning documents
 - a. Verbal updates from ITAC members and RTC staff
12. Oral Communications on Matters Not on the Agenda

Members of the public may address the Committee on any item within the jurisdiction of the Committee that is not already on the agenda. At the discretion of the chair, the amount of time for oral communications may be limited. Committee members will not take action or respond immediately to

any Oral Communications presented but may choose to follow up at a later time, either individually, or on a subsequent Committee agenda.

13. Next Meeting and Future Items – The next ITAC meeting is scheduled for 1:30pm **May 21, 2026**. ITAC meetings will be canceled if there are no action items to be brought before the committee.

Future agenda items:

- Safe on 17 Draft Annual Report
- RTC internal data review
- Ad hoc Data Group information

14. Adjourn
-

SERVICIOS DE TRADUCCIÓN/ TRANSLATION SERVICES: *Si gusta estar presente o participar en juntas de la Comisión Regional de Transporte del condado de Santa Cruz y necesita información o servicios de traducción al español por favor llame por lo menos con tres días laborables de anticipo al (831) 460-3200 para hacer los arreglos necesarios. (Spanish language translation is available on an as needed basis. Please make advance arrangements at least three days in advance by calling (831) 460-3200.)*

HOW TO REACH US: *Santa Cruz County Regional Transportation Commission 1101 Pacific Avenue, Ste 250; Santa Cruz, CA 95060; phone: (831) 460-3200 email: info@scrtc.org / website: www.scrtc.org*

AGENDAS ONLINE: *Agendas are posted online (<https://scrtc.org/meetings/inter-agency/agendas/>) at least 72 hours prior to the meeting. Full agenda packets, including handouts and other documents relating to items on the agenda, are also posted online. To receive email notification when the Committee meeting agenda packets are posted on the RTC website, please fill out the e-subscription form on the website: <https://scrtc.org/about/esubscriptions/> or call (831) 460-3200.*

REMOTE PARTICIPATION –Committee Members

This meeting is being held in accordance with the California Ralph M. Brown Act as amended by AB2449 (2022) and AB2302 (2024) and as interpreted by Attorney General Opinion 23-1002. Under any circumstance that a member is participating remotely: The members must be 1) connected in real time through both audio and visual means, and 2) they must publicly disclose before any action is taken whether any other individuals 18 years of age or older are present in the room at the remote location with the member and the general nature of the member's relationship with that individual.

1. *Members of the committee may attend by teleconference if the location from which they are attending is open to the public to participate and the remote meeting location is listed on the agenda under regular Brown Act rules. OR*
2. *Members of the committee may attend via zoom up to two times per year due to an “emergency” or “for cause” according to requirements set forth in Government Code Section 54953, as long as a quorum of the committee is present in person at one meeting location within the county. The remote location from which the member is participating does not need to be listed on the agenda and does not need to be available to the public.*
 - *Government Code Section 54953(j) defines “just cause” as:*
 - *Care of a child, parent, grandparent, grandchild, sibling, spouse, or domestic partner that requires them to participate remotely;*
 - *a contagious illness that prevents a member from attending in person;*
 - *a need related to a physical or mental disability as defined by statute; or*
 - *travel while on official business of the RTC or another state or local agency.*
 - *Government Code Section 54953(j) defines “emergency circumstances” as a physical or family medical emergency that prevents a member from attending in person. The committee member must provide a general description of the circumstances relating to your need to appear remotely at the given meeting (not exceeding 20 words). Medical condition does not need to be disclosed. The ITAC must take action to approve the request to participate due to an emergency circumstance at the start of their regularly scheduled meeting.*
3. *Per Attorney General Opinion 23-1002, members with an Americans with Disabilities Act (ADA) qualifying disability that precludes their in-person attendance may participate remotely as a reasonable accommodation due to their disability.*

REMOTE PARTICIPATION - Public

The public may participate in the meetings of the Regional Transportation Commission (RTC) and its committees in person or remotely via the provided Zoom link. If technical difficulties result in the loss of communication for remote participants, the RTC will work to restore the communication; however, the meeting will continue while efforts are being made to restore communication to the remote participants. Members of the public participating by Zoom are instructed to be on mute during the proceedings and to speak only when public comment is allowed, after requesting and receiving recognition from the Chair.

PARTICIPACIÓN REMOTA – El público

El público puede participar en las juntas de la Commission Regional de Transporte (RTC) en persona o remotamente a través del enlace Zoom proporcionado. Si problemas técnicos resultan en la pérdida de comunicación con quienes participan remotamente, la RTC hará lo posible por restaurar la comunicación. Pero, la junta continuara mientras se hace lo posible por restaurar la comunicación con quienes participan remotamente. A los miembros del público que participan por Zoom se les indica que permanezcan en silencio durante los procedimientos y que hablen solo cuando se permitan comentarios públicos, después de solicitar y recibir el reconocimiento del presidente.

Zoom Meeting Tips: *Meeting attendees are strongly encouraged to use the Zoom app for best reception. Prior to the meeting, participants can download the Zoom app at: <https://zoom.us/download>. A link to simplified instruction for the use of the Zoom app is: <https://blog.zoom.us/video-communications-best-practice-guide/>*

ACCESSIBILITY/ACCOMMODATIONS FOR PEOPLE WITH DISABILITIES:

The Santa Cruz County Regional Transportation Commission does not discriminate on the basis of disability and no person shall, by reason of a disability, be denied the benefits of its services, programs, or activities. This meeting location is an accessible facility. If you wish to attend this meeting and require special assistance in order to participate, please contact RTC staff at 460-3200 (CRS 800/735-2929) at least three working days in advance of this meeting to make arrangements. People with disabilities may request a copy of the agenda in an alternative format. As a courtesy to those persons affected, please attend the meeting smoke and scent-free.

TITLE VI NOTICE: *The RTC operates its programs and services without regard to race, color and national origin in accordance with Title VI of the Civil Rights Act. Any person believing to have been aggrieved by the RTC under Title VI may file a complaint with RTC by contacting the RTC at (831) 460-3212 or 1101 Pacific Avenue, Ste 250, Santa Cruz, CA 95060 or online at <https://scrtc.org/about/title-vi-civil-rights-program/>. A complaint may also be filed directly with the Federal Transit Administration to the Office of Civil Rights, Attention: Title VI Program Coordinator, East Building, 5th Floor-TCR, 1200 New Jersey Ave., SE, Washington, DC 20590.*



Santa Cruz County Regional Transportation Commission's
Interagency Technical Advisory Committee (ITAC)

MINUTES

Thursday, March 19, 2026, 1:30 p.m.

In Person: RTC Conference Room, 1101 Pacific Ave, Ste 250A, Santa Cruz

Alternate Location: Caltrans District 5, Planning, San Luis Obispo

Online: Zoom

ITAC Members Present:

Association of Monterey Bay Area Governments	Regina Valentine
California Department of Transportation	Paul Guirguis
County Public Works	Steve Wiesner
Santa Cruz Metropolitan Transit District (METRO)	John Urgo
Santa Cruz Metropolitan Transit District (METRO)	Derek Toups
Santa Cruz Planning Proxy	Claire Gallogly
Watsonville Public Works	Miguel Lizzaraga
Watsonville Community Development	Justin Meek
University of California Santa Cruz (UCSC)	Oxo Slayer

RTC Staff Present: Marshall Ballard, Jason Thompson, Jaeden Gales, Joel LaCagnina, Max Friedman, Jacob Klein

Others Present – In person: Jeff Wuton (Santa Cruz METRO) Georgina Arias (UCSC)

Non-Voting Members online (not AB2449 or Brown Act):

Fernanda Dias-Pini (County Planning), Casey Carlson (County Public Works)

Others Online:

AMBAG – Will Condon, Heather Adamson,
Members of Public – Michael Paisano, Jim Helmer

1. **Call to Order:** Vice Chair Urgo called the meeting to order at 1:36 p.m.
2. **Introductions** were made.
3. **Additions, deletions, or other changes to consent and regular agendas:**

CONSENT AGENDA

ITAC members unanimously approved a motion (Gallogly/Meek) *approving the consent agenda with members Valentine, Guirguis, Wiesner, Toups, Urgo, Gallogly, Lizzaraga, Meek, Slayer voting “aye”*.

4. **Approve Minutes of the February 19, 2026 ITAC meeting**
5. **Receive Highlights from the February 2026 Regional Transportation Commission Meeting**

REGULAR AGENDA

6. **Receive information about Metropolitan Transportation Improvement Program for FFY 2027 to FFY 2030**

AMBAG Planner, Will Condon presented the Metropolitan Transportation Improvement Program (MTIP) for FFY 2026-27 to FFY 2029-30. Will explained what the MTIP is and why it is a requirement of Metropolitan Planning Organizations. He described the process of updating the MTIP, how the plan relates to other transportation plans, the types of transportation projects included, and presented the schedule.

7. **Receive updated information about the Work Zone Data Specification**

RTC Staff members Jason Thompson and Marshall Ballard presented information from the meeting between RTC and Metropolitan Transportation Commission (MTC) staff. Jason described the questions and answers document included with the staff report and discussed key takeaways from the meeting. Marshall noted the benefits and limitations of coordinating with navigation applications such as Google and Waze and described how existing GIS systems can use the WZDx feed. Marshall mentioned utility companies and contractors are not currently using MTC's system but noted there is an option to include them.

Steve Wiesner asked for clarification on the approval required for MTC to include Santa Cruz County in their system. Derek Toups explained the challenges associated with MTC adding jurisdictions outside their areas and recommended contacting San Diego County. Miguel Lizzaraga suggested RTC request a demo from MTC.

8. **Receive information and discuss about the Santa Cruz County Regional Transportation Commission Data Science Program**

RTC Planner, Marshall Ballard presented the RTC's Data Science Program. He discussed the RTC's goal to update the processes for managing regional transportation data. He noted the existing data the RTC manages and discussed the potential to enhance data sharing throughout the county. He highlighted potential Big Data resources and announced he will set up workshops with Streetlight and Miovision. Marshall also announced he will be sending out a survey to determine data needs from each agency.

Steve Wiesner mentioned other products that could be considered and suggested the RTC lead the data effort for the entire county. Steve made a motion to form an ad hoc committee focused on data needs and discussed the idea of all agencies contributing to a new data program. Heather Adamson clarified that Marshall's presentation is specific to Santa Cruz county's regional travel demand model. Claire Gallogly asked if the Big Data effort should be a countywide effort or a regional effort. Heather Adamson announced AMBAG submitted a Caltrans planning grant for Big Data, noted some liability challenges with using Big Data, and recommended including AMBAG's staff in the Ad Hoc data committee.

ITAC members unanimously approved a motion (Wiesner/Gallogly) to form an Ad Hoc committee to address data needs with members Valentine, Guirguis, Wiesner, Toups, Urgo, Gallogly, Lizzaraga, Meek, Slayer voting "aye".

9. **Grants, Funding and other notices updates**

RTC Planner Max Friedman presented a summary of upcoming grant opportunities highlighting the Affordable Housing and Sustainable Communities (AHSC) grant which is due May 4, 2026 and the Safe Streets and Roads for All (SS4A) grant which is due in Spring 2026. Max noted the RTC is planning to apply for the SS4A grant for the Boulder Creek Complete Streets project. Max corrected the schedule for the Environmental Enhancement and Mitigation Program (EEM) grant which will be available in 2027 instead of 2026 and announced the RTC submitted an application for the Zero Emission Passenger Rail & Trail Project (ZEPRT) environmental component to the Community Project Funding and noted the window is now closed. Max also announced the Active Transportation Plan (ATP) grant opens either March 19, 2026 or March 20, 2026 and the deadline is anticipated to be June 22, 2026.

Derek Toups noted the Transit Development Act (TDA) is not included in the summary and asked for clarification on RTC's budget for the TDA grant.

Claire Gallogly announced the city of Santa Cruz will apply for the ATP cycle 8 for a city-wide sidewalk project and the Soquel corridor redesign. Claire also announced the city of Santa Cruz will apply for the SS4A grant for the city's Safety Action Plan, a city-wide lighting assessment, and speed reduction measures. Georgina Arias announced UCSC will be applying for ATP cycle 8 for a non-infrastructure bicycle education program. Miguel Lizzaraga announced the city of Watsonville will be submitting two applications for the ATP grant, the Main Street road diet and bike and pedestrian infrastructure on Beach Street and Rodriguez Street. Steve Wiesner announced the county of Santa Cruz will apply for the AHSC grant, the ATP grant, the SS4A grant, and asked about Caltrans Highway Safety Improvement Program (HSIP) cycle 13 schedule, noting the county will apply for this grant as well. John Urgo announced METRO will apply for the AHSC grant and Derek Toups announced METRO will apply for the Transit and Intercity Rail Capital Program (TIRCP) grant. Marshall Ballard announced the RTC will apply for the ATP grant for ebike and bike education and the SS4A grant for the Boulder Creek Complete Streets project. Marshall also announced the RTC recently submitted a cyber security grant. Derek Toups announced METRO is on the eligibility list for a transit security grant.

10. **Solicitation of interested parties to serve as Chair and Vice Chair of ITAC for the new term**

Claire Gallogly nominated Matt Starky to serve as chair and Justin Meek to serve as vice chair. **ITAC members unanimously approved a motion (Gallogly/Wiesner) to elect Matt Starky as Chair and Justin Meek as Vice Chair with members Valentine, Guirguis, Wiesner, Toups, Urgo, Gallogly, Lizzaraga, Meek, Slayer voting "aye".**

11. **Status of transportation projects, programs, studies and planning documents**

METRO: John Urgo announced a designer was procured for the Rapid Corridor project. Steve Wiesner commented on the importance of public outreach and several ITAC members discussed outreach strategies.

UCSC: Oxo Slayer announced an EV charging study, increased EV charging on campus, the installation of level 3 chargers for the UCSC fleet, upcoming housing projects, the widening of Coolidge Drive, and noted UCSC is halfway through a campus wide circulation of the master plan. Georgina Arias announced UCSC will be acquiring a new EV bus on March 23, 2026 with a second bus coming a few weeks later. Georgina also noted some issues with charging infrastructure.

Watsonville: Miguel Lizzaraga announced the Highway 1 Bridge on Harkin

Slough Road bids are closing the week of March 27, 2026, the Lee Road phase 1 will start in April 2026, the design for the Clifford Drive Traffic Calming project will be completed in April 2026 and the project is anticipated to start in summer 2026. Miguel also announced the Freedom Boulevard improvements and the Pennsylvania Drive trail are in design and anticipated to start construction in 2027. Miguel asked for a transit design standards document for bus stops and John Urgo noted METRO is applying for a Caltrans planning grant to update their standards document. Justin Meek announced a study session on Vision 0 and Complete Streets on March 24, 2026.

County: Steve Wiesner announced Soquel Drive phase 2 is in negotiation for project management services and anticipates awarding the contract in late April or early May 2026. Design is anticipated to start in summer 2026. Steve also announced the Safety Action Plan and the Local Resident Street Safety Plan is anticipated to go to the board before the end of the fiscal year. Steve provided updates on a federal bridge replacement project for the San Lorenzo Way Bridge which will go out to bid in summer 2026.

Santa Cruz: Claire Gallogly announced the Murray Street bridge is open in one direction, the Active Transportation Plan is scheduled to go to the city's board in April 2026 followed by the Safety Action Plan, the Bay/Porter project is at 60% design, and the city will continue coordination on several upcoming construction projects.

AMBAG: Regina Valentine announced public outreach for the Pajaro bridge study will begin in spring 2026 and the draft existing conditions report is under review. Regina also announced the MTP/SCS, and associated EIR are being finalized based off public comments and are anticipated to be adopted and certified in June 2026.

Caltrans: Paul Guirguis announced two temporary signals for person traffic will be installed on Highway 9 north of Boulder Creek and one temporary signal south of Boulder Creek in April or May 2026. Oxo Slayer asked if any upcoming transportation plans include a sidewalk between Ben Lomond and Felton.

RTC: Marshall Ballard announced the Rural Highway Safety plan and North Coast TDM plan are almost complete.

12. Oral Communications on Matters Not on the Agenda

Jim Helmer commented about the need for a bicycle and pedestrian advisory committee along with a transit and accessibility committee in Santa Cruz County. His point of clarification was that the Bicycle Advisory Committee

(BAC) only serves for bicyclists and would better serve the County by including Pedestrians. He also noted the E&DTAC although does advise on pedestrian and transit need doesn't seem like its function from its name or guidance information.

13. **Next Meeting and Future Items:**

The next ITAC meeting is scheduled for 1:30pm **April 16, 2026**. ITAC meetings will be canceled if there are no action items to be brought before the committee. Future agenda items:

14. Adjourn – 3:01 p.m.

Minutes respectfully submitted by Jason Thomson, Transportation Planning Tech

C:\Users\jthompson\Desktop\ITAC\February 2026\ITAC-Minutes_Feb2026.docx



*Santa Cruz County Regional Transportation Commission
1101 Pacific Avenue, Suite 250, Santa Cruz, CA 95060
phone: (831) 460-3200
email: info@sccrtc.org; website: www.sccrtc.org*

CONTACT: Shannon Munz, Communications Specialist (smunz@sccrtc.org)

Santa Cruz County Regional Transportation Commission (RTC) April 2, 2026 Meeting Highlights

Elderly and Disabled Transportation Advisory Committee (E&D TAC) Member Appointments

The Commission approved two new appointments to the Elderly and Disabled Transportation Advisory Committee. New committee member Kendra Webster was appointed to represent Social Services Seniors (County) and new committee member Bobi Wood was appointed to represent Santa Cruz METRO.

Highway 1 State Park Drive to Bay Avenue/Porter Street Auxiliary Lanes, Bus on Shoulder, and Mar Vista Bicycle and Pedestrian Overcrossing Project – Amendment to Construction Cooperative Agreement with Caltrans to Increase Construction Support Funding

The RTC is currently constructing the Highway 1 auxiliary lanes and bus-on-shoulder project between the Bay Avenue/Porter Street and State Park Drive interchanges, which includes the bicycle and pedestrian overcrossing at Mar Vista Avenue and the new Capitola Avenue overcrossing, in partnership with Caltrans. The RTC is the project sponsor responsible for funding construction capital and construction support costs and Caltrans is the implementing agency for construction, responsible for administering the construction contract and associated construction support activities. Since construction began, the Project has progressed substantially but has encountered numerous challenges that have increased construction capital and construction support costs. The project has experienced unforeseen challenges that have resulted in additional construction support costs. Caltrans estimates the total projected construction support funding shortfall to be about \$6.7 million to complete construction of the project early next year. RTC staff reviewed the information provided by Caltrans, met with Caltrans construction and project management teams several times, verified submitted information, and found the request to be substantiated given the documented increases in staffing demands, consultant usage, change orders, and extended project duration. The Commission approved an amendment to the cooperative agreement with Caltrans to cover the cost overruns using Measure D-Highway Corridor funds.

Approval of a Separation Agreement and Mutual Release with the current Rail Operator for the Santa Cruz Branch Rail Line and for an Administration, Coordination, and License Agreement with a new Rail Operator over a portion of the SCBRL

The Commission approved a Separation Agreement and Mutual Release to effectively and amicably terminate the Administration, Coordination, and License (ACL) Agreement with St. Paul & Pacific Railroad (SPPR), a subsidiary to Progressive, Rail, Inc. Per the Separation Agreement, SPPR will transition rail operations, including assignment of relevant agreements, provide all track and inspection records, and file appropriate documents with the Surface Transportation Board. This decision marks a necessary step in the development of transportation solutions along the RTC-owned branch line, including the Coastal Rail Trail in the near-term and passenger rail in the long-term. This action also preserves the existing freight and recreational rail uses along the branch line.

The RTC is fully committed to continuing freight service for the existing freight customers in Watsonville. The Commission approved a new ACL Agreement with Chicago Rock Island & Pacific Rail to serve as the common carrier for the Watsonville Branch Line, between Pajaro/Watsonville Junction and Lee Road, to continue and expand freight service. This action will ensure uninterrupted freight service to the existing three customers who ship and receive goods by rail. Rock Island Rail is a privately owned railroad headquartered in Biloxi, Mississippi with diverse operations across the United States and experience with enhancing degraded rail and track infrastructure for improved operations.

Fiscal Year (FY) 2026-27 Proposed Budget

At the beginning of each calendar year, staff prepares a proposed RTC and Measure D budget for the following fiscal year. The FY2026-27 budget proposed for the RTC and Measure D reflects the most recent revenue projections from the Santa Cruz County Auditor for Transportation Development Act (TDA) revenues, State Controller's Office of California for State Transit Assistance (STA) and State of Good Repair (SGR) revenues, and Hinderliter de Llamas (HdL) for Measure D revenues. The FY2026-27 budget includes continued delivery of Highway 1, Coastal Rail Trail, traveler assistance, regional planning, and other ongoing RTC projects and programs, and the implementation of Measure D. The Commission approved the proposed FY2026-27 budget and work program, and accepted Transportation Development Act and Measure D revenue forecasts and estimates.

Upcoming RTC and Committee Meetings

[Regional Transportation Commission](#)

Thursday, May 7, 2026, 9:00 a.m.

[Safe on 17 Taskforce](#)

Wednesday, April 8, 2026, 1:30 p.m.

[Bicycle Advisory Committee](#)

Monday, April 13, 2026, 5:30 p.m.

[Elderly & Disabled Transportation Advisory Committee](#)

Tuesday, April 14, 2026, 1:30 p.m.

Interagency Technical Advisory Committee

Thursday, April 16, 2026, 1:30 p.m.

RTC and committee meetings are held in person. Non-voting members of the Commission and its committees, as well as members of the public and staff, will have the option to participate in person or remotely, provided equipment is available at the meeting location to allow remote participation. If there are technical difficulties during a meeting that prevent remote participation, the meeting will continue. Please check the RTC website [<https://sccrtc.org/meetings/calendar/>] or call 460-3200 to confirm meeting and video conference information for future meetings. Agendas are posted to the website at least 3 days before the meeting and will also include attendance information. Meetings may be canceled if there are no action items to be considered by the committee.

The RTC is committed to its compliance with the Americans with Disabilities Act (ADA). Please contact the RTC at least 3 days in advance of a meeting if special accommodations are needed. If any document, webpage, meeting, or recording is inaccessible to you, kindly notify us at info@sccrtc.org or by calling 831-460-3200.

Public input on transportation issues is welcomed and encouraged. For more information, visit the SCCRTC website at www.sccrtc.org or call 460-3200. Some Regional Transportation Commission meetings are televised countywide by Community TV of Santa Cruz. Consult www.communitytv.org or call 831-425-8848 for schedule and station information.

AGENDA: April 16, 2026

TO: Regional Transportation Commission

FROM: Shannon Munz, Communications Specialist

RE: Santa Cruz County Transportation Equity Action Plan: Equitable Outreach and Engagement Toolkit

RECOMMENDATIONS

Staff recommends that the Committee receive an update and demonstration on the Santa Cruz County Transportation Equity Action Plan's Equitable Outreach and Engagement Toolkit

BACKGROUND

The Santa Cruz County Regional Transportation Commission (RTC) received a federal Sustainable Transportation Planning grant from Caltrans to develop a Transportation Equity Action Plan for Santa Cruz County. The Plan was adopted by the RTC in December 2025. A key component of the Plan is an Equitable Outreach and Engagement Toolkit with practical tips, strategies and best practices to guide the RTC and partners in equitable and inclusive outreach.

DISCUSSION

As part of the Santa Cruz County Transportation Equity Action Plan, RTC staff developed an Equitable Outreach and Engagement Toolkit to support more inclusive, effective, and community-centered engagement practices across the agency's work.

The development of this toolkit reflects a key finding of the Equity Action Plan: while transportation investments can expand opportunity and improve quality of life, they do not benefit all communities equally without intentional and inclusive engagement. Historically underrepresented and underserved communities—identified in the Plan as Equity Priority Communities—often face barriers to participating in traditional outreach processes. These barriers can include language access, time constraints, lack of trust in public agencies, and limited awareness of opportunities to engage. The toolkit is designed to address these challenges by providing staff and partners with practical strategies to remove barriers and ensure that a broader range of

community voices are meaningfully reflected in transportation planning and decision-making.

As identified in the Equity Action Plan, the toolkit is a core implementation resource intended to operationalize equity across RTC programs and projects. It is envisioned as a living resource that can evolve over time as staff gain experience, community relationships deepen, and best practices continue to advance.

The toolkit is designed to be practical, adaptable, and scalable for use across a wide range of projects—from early planning and visioning efforts to project delivery and evaluation. Staff can use the toolkit to:

- Identify and understand the communities most impacted by a project or policy
- Set clear, equity-centered outreach goals and objectives
- Select appropriate engagement methods tailored to specific community needs
- Develop culturally and linguistically appropriate materials
- Track participation and evaluate the effectiveness of outreach efforts
- Incorporate community feedback into decision-making processes

The toolkit can be used as a step-by-step guide for comprehensive outreach planning or as a reference resource to support specific elements of engagement.

Toolkit Overview

The toolkit is organized into several chapters that guide users through the outreach and engagement process:

- **Introduction and Equity Framework**
Provides an overview of the agency's commitment to equitable engagement, defines key terms, and explains why equity-centered outreach is essential to achieving better transportation outcomes.
- **Chapter 1: Setting Goals and Objectives**
Guides staff in developing clear, measurable, and equity-focused outreach goals. This includes aligning engagement efforts with project objectives and community needs, and establishing criteria for success.
- **Chapter 2: Equitable Outreach and Engagement Best Practices**
Provides strategies for designing your outreach approach and selecting appropriate engagement methods, including both traditional and non-traditional approaches, collaboration strategies and partnerships, language access, culturally relevant messaging, and reducing participation barriers.
- **Chapter 3: Measuring Impact and Success**
Focuses on evaluating outreach effectiveness, tracking participation, and incorporating feedback into future efforts. This chapter reinforces the importance of accountability and ongoing learning.

- **Chapter 4: Resources**

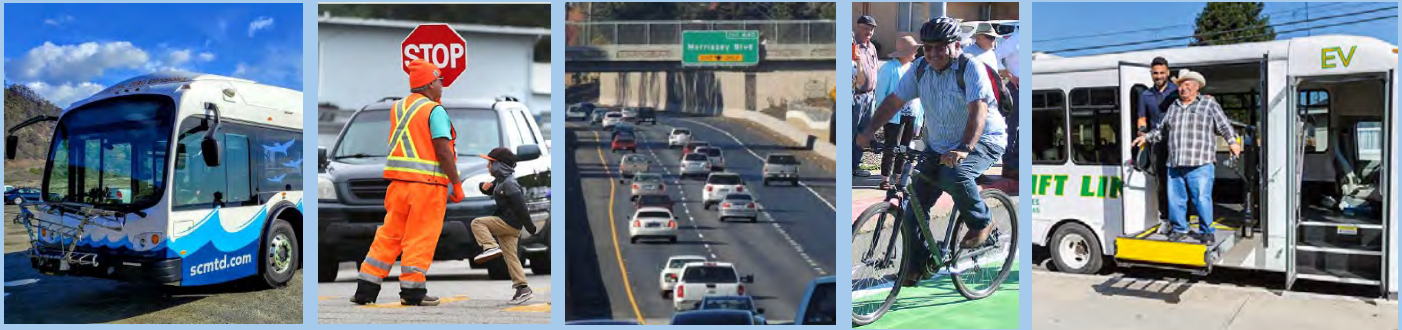
Includes tools, templates, checklists and reference materials to support outreach activities that staff and partners can adapt for their specific projects.

SUMMARY

The Equitable Outreach and Engagement Toolkit is a foundational component of the Transportation Equity Action Plan and represents a significant step toward embedding equity into the planning and project delivery processes. It is envisioned as a living resource that can evolve over time as staff gain experience, community relationships deepen, and best practices continue to advance. By equipping RTC staff and partners with practical tools and guidance, the toolkit supports more inclusive decision-making, improves project outcomes, and build trust with the communities we serve.

Attachments

1. Equitable Outreach and Engagement Toolkit



Santa Cruz County Equitable Outreach and Engagement Toolkit

Adopted December 4, 2025



SCCRTC Santa Cruz County Regional Transportation Commission

www.sccrtc.org

1101 Pacific Ave, Suite 250

Santa Cruz, California, 95060

831-460-3200 info@sccrtc.org

Table of Contents

Introduction	1
Using the Toolkit	2
Chapter 1 – Setting Goals and Objectives	3
Chapter 2 – Equitable Outreach and Engagement Best Practices	4
Chapter 3 – Measuring Impact and Success	9
Chapter 4 – Resources	11
• Project Outreach Plan (Template)	12
• Equitable Outreach Planning Checklist	15
• Post Outreach Evaluation	16
• Equity-Focused Community Based Organizations	20
• Community Events List	22
• Holiday Calendar	24
• Meeting Facilities List	42
• Digital Engagement Tools, Guides and Best Practices	45

Appendix A: Equitable Outreach and Engagement Toolkit

When we find solutions that work for those most vulnerable in our communities, we find solutions that work better for everyone.

Introduction

Advancing Equitable Public Engagement

The Santa Cruz County Regional Transportation Commission (RTC) is committed to incorporating meaningful public engagement strategies into all of its planning and project development processes to ensure our decision making is well informed. It is vital that the people we serve have a voice in shaping the transportation projects and programs that affect their daily lives. Meaningful public engagement leads to better decisions, more responsive projects, and stronger public trust. It is how we remain accountable, transparent, and aligned with the real needs of our communities.

Meaningful public engagement must also be equitable. Not all community members have had equal opportunities to participate in the decisions that shape their neighborhoods, especially those in low-income, underserved, or non-English-speaking communities. These community members offer unique perspectives on the needs of their communities, and they have vast knowledge of the community's strengths and weaknesses. However, too often these essential voices go unheard due to longstanding barriers in access, trust, and communication. This often leads to projects that fail to address their specific needs and sometimes exacerbate existing inequities. Investing in meaningful and inclusive engagement fosters a more equitable and thriving future for all residents.

Rooted in our agency's mission to *develop and deliver transportation solutions for a vibrant, sustainable, and equitable community*, the RTC has developed this Equitable Outreach and Engagement Toolkit to ensure the community engagement strategies we design and carry out are equitable, inclusive, and responsive, and are guided by our Principles of Public Participation.

Guiding Principles for Public Participation:

1. **Welcome everyone.** Use ways of reaching out that make all people feel included, especially communities that have had fewer chances or resources in the past.
2. **Value people's voices.** Everyone's ideas matter and support different people with different life experiences to be involved.
3. **Give many chances to share.** Offer different ways for people to share ideas, give feedback, ask questions, and review plans.
4. **Be fair and respectful.** Listen carefully to all comments and concerns.

5. **Work together.** Support open conversations and teamwork between residents, business owners, groups, and government staffs.
6. **Include underserved equity priority communities.** Make sure people and groups who are often less involved are invited and supported.
7. **Invite participation at every step.** Encourage the public to be involved from the beginning to the end of the project.
8. **Share clear and timely information.** Provide easy-to-understand updates and reports to the community on a regular basis.

Using the Toolkit

This comprehensive resource includes practical tips, strategies and best practices that can be used to effectively reach and empower those historically excluded from civic processes. With a focus on equitable outreach, inclusive communication, and meaningful engagement, this toolkit aims to foster stronger connections and collaboration with the diverse communities we serve.

Developed with adaptability in mind, this toolkit can be used by other public agencies and community partners seeking to strengthen their equitable and inclusive outreach efforts. Whether you're planning a single project or building a long-term engagement framework, this toolkit is intended to serve as a roadmap for:

- **Promoting equity** by ensuring all voices—especially those from disadvantaged communities—are heard, respected, and reflected in government decisions.
- **Increasing participation** by removing barriers and providing multiple culturally-relevant ways for people to engage.
- **Improving project outcomes** by designing solutions grounded in the real needs and experiences of diverse community members.
- **Building trust and collaboration** through consistent, transparent, and meaningful dialogue with the public.

We invite you to use it not just as a checklist—but as a commitment to listen more deeply, engage more intentionally, and build lasting relationships to ensure that every resident has the opportunity to shape the decisions that affect their lives.

Chapter 1 - Setting Goals and Objectives

Establishing clear goals and measurable objectives is essential to developing a successful and equitable community engagement plan. Goals will help define the purpose of your outreach, while objectives will provide a roadmap for how success will be measured. When grounded in equity, these goals ensure that engagement efforts prioritize inclusivity, amplify underrepresented voices, and lead to more just and community-informed outcomes.

Define Specific Outreach Goals

Start by defining why you are engaging the community and what your desired end goals are. Goals should reflect both the purpose of the project and the agency's commitment to equity.

Examples of equity-centered outreach goals:

- Increase visibility and presence in underrepresented areas by hosting more outreach events in priority neighborhoods identified by income, race/ethnicity, or access to services.
- Increase meeting attendance of residents from low-income or non-English-speaking communities.
- Work with more community-based organizations in low-income and underserved neighborhoods to co-develop outreach strategies and partner on dissemination of information.
- Build long-term trust with historically excluded communities through transparent, responsive engagement.

Establish Measurable Objectives

Create objectives that are actionable and trackable. This can help ensure your objectives are realistic and clear.

Examples of objectives:

- Host at least three community meetings in underserved neighborhoods within the next six months.
- Table at six community events or pop-up locations during the outreach period.
- Attend and participate in meetings of at least 3-5 existing community-based organizations serving underrepresented communities to share project information and build trust.
- Distribute bilingual project flyers to at least 500 households in targeted areas by the end of the outreach period.
- Increase survey response rates among Spanish-speaking residents by 25% compared to the previous outreach effort.

A checklist that staff and partners can use when developing engagement goals and objectives to ensure they are intentional, actionable, and equity focused is included in Chapter 4-Resources.

Chapter 2 – Equitable Outreach and Engagement Best Practices

Building a truly inclusive and engaged community requires reaching all residents, regardless of background, income level, or ability. This means moving beyond traditional outreach methods and embracing an equitable outreach strategy to ensure every resident has a voice. These best practices will guide your equitable engagement efforts while fostering a more inclusive and engaged community.

A. Developing Outreach Strategies

Tailor Outreach Methods to Target Audiences

Community members from underserved or marginalized communities may not all have access to digital platforms or may rely on other forms of communication (e.g., flyers, radio, word of mouth). Use various methods to reach them effectively.

- **Traditional Media:**
 - Utilize local newspapers (print/online), TV and radio (including multilingual options) for PSAs and targeted ads.
- **Digital Outreach:**
 - Utilize social media platforms relevant to target audiences with clear, concise messages.
 - Send email newsletters with translated content.
 - Maintain a user-friendly, accessible and multilingual website with up-to-date information.
 - Utilize bilingual online surveys and interactive project resources
- **Printed Materials:**
 - Develop brochures, fact sheets, flyers, and posters with clear visuals and translated versions and distribute them in community centers, libraries, local businesses, etc.
- **Community Events and Partnerships:**
 - Participate in local festivals and events to engage residents in familiar settings.
 - Collaborate with community-based organizations on outreach and engagement efforts.

A list of local events and CBOs are included in Chapter 4. These lists will be shared with community-based organizations and regularly updated.

Utilize Culturally Appropriate Messaging and Language

- Understand and respect the diverse cultures within your community. Be mindful of cultural norms and communications styles and tailor outreach materials to resonate with specific communities and that respects cultural norms and values.
- Build relationships with culturally diverse community leaders and organizations. Leverage their expertise to develop culturally appropriate outreach strategies and materials.

- Provide materials and interpretation in the primary languages spoken in the community.

Provide Multiple Avenues for Engagement

- **Meetings:** Host in-person meetings, workshops, town halls at accessible locations and times convenient for working families. Ensure engagement events are not held on any religious or cultural holidays or observances.
- **Surveys:** Offer both online and paper surveys in multiple languages. Make staff available to assist community members in completing the surveys if they need help, especially if tabling or at an outreach event.
- **Community Forums:** Organize community forums, focus groups and listening sessions in diverse neighborhoods.
- **Door-to-Door Outreach:** Utilize trusted community members for in-person outreach.
- **Meet People Where They Are:** Rather than expecting community members to come to a central office or public meeting, hold events in community centers, parks, places of worship, or schools in the communities you are trying to engage with.

B. Partner with Community Organizations and Community Leaders

Developing strong partnerships with community leaders and community-based organizations increases equitable outcomes, public participation, and can foster trust between the community and public agencies. [These partners hold invaluable knowledge about the community's needs and dynamics, and their partnership can be key to successful engagement.](#)

Identifying Key Stakeholders

- **Community Leaders:** Look beyond elected officials. Consider clergy, educators, cultural leaders, and respected elders who hold influence within specific communities.
- **Community-Based Organizations (CBOs):** These non-profit organizations often work directly with low-income and disadvantaged residents, providing vital services and advocating for their needs. Partner with CBOs that align with your project's focus (e.g., housing, education, healthcare).
- **Local Businesses:** Many businesses, especially those with a long history in the community, have established relationships with residents. Partner with them and the local Chamber of Commerce to reach a wider audience and leverage their communication channels.
- **Religious Institutions:** Places of worship often serve as community hubs and trusted spaces for residents. Partner with them to host outreach events or disseminate information.
- **Community Groups:** Look for resident-led groups focused on specific issues or neighborhoods. These groups can provide valuable insights and help connect you directly with hard-to-reach populations.

Building Relationships

- **Proactive Engagement:** Enlist the assistance early on of trusted CBOs and leaders who are deeply connected to residents to identify community needs and priorities. Their insight

ensures outreach is rooted in the community's lived experience and trust is built from the start.

- **Mutual Respect:** Acknowledge the expertise and experience of community partners. Treat them as collaborators, not simply conduits for information dissemination.
- **Transparency and Open Communication:** Be clear about project goals, potential impacts, and timelines. Attend CBOs meetings regularly to share updates, actively listen, and solicit feedback.
- **Demonstrate Commitment and Appreciation:** Maintain long-term relationships and collaboration. Follow up after projects and keep communication open year-round.

Collaboration Strategies

- **Joint Planning and Development:** Involve community partners in planning meetings and workshops to ensure projects address their priorities.
- **Culturally Appropriate Outreach:** Work with CBOs and community leaders to develop culturally sensitive outreach materials and communication strategies.
- **Utilize Existing Networks:** Leverage CBOs' and community leaders' connections to disseminate information through trusted channels, such as community newsletters or social media groups. Ask small businesses and faith-based organizations if you can post flyers or distribute surveys at these sites, especially in high-traffic areas like corner stores or community churches.
- **Joint Events:** Partner with CBOs and local businesses to host community events and pop-up engagement tables to provide information about a project and to offer a platform for open dialogue.

C. Ensure Accessibility and Inclusivity

Outreach strategies should address known barriers to participation, ensuring that all community members are able to participate fully and meaningfully in the public process.

Addressing Language Barriers with Translation Services

- Ensure language barriers do not impede participation. Offer translated versions of website content, meeting materials and key documents and other materials—flyers, surveys, signage—in the primary languages spoken in the community.
- Hire bilingual staff or interpreters for meetings and events.
- Cultural context matters. Adapt messages so they resonate with the values and priorities of the communities you are engaging with.
- Have translated materials reviewed by native speakers familiar with local dialects and terminology.

Providing Accommodations for Individuals with Disabilities

- Ensure all information and communication materials are accessible to individuals with disabilities (physical, sensory, cognitive, etc.). This includes providing documents in alternative formats (e.g., Braille, large print, audio, video), and using accessible fonts, alt text for images, and clear and concise language.

- Consider accessibility of physical locations for meetings and events. Choose venues near public transportation and with ramps, elevators, accessible restrooms, assistive listening devices, and seating for individuals using mobility aids.
- Offer American Sign Language interpreters and real-time captioning services for public meetings (in-person or virtual).

Offering Assistance and Incentives for Events

- Provide supervised childcare or children’s activities at meetings and events so parents can participate meaningfully.
- Offer stipends or gift cards if applicable to incentivize public participation.
- Offer bus passes, shuttle services, parking vouchers, or gas cards to reduce barriers to in-person engagement.
- Provide light refreshments or meals at meetings and events that occur during mealtimes so that community members can participate without missing a meal.
- Provide options that make attending or participating in meetings easier for community members. For in-person meetings, hold meetings both during the day and in the evening to accommodate a wide range of schedules and availability in the community. Also consider incorporating a concurrent virtual option for in-person events and meetings.

D. Leverage Virtual Engagement Tools

Selecting Appropriate Digital Platforms

- **Assess Community Access and Preferences:** Before selecting digital tools, evaluate the community’s access to technology and preferred communication channels. This ensures that chosen platforms are accessible and user-friendly for all participants.
- **Utilize Diverse Engagement Tools:** Incorporate a mix of platforms to cater to various engagement needs:
 - **Survey Tools:** Platforms like SurveyMonkey, ArcGIS Hub and MetroQuest facilitate the collection of community feedback on transportation projects.
 - **Interactive Mapping:** Tools such as Community Remarks allow residents to provide location-specific input, enhancing spatial understanding of community concerns.
 - **Virtual Meeting Platforms:** Utilize Zoom or GoToMeeting for hosting virtual town halls and workshops, ensuring features like breakout rooms and live polling are available to encourage participation.
- **Ensure Mobile Compatibility:** Given that many residents may access digital content via smartphones, ensure all platforms and materials are mobile-friendly.

Facilitating Inclusive Virtual Meetings

- **Provide Multilingual Support:** Offer real-time interpretation services during virtual meetings to accommodate non-English speaking participants.
- **Implement Accessibility Features:** Ensure platforms support closed captioning and are compatible with screen readers to assist participants with disabilities.

- **Engage Participants Actively:** Incorporate interactive elements such as polls, Q&A sessions, and breakout discussions to maintain engagement and gather diverse perspectives.
- **Offer Technical Assistance:** Provide tutorials or helplines to assist participants unfamiliar with virtual platforms, ensuring equitable access to engagement opportunities.

Equitable Outreach Plan Template and Equitable Outreach Planning Checklist

Use the outreach plan template and planning checklist in the resources chapter when developing your outreach plan to ensure your outreach and engagement efforts are intentional, actionable, and equity focused.

Chapter 3 – Measuring Impact and Success

Measuring the success of community engagement efforts is essential—not only to evaluate what worked and what didn't, but to ensure accountability, promote continuous learning, and demonstrate your agency's commitment to equity. Tracking impact helps build trust with community members, partners, and stakeholders by showing that feedback is taken seriously and results are used to inform decisions. An intentional approach to evaluation allows agencies to refine their strategies over time and improve future outreach—especially for underserved and marginalized communities.

A. Establish What Success Looks Like

Before measuring outcomes, define what success means for your specific engagement effort. Consider:

- Did the engagement reach the intended audiences?
- Were barriers to participation meaningfully addressed?
- Did feedback collected influence decisions or lead to visible action?
- Did participants feel heard, respected, and valued?

Align your success criteria with your goals and objectives (see Chapter 1), and make sure they reflect both quantitative outcomes and qualitative experiences.

B. Use Both Quantitative and Qualitative Metrics

Quantitative Metrics:

These are numeric indicators that help track reach and scope.

- Number of attendees at meetings or events
- Number and demographics of survey respondents
- Website or social media engagement rates
- Volume of materials distributed in multiple languages
- Participation rates by neighborhood, language group, or age group

Qualitative Metrics:

These help assess quality, relevance, and trust.

- Participant feedback and satisfaction levels
- Themes or concerns raised in open-ended responses
- Observations from staff or community partners
- Testimonials or quotes from community members
- Degree to which community input shaped project decisions

C. Disaggregate and Analyze Data Through an Equity Lens

To evaluate whether your engagement was inclusive and equitable:

- Break down data by race/ethnicity, income, zip code, language, age, and disability status when possible.
- Compare turnout or participation levels to your community's demographic profile.
- Ask: Who did we hear from—and who did we miss?

This kind of analysis helps identify gaps, understand the impact on different groups, and inform improvements for future outreach.

D. Collect and Analyze Feedback

- **Offer Multiple Feedback Tools:** Use comment cards, follow-up surveys, QR codes linking to feedback forms, and brief “exit interviews” after events.
- **Ensure Anonymity and Safety:** Particularly for marginalized residents, provide anonymous options to encourage honest input without fear of retaliation.
- **Debrief Internally:** After each event or outreach effort, hold a reflection session with staff and partners to discuss what worked, what didn't, and what could improve.

E. Share Outcomes Transparently

Reporting back to the community closes the loop and shows that their input mattered. Best practices include:

- Sharing summary reports in plain language and in multiple languages
- Creating visual summaries (e.g., infographics, videos, maps)
- Posting updates on your website and social media
- Sending thank-you messages and outcome summaries to participants
- Clearly showing how community input influenced decisions or project design

Chapter 4 – Resources

Resources include:

- Equitable Outreach Plan Template
- Equitable Outreach Planning Checklist
- Post Outreach Survey
- Community Events List
- Holiday Calendar
- Meeting Facilities List
- Digital Engagement Tools, Guides and Best Practices
- Media List (RTC mailing lists)
- Stakeholder List (RTC mailing lists)

Project Outreach Plan (Template)

1) Project Overview

Project Name:

Project Description/Purpose:

Project Timeline:

Project Lead/Staff Contact(s):

2) Target Audiences

Primary audiences:

Secondary audiences:

Priority Groups (check all that apply):

Low-income communities

Spanish-speaking communities

Other non-English speakers

People with disabilities

Youth

Seniors/older adults

Rural/geographically isolated residents

Other:

Neighborhoods/census tracts of focus:

3) Outreach Goals & Objectives

What are your equity-centered outreach goals?

1)

2)

3)

What measurable objectives will you track?

1)

2)

3)

4) Barriers to Participation

Potential Barriers (check all that apply):

- | | |
|--|--|
| <input type="checkbox"/> Language | <input type="checkbox"/> Disability access |
| <input type="checkbox"/> Transportation | <input type="checkbox"/> Digital access |
| <input type="checkbox"/> Childcare | <input type="checkbox"/> Lack of trust / historical inequities |
| <input type="checkbox"/> Meeting time / location | <input type="checkbox"/> Other: |

Strategies to reduce barriers:

5) Outreach Strategy: What methods will you utilize to effectively reach your target audience?

Traditional Media _____

Digital Outreach _____

In-Person Outreach _____

Community Partnerships _____

Other Strategies: _____

6) Key Messages & Language Access

Key messages: _____

Languages to be offered: _____

Interpreter(s) needed? Yes/No

Written translation needed? Yes/No

7) Accessibility & Accommodations (check those that are needed)

- ADA accessible venue
- ASL interpreter
- Captioning (virtual)
- Large-print materials
- Childcare
- Transportation assistance
- Refreshments
- Virtual participation option

8) Schedule & Outreach Touchpoints (List all meetings, events, etc. taking place)

Method | Date(s) | Location / Channel | Notes

9) Partners (Are there any partners you are working with or could potentially work with?)

Organizations / Leaders:

10) Metrics for Success (Identify the metrics you will use)

Quantitative Metrics:

- Total participants engaged
- Number of events held
- Surveys collected
- Languages offered
- Participation by target audience(s)
- Other:

Qualitative Metrics:

11) Plan for Reporting Back

How will feedback be summarized and shared?

Timeline to report back:

Equitable Outreach Planning Checklist

Project Readiness

- Project purpose is clearly defined
- Timeline is set
- Staff roles established

Target Audience

- Primary affected audiences identified
- Underserved / priority groups defined
- Geographic focus identified

Goals & Objectives

- Goals reflect equity + engagement purpose

Barriers & Solutions

- Barriers to participation identified
- Mitigation strategies defined

Outreach Strategies

- Methods align with audience needs
- Mix of in-person + digital
- Community partners engaged
- Meeting people where they are

Cultural & Language Access

- Materials translated
- Interpreters scheduled
- Culturally relevant messaging prepared

Accessibility

- Venue ADA accessible
- ASL / captions planned
- Transportation / childcare available

Communications

- Clear messages drafted
- Plain language used
- Multilingual formats planned

Reporting Back

- Reporting method identified
- Timeline to report back set
- Thank-you + follow-up planned

Post Outreach Evaluation

Instructions: Please complete this survey to help us identify gaps in outreach/additional focus areas that will help us develop best practices in future outreach activities

Goal: Proactively engage the community in an ongoing conversation to address their transportation needs while providing courteous, factual, reliable, timely, and helpful information

What were your intended outcomes or engagement goals? _____

Summarize your outreach activities: _____

Quantitative Outcomes

- Total participants engaged:
- Number of events held:
- Surveys collected:
- Languages offered:
- Participation by target audience(s):
- Other:

Qualitative Outcomes

- What feedback did participants provide? _____
- What common themes or concerns were raised? _____
- Did community input influence the outcome or direction of the project? _____
- Other: _____

Equity Analysis

Have we disaggregated our data by race, income, language, and location?

Are there groups we intended to reach but did not? Why?

Did we reduce barriers for participation, and were those efforts effective?

Community Feedback

Did we ask participants how they felt about the engagement process?

Do we have feedback that reflects both satisfaction and areas for improvement?

Sharing Results

Have we summarized and shared the outcomes in accessible, community-friendly formats?

Have we shown how community feedback influenced the final outcome?

Have we thanked participants and invited them to stay involved?

CHECKLIST

Prove 1-2 sentences describing how categories were addressed. What worked what didn't.

Checklist	Category	How Category Was Addressed
	1. Engaging with underrepresented groups (demographics, language accessibility)	
	2. Media (social, traditional, video, etc.)	
	3. Community partnerships (stakeholders)	
	4. Accessibility (geographical, disability, etc.)	
	5. Community Feedback	

Location (Physical/Remote)	Staff Present	Action Items	Community Feedback

How did this activity promote equity?

Was collaborative dialogue achieved?

Did any feedback stand out to you?

Were there any ways this event could be improved/what would you do differently in the future?

Equity-Focused Community Based Organizations

A partial list of Community Based Organizations working with equity priority communities that have partnered with RTC to share information about and engage with community members on transportation projects and programs include:

- Area Agency on Aging Advisory Council
- Bike Santa Cruz County
- Community Bridges
- County Health Services and Community Traffic Safety Coalition
- Diversity Center
- Dominican Hospital Foundation Wellness Center and Life on Wheels
- Ecology Action
- Elderly and Disabled Transportation Advisory Commission (E&D TAC)
- Meals on Wheels - Community Bridges
- Pajaro Valley Arts Council
- Regeneración
- Santa Cruz County Human Services Department - Adult and Long-Term Care
- Santa Cruz County Seniors Commission
- Santa Cruz Metro Advisory Committee (MAC)
- Senior Council of Santa Cruz County
- Shared Adventures
- Volunteer Center
- Watsonville Vision Zero
- Watsonville Wetlands Watch

Groups RTC should meet with in the future include:

- Aging and Disabilities Services Providers Advocacy Group
- Cakes for Care for Seniors
- California Association for Adult Day Services Board of Directors
- Churches
- Schools – youth organizations, principals, teachers
 - PVHS Environmental Committee
- Elderday Adult Day Health Care
- Grey Bears
- Homeless Garden Project
- Housing Advisory Commission
- IHSS Advisory Commission
- Master Plan for Aging Steering Committee
- Mid-County Senior Center
- Mid-County Democratic Club Board of Directors
- Retired Public Employees Association Board of Directors

- San Lorenzo Valley Highlands Senior Center
- SEIU 2015 Caregiver Union
- Seniors Council
- Valley Women's Club
- Watsonville City's Senior Advisory Board
- Watsonville Senior Center

Community Events List

Event	Timing	Location		Contact
Business Fair - Santa Cruz	March	Santa Cruz		
Earth Day - Santa Cruz	April	Santa Cruz		
Earth Day - Watsonville	April	Watsonville	Downtown City Plaza, Watsonville	
Earth Day - Cabrillo College Aptos Campus	April	Aptos	Cabrillo College Aptos Campus	
Earth Day - Cabrillo College Watsonville Campus	April	Watsonville	Cabrillo College Watsonville Campus	
Business Fair - Pajaro	April	Watsonville		
Cinco de Mayo Watsonville	May	Watsonville		
Bike to Work Day - Spring	May	Santa Cruz		
Midtown Fridays	All summer	Santa Cruz	1111 Soquel Avenue, Santa Cruz	
Santa Cruz Juneteenth	June	Santa Cruz	London Nelson Community Center	
Food Truck Fridays Capitola	Multiple dates May - August	Capitola	Monterey Avenue Park, Capitola	Contact Capitola Community Services
Twilight Concert Series Capitola	Wednesdays June - August	Capitola	Esplanade Park Bandstand, Capitola	Contact kbarreto@ci.capitola.ca.us
Music in the Plaza Watsonville	Every 1st & 3rd Friday in summer starting June 20	Watsonville	Downtown City Plaza, Watsonville	Contact Watsonville Parks & Community Services
Capitola Makers Market	Multiple dates June - August	Capitola	Esplanade Park & Capitola Wharf	Apply at cityofcapitola.org
Spirit of Watsonville 4th of July Parade	4th of July	Watsonville	Main Street, Watsonville	Apply via City of Watsonville website
National Night Out Capitola	August	Capitola	Jade Street Park, Capitola	Contact Capitola Police Dept.
Watsonville Strawberry Festival	August	Watsonville	Downtown Watsonville	Contact festival organizers or apply via city website
Movies at the Beach Capitola	August	Capitola	Esplanade Park Bandstand, Capitola	Contact Capitola Recreation Dept.
National Night Out Watsonville	First Tuesday in August	Watsonville	Pinto Lake County Park	Maria Rodriguez Maria.Rodriguez-Castillo@santacruzcountyca.gov
Watsonville Back to School Barbeque and Resource Fair	August	Watsonville	Marinovich Park Community Center, 120 Second Street	
Comunidad en Movimiento - Semillas de Bienestar, Watsonville	August	Watsonville	Pinto Lake County Park	Kymerly Lacrosse kymberly@growing-greatness.com
Street Smarts Back to School	August	Santa Cruz		
Strawberry Festival Watsonville	August	Watsonville		
County Fair	September	Watsonville	County Fairgrounds	
Downtown Santa Cruz Greek Festival	September	Santa Cruz		
Capitola Art & Wine Festival	September	Capitola		
Capitola Beach Festival	September	Capitola		
Second Harvest Wellness Fair	September	Watsonville		





Week Without Driving	September	Capitola	Capitola Mall Parking Lot	
Open Streets Santa Cruz	October	Santa Cruz		
Bike to Work Day - Fall	October	Santa Cruz		
Senior Resource Fair	October	Watsonville		
WATs UP! Block Party	October	Watsonville	Watsonville High School	
Touch a Truck	October	Capitola	Capitola Mall Parking Lot	
Downtown Santa Cruz Harvest Festival	October	Santa Cruz		
Open Streets/Calles Libres Watsonville	November	Watsonville	Downtown City Plaza, Watsonville	Kymerly Lacrosse kymberly@growing-greatness.com

Ongoing				
Farmers Markets - SC, Live Oak, Cabrillo, Watsonville, Scotts Valley				
Downtown Santa Cruz Farmers' Market	Every Wednesday	Santa Cruz	700-798 Cedar St, Santa Cruz, CA	https://santacruzfarmersmarket.org/contact/
Live Oak Farmers Market	Every Sunday	Santa Cruz	15th St & East Cliff Dr, Santa Cruz, CA	https://santacruzfarmersmarket.org/contact/
Westside Santa Cruz Farmers Market	Every Saturday	Santa Cruz	Mission St. Extension & Western Drive, Santa Cruz, CA	https://santacruzfarmersmarket.org/contact/
Aptos Farmers Market at Cabrillo College	Every Saturday	Aptos	6500 Soquel Drive, Aptos, CA	info@montereybayfarmers.com
Watsonville Flea Market	Sundays 9am-4pm	Watsonville		Contact Patricia Rodriguez to reserve space 831-235-1855
Downtown Santa Cruz Makers Market	Third Sundays	Santa Cruz		
Pajaro Chamber Lunch in the Park				
Farmers Markets - SC, Live Oak, Cabrillo, Watsonville, Scotts Valley				
Downtown Santa Cruz Farmers' Market*	Every Wednesday	Santa Cruz	700-798 Cedar St, Santa Cruz, CA	https://santacruzfarmersmarket.org/contact/
Live Oak Farmers Market*	Every Sunday	Santa Cruz	15th St & East Cliff Dr, Santa Cruz, CA	https://santacruzfarmersmarket.org/contact/
Westside Santa Cruz Farmers Market*	Every Saturday	Santa Cruz	Mission St. Extension & Western Drive, Santa Cruz, CA	https://santacruzfarmersmarket.org/contact/
Aptos Farmers Market at Cabrillo College*	Every Saturday	Aptos	6500 Soquel Drive, Aptos, CA	info@montereybayfarmers.com
Watsonville Flea Market	Sundays 9am-4pm	Watsonville		Contact Patricia Rodriguez to reserve space 831-235-1855
Downtown Santa Cruz Makers Market	Third Sundays	Santa Cruz		
Pajaro Chamber Lunch in the Park				
Chamber Mixers				

*Farmers Markets are first-come, first-served basis (no sales allowed)

Holiday Calendar

(2026, to be updated annually)

	Green Triangle – Diversity Leaders' Birthdays
	Blue Circle – United States Holidays
	Red Bar – Religious / Cultural Holidays
	Purple Star- International Holidays

Source: California Department of Corrections and Rehabilitation

<https://www.cdcr.ca.gov/gare/cdcr-cchcs-gare-diversity-and-inclusion-calendar/>

January 2026

Month-Long Observance

Mental Wellness Month/ Poverty Awareness Month/ National Mentoring Month/ Slavery and Human Trafficking Prevention Month

Sunday	Monday	Tuesday	Wednesday	Thursday	Friday	Saturday
				1 ● New Year's Day	2	3 — Mahayana New Year (Buddhist)
4 ★ World Braille Day	5 — Guru Gobind Singh (Sikh)	6 — Feast of Epiphany (Christian) — Day of the Holy Kings	7 — Orthodox Christmas Day	8	9 — Swami Vivekananda Jayanti (Hindu) ● Law Enforcement Appreciation Day	10
11 ▲ Birthday of Alice Paul (Women's Rights Pioneer) ● National Human Trafficking Awareness Day	12 ● National Pharmacist Day	13 — Lohri (Sikh) ● Korean American Day	14 — Makar Sankranti (Hindu festival to Sun God, Surya) — Orthodox New Year	15 — Bodhi Day (Buddhist)	16 ● National Religious Day — Guru Har Rai Birthday (Sikh)	17 ★ International Mentoring Day
18 — Rohini Vrat (Jain) ★ World Religion Day	19 ● Martin Luther King Jr. Day	20 — Guru Gobind Singh Ji Jayanti (Sikh) ● National Day of Racial Healing	21 ★ World Religious Day	22	23 ★ International Integrative Health Day — Vasant Panchami (Hindu) ● Maternal Health Awareness Day	24 ★ International Day of Education (UN)
25	26 ★ International Customs Day (UN)	27 ★ International Day of Commemoration in Memory of the Victims of the Holocaust (UN)	28 ★ Data Privacy Day	29	30 ● National Have Fun at Workday	31 — Guru Har Rai (Sikh)

February 2026

Month-Long Observance

Black History Month / American Heart Month/ Ethnic Equality Month/Social Justice Awareness Month/National Cancer Prevention Month

Sunday	Monday	Tuesday	Wednesday	Thursday	Friday	Saturday
1 ● National Freedom Day	2 - Candlemas (Christian) ★ World Wetlands Day	3 - Night of Forgiveness (Islam) ● National Women Physician Day	4 ▲ Rosa Parks Day ★ World Cancer Day ★ World Read Aloud day ● National Girls and Women in Sports Day	5	6 ★ International Day of Zero Tolerance for Female Genital Mutilation (UN)	7 ● Safer Internet Day
8	9	10	11 ★ International Day of Girls and Women in Science ★ World Day of the Sick	12 ▲ Abraham Lincoln's Birthday	13 - Tu B'Shevat (Jewish) ★ World Radio Day (UN)	14 ● Valentine's Day ▲ Frederick Douglas Birthday (Abolitionist and Social Reformer)
15 - Maha Shivaratri (Hindu) - Nivvana Day (Buddhist) ▲ Susan B. Anthony Birthday (Women's Suffrage Leader)	16 ● Presidents Day ● Washington's Birthday	17 - Shrove Tuesday / Mardi Gras (Christian) - Ramadan begins (Islam) - Lunar New Year (Year of the Horse)	18 - Ash Wednesday (Christian) - Magh Ramadan starts (Islam)	19 ★ International Childhood Cancer Day	20 ★ World Day of Social Justice	21 ★ International Mother Language Day (UN)
22 ★ World Thinking Day	23 - Clean Monday (Christian)	24	25 ● National Braille Day ● Quiet Day	26	27	28

March 2026

Month-Long Observance

National Women's History Month / National Developmental Disabilities Awareness Month/ Gender Equality Month /Deaf History Awareness Month (March 13-April 15) / Greek American/Irish American Heritage Month / National Kidney/Colon Cancer Awareness Month

Sunday	Monday	Tuesday	Wednesday	Thursday	Friday	Saturday
1 <ul style="list-style-type: none"> — St. David's Day (Christian) * Zero Discrimination Day (UN) * Self-Injury Awareness Day 	2 <ul style="list-style-type: none"> ● Read Across America Day — Purim (Jewish) 	3 <ul style="list-style-type: none"> * World Wildlife Day (UN) — Magha Puja Day (Buddhist) 	4 <ul style="list-style-type: none"> — Holi (Hindu) ● Equal Pay Day 	5	6 <ul style="list-style-type: none"> ● Employee Appreciation Day ● National Dentist's Day 	7
8 <ul style="list-style-type: none"> * International Women's Day ■ Daylight Saving Time begins (Spring forward) 	9	10 <ul style="list-style-type: none"> * International Day of Women Judges (UN) ▲ Harriet Tubman Day 	11 <ul style="list-style-type: none"> ● National Registered Dietitian Nutritionist Day 	12 <ul style="list-style-type: none"> * World Kidney Day 	13	14 <ul style="list-style-type: none"> * Pi Day — Nankshani New Year (Sikh)
15 <ul style="list-style-type: none"> ● Long COVID Awareness Day 	16 <ul style="list-style-type: none"> — Laylat al-Qadr (Islam) 	17 <ul style="list-style-type: none"> ● St Patrick Day 	18 <ul style="list-style-type: none"> — Ramadan ends 	19 <ul style="list-style-type: none"> — Chaitra Navrati begins (Hindu) 	20 <ul style="list-style-type: none"> — Eid al-Fitr (Islam) — Nowruz (Persian) ■ Vernal Equinox International Day of Happiness (UN) 	21 <ul style="list-style-type: none"> * International Day for the Elimination of Racial Discrimination * World Down Syndrome Day (UN)
22 <ul style="list-style-type: none"> * World Water Day (UN) 	23 <ul style="list-style-type: none"> ● Atheist Day (US) 	24 <ul style="list-style-type: none"> * World Tuberculosis Day (UN) 	25 <ul style="list-style-type: none"> * International Day of Remembrance of the Victims of Slavery and the Transatlantic Slave Trade (UN) 	26	27 <ul style="list-style-type: none"> — Ram Naumi (Hindu) 	28
29 <ul style="list-style-type: none"> — Palm Sunday (Christian) ● National Vietnam War Veterans' Day 	30 <ul style="list-style-type: none"> ● Doctor's Day 	31 <ul style="list-style-type: none"> ● Cesar Chavez Day * International Transgender Day of Visibility — Mahavir Jayanti (Jain) 				

April 2026

Month-Long Observance

**Earth Month/ Celebrate Diversity Month / National Volunteer Month / National Child Abuse Prevention Month /
Autism Awareness Month / Arab-American Heritage Month/ Stress Awareness Month**

Sunday	Monday	Tuesday	Wednesday	Thursday	Friday	Saturday
			1 - Passover begins (Jewish) • April Fools Day	2 * World Autism Awareness Day (UN) - Hanuman Jayanti (Hindu) • Maundy Thursday	3 - Good Friday (Christian)	4 • National Tartan Day (Scottish American) - Holy Saturday (Christian)
5 - Easter Sunday * International Day of Conscience (UN) ▲ Birthday of Booker T. Washington (Early Dominant Leader)	6 - Easter Monday	7 * World Health Day (UN)	8	9 - Holy Thursday (Christian) - Theravad New Year (Buddhist) - Passover ends (Jewish)	10 - Orthodox Good Friday • National Day of Silence (LGBTQIAA+)	11 - Solar New Year (Hindu)
12 - Orthodox Easter	13 ▲ Dolores Huerta Day - Vaisakhi (Sikh) - Orthodox Easter Monday	14 • Emancipation Day Proclamation (Black American) - Vaisakhi (Sikh New Year) • Be Kind to Lawyers Day	15 • Arbor Day (CA) • Tax Day • National American Sign Language Day	16	17	18
19 • Patriot Day	20	21 - 1 st day of Ridvan (Baha'i)	22 - Yom Ha'atzmaut (Jewish) • Earth Day • Administrative Professional Day	23 • Take our Daughters and Sons to Work	24 • National Arbor Day • Genocide Remembrance Day (CA)	25

26 * World Day for Safety and Health at Work (UN)	27	28	29 — 9 th day of Ridvan (Baha'i)	30		
--	----	----	--	----	--	--

GARE

May 2026

Month-Long Observance

Mental Health Awareness Month / Asian Pacific American Heritage Month/ Better Hearing and Speech Month / Older Americans Month / Jewish American Heritage Month / Haitian Heritage Month /Indian Heritage Month / South Asian American Heritage Month/ ALS Awareness Month/ Military Appreciation Month/ Deaf Awareness Week (6th – 10th)/ Correctional Officers Week (3rd -9th)

Sunday	Monday	Tuesday	Wednesday	Thursday	Friday	Saturday
					1 <ul style="list-style-type: none"> ✳ International Workers' Day (May Day) — Vesak- Buddha Day (Buddhist) ● Loyalty Day ● Law Day 	2
3 <ul style="list-style-type: none"> ✳ World Press Freedom Day (UN) 	4 <ul style="list-style-type: none"> ● Firefighters Day 	5 <ul style="list-style-type: none"> ● Cinco De Mayo ● National Day for Awareness of Missing and Murdered Indigenous Women and Girls ● National Teacher Appreciation Day 	6 <ul style="list-style-type: none"> ● National Nurse Day 	7 <ul style="list-style-type: none"> ● National Day of Prayer and Reason ● National Barrier Awareness Day 	8 <ul style="list-style-type: none"> ● National Provider Appreciation Day ● Military Spouse Appreciation Day ✳ World Red Cross Day 	9
10 <ul style="list-style-type: none"> ✳ World Lupus Day ● Mother's Day 	11	12 <ul style="list-style-type: none"> ✳ International Nurses Day 	13	14 <ul style="list-style-type: none"> — Ascension Day (Christian) 	15 <ul style="list-style-type: none"> ● Peace Officers Memorial Day ✳ International Day of Families — Haj (Islam) 	16 <ul style="list-style-type: none"> ✳ International Day of Living Together in Peace ● Armed Forces Day
17 <ul style="list-style-type: none"> ✳ International Day Against Homophobia, Transphobia and Biphobia 	18	19 <ul style="list-style-type: none"> ▲ Malcom X Day 	20 <ul style="list-style-type: none"> ✳ Emergency Medical Services for Children Day 	21 <ul style="list-style-type: none"> ✳ World day for cultural diversity for Dialogue and Development 	22 <ul style="list-style-type: none"> ▲ Harvey Milk Day — Shavuot (Jewish) ● National Maritime Day 	23
24 <ul style="list-style-type: none"> — Declaration of the Bab (Baha'i) — Pentecost (Christian) 	25 <ul style="list-style-type: none"> ● Memorial Day ● National Missing 	26	27 <ul style="list-style-type: none"> — Eid al-Adha (Islam) 	28 <ul style="list-style-type: none"> ✳ World Hunger Day 	29 <ul style="list-style-type: none"> — Ascension of Baha'u'llah (Baha'i) 	30 <ul style="list-style-type: none"> ✳ World Multiple Sclerosis Awareness Day

	Children's Day					
31	<ul style="list-style-type: none"> ✳ World No-Tobacco Day — Trinity Sunday 					

GARE

June 2026

Month-Long Observance

Pride Month (LGBTQIAA+) / Immigrant Heritage Month / National Caribbean American Heritage Month / Alzheimer's and Brain Awareness Month / Black Music Month/ Men's Health Month

Sunday	Monday	Tuesday	Wednesday	Thursday	Friday	Saturday
	1 * Global Day of Parents (UN)	2 ● American Indian Citizenship Act of 1924	3 * World Bicycle Day (UN)	4 * International Day of Innocent Children Victims of Aggression (UN)	5 * World Environment Day (UN)	6 * D-Day
7 * World Food Safety Day (UN)	8 * World Oceans Day	9	10 - Eid al-Adha begins (Islam)	11	12 ● Loving Day * World Day Against Child Labor (UN)	13
14 ● Race Unity Day ● National Puerto Rican Day Parade ● National Children's Day ● Flag Day ● U.S Army Birthday (251th)	15 * World Elder Abuse Awareness Day	16 * International Day of Family Remittances (UN) - Muharram Islamic New Year (Islam)	17	18 * International Day of Countering Hate Speech (UN) -Guru Arjan (Sikh)	19 ● Juneteenth Day (Federal Holiday) ● Juneteenth (CA)	20 * World Refugee Day ● American Eagle Day
21 ■ Summer Solstice ■ Longest Day of the year * International Day of the Celebration of the Solstice (UN) * International Day of Yoga ● Father's Day	22	23 ● Public Service Day	24	25 - Ashura (Day of Remembrance) - Islam	26 * International Day Against Drug Abuse and Illicit Trafficking (UN) - Islamic New Year (Hijra)	27 ▲ Helen Keller Day (Disability Rights Activist) ● National HIV Testing Day
28 ● Christopher Street Liberation Day (LGBT Civil Rights)	29	30				

July 2026

Month-Long Observance

French American Heritage Month / Hindu Persecution Awareness Month/Disability Pride Month/National Minority Mental Health Awareness Month
National Park & Recreation Month / UV Awareness Month

Sunday	Monday	Tuesday	Wednesday	Thursday	Friday	Saturday
			1 - Dharma Day (Buddhist)	2 ● Thurgood Marshall's birthday (Civil Rights Activist)	3	4 ● Independence Day (250 th anniversary)
5	6	7	8	9 - Martyrdom of the Bab (Baha'i)	10	11 ✦ World Population Day (UN)
12	13	14 ● Bastille Day ● Non-Binary People's Day	15 ✦ World Youth Skills Day (UN)	16 - Puri Rath Yatra (Hindu)	17	18 ✦ Nelson Mandela International Day (Civil Rights Leader)
19	20	21	22 - Tisha B'Av (Jewish)	23	24	25 ✦ World Drowning Prevention Day
26 ● National Disability Independence Day ● Parent's Day	27 ● National Korean War Veterans Armistice Day	28	29 - Asalha Puja Day (Buddhism) - Guru Purnima (Hindu)	30 ✦ International Day of Friendship (UN) ✦ World Day Against Trafficking in Persons (UN)	31	

August 2026

Month-Long Observance

National Civility Month / National Black Business Month / Muslim Appreciation and Awareness Month/National Wellness Month

Sunday	Monday	Tuesday	Wednesday	Thursday	Friday	Saturday
						1
2	3	4 ● US Coast Guard Day (235 th)	5	6	7 ● Purple Heart Day - Guru Harkishan Singh (Sikh)	8 - Obon (Buddhism)
9 ✳ International Day of the World's Indigenous People	10	11	12 ✳ International Youth Day	13 ● Left-Handers Day	14	15 - Assumption of Mary (Christian)
16	17 - Nag Panchami (Hindu) ▲ Marcus Garvey Day	18	19 ✳ World Humanitarian Day (UN)	20	21 ● National Senior Citizens Day ✳ International Day of Remembrance of and Tribute to the Victims of Terrorism (UN)	22 ✳ International Day Commemorating the Victims of Acts of Violence Based on Religion or Belief (UN)
23 ✳ International Day for the Remembrance of the Slave Trade and its Abolition ● Health Unit Coordinator Day	24	25	26 ✳ Women's Equality Day - Prophet's Birthday (Islam) - Onam (Hindu)	27	28 - Raksha Bandhan (Hindu)	29

<p>30</p> <ul style="list-style-type: none"> ● National Grief Awareness Day 	<p>31</p> <ul style="list-style-type: none"> ✦ International Day for People of African Descent (UN) ✦ International Overdose Awareness Day 					
--	--	--	--	--	--	--

GARE

September 2026

Month-Long Observance

National Latino/Hispanic Heritage Month (begins 9/15) / National Recovery Month /
 Suicide Prevention Month / National Guide Dog Month /International Week of the Deaf (Sept 21-27)/ **Blood Cancer Awareness
 Month / Childhood Cancer Awareness Month/National Inclusion Week and Occupational Health Awareness Week (Sept
 23-29) / Prostate Cancer Awareness Month**

Sunday	Monday	Tuesday	Wednesday	Thursday	Friday	Saturday
		1 - Guru Granth Sahib Jayanti (Sikh)	2	3	4 - Shree Krishna Janmashtami (Hindu)	5 * International Day of Charity (UN)
6	7 ● Labor Day	8 - Paryushan Parv (Jain) * International Literacy Day * World Physical Therapy Day	9 ● California Admission Day	10 * World Suicide Prevention Day	11 ● Patriot Day ● First Responders Day	12 - Rosh Hashanah (Jewish) ● Federal Lands Cleanup Day
13 ● National Grandparent's Day	14 - Holy Cross Day	15 - Ganesh Chaturthi (Hindu) - Forgiveness Day (Jain) * World Afro Day * International Day of Democracy (UN)	16 * International Day of Peace	17 ● Constitution Day ● Citizenship Day * World Patient Safety Day (WHO)	18 * International Equal Pay Day ● U.S Air Force Birthday (79th) ● National POW/MIA Recognition Day ● National Aging Awareness Day	19 ● National Cleanup Day
20 * World Clean Up Day (UN)	21 * International Day of Peace * World Gratitude Day - Yom Kippur (Jewish)	22 - Navratri Begins (Hindu) ● American Businesswomen's Day	23 ● Bi-Visibility Day September Equinox (Autumn) * International Day of Sign languages (UN)	24	25 - Sukkot begins (Jewish) ● Native American Day ● Mid-Autumn Festival	26 * European Day of Languages ● National Public Lands Day ● National Family Health and Fitness Day
27 * World Tourism Day (UN)	28 * International Day for Universal Access to Information (UN)	29 * International Day of Awareness of Food Loss and Waste (UN) * World Heart Day	30 ● National Women's Health and Fitness Day * International Translation Day (UN)			

--	--	--	--	--	--	--

GARE

October 2026

Month-Long Observance

Global Diversity Awareness Month / National Work and Family Month / Family History Month
 LGBTQ History Month / National Disability Employment Awareness Month / Bullying Prevention Month
 Domestic Violence Awareness Month / Breast Cancer Awareness Month / Health Literacy Month
 National Polish/German/Filipino/Italian American Heritage Month

Sunday	Monday	Tuesday	Wednesday	Thursday	Friday	Saturday
				1 * International Day for Older Persons (UN) - Maha Navami (Hindu) * World Vegetarian Day	2 * International Day of Nonviolence ▲ Mahatma Gandhi's Birthday (Civil Rights Leader) - Sukkortends (Jewish)	3 - Shemini Atzeret (Jewish)
4 - Feast of St. Francis of Assisi (Christian) - Simchat Torah (Jewish)	5 * World Teacher's Day * Child Health Day * World Habitat Day - Jotijot (Sikh)	6 * World Cerebral Palsy Day	7 - First Day of Sukkot (Jewish)	8 * International Day for Natural Disaster Reduction	9 * World Post Day (UN)	10 * World Mental Health Day * World Inclusion Day * World Sight Day
11 - Sharad Navratri- 9 days begins (Hindu) * International Day of the Girl Child (UN)	12 ● Native American Day * World Arthritis Day ● National Freethought Day ● Indigenous People's Day	13 ● U.S Navy Birthday (251st) - Last Day of Sukkot (Jewish)	14	15 ● White Cane Safety Day ● Spirit Day (LGBTQIAA+ anti-bullying) ● Medical Assistants Recognition Day	16 * World Food Day ● Boss's Day	17 * International Day for the Eradication of Poverty (UN)
18	19 * International Breast Cancer Day	20 - Durga Ashtami Maha Navrati ends (Hindu)	21 - Dussehra (Hindu) * International Pronouns Day	22 * International Stuttering Awareness Day	23 ● Paralegal Day	24 * United Nation Day

		<ul style="list-style-type: none"> ✦ World Osteoporosis Day 				
25	<ul style="list-style-type: none"> ● Intersex Awareness Day 	<ul style="list-style-type: none"> ✦ World Day for Audiovisual Heritage 	28	<ul style="list-style-type: none"> ✦ World Stroke Day 	30	<ul style="list-style-type: none"> ● Halloween

GARE

November 2026

Month-Long Observance

Native American and Alaskan Native Heritage Month / Sikh American Awareness and Appreciation Month
 November (Month long fundraiser for men's issues) / Diabetes Awareness Month/ Hospice and Palliative Care Month

Sunday	Monday	Tuesday	Wednesday	Thursday	Friday	Saturday
1 <ul style="list-style-type: none"> — All Saints' Day (Christian) ■ Day Light Saving Time ends (Fall back) 	2 <ul style="list-style-type: none"> — Dia de Los Muertos/Day of the Dead — All Souls' Day 	3 <ul style="list-style-type: none"> ● Election Day 	4 <ul style="list-style-type: none"> ● National Stress Awareness Day 	5	6	7
8 <ul style="list-style-type: none"> — Diwali or Deepavali (Hindu/Jain/Sikh/Buddhist) — Bandi Chhor Divas (Sikh) 	9 <ul style="list-style-type: none"> ★ World Freedom Day ✦ World Adoption Day 	10 <ul style="list-style-type: none"> — Birth of the Bab (Bahai) ● U.S Marine Corps Birthday (251th) 	11 <ul style="list-style-type: none"> ● Veterans Day 	12	13 <ul style="list-style-type: none"> ★ World Kindness Day 	14 <ul style="list-style-type: none"> ★ World Diabetes Day (UN)
15	16 <ul style="list-style-type: none"> ✦ International Day for Tolerance 	17	18	19 <ul style="list-style-type: none"> ✦ International Men's Day 	20 <ul style="list-style-type: none"> ● Transgender Day of Remembrance (LGBTQ++) World Children's Day (UN) 	21 <ul style="list-style-type: none"> ★ World Television Day (UN)
22	23	24 <ul style="list-style-type: none"> — Guru Nanak Jayanti (Sikh) — Guru Tegh Bahadur (Sikh) — Kartik Poornima (Hindu) 	25 <ul style="list-style-type: none"> ★ International Day for the Elimination of Violence Against Women 	26 <ul style="list-style-type: none"> ● Thanksgiving Day — Day of the Covenant (Baha'i) 	27 <ul style="list-style-type: none"> ● Native American Heritage Day 	28 <ul style="list-style-type: none"> — Ascension of Abdu'l-Baha (Baha'i)
29 <ul style="list-style-type: none"> ✦ International Day of Solidarity with the Palestinian People (UN) — First Sunday of Advent (Christian) 	30 <ul style="list-style-type: none"> — St. Andrew Day (Christian) 					

December 2026

Month-Long Observance
 Universal Human Rights Month / AIDS Awareness Month

Sunday	Monday	Tuesday	Wednesday	Thursday	Friday	Saturday
		1 ✦ World AIDS Day ● Giving Tuesday - Advent- First Sunday (Christian)	2 ✦ International Day for the Abolition of Slavery (UN)	3 ✦ International Day of Persons with Disabilities (UN) ✦ World Soil Day (UN)	4 - Hanukkah begins (Jewish)	5 ✦ International Volunteer Day (UN) - Chanukah/Hanukkah - begins (Jewish)
6 - St Nicholas Day (Christian)	7 ● Pearl Harbor Remembrance Day	8 - Feast of Immaculate Conception (Christian) - Bodhi Day (Buddhist)	9 ✦ International Genocide Prevention Day ✦ International Anti-Corruption Day (UN) - Geeta Jayanti (Hindu)	10 ✦ Human Rights Day - Our Lady of Guadalupe-Feast Day (Christian)	11	12 - Feast of Our Lady of Guadalupe (Christian) ✦ International Day of Neutrality (UN) - Chanukah/Hanukkah - ends (Jewish)
13 ● U.S National Guard Day(390 th)	14 - Las Posadas begins (Mexican)	15 ● Bill of Rights Day (US)	16	17 ● Wright Brothers Day	18 ✦ International Migrants Day (UN) ✦ Arabic Language Day (UN)	19
20 ✦ International Human Solidarity Day (UN)	21 ■ Yule Winter ■ Winter Solstice (Pagan) ■ Shortest Day of Year	22	23	24 - Christmas Eve (Christian) - Las Posadas ends (Mexican)	25 - Christmas Day	26 - - Kwanzaa- First Day of Seven Day Celebration
27 ✦ International Day of Epidemic Preparedness (UN)	28 - Day of Holy Innocents (Christian)	29	30	31 ● New Year's Eve - Watch Night (Christian)		

Meeting Facilities List

County Area	Name	Type	Address	Seating Capacity	Notes	Contact	Website
North	Live Oak Grange	Hall	1900 17th Ave, Santa Cruz, CA 95062	100		dfeldman26@yahoo.com (831) 325-3233	https://sites.google.com/site/liveoakgrange/Hall-Rental
North	Live Oak Community Center	Hall	979 17th Avenue Santa Cruz, CA 95062	140 (2 rooms combined)	A/V Speaker	reservations@parks.santacruzcountyca.gov (831) 454-7938	https://parks.santacruzcountyca.gov/Home/PermitsReservations/MeetingRooms.aspx
North	London Nelson Community Center	Multiuse room	301 Center St, Santa Cruz, CA 95060	120	Podium Large HDMI TV (\$10 fee) \$82/hr	(831) 420-6177 (831) 420-6183 (room supervisor, call once booked for setup)	https://www.cityofsantacruz.com/government/city-departments/parks-recreation/facilities/london-nelson-community-center/room-rentals
North	Felton Community Hall	Hall, meeting room	6191 Highway 9, Felton, CA 95018	Meeting room: 30		reservations@feltonhall.org (831) 335-5621	https://www.feltonhall.org/
North	Pacific Elementary	Multiuse room, classrooms	50 Ocean St, Davenport, CA 95017	Varies		hredding@pacificesd.org (831) 425-7002	https://www.pacificesd.org/facilities-use.html
North	Santa Cruz Civic Auditorium	Auditorium, meeting rooms	307 Church St, Santa Cruz, CA 95060	Varies		jreiter@santacruzca.gov (831) 420-5242	https://www.cityofsantacruz.com/government/city-departments/parks-recreation/civic-auditorium/reserving-the-civic
North	Harvey West Clubhouse & Scouthouse	Hall	326 Evergreen St, Santa Cruz, CA, 95060	Clubhouse : 90 Scouthouse: 62	Projector screen (clubhouse) Clubhouse is \$71/hr, Scouthouse is \$60/hr, \$150 refundable damage deposit	(831) 420-5270	https://www.cityofsantacruz.com/government/city-departments/parks-recreation/reservations/indoor-facilities
North	Santa Cruz High School Auditorium	Auditorium	415 Walnut Avenue Santa Cruz, 95060	780		(831) 429-3904	https://sccs.civicpermits.com/Account/Login
North	Santa Cruz Museum of Art & History (MAH)	Varies	705 Front St. Santa Cruz, CA 95060	Varies		(831) 429-1964	https://www.santacruzmah.org/rent

North	Santa Cruz Veterans Memorial Building	Varies	846 Front St, Santa Cruz, CA 95060	Varies		booking@vetshall.org (831) 454-0478	https://www.veteranshall.org/ https://www.veteranshall.org/rental-rates/
North	Santa Cruz Police Department Community Room	Community room	155 Center St, Santa Cruz, CA 95060	85 seated 40 seated with tables	Projector and screen, microphone and stand Minimum rental 2 hours: \$135 6 hours: \$264 Additional hours: \$36	(831) 420-5812 confmpc@santacruzca.gov	https://www.santacruzca.gov/Government/City-Departments/Police/How-do-I/Community-Room
North	County Building Basement Conference Room	Conference room	701 Ocean St # 520, Santa Cruz, CA 95060			(831) 454-2000	https://www.santacruzcountyca.gov/Government.aspx
North	Santa Cruz City Council Chambers	Council chambers	809 Center St, Santa Cruz, CA 95060	11 seats at the dais 140 seated	In-person only, no hybrid capability Monday-Friday 8:00 a.m.-12:00 p.m. and Monday-Thursday 1:00 p.m.-5:00 p.m.	(831) 420-5030	https://www.santacruzca.gov/Home
Mid	Aptos Library	Meeting room	7695 Soquel Dr, Aptos, CA 95003	76	85-inch wall-mounted screen		https://www.santacruzpl.org/meeting-rooms/
Mid	Capitola Library	Meeting room	2005 Wharf Rd, Capitola, CA 95010	60	90-inch wall-mounted screen Microphone with ceiling speakers		https://www.santacruzpl.org/meeting-rooms/
Mid	Mid County Senior Center	Hall	829 Bay Avenue Capitola, CA 95010	Hall: 185 Annex: 80	Hall: large screen TV, PA system Annex: large screen TV, projector and screen	mcsc4u@att.net (831) 476-4711	https://www.mcsc-capitola.org/rentals/
Mid	Community Foundation Santa Cruz County	Varies	7807 Soquel Drive, Aptos, CA 95003			facilities@cfsc.org (831) 662-2000	https://www.cfsc.org/blog/community-foundation-room-reservations
South	Watsonville Civic Plaza Community Rooms	Hall	275 Main Street, Fourth Floor,	150 (2 rooms combined, can be split in half)	A/V	israel.tirado@watsonville.gov 831-768-3240	https://www.watsonville.gov/1143/Indoor-Facilities

			Watsonville, CA 95076				
South	Watsonville Library	Meeting rooms	250 Main Street Watsonville, CA 95076	Robert & Elayne Stein Meeting Room: 78	A/V with VGA connection (bring HDMI converter)	831-768-3406	https://www.watsonville.gov/608/Study-Meeting-Rooms
South	Mello Center	Auditorium	250 E Beach St, Watsonville, CA 95076			andrea_botsford@pvusd.net 831-234-3781	https://www.mellocenter.org/rental-information
South	Watsonville Senior Center	Hall	114 E. 5th Street, Watsonville, CA 95076	70		israel.tirado@watsonville.gov 831-768-3240	https://www.watsonville.gov/1143/Indoor-Facilities
South	Cabrillo Watsonville Center	Multiple	318 Union Street Watsonville, CA 95076	Auditorium : 70	Projector Audio \$150/hr plus staffing of \$75/hr, cleaning fee of \$120	chhankes@cabrillo.edu (831) 786-4701	https://extension.cabrillo.edu/facilitiesrentals/
South	Ramsay Park Family Center (closed until Spring 2026)	Hall	1301 Main Street, Watsonville, CA 95076			israel.tirado@watsonville.gov 831-768-3240	https://www.watsonville.gov/1143/Indoor-Facilities
South	Watsonville Veterans Hall (currently closed)	Hall	215 E Beach Street Watsonville, CA 95076	400		israel.tirado@watsonville.gov 831-768-3240	https://www.watsonville.gov/1143/Indoor-Facilities
South	Watsonville YMCA	Meeting room	27 Sudden St, Watsonville, CA 95076		Available Saturday or Sunday after 3 pm	831-728-9622	https://www.centralcoastymca.org/watsonville-family-ymca/

Digital Engagement Tools, Guides and Best Practices

Community Engagement Tools

[Poll Everywhere](#) – An innovative online polling platform. *Free and Paid options available.*

[Community Remarks](#) – Survey map that makes it easy for citizens to access a map, plot a comment, and go. *Paid options available.*

[Crowdbrite](#) – Online platform for crowdsourcing and innovative stakeholder & public engagement. *Paid options available.*

[Mind Mixer](#) – An online engagement platform. *Paid options available.*

[Interactive Text](#) – Platform to engage people through texts. *Paid options available.*

[Survey Monkey](#) – Online survey platform. *Paid options available.*

[MetroQuest](#) – Online planning and engagement platform for online public engagement solution for urban transportation planning. *Paid options available.*

[Bang the Table: Engagement HQ](#) – Platform for local and city governments to drive online public participation. *Paid options available.*

[OpenGov](#) – Online platform to help allocate resources, increase efficiency, improve public engagement, and make data and information readily available to staff and elected officials. *Paid options available.*

[Thoughtexchange](#) – Online crowdsourcing platform to solicit ideas from participants, who then rank the ideas submitted by other meeting participants. *Paid options available.*

[Miro](#) – Online collaborative whiteboard. *Free and Paid options available.*

[Slido](#) – Tool to empower an audience to ask questions, vote in polls and be a part of the discussion. *Free and Paid options available. Paid options available.*

[Balancing Act](#) – An easy-to-use online budget simulation that engages stakeholders to help leaders make tough choices. *Paid options available.*

[Konveio](#) – A digital outreach platform that turns regular PDFs into Social Documents to better convey ideas, collect feedback and spark action. *Free and Paid options available.*

[Social Pinpoint](#) – A customizable community engagement platform to help organizations improve the way they interact and engage their community. *Paid options available.*

[76Engage](#) – A platform for effective digital engagement, providing engagement managers with publishing, management, moderation, analysis, and reporting. *Paid options available.*

[Participate.online](#) – An online engagement platform for anytime, anywhere participation. *Paid options available.*

[Civic Responsibility Guide: Resources to Promote Civic Engagement](#) – Published by Concord Law School.

Meeting Tools

[Mentimeter](#) – Platform to create interactive presentations and meetings. *Free and Paid options available.*

[MeetingSift](#) – Collaboration platform to run more productive meetings. *Free and Paid options available.*

[GoToMeeting/GoToWebinar](#) – A video chat client that is one of the most established and reliable in the industry. *Paid options available.*

[Webex](#) – Cisco’s video conference solution, integrates directly with their Citrix cloud platform. *Free and Paid options available.*

[Zoom](#) – The newer and exceedingly popular video conferencing solution for online meetings and conferences. *Free and Paid options available.*

[Facebook Live](#) – Livestreaming platform for events, performances and gatherings on Facebook. *Free options available.*

[YouTube](#) – A platform to post videos and livestream events. *Free options available.*

[Form Site](#) – Online forms and surveys. *Free and Paid options available.*

[Minutes.io](#) – A platform for effortlessly taking meeting notes and minutes. *Paid options available.*

[Kahoot!](#) – A Fun multiple-choice customizable quiz game that users can play from their phones and computers. *Free and Paid options available.*

[Lucidcharts](#) – A web-based proprietary platform that is used to allow users to collaborate on drawing, revising and sharing charts and diagrams. *Free and Paid options available.*

Examples of Tools in Action

[Mullen Area Master Plan](#), Missoula, Montana — Online virtual charrette.

[Unincorporated San Mateo County Active Transportation](#) – Project engagement page using participate online.

[City of San Luis Obispo Open City Hall](#) – Online forum using OpenGov’s Open City Hall.

Best Practices and Guides

[Best Practices for Virtual Engagement](#), Local Government Commission

[Understanding Digital-First Community Engagement](#), Bang the Table

[Virtual Toolkit](#), Divided Community Project

[Broadening Public Participation Using Online Engagement Tools](#), Institute for Local Government

[Equitable Public Participation](#), Leadership Counsel for Justice & Accountability

[Participation Tools for Better Community Planning](#), Local Government Commission

[Town Planning Stuff Everyone Needs to Know: Ep 13: Staying Engaged, Online](#), Dover Kohl & Associates – Town planner Victor Dover describes how and why to keep collaboration going, even during times of crisis and social distancing.

[Virtual Public Engagement](#): A more Inclusive Approach to Charrettes, CNU

[How to do Online Meetings and Town Halls Webinar](#), City of Oakland

[How To do Online Meetings & Town Halls Toolkit](#), City of Oakland

[How To Facilitate Effective Virtual Meetings](#), Beth’s Blog

[Online Facilitation Resources](#), 350 Global Trainings

[The Definitive Guide To Facilitating Remote Workshops](#), MURAL – Insights, tools and case studies from digital-first companies and expert facilitators.

[Virtual Meetings for Clarity and Momentum](#), CoCreative

[Facilitating Effective Virtual Meetings](#); Sarah Rubin, Outreach and Engagement Coordinator, California Department of Conservation

[Online Collaboration Tools](#), Community at Work

[Tips for Online Retreats and Meetings](#)

[Zoom tutorials for phone & computer; English & Español](#), UC Merced

Source: CivicWell

<https://civicwell.org/civic-resources/virtualengagement/>

AGENDA: April 19, 2026

TO: Interagency Technical Advisory Committee (ITAC)
FROM: Riley Gerbrandt, P.E., Associate Transportation Engineer
RE: Zero Emission Passenger Rail and Trail Project Update

RECOMMENDATIONS

Staff recommends that the Committee receive an informational update and provide input on the Zero Emission Passenger Rail and Trail Project (ZEPRT)'s Trail Segments 13-20 Memo.

BACKGROUND

The Regional Transportation Commission (RTC) prepared a Project Concept Report for passenger rail transit between Pajaro and Santa Cruz and the multi-use bicycle and pedestrian trail (Coastal Rail Trail) along the Santa Cruz Branch Line, including between Rio del Mar and Pajaro (Segments 13 through 20) and the Capitola Trestle (Segment 11, Phase 2). Since late 2023, work has included development of the purpose and need statement; guidelines for railroad bridge repairs and replacements; typical design cross sections; horizontal setback guidelines; initial and revised conceptual alignments; analysis of rail transit vehicle types and station locations; consideration of funding opportunities and integration with state and interregional rail plans; and regulatory requirements. Information on the project is online at: <http://www.sccrtc.org/zeprt>.

In December 2025, the Commission accepted the ZEPRT Final Project Concept Report and directed staff to continue to pursue state and federal funding and coordination to advance passenger rail. In addition, the Commission directed staff to return with a proposal for construction and implementation of the Interim Trail for Segments 9-11.

DISCUSSION

As a supplement to the ZEPRT Final Project Concept Report, RTC has prepared a Draft Memo summarizing the ZEPRT conceptual trail alignments for Segments 13-20. The memo details the proposed conceptual alignment of the Ultimate Trail configuration to accommodate future passenger rail service as presented in the Final Project Concept Report. The memo

describes the boundary determination and presents the proposed alignments for each segment, which were developed through an iterative process including conceptual level engineering design, technical analysis, evaluation of potential constraints and impacts, and input gathered through community and stakeholder engagement.

The memo includes maps indicating the proposed Class I or Class IV trail facilities for each segment. Cross-section exhibits are also provided to illustrate potential future configuration of the roadway, trail, and passenger rail components. The rail and trail alignment will continue to be further defined as the ZEPRT project advances.

Conceptual cost estimates were developed for each segment. Quantities were assigned to bid items for specific items of work such as signage, pavement, earthwork, structures, and trackwork. Items with minimal design detail but included in the project scope were estimated through a parametric quantity or as a lump sum allowance. General condition items such as mobilization, quality control, traffic control, survey, and temporary erosion control were estimated as a percentage of total construction costs. Right-of-way (ROW) items such as acquisition costs and temporary construction easements, and utility relocations were assumed as a percentage of construction costs or as a lump sum allocation.

The pricing of the bid items were determined through historical unit prices from recent transit and roadway projects and based on engineering experiences. Due to the level of design, the pricing for unquantified items are assumed as allowances and lump sum costs based on elements of work from similar projects. These assumptions allow for sufficient costs to be allocated to the items as the project scope develops. Overall, given the conceptual level of design, a 40% contingency was added to the construction and ROW items to account for potential design and project scope uncertainties.

“Hard Cost” in 2026 dollars were developed and include for costs for construction item, ROW, and contingency. Soft costs for design, administration and right of way aquation were estimated by applying allocated percentages to the hard cost for each category. Preliminary engineering and environmental was assumed to be 15% of the hard cost subcategory. Final design was assumed to be 12% of the hard cost subcategory. Construction administration was assumed to be 15% of the hard cost subcategory.

Escalation was calculated at 4% annually of the Hard and Soft costs to the anticipated start Year of Expenditure (YOE) of 2035.

The following table summarizes the 2026 and YOE 2035 costs. To accommodate the Ultimate Trail configuration, estimates include costs associated with grading and track shifts necessary for future rail construction. Efficiencies of building the rail and trail projects together would considerably reduce costs of some rail segments. Trail cost savings of roughly 50 percent would be anticipated if the trail was built in conjunction with the rail project.

Segment	Grand Total (2026)	Grand Total YOE (2035)
Segment 13	\$ 59,900,000	\$ 85,300,000
Segment 14	\$ 83,100,000	\$ 118,300,000
Segment 15	\$ 74,400,000	\$ 105,900,000
Segment 16	\$ 144,500,000	\$ 205,700,000
Segment 17	\$ 71,500,000	\$ 101,800,000
Segment 18	\$ 36,000,000	\$ 51,300,000
Segment 18 Alt 1	\$ 83,100,000	\$ 118,200,000
Segment 19	\$ 3,800,000	\$ 5,400,000
Segment 20	\$ 26,400,000	\$ 37,600,000
Grand Total	\$ 582,700,000	\$ 829,500,000

Figure 1: Conceptual Cost Estimate

NEXT STEPS

Following the Commission's acceptance of the Final Project Concept Report in December 2025, the next phase of the ZEPRT Project would be to complete the preliminary engineering and environmental analysis of the Project. Staff continues to seek full funding to complete this phase, however, there are very few available funding sources at the state and federal level for pre-construction components of capital projects.

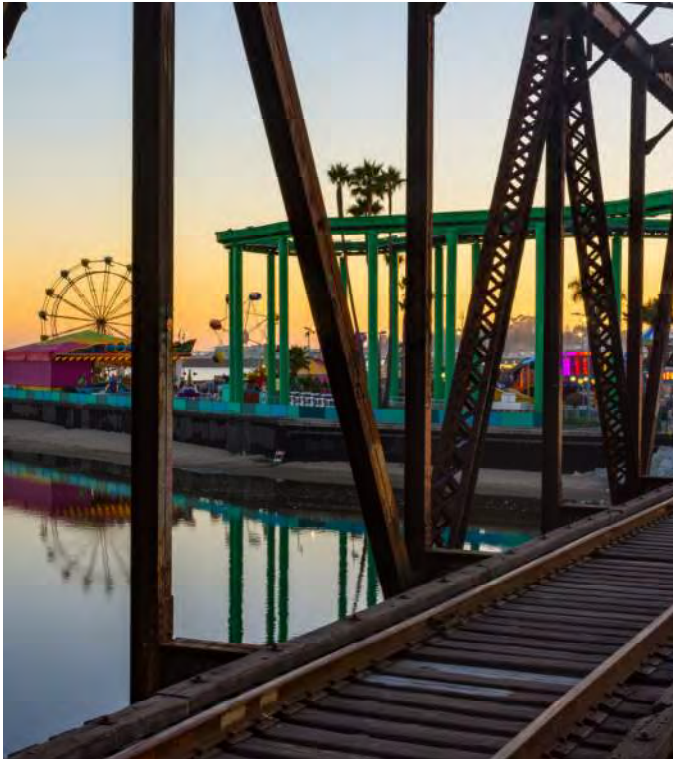
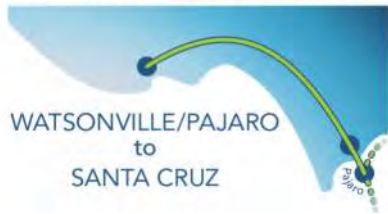
SUMMARY

Staff will provide an update on the Zero Emission Passenger Rail and Trail Segments 13-20 Memo. Input can be provided via email to zeprt@sccrtc.org.

ATTACHMENTS

- 1) ZEPRT Trail Segments 13-20 Memo Draft

ZERO EMISSION
PASSENGER RAIL AND TRAIL



Trail Segments 13-20

Memo

DRAFT

March 20, 2026

SCCRTC Zero Emission
Passenger Rail and Trail Project



The Santa Cruz County Regional Transportation Commission (SCCRTC) is committed to ensuring that no person is excluded from participation or subjected to discrimination in any SCCRTC activities. To request this file in an alternative format or an auxiliary aid or service for effective communication, contact the SCCRTC at (831) 460-3200 or info@sccrtc.org.

DRAFT

Table of Contents

Project Summary	5
Segment 13	6
Segment 13 Boundary Determination.....	6
Segment 13 Description.....	6
Segment 13 - Cost	7
Segment 13 – Map.....	7
Segment 13 - Cross Section	8
Segment 14	8
Segment 14 Boundary Determination.....	8
Segment 14 Description.....	8
Segment 14 - Cost	9
Segment 14 – Map	10
Segment 14 – Cross Section	10
Segment 15	10
Segment 15 Boundary Determination.....	10
Segment 15 Description.....	11
Segment 15 - Cost	12
Segment 15 – Map.....	12
Segment 16	13
Segment 16 Boundary Determination.....	13
Segment 16 Description.....	13
Segment 16 - Cost	14
Segment 16 – Map.....	14
Segment 16 - Cross Section.....	15
Segment 17B – Watsonville Slough	15
Segment 17B Boundary Determination	15
Segment 17B Description.....	15
Segment 17B - Watsonville Slough - Cost	16

Segment 17B - Watsonville Slough - Map	17
Segment 18A – West Beach Street	18
Segment 18A Boundary Determination.....	18
Segment 18A Description.....	18
Segment 18A – West Beach Street - Cost.....	19
Segment 18A - West Beach Street - Maps	19
Segment 18A - West Beach Street - Cross Sections	20
Segment 19 – West Beach/Rodriguez Street, City of Watsonville.....	21
Segment 19 Boundary Determination.....	21
Segment 19 Description.....	21
Segment 19 - West Beach/Rodriguez Street, City of Watsonville – Cost.....	21
Segment 19 - West Beach/Rodriguez Street, City of Watsonville – Map	22
Segment 19 - West Beach/Rodriguez Street, City of Watsonville – Cross sections.....	22
Segment 20 - Pajaro River	23
Segment 20 Boundary Determination.....	23
Segment 20 Description.....	23
Segment 20 – Pajaro River – Cost	24
Segment 20 - Pajaro River – Map	25
Segment 20 - Pajaro River – Cross Section	25
Appendices	26
A – Trail Segment Conceptual Cost Estimates	27
B – Trail Exhibits.....	37

Project Summary

The ZEPRT Project proposes implementation of new passenger rail service and stations on approximately 22 miles of the SCBRL from Pajaro in the east with the city of Santa Cruz in the west. The Project also proposes to develop 12 miles of the Coastal Rail Trail – Segments 13-20 from Rio Del Mar Boulevard through the community of La Selva Beach and the city of Watsonville – and the Capitola Trestle reach (Segment 11, Phase 2) to enhance local bicycle and pedestrian safety and connectivity. This Santa Cruz County Regional Transportation Commission (SCCRTC) Zero Emission Passenger Rail and Trail (ZEPRT) Trail Segment 13 through Segment 20 Memo presents a summary of the developed to-date proposed conceptual trail alignment within or close to the SCCRTC-owned Santa Cruz Branch Rail Line (SCBRL) corridor right-of-way.

The initial conceptual trail alignment presented for the ZEPRT Project in 2024 was designed to fit within the existing SCBRL corridor, where feasible, while accommodating both the rail and trail infrastructure. Consideration was taken for trail segments within the SCBRL that have already been constructed or are currently in design. This proposed alignment resulted from a robust iterative process consisting of conceptual level engineering design, technical analysis, assessment of potential constraints and impacts, and extensive community and stakeholder engagement. The rail and trail alignments will be further refined as the ZEPRT Project advances.

Segment 13

Length: 0.91 miles (4,798 LF) – Rio Del Mar Boulevard to Cliff Drive/Hidden Beach

Segment 13 Boundary Determination

The northern boundary of Trail Segment 13 begins in the railroad right of way under the Rio Del Mar Boulevard overcrossing of the right of way connecting to the Trail Segment 12 Class I facility creating a continuous trail southward from Aptos. This location provides for a connection with the existing Class III bike route along Rio Del Mar Boulevard as well as the existing bike facilities along Sumner Avenue. The southern end of the trail segment terminates at the end of the Hidden Beach rail trestle adjacent to Sumner Avenue.

Segment 13 Description

Trail Segment 13 will provide both pedestrian and bike access from the Rio Del Mar Boulevard vehicular overcrossing to Hidden Beach. At Hidden Beach, the proposed pedestrian and bike trail will connect to an existing trail facility allowing users to have direct coastal access from the Segment 13 trail. Due to the grade differential between the roadway at Rio Del Mar Boulevard and the trail, a vertical ingress and egress will be required to allow for user access from Rio Del Mar Boulevard to the trail. The proposed trail will run adjacent to the rail tracks on the inland-side under the Rio Del Mar Bridge and continue along the inland-side of the tracks until Hidden Beach. This section of track is in a depressed corridor, with steep side-slopes on either side separating the proposed rail and trail from residential parcels. Due to the narrow corridor the tracks may need to be reconstructed away from the trail to the coastal side of the corridor and small structures, such as retaining walls, may be needed along the north side of the corridor to support the steep side-slopes to allow for the required 12' trail width.

As previously noted, Segment 13 terminates at the end of the Hidden Beach rail trestle adjacent to Sumner Avenue. This trail crossing will require a new pre-engineered pedestrian and bike bridge that will align adjacent to the rail trestle. Once south of the Hidden Beach rail trestle, and over the new trail bridge, pedestrian and bike access will continue along the coastal side of Sumner Ave. At this location trail users can connect to the Hidden Beach parking lot through the existing trail that crosses under the Hidden Beach rail trestle from Sumner Ave to Hidden Beach.

Segment 13 Proposed Improvements

- 0.91 miles (4,798 LF) multi-use paved path (Class I) along the inland side of the railroad right-of-way

- Two vertical connections: One (1) at the Rio Del Mar Boulevard roadway overcrossing, One (1) at the Hidden Beach structure
- One (1) pre-engineered bike/pedestrian bridge, spanning a distance of four-hundred (400 ft) feet using three (3) different span lengths. Span lengths shall include one (1) eighty (80 ft) foot span, one (1) two-hundred and forty (240 ft) foot span, and one (1) eighty (80 ft) foot span.
- 2200 ft of track realignment and reconstruction and retaining walls
- Fencing to separate Segment 13 trail from the rail alignment within this same segment.

Segment 13 - Cost

Total Segment cost is \$59,900,00 in 2026 dollars.

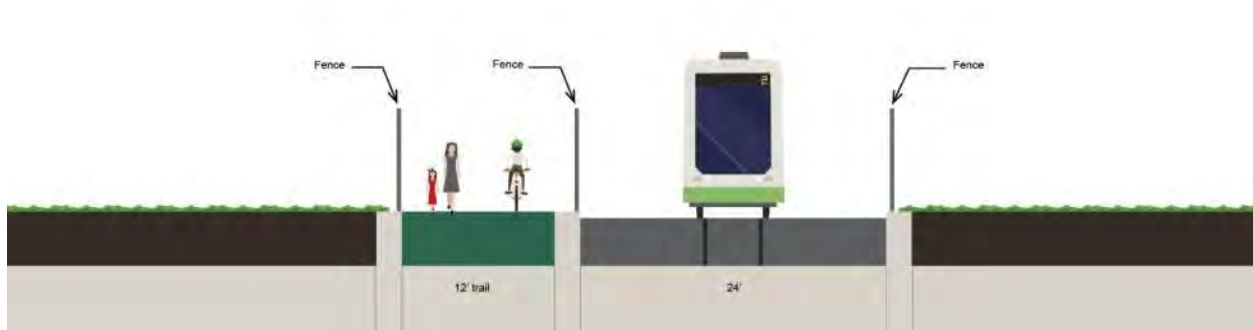
See Appendix A for additional details

Segment 13 – Map



Source: HDR

Segment 13 - Cross Section



Source: HDR

Segment 14

Length: 1.13 miles (5,967 LF) - Cliff Drive/Hidden Beach to Seascape Park

Segment 14 Boundary Determination

Segment 14 starts beyond the end of Hidden Beach rail trestle and south of the Coastal Rail Trail parking lot at the end of the new trail bridge adjacent to Sumner Ave. Segment 14 is considered on the inland-side of the Coastal Rail Trail within Sumner Avenue right-of-way. Segment 14 remains on the inland-side of the rail tracks between Sumner Ave and the railroad right-of-way and ends at the Seascape Park parking lot.

Segment 14 Description

Segment 14 starts at the end of the Segment 13 bridge adjacent to the Hidden Beach rail trestle and continues south along the coastal side of the Sumner Avenue right-of-way. Due to the topography along this segment and its proximity to the coast small retaining walls may be required on the inland-side of the trail to secure the uphill slope along the Sumner Avenue corridor. The proposed trail will maintain an inland-side orientation of the tracks along Sumner Avenue, including an at-grade street crossing of the trail at Clubhouse Drive intersection where improvements will be implemented to allow for a safe crossing for bicyclists and pedestrians. These proposed traffic improvements include modifying traffic lane striping, implementation of new railroad vehicular gates with flashing light warning signal, pedestrian flashing lights and gates, signage, and a swing gate for emergency access. This trail alignment option maintains a right-of-way orientation along Sumner Avenue towards an at-grade signaled street crossing Sumner Avenue and Seascape

Boulevard. The current at-grade crossing will need to be modified by traffic safety treatments that include either active (e.g. flashing light signal, moving gates) or passive warning devices (e.g. railroad crossbucks and signage). This crossing will require relocating electrical control boxes and other utilities to accommodate the proposed trail. Segment 14 terminates on the inland-side of the rail tracks at an existing non-signalized, at-grade rail crossing inland of the Seascapes Park public parking lot. This location also provides the proposed Coastal Rail Trail with existing trailhead parking, staging area access, and a good concluding point for segmented implementation phasing.

Segment 14 Proposed Improvements

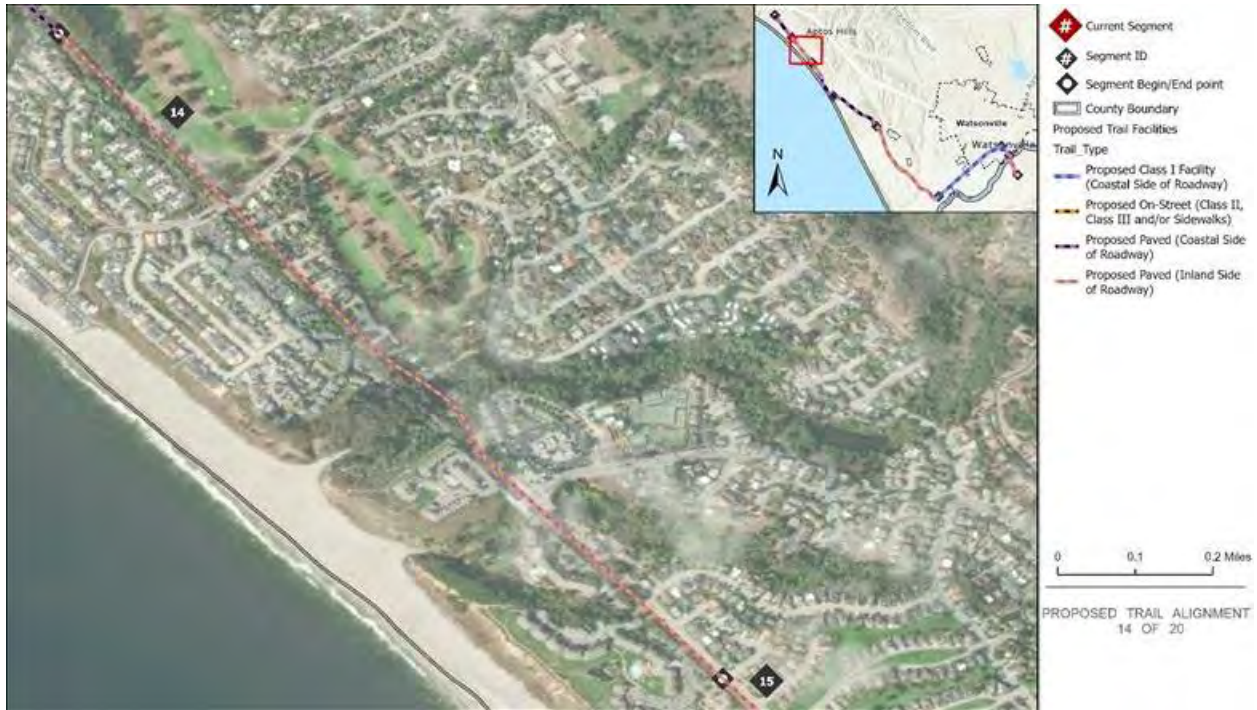
- 1.13 miles (5,967 LF) multi-use paved path (Class I) along the inland rail right-of-way
- Two (2) at-grade (street-level) road crossings (Clubhouse Drive, Seascapes Blvd) with proposed traffic safety improvements including physical and visual enhancements
- One (1) pre-engineered bike/pedestrian bridge, spanning a distance of four-hundred (400 ft) feet using three (3) different span lengths. Span lengths shall include one (1) eight (80 ft) foot span, one (1) two-hundred and forty (240 ft) foot span, and one (1) eighty (80) foot span.
- Fencing to separate Segment 14 trail from the rail alignment withing this same segment.

Segment 14 - Cost

Total Segment cost is \$83,100,000 in 2026 dollars.

See Appendix A for additional details

Segment 14 – Map



Segment 14 – Cross Section



Segment 15

Length 1.37 miles (7,256 LF) - Seascapes Park to Manresa State Beach Railroad Bridge at San Andreas Road

Segment 15 Boundary Determination

Segment 15 starts at the northern limit of the Seascapes Park with a portion along Sumner Avenue until the end and of the street and back into the railroad right-of-way to cross the railroad bridge over San Andreas Road near Manresa State Beach. This segment poses

engineering, grading, and grade-separated crossing challenges. The location of this segment lends to significant multi-use connectivity with safe accessible trail possibilities to access the nearby California Coastal Trail.

Segment 15 Description

As previously noted, Segment 15 starts right past the entrance of Seascapes Park on the coastal side of Sumner Avenue and continues down the road adjacent to the railroad right-of-way on the inland-side of the tracks. Sumner Avenue dead ends to the south past Seascapes Park, near Camp St. Francis, where the proposed trail alignment continues past the end of Sumner Avenue back into the railroad right-of-way on the inland-side of the tracks, bordering a short stretch of agricultural land. Continuing along the inland side of the tracks the alignment then crosses to the coastal side of the tracks at the Camino Al Mar at-grade crossing, approximately 2000 feet south of the end of Sumner Avenue. The proposed trail continues southward along the coastal side of the tracks where it crosses the gulch at La Selva Beach on a new trail bridge adjacent to the existing rail bridge.

The proposed trail bridge crossing at the La Selva Beach may require the following options for the crossing:

1. A prefabricated truss bike/pedestrian bridge on the coastal side of the existing rail trestle, with a landing near the south bridge abutment.
2. A concrete arch bridge bike/pedestrian structure adjacent to the existing rail trestle, with a landing near the south bridge abutment.

The trail alignment continues down the coast from the La Selva Beach crossing along the coastal-side of the rail corridor. The proposed trail stays on the coastal-side and when it reaches the end of the Manresa bluffs, crosses an existing private at-grade driveway to continue along the coastal-side of the tracks. Once the proposed trail is on the coastal side of the tracks, the physical constraints vary from steep slopes, private roadways, adjacent private property lines and narrow railroad right-of-way. To accommodate the trail within the corridor segments of the track will need to be reconstructed to a location further inland, away from the trail. In addition, walls will be needed to support the trail and railroad in these locations due to the narrow railroad corridor. Trail Segment 15 terminates just east of San Andreas Road where a new prefabricated bridge will be constructed over San Andreas Road.

Segment 15 Proposed Improvements

- 1.37 miles of multi-use paved path (Class I) along the inland rail right-of-way

- Two (2) private at-grade road crossings (Sumner Avenue, Camino Al Mar) and two (2) additional private crossings
- One (1) pre-engineered trail bridge crossing at San Andreas Road, spanning a distance of one hundred and eighty (180 ft) foot span at San Andreas Road
- One (1) pre-engineered trail bridge crossing at La Selva Beach, spanning a distance of four-hundred (400 ft) using three (3) different span lengths. Span lengths shall include three (3) fifty (50 ft) feet spans on each side of the one-hundred eighty (180 ft) feet main span. The one-hundred eighty (180 ft) main span has two alternatives, either a prefabricated truss or an arch span.
- 4800 ft of track realignment and reconstruction and retaining walls
- One (1) rail at-grade crossing (Camino Al Mar)
- Fencing to separate the trail segment from the rail alignment within the same segment.

Segment 15 - Cost

Total Segment cost is \$74,400,000 in 2026 dollars.

See Appendix A for additional details

Segment 15 – Map



Segment 16

Length 1.79 miles (9,475 LF) down the coast from Railroad Bridge abutment at San Andreas Road to Buena Vista Drive

Segment 16 Boundary Determination

Beginning at the southernmost side of the existing rail bridge crossing of San Andreas Road at Manresa State Beach, Segment 16 runs along the rail corridor and adjacent to the San Andreas Road/Pacific Bike Route to the railroad grade crossing at Buena Vista Drive. The trail continues moving down the San Andreas Road corridor as the rail line heads inland toward Watsonville. Segment 16 sees the trail move away from direct beach access and towards greater access to regional transit lines, commercial land uses, and denser residential areas.

Segment 16 Description

As previously stated, the beginning of Segment 16 starts at the southern end of the San Andreas Road rail bridge where the rail line begins to diverge from the coastal edge and heads inland toward Watsonville.

The trail then continues within the railroad right-of-way on the coastal side of the tracks, where the trail will pass farm land, forested areas, and various residential/recreational land uses towards Spring Valley Road. At Spring Valley road, the trail crosses the roadway at the at-grade railroad crossing as it continues southward within the railroad right-of-way along the coastal-side of the tracks. In the areas between the beginning of segment 16 and Spring Valley Road it is anticipated that the tracks will need to be reconstructed to a location further inland to accommodate the trail within the railroad right-of-way. After the Spring Valley Road crossing, the trail passes large parcels of farm/agricultural land and, notably, the Ellicott Slough National Wildlife Refuge area. This ecologically diverse trail section is also adjacent to the Santa Cruz Long-Toed Salamander Ecological Reserve on lands owned by the U.S. Fish and Wildlife Service, California Department of Fish and Game, and private land dedicated in conservation easements. Past the Ellicott Slough, the trail continues down the coastal side of the railroad right-of-way where it crosses at the Peaceful Valley Road at-grade railroad crossing continuing on the coastal-side of the track before intersecting with Buena Vista Drive and San Andreas Road. Both of the crossings at Peaceful Valley Road and Buena Vista Drive will have challenges due to sightline and elevation differences between the roads, trail, and rail line. The trail will end south of Buena Vista Drive and San Andreas Road intersection.

Segment 16 Proposed Improvements

- 1.79 miles multi-use paved path (Class I) along the rail right-of-way
- 12,700 ft of track realignment and reconstruction and 4800 ft of retaining walls
- Two (2) at-grade road crossings (Spring Valley Road, Peaceful Valley Road)
- One (1) at-grade rail crossing (Spring Valley Road)
- Fencing to separate trail from the rail alignment within this same segment.

Segment 16 - Cost

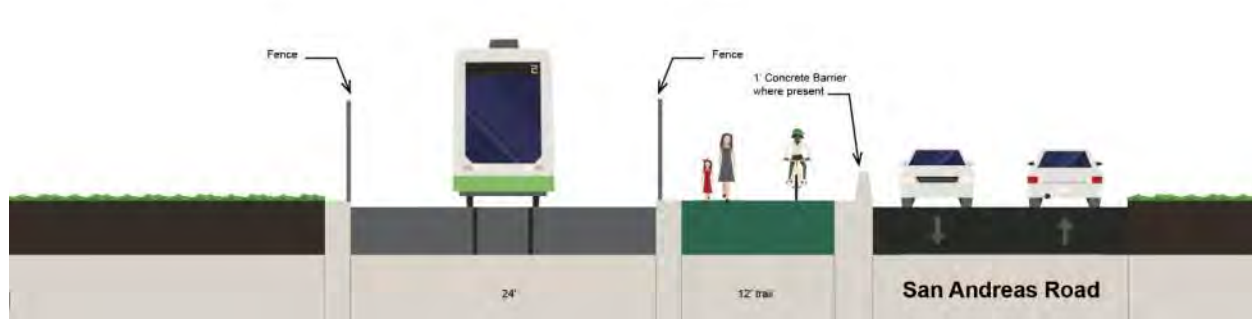
Total Segment cost is \$144,500,000 in 2026 dollars.

See Appendix A for additional details

Segment 16 – Map



Segment 16 - Cross Section



Segment 17B – Watsonville Slough

Length: 3.49 miles (18,008 LF) – San Andreas Road from Buena Vista Drive to West Beach Street, then continuing eastbound on West Beach Street to Thurwachter Road.

Segment 17B Boundary Determination

The boundary is determined by the intersection of the end of Segment 16 at Buena Vista Drive and San Andreas Road and proceeding downcoast to West Beach Street via a new 12 foot wide San Andreas Road Class I Bikeway to the intersection of West Beach Street and Thurwachter Road.

Segment 17B Description

Starting from just south of the intersection crossing at Buena Vista Drive and San Andreas Road, the project would construct a new 12 foot wide Class I Bikeway along the eastside of San Andreas Road to provide connectivity to West Beach Street. The existing Intersection at San Andreas Road and West Beach Street will be realigned and signalized with pedestrian and bicycle signals. The trail will then continue northeast, on the south side of West Beach Street, to the intersection of West Beach Street and Thurwachter Road. This segment of San Andreas Road serves as the Pacific Coast Bicycle Route which continues down the coast via Thurwachter Road to Monterey County. The Class I Bikeway will be separated by concrete barriers except at intersections and driveways to allow traffic flow and access to adjacent properties. At Thurwachter Road the trail will connect to Trail Segment 18B to allow for trail access into Downtown Watsonville.

In the area between Buena Vista Drive and West Beach Street there are two Segment 17 alternatives for consideration. Alternative A provides for a trail along the railroad corridor,

through Harkins Slough, along the agricultural land adjacent to the railroad right of way. Alternative A has substantial environmental challenges in Gallagher and Harkins Sloughs as well as right of way impacts to the adjacent agricultural land. In addition, access and connectivity throughout this segment is limited due to the slough and agricultural land constraints. Constructing a trail through this area will be challenging and costly. Due to these challenges it was decided during the ZEPRT project to further investigate Alternative B along San Andreas Road. Alternative B provides for better connectivity along San Andreas Road to transit and to the coastal points of interest. In the end Alternative B was selected as the preferred alternative to provide a feasible connection throughout the area minimizes environmental impacts.

Segment 17B proposed improvements include:

- 3.2 miles – Class I Bikeway along the eastside of San Andreas Road to West Beach Street
- 2.58 miles – Concrete barriers between the Class I Bikeway along San Andreas Road to West Beach Street
- 0.17 miles - Class I Bikeway along southside of West Beach Street to Thurwachter Road
- 0.17 miles - Concrete barriers between the Class I Bikeway on West Beach Street to Thurwachter Road
- 0.02 miles – New prefabricated bridge on San Andreas Road over the Watsonville Slough
- 8.25 Acres of ROW Acquisition
- Reconstruction San Andreas Road and West Beach Street, including signalization and Class II Bikeway connection to westbound West Beach Street.

Segment 17B - Watsonville Slough - Cost

Total Segment cost is \$71,500,000 in 2026 dollars.

See Appendix A for additional details

Segment 17B - Watsonville Slough - Map



Segment 17B – Watsonville Slough – Cross Sections



Segment 18A – West Beach Street

Length: 2.72 miles (14,361 LF) - Thurwachter Road to Rodriguez Street

Segment 18A Boundary Determination

Segment 18A starts at the intersection on West Beach Street and Thurwachter Road and continues inland to Rodriguez Street. This segment connects Downtown Watsonville to the existing trail network in the Watsonville Slough Wetlands.

Segment 18A Description

Segment 18A begins at Thurwachter Road, and travels east-west along West Beach Street adjacent to large parcels of agricultural and municipal land uses, such as the Watsonville Wastewater Plant, connecting to Downtown Watsonville. This trail segment will require extensive coordination with stakeholders such as the Caltrans, Santa Cruz County and City of Watsonville, and the local farm owners and operators that border this segment.

Along this segment two options were investigated; Option 1 to provide a Class I facility immediately adjacent to and off the edge of travelway along the south side of the existing West Beach Street and Option 2 a Class I facility along West Beach Street, south of the existing open drainage ditch, along the existing frontage agricultural farm field roads. The Option 1 alignment will require the reconstruction of a portion of Beach Street as well as extensive utility relocations due to an existing overhead powerline and a recycled waterline and drainage modifications to enclose the existing open ditch in a large culvert with a series of inlets to drain runoff from Beach Street. Option 2 proposes to put the Class I facilities just south of West Beach Street along the existing frontage agriculture field roads. This option will result in additional right-of-way needs but will limit the reconstruction of West Beach Street as well as impacts to utilities and drainage.

As previously stated, this segment begins at the intersection of West Beach Street and Thurwachter Road, and will consist of constructing a new 12 foot wide Class I facility that continues on the southside of West Beach Street, crossing under the Highway 1 bridge structure near Lee Road into Watsonville to Industrial Road where it transitions to a Class IV Bikeway until it ends at the intersection of West Beach Street and Rodriguez Street. Except for access points and roadways, the Class I Bikeway will be protected by concrete barriers between Thurwachter Road and Industrial Lane and along the Class IV bikeway from Industrial Lane to Walker Street vertical plastic delineators will be used instead of the concrete barriers. From Industrial Lane to Walker Street, parking will be provided on the side of Beach Street between the travel lanes and bikeway. Segment 18 proposed improvements include:

- 1.96 miles - Class I Bikeway along southside of West Beach Street
- 0.76 miles – Class IV Bikeway along southside of West Beach Street
- 1.71 miles - Concrete barriers between the Class I Bikeway and West Beach Street
- 0.36 miles - Installation of Plastic Delineator Bollards between Bikeway and West Beach Street
- Rail Crossing improvements at Walker Street

Segment 18A – West Beach Street - Cost

Total Segment cost of option 1 is \$83,100,000 in 2026 dollars.

Total Segment cost of option 2 is \$36,000,000 in 2026 dollars.

See Appendix A for additional details

Segment 18A - West Beach Street - Maps



Segment 18A - West Beach Street - Cross Sections

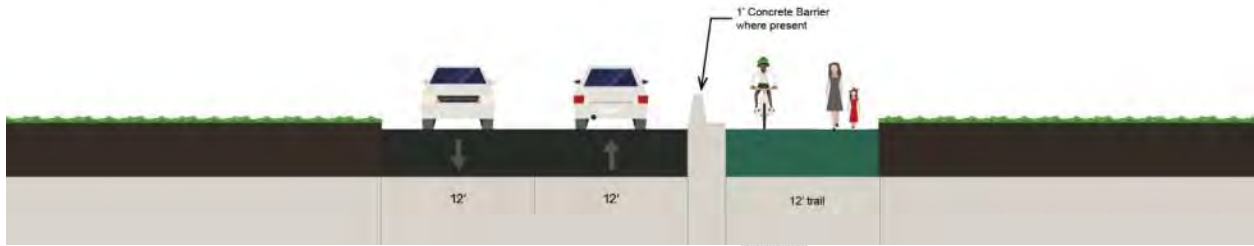


Figure 1 Beach Street (Eastbound) East of San Andreas Road to West of Lee Road

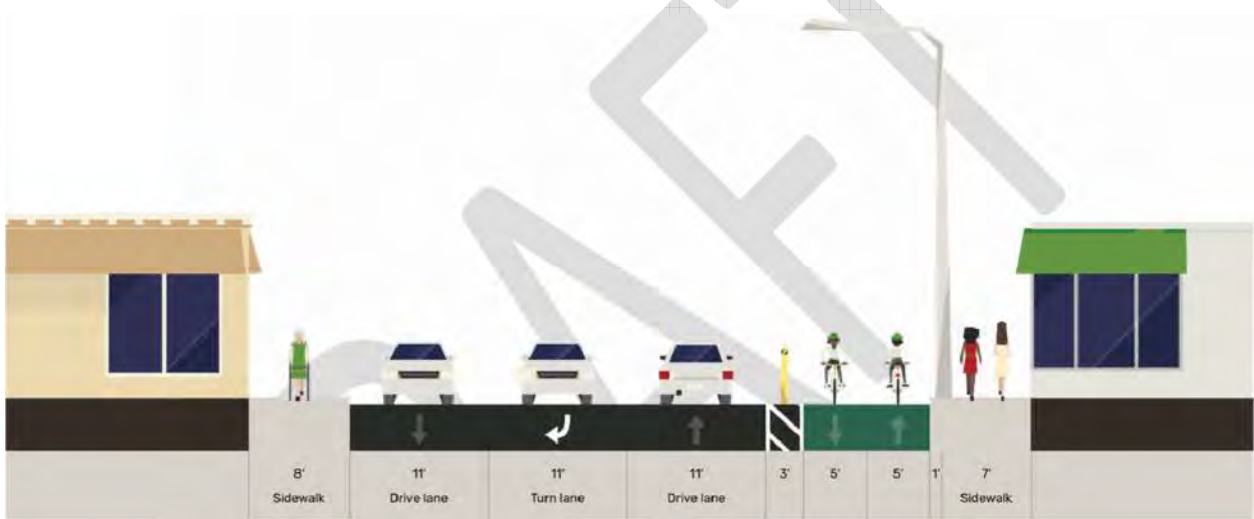


Figure 2 Beach Street (Eastbound) East of Industrial Rd to Walker Street

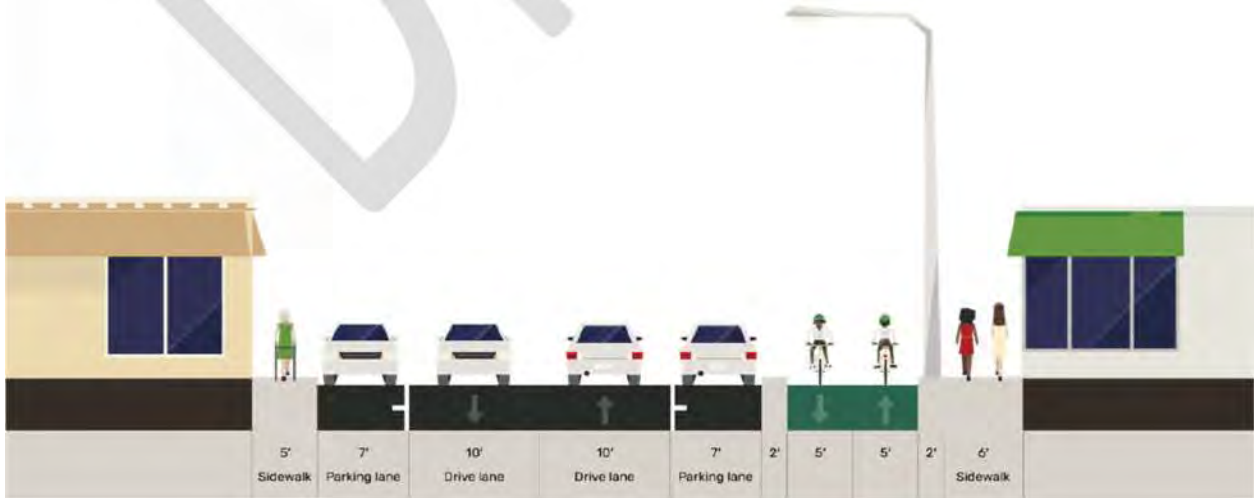


Figure 3 Beach Street (Eastbound) East of Walker Street to Rodriguez Street - Proposed

Segment 19 – West Beach/Rodriguez Street, City of Watsonville

Length: 0.41 miles (2,200 LF) – Along the west side of Rodriguez Street from Beach Street to West Front and the North Bank of the Pajaro River.

Segment 19 Boundary Determination

Segment 19 along Rodriguez Street consists of a Class IV protected Bikeway. It begins at the intersection of West Beach Street and Rodriguez and travels for approximately 4 city blocks along Rodriguez Street where it terminates at the North Bank of the Pajaro River, between 24 and 25 West Front Street, where it will connect to the Trail Segment 20 pedestrian/bike bridge.

Segment 19 Description

As part of the ZEPRT project alternative alignments for Segment 19 were investigated. The original MBSST alignment along Walker St was determined to be challenging to implement due to the railroad, 2-way traffic movements and adjacent commercial businesses and truck traffic. The Walker Street roadway section was reviewed to determine if all modes could exist within the limits while providing for access to adjacent properties and it was determined that was not feasible. Through stakeholder coordination it was determined the best alternative solution is to route Segment 19 along Rodriguez St due to the existing bike facilities, lower traffic volume and neighboring businesses that support foot traffic.

Segment 19 will be part of Watsonville's bike facility network. Segment 19 starts as a 10 foot wide protected Class IV bikeway at the intersection of West Beach Street and Rodriguez Street traveling down the westside of the Rodriguez street with either concrete barriers or vertical plastic delineators as protection depending on geometry. This section will require a signal modifications at the intersection of Rodriguez Street and West Riverside Drive. This section ends at a proposed pedestrian/bike bridge that is to be constructed over the Pajaro River. Segment 19 proposed improvements include:

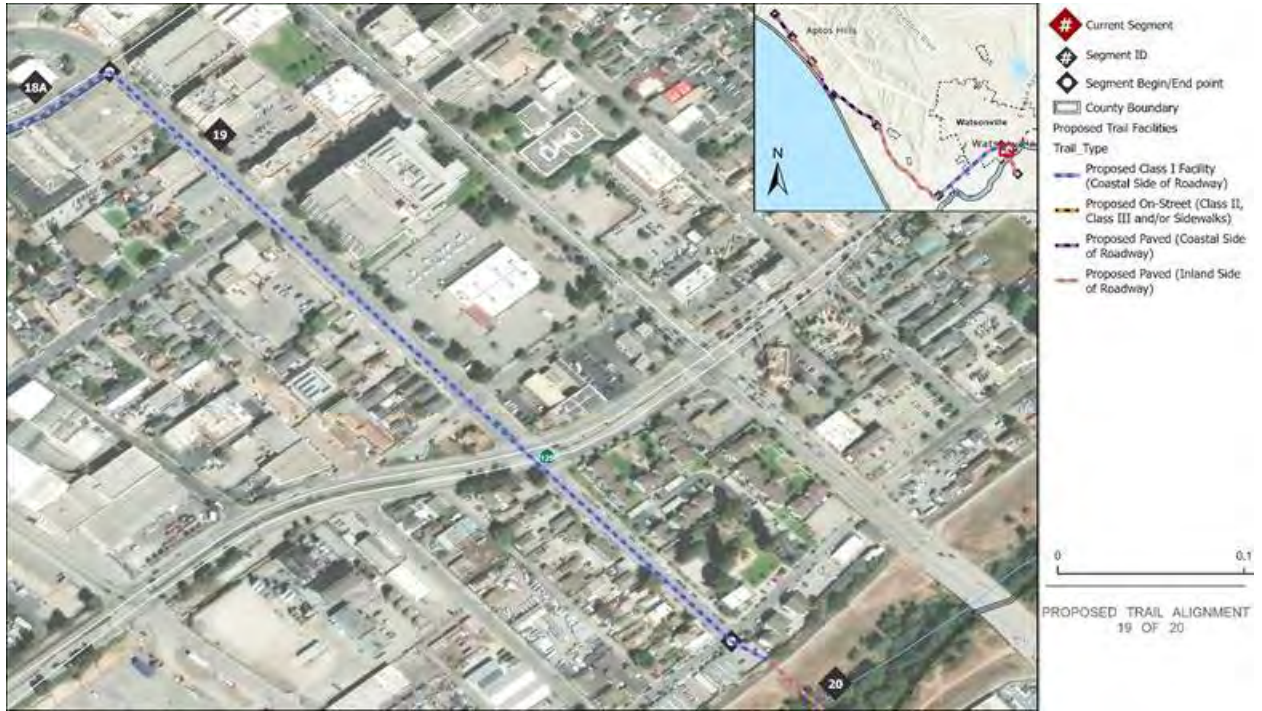
- 0.40 miles - Class IV 2-way Protected Bikeway along Rodriguez Street
- New Signal at the intersection of Rodriguez Street and West Riverside Drive

Segment 19 - West Beach/Rodriguez Street, City of Watsonville – Cost

Total Segment cost is \$3,800,000 in 2026 dollars.

See Appendix A for additional details

Segment 19 - West Beach/Rodriguez Street, City of Watsonville – Map



Segment 19 - West Beach/Rodriguez Street, City of Watsonville – Cross sections



Figure 4 Rodriguez (North) going Eastbound- Proposed

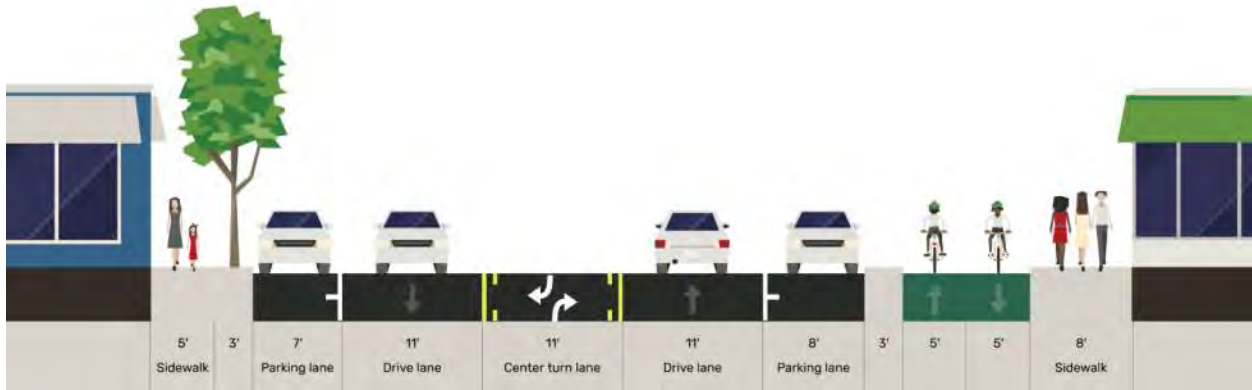


Figure 5 Rodriguez (Middle) going Eastbound- Proposed

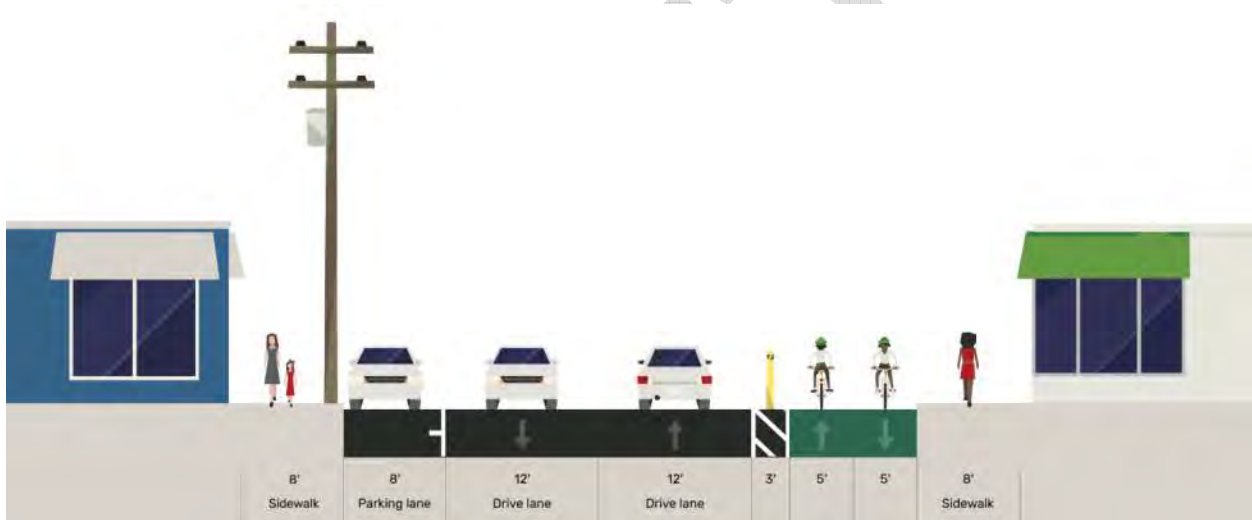


Figure 6 Rodriguez (South) going Eastbound- Proposed

Segment 20 - Pajaro River

Length: 0.83mile (4,342.5LF) - North Bank of the Pajaro River to Salinas Road

Segment 20 Boundary Determination

Segment 20 is the last segment of the trail starting at the pedestrian/bike bridge crossing of the Pajaro River at Rodriguez Street and West Front Street and concluding where the rail line meets Salinas Road, just south of Railroad Avenue.

Segment 20 Description

This segment is a short connection that includes a new pre-engineered bridge crossing at the Pajaro River. This segment will need to construct a new switchback bike and pedestrian ramp to climb the elevation from street level at the intersection of Rodriguez Street and

West Front Street to the North Bank of the Pajaro River levee and cross a new pedestrian/bike bridge that will touchdown near San Juan Road and the entrance to the Pajaro Park facility. It was determined during the ZEPRT project that constructing a new trail bridge immediately adjacent to the existing rail bridge would be difficult and costly due to right-of-way constraints and construction challenges. Since a new trail bridge was necessary for this segment it was decided to move it to align with the end of Rodriguez St to provide a direct connection across the Pajaro River. Once over the river the trail will provide regional connection to the existing and proposed Pajaro River levee-top trail in Watsonville where will continue towards the coast along the levee-top road and back into the railroad right-of-way. The proposed rail trail alignment will then continue along the inland side of the tracks, just south of the baseball field, connecting adjacent neighborhoods and schools and ending at the Salinas Road at-grade railroad crossing where the SCCRTC railroad right-of-way ends. This terminus at Salinas Road is planned to someday continue inland from Salinas Road to the future Transportation Agency of Monterey County (TAMC) Pajaro train station on Salinas Road and a regional connection inland of the county line toward San Benito County and the city of Gilroy. The terminus of Segment 20 connects to the Monterey County bike path along Salinas Road to the Pajaro Train Station, as identified by the TAMC Pajaro Train Station Project.

The new pedestrian/bike bridge will provide a high-quality, safe crossing of the Pajaro River from Watsonville to the proposed levee top trail. These links are regionally important as the levee-top trail proposed by the City of Watsonville Trails and Greenways Master Plan will provide coastal beach access from the city of Watsonville, as well as access to the Coastal Rail Trail around the southern reach of the Monterey Bay.

Segment 20 proposed improvements include:

- 0.83 miles - Multi-use paved path (Class I) along the south bank of the Pajaro River Levee, from southern landing of the pedestrian/bike bridge to just inland of the railroad tracks
- 0.61 miles - Multi-use paved path (Class I) on the inland side of the railroad tracks to the terminus at Salinas Road
- 0.61 miles - Fencing between the Class I facility and the Santa Cruz Branch Rail Line
- One (1) switch-back ramp to connect Rodriguez Street to the new bridge on the North Bank of the Pajaro River.
- One (1) pedestrian/bike bridge at the Pajaro River crossing, 462 foot span

Segment 20 – Pajaro River – Cost

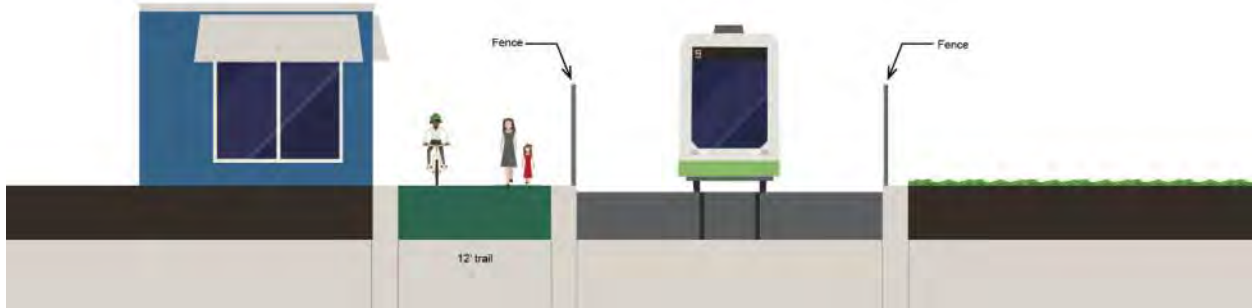
Total Segment cost is \$26,400,000 in 2026 dollars.

See Appendix A for additional details

Segment 20 - Pajaro River – Map



Segment 20 - Pajaro River – Cross Section



Appendices

DRAFT

A – Trail Segment Conceptual Cost Estimates

Basis of Estimate

The estimating approach is based on an AACE Class 4 estimate. Quantities were developed by the design team using roll plots and typical sections using parametric values such as lineal feet or square feet of an item. The quantities were then assigned as bid items to specific types of work such as signage, pavement, earthwork, structures, and trackwork. Items with insufficient detail in the drawings but still included in the scope were developed using a parametric quantity or as a lump sum allowance. General condition items such as mobilization, quality control, traffic control, survey, and temporary erosion control are based on a percentage of total construction costs. Right of way (ROW) items consist of acquisition costs, temporary construction easements and utility relocation.

Pricing for the bid items are derived from historical unit prices from recent transit and roadway projects and based on engineer experience. Pricing for unquantified items is set as allowances and lump sum and based on elements of work from similar projects to allow for sufficient costs to be set aside as the project scope develops. Due to the conceptual level of the design a 40% contingency was added to the construction and ROW to account for variances in pricing, quantities, project unknowns, and possible design adjustments in scope that could occur as the project develops. The costs for construction items, ROW, and contingency were subtotaled and rounded to develop the “Hard Cost” in 2026 dollars.

Soft Costs for design, administration and right of way acquisition were determined by applying an allocated percentage to the hard cost for each soft cost category. Preliminary engineering and environmental was assumed to be 15% of the hard cost subcategory. Final design was assumed to be 12% of the hard cost subcategory. Construction administration was assumed to be 15% of the hard cost subcategory.

Escalation was calculated at 4% annually of the Hard and Soft costs to the anticipated start Year of Expenditure (YOE) of 2035.

PLANNING LEVEL COST ESTIMATE

3/25/2026

Coastal Rail Trail Segment 13

Roadway Items:	Quantity	Unit	Unit Cost	Item Total	Total
Mobilization	1	LS	\$ 1,920,000	\$ 1,920,000	
Traffic Control	1	LS	\$ 549,000	\$ 549,000	
Temporary Erosion Control	1	LS	\$ 206,000	\$ 206,000	
Preconstruction Survey	1	LS	\$ 206,000	\$ 206,000	
Quality Control	1	LS	\$ 165,000	\$ 165,000	
Unquantified Removals	1	LS	\$ 138,000	\$ 138,000	
Clearing and Grubbing	2	ACRE	\$ 10,200	\$ 25,000	
Track Guideway Excavation	30,499	CY	\$ 102	\$ 3,111,000	
Finish Subgrade	187,934	SF	\$ 1	\$ 245,000	
Track Shift Excavation	28,081	CY	\$ 102	\$ 2,865,000	
Track Guideway Embankment	4,038	CY	\$ 70	\$ 283,000	
Track Shift Embankment	3,080	CY	\$ 70	\$ 216,000	
Underdrain - Trail	3,759	LF	\$ 110	\$ 414,000	
Unquantified Drainage	1	LS	\$ 206,000	\$ 206,000	
Class 2 AB - Trail	1,392	CY	\$ 90	\$ 126,000	
HMA (Trail)	1,669	TON	\$ 220	\$ 368,000	
Pavement Markings - Roadway & Trail	3,759	LF	\$ 10	\$ 38,000	
Signing - Unquantified	5,997	LS	\$ 10	\$ 60,000	
Fence - Trail	7,517	LF	\$ 40	\$ 301,000	
Unquantified Landscaping	2	ACRE	\$ 4,500	\$ 11,000	
Top Soil	3,480	CY	\$ 83	\$ 289,000	
Retaining Wall	7,200	SF	\$ 200	\$ 1,440,000	
Retaining Walls Track Shift	26,242	SF	\$ 210	\$ 5,511,000	
Ballast (to protect rail during wall install)	3,481	CY	\$ 130	\$ 453,000	
Existing Track/Guidway Demo	3,759	TF	\$ 389	\$ 1,463,000	
Track Shift	4,900	TF	\$ 186	\$ 912,000	
New Track	1,300	TF	\$ 280	\$ 364,000	
Unquantified Environmental Mitigation	224,922	DOL	\$ 10	\$ 2,250,000	
Unquantified Hazardous Materials	14,645	CY	\$ 390	\$ 5,712,000	
Contingency (40%)	1	LS	\$ 11,939,000	\$ 11,939,000	
Roadway Subtotal				\$	41,790,000
Right of Way Items:	Quantity	Unit	Unit Cost	Item Total	Total
Acquisition costs	-	SF	\$ -	\$ -	
TCE	10,000	SF	\$ 30	\$ 300,000	
Utility Relocation (Est)	-	LS	\$ -	\$ -	
ROW Contingency (40%)	1	LS	\$ 120,000	\$ 120,000	
Right of Way Subtotal				\$	420,000
Subtotal "Hard Costs" (year 2026)				\$	42,210,000
Cost Escalation (4% per year)			Subtotal "Hard Costs"	Escalation	Total
Future Costs (Year 2030)			\$ 42,210,000	\$ 7,170,000	\$ 49,400,000
Future Costs (Year 2035)			\$ 42,210,000	\$ 17,870,000	\$ 60,100,000
Future Costs (Year 2040)			\$ 42,210,000	\$ 30,890,000	\$ 73,100,000
Soft Costs ²	Quantity	Unit	Unit Cost	Item Total	Total
Preliminary Eng/Envir (15%)	1	LS	\$ 6,269,000	\$ 6,269,000	
Final Design (12%)	1	LS	\$ 5,015,000	\$ 5,015,000	
Construction Administration (15%)	1	LS	\$ 6,269,000	\$ 6,269,000	
R/W Engineering/Acquisition (20%)	1	LS	\$ 84,000	\$ 84,000	
Subtotal "Soft Costs" (year 2026)					\$ 17,640,000
Escalated Soft Costs (Year 2035)					\$ 25,110,000
Grand Total (2026)				\$	59,900,000
Grand Total YOY (2035)				\$	85,300,000

1. Soft cost is percentage of Roadway Items (2026 dollars) except R/W Engineering which is 20% of R/W Items and then escalated to 2035.
 2. Costs are estimated in 2026 dollars and escalated assuming the earliest construction occurs is 2035.

PLANNING LEVEL COST ESTIMATE

3/25/2026

<p>Coastal Rail Trail Segment 14</p>

Roadway Items:	Quantity	Unit	Unit Cost	Item Total	Total
Mobilization	1	LS	\$ 2,897,000	\$ 2,897,000	
Traffic Control	1	LS	\$ 828,000	\$ 828,000	
Temporary Erosion Control	1	LS	\$ 311,000	\$ 311,000	
Preconstruction Survey	1	LS	\$ 311,000	\$ 311,000	
Quality Control	1	LS	\$ 249,000	\$ 249,000	
Unquantified Removals	1	LS	\$ 207,000	\$ 207,000	
Clearing and Grubbing	4	ACRE	\$ 10,200	\$ 38,000	
Track Guideway Excavation	46,310	CY	\$ 102	\$ 4,724,000	
Finish Subgrade	428,033	SF	\$ 1	\$ 557,000	
Track Shift Excavation	42,199	CY	\$ 102	\$ 4,305,000	
Track Guideway Embankment	6,132	CY	\$ 70	\$ 430,000	
Track Shift Embankment	2,234	CY	\$ 70	\$ 157,000	
Underdrain - Trail	5,707	LF	\$ 110	\$ 628,000	
Unquantified Drainage	1	LS	\$ 311,000	\$ 311,000	
Class 2 AB - Trail	2,114	CY	\$ 90	\$ 191,000	
HMA (Trail)	2,534	TON	\$ 220	\$ 558,000	
Pavement Markings - Roadway & Trail	5,707	LF	\$ 10	\$ 58,000	
Pavements Messages - Intersections	2	EA	\$ 10,200	\$ 21,000	
Signing - Unquantified	9,106	LS	\$ 10	\$ 92,000	
Fence - Trail	11,414	LF	\$ 40	\$ 457,000	
Unquantified Landscaping	4	ACRE	\$ 4,500	\$ 17,000	
Top Soil	7,927	CY	\$ 90	\$ 714,000	
Retaining Walls Track Shift	51,226	SF	\$ 210	\$ 10,758,000	
Ballast (to protect rail during wall install)	4,222	CY	\$ 130	\$ 549,000	
Existing Track/Guideway Demo	5,707	TF	\$ 389	\$ 2,221,000	
Track Shift	6,900	TF	\$ 186	\$ 1,284,000	
Unquantified Environmental Mitigation	430,184	DOL	\$ 1	\$ 431,000	
Unquantified Hazardous Materials	22,127	CY	\$ 382	\$ 8,453,000	
Contingency (40%)	1	LS	\$ 16,703,000	\$ 16,703,000	
Roadway Subtotal				\$	58,460,000

Right of Way Items:	Quantity	Unit	Unit Cost	Item Total	Total
Acquisition costs	-	SF	\$ -	\$ -	
TCE	-	SF	\$ -	\$ -	
Utility Relocation (Est)	-	LS	\$ -	\$ -	
ROW Contingency (40%)	-	LS	\$ -	\$ -	
Right of Way Subtotal				\$	-

Subtotal "Hard Costs" (year 2026) **\$ 58,460,000**

Cost Escalation (4% per year)	Subtotal "Hard Costs"	Escalation	Total
Future Costs (Year 2030)	\$ 58,460,000	\$ 9,930,000	\$ 68,400,000
Future Costs (Year 2035)	\$ 58,460,000	\$ 24,750,000	\$ 83,300,000
Future Costs (Year 2040)	\$ 58,460,000	\$ 42,780,000	\$ 101,300,000

Soft Costs ²	Quantity	Unit	Unit Cost	Item Total	Total
Preliminary Eng/Envir (15%)	1	LS	\$ 8,769,000	\$ 8,769,000	
Final Design (12%)	1	LS	\$ 7,016,000	\$ 7,016,000	
Construction Administration (15%)	1	LS	\$ 8,769,000	\$ 8,769,000	
R/W Engineering/Acquisition (20%)	-	LS	\$ -	\$ -	
Subtotal "Soft Costs" (year 2026)				\$	24,560,000
Escalated Soft Costs (Year 2035)				\$	34,960,000

Grand Total (2026)	\$ 83,100,000
Grand Total YOY (2035)	\$ 118,300,000

1. Soft cost is percentage of Roadway Items (2026 dollars) except R/W Engineering which is 20% of R/W Items and then escalated to 2035.
 2. Costs are estimated in 2026 dollars and escalated assuming the earliest construction occurs is 2035.

PLANNING LEVEL COST ESTIMATE

3/25/2026

Coastal Rail Trail Segment 15

Roadway Items:	Quantity	Unit	Unit Cost	Item Total	Total
Mobilization	1	LS	\$ 2,569,000	\$ 2,569,000	
Traffic Control	1	LS	\$ 734,000	\$ 734,000	
Temporary Erosion Control	1	LS	\$ 276,000	\$ 276,000	
Preconstruction Survey	1	LS	\$ 276,000	\$ 276,000	
Quality Control	1	LS	\$ 221,000	\$ 221,000	
Unquantified Removals	1	LS	\$ 184,000	\$ 184,000	
Clearing and Grubbing	4	ACRE	\$ 10,200	\$ 40,000	
Track Guideway Excavation	48,009	CY	\$ 102	\$ 4,897,000	
Finish Subgrade	212,994	SF	\$ 1	\$ 277,000	
Track Shift Excavation	45,943	CY	\$ 102	\$ 4,687,000	
Embankment for Bridge	4,000	CY	\$ 90	\$ 360,000	
Track Guideway Embankment	6,357	CY	\$ 70	\$ 445,000	
Track Shift Embankment	5,183	CY	\$ 70	\$ 363,000	
Underdrain - Trail	5,917	LF	\$ 110	\$ 651,000	
Unquantified Drainage	1	LS	\$ 276,000	\$ 276,000	
Class 2 AB - Trail	2,191	CY	\$ 90	\$ 198,000	
HMA (Trail)	2,627	TON	\$ 220	\$ 578,000	
Pavement Markings - Roadway & Trail	5,917	LF	\$ 10	\$ 60,000	
Signing - Unquantified	9,440	LS	\$ 10	\$ 95,000	
Fence - Trail	11,833	LF	\$ 40	\$ 474,000	
Unquantified Landscaping	4	ACRE	\$ 4,500	\$ 18,000	
Top Soil	4,338	CY	\$ 83	\$ 361,000	
La Selva Bluffs Bridge	5,760	SF	\$ 610	\$ 3,514,000	
Retaining Walls Track Shift	13,118	SF	\$ 210	\$ 2,755,000	
Ballast (to protect rail during wall install)	1,852	CY	\$ 130	\$ 241,000	
Existing Track/Guideway Demo	5,917	TF	\$ 389	\$ 2,302,000	
Track Shift	3,200	TF	\$ 186	\$ 596,000	
New Track	1,600	TF	\$ 280	\$ 448,000	
Unquantified Environmental Mitigation	145,731	DOL	\$ 1	\$ 146,000	
Unquantified Hazardous Materials	23,488	CY	\$ 390	\$ 9,161,000	
Contingency (40%)	1	LS	\$ 14,882,000	\$ 14,882,000	
Roadway Subtotal				\$	52,090,000
Right of Way Items:	Quantity	Unit	Unit Cost	Item Total	Total
Acquisition costs	-	SF	\$ -	\$ -	
TCE	7,500	SF	\$ 30	\$ 225,000	
Utility Relocation (Est)	-	LS	\$ -	\$ -	
ROW Contingency (40%)	1	LS	\$ 90,000	\$ 90,000	
Right of Way Subtotal				\$	320,000
Subtotal "Hard Costs" (year 2026)				\$	52,410,000
Cost Escalation (4% per year)			Subtotal "Hard Costs"	Escalation	Total
Future Costs (Year 2030)			\$ 52,410,000	\$ 8,910,000	\$ 61,400,000
Future Costs (Year 2035)			\$ 52,410,000	\$ 22,190,000	\$ 74,600,000
Future Costs (Year 2040)			\$ 52,410,000	\$ 38,350,000	\$ 90,800,000
Soft Costs ²	Quantity	Unit	Unit Cost	Item Total	Total
Preliminary Eng/Envir (15%)	1	LS	\$ 7,814,000	\$ 7,814,000	
Final Design (12%)	1	LS	\$ 6,251,000	\$ 6,251,000	
Construction Administration (15%)	1	LS	\$ 7,814,000	\$ 7,814,000	
R/W Engineering/Acquisition (20%)	1	LS	\$ 64,000	\$ 64,000	
Subtotal "Soft Costs" (year 2026)				\$	21,950,000
Escalated Soft Costs (Year 2035)				\$	31,250,000
Grand Total (2026)				\$	74,400,000
Grand Total YOE (2035)				\$	105,900,000

1. Soft cost is percentage of Roadway Items (2026 dollars) except R/W Engineering which is 20% of R/W Items and then escalated to 2035.
 2. Costs are estimated in 2026 dollars and escalated assuming the earliest construction occurs is 2035.

PLANNING LEVEL COST ESTIMATE

3/25/2026

Coastal Rail Trail Segment 16

Roadway Items:	Quantity	Unit	Unit Cost	Item Total	Total
Mobilization	1	LS	\$ 5,045,000	\$ 5,045,000	
Traffic Control	1	LS	\$ 1,442,000	\$ 1,442,000	
Temporary Erosion Control	1	LS	\$ 541,000	\$ 541,000	
Preconstruction Survey	1	LS	\$ 541,000	\$ 541,000	
Quality Control	1	LS	\$ 433,000	\$ 433,000	
Unquantified Removals	1	LS	\$ 361,000	\$ 361,000	
Clearing and Grubbing	6	ACRE	\$ 10,200	\$ 63,000	
Track Guideway Excavation	76,106	CY	\$ 102	\$ 7,763,000	
Finish Subgrade	468,956	SF	\$ 1	\$ 610,000	
Track Shift Excavation	45,300	CY	\$ 102	\$ 4,621,000	
Track Guideway Embankment	10,077	CY	\$ 70	\$ 706,000	
Track Shift Embankment	2,352	CY	\$ 70	\$ 165,000	
Underdrain - Trail	9,379	LF	\$ 110	\$ 1,032,000	
Unquantified Drainage	1	LS	\$ 541,000	\$ 541,000	
Class 2 AB - Trail	3,474	CY	\$ 90	\$ 313,000	
HMA (Trail)	4,164	TON	\$ 220	\$ 917,000	
Pavement Markings - Roadway & Trail	9,379	LF	\$ 10	\$ 94,000	
Pavements Messages - Intersections	2	EA	\$ 10,200	\$ 21,000	
Signing - Unquantified	14,965	LS	\$ 2	\$ 30,000	
Fence - Trail	18,758	LF	\$ 40	\$ 751,000	
Unquantified Landscaping	6	ACRE	\$ 4,500	\$ 28,000	
Top Soil	8,339	CY	\$ 90	\$ 751,000	
Retaining Wall	5,600	SF	\$ 200	\$ 1,120,000	
Retaining Walls Track Shift	124,553	SF	\$ 210	\$ 26,157,000	
Ballast (to protect rail during wall install)	8,667	CY	\$ 130	\$ 1,127,000	
Existing Track/Guideway Demo	9,379	TF	\$ 389	\$ 3,649,000	
Track Shift	8,800	TF	\$ 186	\$ 1,637,000	
New Track	600	TF	\$ 279	\$ 168,000	
Unquantified Environmental Mitigation	334,834	DOL	\$ 1	\$ 335,000	
Unquantified Hazardous Materials	30,351	CY	\$ 382	\$ 11,595,000	
Contingency (40%)	1	LS	\$ 29,023,000	\$ 29,023,000	
Roadway Subtotal				\$	101,580,000
Right of Way Items:	Quantity	Unit	Unit Cost	Item Total	Total
Acquisition costs	-	SF	\$ -	\$ -	
TCE	5,000	SF	\$ 30	\$ 150,000	
Utility Relocation (Est)	-	LS	\$ -	\$ -	
ROW Contingency (40%)	1	LS	\$ 60,000	\$ 60,000	
Right of Way Subtotal				\$	210,000
Subtotal "Hard Costs" (year 2026)				\$	101,790,000
Cost Escalation (4% per year)			Subtotal "Hard Costs"	Escalation	Total
Future Costs (Year 2030)			\$ 101,790,000	\$ 17,290,000	\$ 119,100,000
Future Costs (Year 2035)			\$ 101,790,000	\$ 43,090,000	\$ 144,900,000
Future Costs (Year 2040)			\$ 101,790,000	\$ 74,480,000	\$ 176,300,000
Soft Costs ²	Quantity	Unit	Unit Cost	Item Total	Total
Preliminary Eng/Envir (15%)	1	LS	\$ 15,237,000	\$ 15,237,000	
Final Design (12%)	1	LS	\$ 12,190,000	\$ 12,190,000	
Construction Administration (15%)	1	LS	\$ 15,237,000	\$ 15,237,000	
R/W Engineering/Acquisition (20%)	1	LS	\$ 42,000	\$ 42,000	
Subtotal "Soft Costs" (year 2026)					\$ 42,710,000
Escalated Soft Costs (Year 2035)					\$ 60,790,000
Grand Total (2026)				\$	144,500,000
Grand Total YOY (2035)				\$	205,700,000

1. Soft cost is percentage of Roadway Items (2026 dollars) except R/W Engineering which is 20% of R/W Items and then escalated to 2035.
 2. Costs are estimated in 2026 dollars and escalated assuming the earliest construction occurs is 2035.

PLANNING LEVEL COST ESTIMATE

3/25/2026

Coastal Rail Trail Segment 17

Roadway Items:	Quantity	Unit	Unit Cost	Item Total	Total
Mobilization	1	LS	\$ 2,339,000	\$ 2,339,000	
Traffic Control	1	LS	\$ 669,000	\$ 669,000	
Temporary Erosion Control	1	LS	\$ 251,000	\$ 251,000	
Preconstruction Survey	1	LS	\$ 251,000	\$ 251,000	
Quality Control	1	LS	\$ 201,000	\$ 201,000	
Remove - Milling	61,487	SY	\$ 6	\$ 369,000	
Unquantified Removals	1	LS	\$ 168,000	\$ 168,000	
Clearing and Grubbing	6	ACRE	\$ 10,200	\$ 57,000	
Roadway/Trail Excavation	44,834	CY	\$ 40	\$ 1,794,000	
Finish Subgrade	508,922	SF	\$ 1	\$ 662,000	
Embankment for Bridge	4,000	CY	\$ 89	\$ 356,000	
Unquantified Drainage	1	LS	\$ 251,000	\$ 251,000	
Class 2 AB - Trail	6,732	CY	\$ 83	\$ 559,000	
Overlay	13,650	TON	\$ 163	\$ 2,225,000	
HMA (Trail)	8,065	TON	\$ 220	\$ 1,775,000	
Pavement Markings - Roadway & Trail	72,703	LF	\$ 8	\$ 582,000	
Pavements Messages - Intersections	2	EA	\$ 10,164	\$ 21,000	
Signing - Unquantified	29,000	LS	\$ 2	\$ 59,000	
CIP Concrete Barrier - 42 inch	17,293	LF	\$ 204	\$ 3,528,000	
Unquantified Landscaping	6	ACRE	\$ 4,500	\$ 26,000	
Top Soil	2,989	CY	\$ 83	\$ 249,000	
Harkin/Watsonville Slough Bridge	1,440	SF	\$ 600	\$ 864,000	
Retaining Wall	48,000	SF	\$ 191	\$ 9,168,000	
Hawk Signal	1	EA	\$ 102,000	\$ 102,000	
Contingency (40%)	1	LS	\$ 10,611,000	\$ 10,611,000	
Roadway Subtotal					\$ 37,140,000
Right of Way Items:	Quantity	Unit	Unit Cost	Item Total	Total
Acquisition costs	121,051	SF	\$ 30	\$ 3,632,000	
TCE	12,250	SF	\$ 30	\$ 368,000	
Utility Relocation (Est)	1	LS	\$ 7,114,000	\$ 7,114,000	
ROW Contingency (40%)	1	LS	\$ 4,446,000	\$ 4,446,000	
Right of Way Subtotal					\$ 15,560,000
Subtotal "Hard Costs" (year 2026)					\$ 52,700,000
Cost Escalation (4% per year)			Subtotal "Hard Costs"	Escalation	Total
Future Costs (Year 2030)			\$ 52,700,000	\$ 8,960,000	\$ 61,700,000
Future Costs (Year 2035)			\$ 52,700,000	\$ 22,310,000	\$ 75,100,000
Future Costs (Year 2040)			\$ 52,700,000	\$ 38,560,000	\$ 91,300,000
Soft Costs ²	Quantity	Unit	Unit Cost	Item Total	Total
Preliminary Eng/Envir (15%)	1	LS	\$ 5,571,000	\$ 5,571,000	
Final Design (12%)	1	LS	\$ 4,457,000	\$ 4,457,000	
Construction Administration (15%)	1	LS	\$ 5,571,000	\$ 5,571,000	
R/W Engineering/Acquisition (20%)	1	LS	\$ 3,112,000	\$ 3,112,000	
Subtotal "Soft Costs" (year 2026)					\$ 18,720,000
Escalated Soft Costs (Year 2035)					\$ 26,650,000
Grand Total (2026)					\$ 71,500,000
Grand Total YOE (2035)					\$ 101,800,000

1. Soft cost is percentage of Roadway Items (2026 dollars) except R/W Engineering which is 20% of R/W Items and then escalated to 2035.
 2. Costs are estimated in 2026 dollars and escalated assuming the earliest construction occurs is 2035.

PLANNING LEVEL COST ESTIMATE

3/27/2026

Coastal Rail Trail Segment 18 Alt 1
 Trail adjacent to Beach St. Drainage ditch filled in and replaced with concrete pipe

Roadway Items:	Quantity	Unit	Unit Cost	Item Total	Total
Mobilization	1	LS	\$ 2,135,000	\$ 2,135,000	
Traffic Control	1	LS	\$ 763,000	\$ 763,000	
Temporary Erosion Control	1	LS	\$ 229,000	\$ 229,000	
Preconstruction Survey	1	LS	\$ 229,000	\$ 229,000	
Quality Control	1	LS	\$ 183,000	\$ 183,000	
Remove - HMA Pavement	53,602	SY	\$ 17	\$ 912,000	
Remove - Milling	8,284	SY	\$ 6	\$ 50,000	
Unquantified Removals	1	LS	\$ 153,000	\$ 153,000	
Clearing and Grubbing	7	ACRE	\$ 10,200	\$ 71,000	
Roadway/Trail Excavation	47,301	CY	\$ 40	\$ 1,893,000	
Finish Subgrade	172,854	SF	\$ 1	\$ 225,000	
Unquantified Drainage	1	LS	\$ 229,000	\$ 229,000	
Culvert Pipe	7,400	LF	\$ 190	\$ 1,406,000	
Intersection Improvements/Widening	3	EA	\$ 102,000	\$ 306,000	
Class 2 AB - Trail	4,221	CY	\$ 83	\$ 351,000	
Class 2 AB - Road	43,109	CY	\$ 79	\$ 3,406,000	
HMA (Mainline)	53,187	TON	\$ 172	\$ 9,149,000	
Overlay	1,839	TON	\$ 170	\$ 313,000	
HMA (Trail)	5,060	TON	\$ 220	\$ 1,114,000	
Pavement Markings - Roadway & Trail	24,693	LF	\$ 8	\$ 198,000	
Pavements Messages - Intersections	7	EA	\$ 10,200	\$ 72,000	
Signing - Unquantified	0	LS	\$ 128,000	\$ 13,000	
CIP Concrete Barrier - 42 inch	6,715	LF	\$ 210	\$ 1,411,000	
Unquantified Landscaping	7	ACRE	\$ 4,500	\$ 32,000	
Top Soil	3,708	CY	\$ 83	\$ 308,000	
Relocate Existing Intersection Signals	2	EA	\$ 571,722	\$ 1,144,000	
Passive Warning Signal	1	EA	\$ 44,500	\$ 45,000	
Unquantified Environmental Mitigation	2,906,784	DOL	\$ 1	\$ 2,907,000	
Contingency (40%)	1	LS	\$ 11,699,000	\$ 11,699,000	
Roadway Subtotal				\$	40,950,000
Right of Way Items:	Quantity	Unit	Unit Cost	Item Total	Total
Acquisition costs	389,862	SF	\$ 30	\$ 11,696,000	
TCE	-	SF	\$ -	\$ -	
Utility Relocation (Est)	1	LS	\$ 3,100,000	\$ 3,100,000	
ROW Contingency (40%)	1	LS	\$ 5,919,000	\$ 5,919,000	
Right of Way Subtotal				\$	20,720,000
Subtotal "Hard Costs" (year 2026)				\$	61,670,000
Cost Escalation (4% per year)			Subtotal "Hard Costs"	Escalation	Total
Future Costs (Year 2030)			\$ 61,670,000	\$ 10,480,000	\$ 72,200,000
Future Costs (Year 2035)			\$ 61,670,000	\$ 26,110,000	\$ 87,800,000
Future Costs (Year 2040)			\$ 61,670,000	\$ 45,130,000	\$ 106,800,000
Soft Costs²	Quantity	Unit	Unit Cost	Item Total	Total
Preliminary Eng/Envir (15%)	1	LS	\$ 6,143,000	\$ 6,143,000	
Final Design (12%)	1	LS	\$ 4,914,000	\$ 4,914,000	
Construction Administration (15%)	1	LS	\$ 6,143,000	\$ 6,143,000	
R/W Engineering/Acquisition (20%)	1	LS	\$ 4,144,000	\$ 4,144,000	
Subtotal "Soft Costs" (year 2026)					\$ 21,350,000
Escalated Soft Costs (Year 2035)					\$ 30,390,000
Grand Total (2026)				\$	83,100,000
Grand Total YOY (2035)				\$	118,200,000

1. Soft cost is percentage of Roadway Items (2026 dollars) except R/W Engineering which is 20% of R/W Items and then escalated to 2035.

PLANNING LEVEL COST ESTIMATE

3/25/2026

<p>Coastal Rail Trail Segment 18 Alt 2 Trail south of open drainage ditch along frontage farm roads</p>

Roadway Items:	Quantity	Unit	Unit Cost	Item Total	Total
Mobilization	1	LS	\$ 287,000	\$ 287,000	
Traffic Control	1	LS	\$ 81,800	\$ 82,000	
Temporary Erosion Control	1	LS	\$ 30,700	\$ 31,000	
Preconstruction Survey	1	LS	\$ 30,700	\$ 31,000	
Quality Control	1	LS	\$ 24,600	\$ 25,000	
Unquantified Removals	1	LS	\$ 20,500	\$ 21,000	
Clearing and Grubbing	2	ACRE	\$ 10,200	\$ 16,000	
Roadway/Trail Excavation	6,243	CY	\$ 40	\$ 250,000	
Finish Subgrade	154,655	SF	\$ 1	\$ 202,000	
Unquantified Drainage	1	LS	\$ 30,700	\$ 31,000	
Intersection Improvements/Widening	3	EA	\$ 102,000	\$ 306,000	
Class 2 AB - Trail	4,221	CY	\$ 90	\$ 380,000	
HMA (Trail)	5,020	TON	\$ 220	\$ 1,105,000	
Pavement Markings - Roadway & Trail	12,888	LF	\$ 10	\$ 129,000	
Signing - Unquantified	20,563	LS	\$ 2	\$ 42,000	
Unquantified Landscaping	2	ACRE	\$ 4,500	\$ 7,000	
Top Soil	809	CY	\$ 90	\$ 73,000	
Relocate Existing Intersection Signals	2	EA	\$ 572,000	\$ 1,144,000	
Passive Warning Signal	1	EA	\$ 44,500	\$ 45,000	
Contingency (40%)	1	LS	\$ 1,683,000	\$ 1,683,000	
Roadway Subtotal					\$ 5,890,000
Right of Way Items:	Quantity	Unit	Unit Cost	Item Total	Total
Acquisition costs	544,517	SF	\$ 30	\$ 16,336,000	
TCE	3,000	SF	\$ 30	\$ 90,000	
Utility Relocation (Est)	-	LS	\$ -	\$ -	
ROW Contingency (40%)	1	LS	\$ 6,571,000	\$ 6,571,000	
Right of Way Subtotal					\$ 23,000,000
Subtotal "Hard Costs" (year 2026)					\$ 28,890,000
Cost Escalation (4% per year)			Subtotal "Hard Costs"	Escalation	Total
Future Costs (Year 2030)			\$ 28,890,000	\$ 4,910,000	\$ 33,800,000
Future Costs (Year 2035)			\$ 28,890,000	\$ 12,230,000	\$ 41,200,000
Future Costs (Year 2040)			\$ 28,890,000	\$ 21,140,000	\$ 50,100,000
Soft Costs ²	Quantity	Unit	Unit Cost	Item Total	Total
Preliminary Eng/Envir (15%)	1	LS	\$ 884,000	\$ 884,000	
Final Design (12%)	1	LS	\$ 707,000	\$ 707,000	
Construction Administration (15%)	1	LS	\$ 884,000	\$ 884,000	
R/W Engineering/Acquisition (20%)	1	LS	\$ 4,600,000	\$ 4,600,000	
Subtotal "Soft Costs" (year 2026)					\$ 7,080,000
Escalated Soft Costs (Year 2035)					\$ 10,080,000
Grand Total (2026)					\$ 36,000,000
Grand Total YOY (2035)					\$ 51,300,000

1. Soft cost is percentage of Roadway Items (2026 dollars) except R/W Engineering which is 20% of R/W Items and then escalated to 2035.
 2. Costs are estimated in 2026 dollars and escalated assuming the earliest construction occurs is 2035.

PLANNING LEVEL COST ESTIMATE

3/25/2026

Coastal Rail Trail Segment 19

Roadway Items:	Quantity	Unit	Unit Cost	Item Total	Total
Mobilization	1	LS	\$ 122,000	\$ 122,000	
Traffic Control	1	LS	\$ 34,600	\$ 35,000	
Temporary Erosion Control	1	LS	\$ 13,000	\$ 13,000	
Preconstruction Survey	1	LS	\$ 13,000	\$ 13,000	
Quality Control	1	LS	\$ 10,400	\$ 11,000	
Remove - Milling	16,763	SY	\$ 6	\$ 101,000	
Unquantified Removals	1	LS	\$ 8,700	\$ 9,000	
Unquantified Drainage	1	LS	\$ 13,000	\$ 13,000	
Intersection Improvements/Widening	1	EA	\$ 102,000	\$ 102,000	
Overlay	3,721	TON	\$ 170	\$ 633,000	
Pavement Markings - Roadway & Trail	17,803	LF	\$ 10	\$ 179,000	
Pavements Messages - Intersections	1	EA	\$ 10,200	\$ 11,000	
Signing - Unquantified	4,734	LS	\$ 10	\$ 48,000	
Relocate Existing Intersection Signals	1	EA	\$ 572,000	\$ 572,000	
Contingency (40%)	1	LS	\$ 745,000	\$ 745,000	
Roadway Subtotal					\$ 2,610,000
Right of Way Items:	Quantity	Unit	Unit Cost	Item Total	Total
Acquisition costs	-	SF	\$ -	\$ -	
TCE	-	SF	\$ -	\$ -	
Utility Relocation (Est)	-	LS	\$ -	\$ -	
ROW Contingency (40%)	-	LS	\$ -	\$ -	
Right of Way Subtotal					\$ -
Subtotal "Hard Costs" (year 2026)					\$ 2,610,000
Cost Escalation (4% per year)			Subtotal "Hard Costs"	Escalation	Total
Future Costs (Year 2030)			\$ 2,610,000	\$ 450,000	\$ 3,100,000
Future Costs (Year 2035)			\$ 2,610,000	\$ 1,110,000	\$ 3,800,000
Future Costs (Year 2040)			\$ 2,610,000	\$ 1,910,000	\$ 4,600,000
Soft Costs ²	Quantity	Unit	Unit Cost	Item Total	Total
Preliminary Eng/Envir (15%)	1	LS	\$ 392,000	\$ 392,000	
Final Design (12%)	1	LS	\$ 314,000	\$ 314,000	
Construction Administration (15%)	1	LS	\$ 392,000	\$ 392,000	
R/W Engineering/Acquisition (20%)	-	LS	\$ -	\$ -	
Subtotal "Soft Costs" (year 2026)					\$ 1,100,000
Escalated Soft Costs (Year 2035)					\$ 1,570,000
Grand Total (2026)					\$ 3,800,000
Grand Total YOE (2035)					\$ 5,400,000

1. Soft cost is percentage of Roadway Items (2026 dollars) except R/W Engineering which is 20% of R/W Items and then escalated to 2035.
 2. Costs are estimated in 2026 dollars and escalated assuming the earliest construction occurs is 2035.

PLANNING LEVEL COST ESTIMATE

Coastal Rail Trail Segment 20

3/25/2026

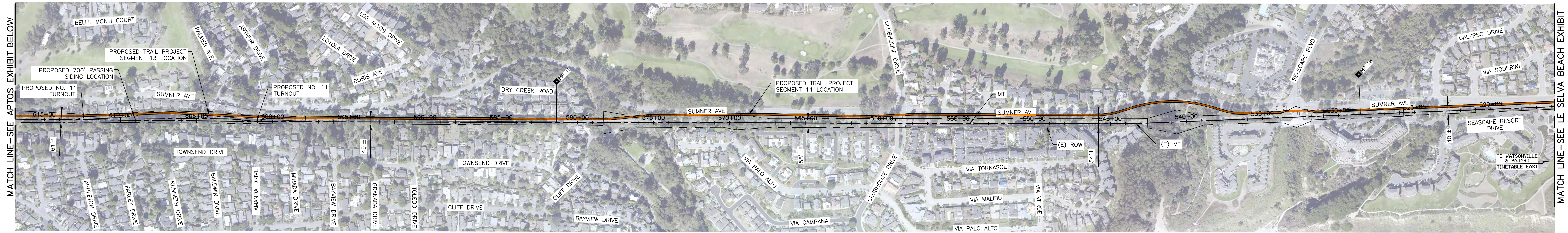
Roadway Items:	Quantity	Unit	Unit Cost	Item Total	Total
Mobilization	1	LS	\$ 1,097,000	\$ 1,097,000	
Traffic Control	1	LS	\$ 314,000	\$ 314,000	
Temporary Erosion Control	1	LS	\$ 118,000	\$ 118,000	
Preconstruction Survey	1	LS	\$ 118,000	\$ 118,000	
Quality Control	1	LS	\$ 94,000	\$ 94,000	
Remove - Milling	5,687	SY	\$ 10	\$ 57,000	
Unquantified Removals	1	LS	\$ 78,400	\$ 79,000	
Clearing and Grubbing	3	ACRE	\$ 10,200	\$ 29,000	
Track Guideway Excavation	28,434	CY	\$ 102	\$ 2,901,000	
Finish Subgrade	194,121	SF	\$ 1	\$ 253,000	
Embankment for Bridge	4,000	CY	\$ 90	\$ 360,000	
Track Guideway Embankment	5,188	CY	\$ 70	\$ 364,000	
Underdrain - Trail	684	LF	\$ 110	\$ 76,000	
Unquantified Drainage	1	LS	\$ 118,000	\$ 118,000	
Class 2 AB - Trail	253	CY	\$ 90	\$ 23,000	
Overlay	1,262	TON	\$ 170	\$ 215,000	
HMA (Trail)	304	TON	\$ 220	\$ 67,000	
Pavement Markings - Roadway & Trail	3,882	LF	\$ 10	\$ 39,000	
Pavements Messages - Intersections	1	EA	\$ 10,200	\$ 11,000	
Signing - Unquantified	6,195	LS	\$ 10	\$ 62,000	
Fence - Trail	1,367	LF	\$ 40	\$ 55,000	
Unquantified Landscaping	3	ACRE	\$ 4,500	\$ 13,000	
Pajaro River Bridge	6,000	SF	\$ 600	\$ 3,600,000	
Existing Track/Guidway Demo	3,199	TF	\$ 389	\$ 1,245,000	
Unquantified Environmental Mitigation	1,870,023	DOL	\$ 1	\$ 1,871,000	
Contingency (40%)	1	LS	\$ 5,272,000	\$ 5,272,000	
Roadway Subtotal					\$ 18,460,000
Right of Way Items:	Quantity	Unit	Unit Cost	Item Total	Total
Acquisition costs	-	SF	\$ -	\$ -	
TCE	3,000	SF	\$ 30	\$ 90,000	
Utility Relocation (Est)	-	LS	\$ -	\$ -	
ROW Contingency (40%)	1	LS	\$ 36,000	\$ 36,000	
Right of Way Subtotal					\$ 130,000
Subtotal "Hard Costs" (year 2026)					\$ 18,590,000
Cost Escalation (4% per year)			Subtotal "Hard Costs"	Escalation	Total
Future Costs (Year 2030)			\$ 18,590,000	\$ 3,160,000	\$ 21,800,000
Future Costs (Year 2035)			\$ 18,590,000	\$ 7,870,000	\$ 26,500,000
Future Costs (Year 2040)			\$ 18,590,000	\$ 13,610,000	\$ 32,200,000
Soft Costs ²	Quantity	Unit	Unit Cost	Item Total	Total
Preliminary Eng/Envir (15%)	1	LS	\$ 2,769,000	\$ 2,769,000	
Final Design (12%)	1	LS	\$ 2,216,000	\$ 2,216,000	
Construction Administration (15%)	1	LS	\$ 2,769,000	\$ 2,769,000	
R/W Engineering/Acquisition (20%)	1	LS	\$ 26,000	\$ 26,000	
Subtotal "Soft Costs" (year 2026)					\$ 7,780,000
Escalated Soft Costs (Year 2035)					\$ 11,080,000
Grand Total (2026)					\$ 26,400,000
Grand Total YOY (2035)					\$ 37,600,000

1. Soft cost is percentage of Roadway Items (2026 dollars) except R/W Engineering which is 20% of R/W Items and then escalated to 2035.

2. Costs are estimated in 2026 dollars and escalated assuming the earliest construction occurs is 2035.

B – Trail Exhibits

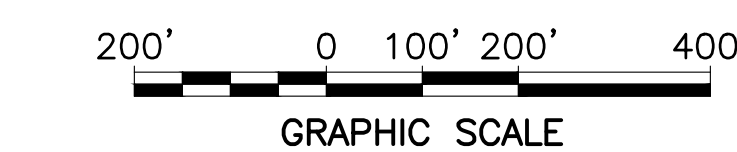
DRAFT



LEGEND

 TRAIL SEGMENT ALIGNMENT

CONCEPTUAL DRAFT - FOR DISCUSSION ONLY
OCTOBER 2025



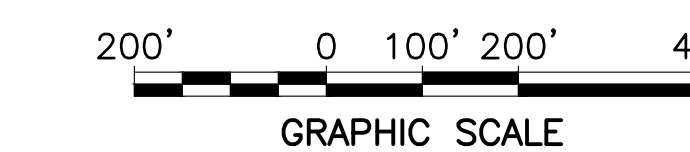
SANTA CRUZ COUNTY
 REGIONAL TRANSPORTATION COMMISSION
 SC RTC ELEC PASSENGER RAIL
 RIO DEL MAR
 PROPOSED ALIGNMENT



LEGEND

 TRAIL SEGMENT ALIGNMENT

**CONCEPTUAL DRAFT - FOR DISCUSSION ONLY
OCTOBER 2025**



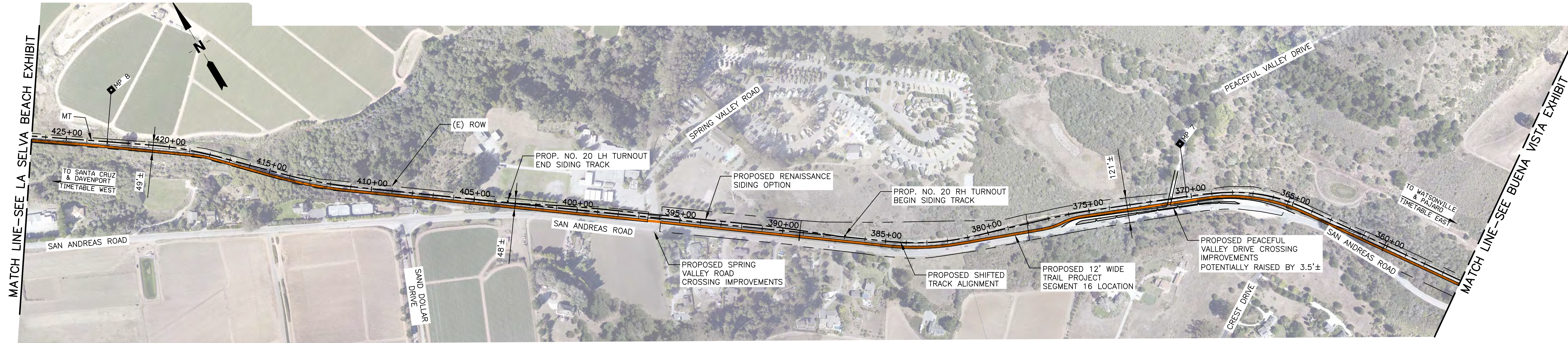
SANTA CRUZ COUNTY
REGIONAL TRANSPORTATION COMMISSION
SC RTC ELEC PASSENGER RAIL
LE SELVA BEACH
PROPOSED ALIGNMENT

T:\02 - Sep 29, 2025 - 12:27pm C:\working\west01\4489646\EXH-TRK-PROP-S3.dwg

CONTROL POINT

CITY:

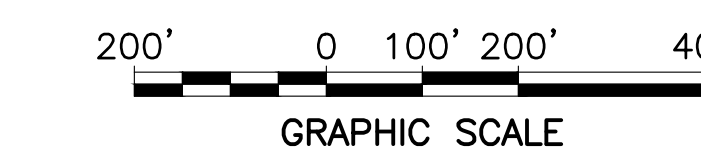
COUNTY:



LEGEND

 TRAIL SEGMENT ALIGNMENT

CONCEPTUAL DRAFT - FOR DISCUSSION ONLY OCTOBER 2025



SANTA CRUZ COUNTY
REGIONAL TRANSPORTATION COMMISSION
SC RTC ELEC PASSENGER RAIL

RENAISSANCE
PROPOSED ALIGNMENT
PROFILE OPTIONS

T:\02 - Sep 26, 2025 - 4:33pm C:\pwworking\west01\cd\489856\EXH-TRK-PROP-S3.dwg COUNTY: CITY: CONTROL POINT:

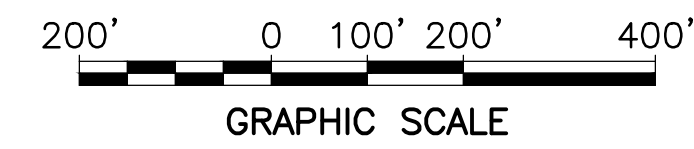
TL09Z Jun 19, 2025 11:35am C:\working\west01\3859210\EXH-TRK-PROP-5eg04-CRT_Beach Street Bike (South Side).dmg
COUNTY: CITY: CONTROL POINT:



LEGEND

TRAIL SEGMENT ALIGNMENT

CONCEPTUAL DRAFT - FOR DISCUSSION ONLY OCTOBER 2025



HDR
3003 Oak Road
Suite 500
Walnut Creek, CA 94597
925-465-2700



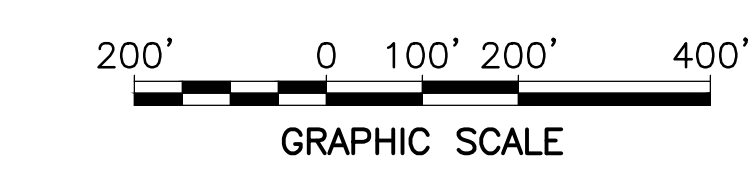
SANTA CRUZ COUNTY
REGIONAL TRANSPORTATION COMMISSION
SC RTC ELEC PASSENGER RAIL
SAN ANDREAS ROAD
PROPOSED BIKE PATH ALIGNMENT

CONCEPTUAL DRAFT - FOR DISCUSSION ONLY OCTOBER 2025



LEGEND

 TRAIL SEGMENT ALIGNMENT



HDR
3003 Oak Road
Suite 500
Walnut Creek, CA 94597
925-465-2700



SANTA CRUZ COUNTY
REGIONAL TRANSPORTATION COMMISSION
SC RTC ELEC PASSENGER RAIL
SAN ANDREAS RD TO BEACH ST
SOUTH SIDE OPTION
PROPOSED BIKE PATH ALIGNMENT

T:\02 - Jun 19, 2025 - 11:54am C:\working\west01\3859210\EXH-PROP-5eg04-CRT-Beach Street Bike Path Exhibits\3859210\EXH-PROP-5eg04-CRT-Beach Street Bike Path Exhibits.dwg
 COUNTY: CITY: CONTROL POINT:

TL09Z Jun 19, 2025 - 11:57am C:\working\west01\3859210\CHI-TRK-PROP-5eg04-CRT_Beach Street Bike (South Side).dgn

MATCH LINE-SEE SOUTH BIKE PATH EXHIBIT

MATCH LINE-SEE PAJARO BIKE PATH EXHIBIT

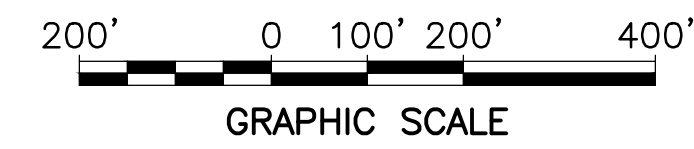


CONCEPTUAL DRAFT - FOR DISCUSSION ONLY

OCTOBER 2025

LEGEND

TRAIL SEGMENT ALIGNMENT



HDR
3003 Oak Road
Suite 500
Walnut Creek, CA 94597
925-465-2700



SANTA CRUZ COUNTY
REGIONAL TRANSPORTATION COMMISSION
SC RTC ELEC PASSENGER RAIL
WEST SIDE OF WATSONVILLE
SOUTH SIDE BEACH STREET OPTION
PROPOSED BIKE PATH ALIGNMENT

TO: Interagency Technical Advisory Committee (ITAC)
FROM: Brianna Goodman, Transportation Planner
RE: Rural Highways Safety Plan – Implementation and Monitoring

RECOMMENDATIONS

Staff recommends that the Interagency Technical Advisory Committee (ITAC) receive an update on the approved final Rural Highways Safety Plan (RHSP) and approve ITAC taking on the role of the implementation and monitoring body of the RHSP to fulfill the Safe Streets for All Safety Action Plan requirement.

BACKGROUND

The 2026 [Rural Highways Safety Plan](#) (RHSP) is an update and expansion of the Hwy 9/SLV Complete Streets Plan, and now provides a clear and actionable path toward eliminating crashes that result in people being killed or severely injured (KSIs) on all six undivided rural state highways in unincorporated Santa Cruz County – Highways 9, 35, 236, and Highways 1, 129, and 152 where undivided and outside of city limits. Grounded in the Safe System Approach and informed by data, technical analysis, and extensive community engagement, the RHSP shifts the focus from reacting to crashes after they occur to proactively reducing the conditions that make severe crashes more likely and more harmful.

Across the six study highways, the Plan identifies recurring potential risk factors and crash patterns that affect people driving, walking, biking, and accessing transit. These risks are shaped by roadway context, speed, access patterns, and the presence of people walking and biking, particularly near town centers, schools, transit stops, and key destinations. By combining systemic risk analysis with community input, the RHSP highlights where safety challenges are most concentrated and where investments can have the greatest impact.

The RHSP also establishes a practical framework for moving from planning to action. The countermeasure toolbox, Safe System strategies, and emphasis area safety enhancement concepts are designed to support near-term improvements as well as longer-term capital investments. Recommendations emphasize making safety the default in planning, design, operations, and funding decisions. This approach recognizes that people make mistakes and that the transportation system should be designed to reduce the likelihood that those mistakes result in severe injury or death.

Implementation will require sustained coordination among the RTC, Caltrans, the County, local jurisdictions, and community partners. While Caltrans retains authority over state highways, the RTC plays a critical role in regional coordination,

funding strategy, and advancing projects that align with adopted regional safety priorities. The RHSP is intentionally structured to support this collaboration and to guide how projects are identified, prioritized, and advanced over time.

DISCUSSION

In order to meet the Safety Action Plan requirements of the Safe Streets for All federal grant program (as well as the Local Roadway Safety Plan requirement it replaces), a Plan must:

- Have a committee, task force, or similar body charged with oversight of the Action Plan development, implementation, and monitoring.
- Identify progress and transparency methods that measure progress over time, including outcome data (**Attachment 1**).

As the ITAC reviewed and provided feedback on the RHSP at all project Milestones, and includes representatives from key local partners at Santa Cruz County, Caltrans, and METRO, ITAC is best suited to serve as the committee for RHSP implementation and monitoring. Oversight responsibilities include receiving annual reports on RTC progress toward implementing safety enhancement projects identified in the RHSP, and progress toward Vision Zero on Santa Cruz County Rural Highways. ITAC would review and approve RTC staff recommendations on project implementation priorities and pathways, including seeking grants, but all expenditures of Measure D funds will still require RTC approval.

As the UC Berkeley Transportation Injury Mapping System (TIMS) adds new crash data on an annual basis, RTC staff propose coming before ITAC annually, with additional agenda items as needed. RHSP work groups, composed of representatives from community-based organizations on the rural highways, some ITAC members, and other public agencies such as the Santa Cruz County Health Services Agency may be convened as necessary on identified projects. SLV Program staff, charged with implementation of the SLV Plan utilizing the Highway 9 Measure D set-aside, are submitting the Boulder Creek Complete Streets Improvements project to the Safe Streets For All Implementation Grant category this May.

SUMMARY

The [Rural Highways Safety Plan](#) (RHSP) seeks to substantially enhance safety for all modes of transportation on the six undivided rural highways in Santa Cruz County by identifying high-risk areas, analyzing crash patterns, and recommending targeted safety countermeasures. To ensure the RHSP is confirmed as a compliant Safe Streets for All Action Plan, ITAC will serve as the committee charged with implementing and monitoring progress of the RHSP, including progress towards Vision Zero. This will allow RHSP-identified projects to compete for HSIP and SS4A funding.

ATTACHMENTS:

1. Excerpt from the Rural Highways Safety Plan, 8.3 Evaluation Strategies

8.3 Evaluation Strategies

By tracking advancement toward the goal of zero and determining the effectiveness of implemented strategies, we can adjust strategies as needed to maintain progress. RTC is committed to regular reporting on progress and has established a process for evaluation and monitoring. The Vision Zero Task Force will be responsible for monitoring and tracking progress and will work with RTC to gather information related to the measures of effectiveness and to collaboratively develop strategies to meet targets.

Topic	Measure of Effectiveness	Target	Reporting Frequency
<i>Goal 1: Commit to Vision Zero</i>			
Vision Zero	Report KSI crashes by mode on study highways	Zero KSIs by 2050	5 years
Safe Speeds	Compare observed vehicle speeds to target speeds on study highways	Observed speeds are consistent with target vehicle speeds	5 years
<i>Goal 2: Advance Partnerships and Collaboration</i>			
Emphasis Area Safety Enhancement Implementation	Track implementation of emphasis area safety enhancement implementation and report project progress	Implement quick-build improvements in short-term and construct permanent improvements as illustrated in concept plans in the medium- or long-term	2 years
Safety Culture	Report percentage of projects incorporating Safe System principles	All transportation projects incorporate Safe System principles	2 years
Vision Zero Task Force	Establish Vision Zero taskforce and track meeting frequency and attendance	Includes a diverse group of stakeholders and meets regularly to track RHSP progress	At least once a quarter
<i>Goal 3: Prioritize Equity and Community Engagement</i>			
KSIs in Equity Areas	Report KSI crashes in equity areas on study highways	Zero KSIs by 2050	5 years
Alignment with future RTC Equity Plans	Regularly evaluate RHSP project list and priorities to ensure alignment with latest equity assessments and planning	Projects reflect latest RTC equity priorities	2 years
<i>Goal 4: Future Funding Success</i>			
SS4A Eligibility	Coordinate with the county SS4A Plan. Adopt SS4A compliant RHSP.	Santa Cruz County is eligible for SS4A Demonstration and Implementation funding.	Within first 1 year
Measure D Funding	Review project list to identify opportunities to use Measure D funding.	RTC helps to get projects funded.	2 years
RTC Funding Support	Track potential funding sources. Record number of projects where RTC worked with county and Caltrans to support agencies in seeking funding including applying for funding as joint partnerships or offering resources and letters of support	Priority projects are funded	Every year
RTC Funding Support	Track potential funding sources. Record number of projects where RTC worked with county and Caltrans to support agencies in seeking funding including applying for funding as joint partnerships or offering resources and letters of support	Priority projects are funded	Every year

AGENDA: April 16, 2026

TO: Interagency Technical Advisory Committee (ITAC)
FROM: Marshall Ballard, Transportation Planner
RE: Santa Cruz County Regional Transportation Commission
Transportation Data Science Survey Results

RECOMMENDATION

Staff recommend that the Interagency Technical Advisory Committee (ITAC) receive an informational update from the results of the transportation data needs survey and potential next steps with the members of the ad hoc data group.

BACKGROUND

As discussed during the March ITAC meeting, the RTC will lead a data program to enhance regional transportation data needs. The motion to create an ad hoc data working group was unanimously approved.

DISCUSSION

The RTC requested members complete a transportation data needs survey to inform the ad hoc data working group of next steps. Here are the results of the survey. Survey responses demonstrated alignment around the need for comprehensive, standardized, and accessible transportation data particularly multimodal, safety, and regional trend data. Additionally, there is willingness to share data and collaborate, including needs for centralized tools and improved data collection or acquisition practices.

1. Current Data Collection Practices

Respondents primarily collect:

- Traffic data: ADT, AADT, corridor volumes, turning movement counts, speed surveys
- Safety data: collision data (e.g., SWITRS), limited safety analytics

- Transit data: ridership, on-time performance, run times, customer surveys
- Land use & demographics: parcel-level land use, census and environmental data
- Limited multimodal data: bicycle and pedestrian counts (inconsistent and often project-specific)
- Qualitative data: community surveys, safety audits, perceived safety (e.g., Love to Ride app)

Key Gap:

Consistent, systemwide bike and pedestrian data collection is lacking.

2. Data Sharing

- Strong willingness to share data across agencies
- Commonly shareable datasets include:
 - Traffic counts (ADT, turning movements, speed)
 - Multimodal counts (where available)
 - Public datasets and reports

Common Constraints:

- Protection of personally identifiable information
- Proprietary or consultant-owned data
- Sensitive safety-related or location-specific data
- Data tied to active or ongoing projects

3. Interest in Data Vendors & Tools

Respondents expressed strong interest in:

- Traffic and multimodal data (vehicle, bike, pedestrian counts)
- Travel behavior insights (origin-destination, travel diaries, tourism patterns)
- Safety analytics (collisions, near-miss/conflict data)
- Freight/truck data
- Transit technologies (e.g., Transit Signal Priority)

Desired Capabilities:

- Cloud-based platforms with dashboards and visualization tools
- Easy reporting and seasonal trend analysis

- Integration with GIS and signal systems
- Access to both raw and processed data

4. ADT / AADT Priorities

There is strong consensus that ADT/AADT data is critical.

Priority Locations:

- High-volume corridors and regional connectors (e.g., highways and arterials)
- Corridors under consideration for Complete Streets treatments
- Locations near thresholds for lane reduction feasibility
- Seasonal and gateway routes with fluctuating demand

Use Cases:

- Inform Complete Streets feasibility
- Support safety and multimodal planning
- Track regional and seasonal trends

5. Turning Movement Data

Broad agreement that turning movement data is important.

Priority Locations:

- Signalized intersections
- High-injury corridors
- Highway on/off ramps
- Arterial and collector intersections
- Locations tied to planned project design or safety improvements

Key Insight:

Proactively collecting this data can reduce future consultant costs and improve project readiness.

6. Signalized Intersection Data Needs

Respondents emphasized the need for more robust data at signalized intersections, including:

- Turning movements
- Delay and queue lengths

- Signal timing and performance metrics
- Collision and conflict data
- Multimodal volumes and user behavior

Priority Focus:

- High-collision locations
- High-delay corridors
- Intersections undergoing or planned for redesign

7. Multimodal Data Collection

There is strong support for expanded multimodal data collection.

Priority Locations:

- Trail networks (e.g., rail trail access points)
- Bike corridors and active transportation projects
- High-stress or high-demand bike routes
- Connections to schools, parks, and commercial areas
- Areas with existing or planned bicycle infrastructure

Key Need:

Baseline and before/after data to support grant applications and project evaluation.

8. Origin–Destination (O/D) Data

- Limited prior collection, but strong interest in access
- High demand for tools to visualize and interpret O/D data

Applications:

- Understanding travel patterns
- Supporting regional and corridor-level planning
- Informing Complete Streets and mode shift strategies

9. Truck / Freight Data

Concerns are concentrated in:

- Downtown and commercial corridors (e.g., Watsonville)
- Areas where trucks interact with bike and pedestrian facilities
- Corridors with regional through-traffic and diversion from highways

Use Cases:

- Route optimization and potential re-routing
- Safety improvements
- Pavement management and infrastructure design

10. Speeding and Unsafe Driving Data

Strong interest in access to speed and unsafe driving data.

Key Themes:

- Desire to lower speed limits, particularly on local and multimodal corridors
- Need for better speed data collection, especially on local streets
- Importance of supporting Vision Zero goals

Challenge:

Existing speed studies are time-consuming and resource-intensive.

11. Safety & Near-Miss Data

- High interest in near-miss data, though availability is currently limited

Current State:

- Reliance on reported collision data
- Near-miss data is largely anecdotal or unavailable

Opportunity:

- Near-miss and conflict data seen as valuable for proactive safety planning

12. Regional Bike Map Enhancements

Strong support for an updated regional bike map.

Suggested Additions:

- Bike facility classifications (Class I–IV)
- Bike parking locations
- Trail and network connections
- Destinations and key land uses
- Safety features and stress-level indicators

- Potential inclusion of pedestrian infrastructure

13. Data Access & Tools

There is unanimous interest in:

- Access to historical data (past decade)
- Ability to visualize and download datasets

14. Modeling & Travel Behavior Data

- Moderate familiarity with travel demand models, but interest in learning more
- Strong interest in:
 - Activity-based models (AMBAG)
 - Household travel surveys

15. Key Cross-Cutting Needs

Respondents consistently highlighted the need for:

- A centralized, countywide data repository
- Standardized data formats and sharing protocols
- More frequent and automated data collection, especially multimodal
- Integration of transportation, land use, and safety data
- Tools for rapid analysis to support:
 - Grant applications
 - Project prioritization
 - Policy and planning decisions

NEXT STEPS

RTC staff will coordinate near term meetings with the ad hoc group members and facilitate demonstrations with data providers and data analytics platform service providers.

SUMMARY

RTC staff will provide updates to the program and return to the committee with recommendations on data / data platform procurement options.